

STAR TREK™

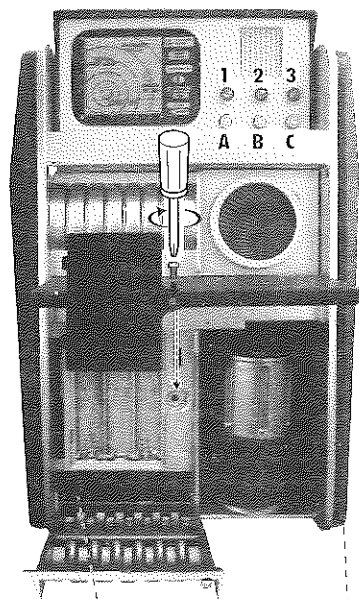
Suggested age 8 and up

CLASSIC SCIENCE TRICORDER

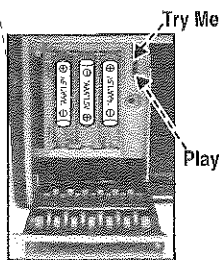
Includes Authentic Phrases and SFX from
the original STAR TREK series

featuring the voice of Leonard Nimoy as Mr. Spock

Science Tricorder

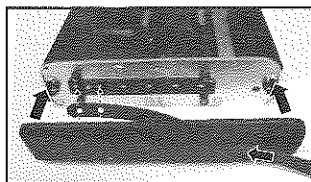


For Normal operation please unscrew battery compartment door to reveal 3 way switch labeled "Try-Me/Off/Play". Push switch to left most position to the "Play" position.



BATTERY PLACEMENT

Batteries must be replaced by an adult. Replace batteries when sounds become weak or distort or when the light is dim. Use screwdriver (not included) to open battery compartment and insert 3 new batteries as shown.



STRAP LENGTH ADJUSTMENT

To adjust strap length pop off side housing as shown on either side of the tricorder and manually adjust the strap level accordingly.

Caution:

1. Rechargeable batteries are only to be charged under adult supervision.
2. Use only fresh batteries of the required size and recommended type.
3. Do not dispose of the batteries into the fire, they may explode.
4. Dispose of batteries safely
5. Do not mix alkaline, standard (carbon-zinc), or rechargeable (nickel-cadmium) batteries.
6. Difference types of batteries or new and used batteries are not to be mixed.
7. Batteries should be replaced by adults.
8. Batteries are to be inserted with the correct polarity.
9. Exhausted batteries are to be removed from the toy.
10. The supply terminals are not to be short-circuited.
11. Remove batteries if the toy is not going to be played for some time.
12. The packaging should be kept since it contains important information.
13. Non-rechargeable batteries are not to be recharged.
14. Rechargeable batteries are to be removed from the toy before being charged.

When Tricorder is flipped open :

1. "SFX-Tricorder" sound plays once.
2. Screen immediately turns on. Will remain on for 3 minutes then shuts off (Sleep Mode) unless a button is pressed or hood is flipped down then up again.
3. Both Blue LEDs remain steady ON, Amber LED turns ON and OFF. 2 secs on 1 sec off.
4. Moire (motor like communicator) is NOT Spinning.

When Tricorder is closed :

1. "Tricorder Click" sound plays once.
2. ALL lights stop function.

Button A: Tricorder Hail Function

When button A is pressed, the "Tricorder Hail function" is activated and the following occurs:

1. All 3 LEDs Blink left to right then repeats until Tricorder hood is closed.
2. When hood is closed 1 of 2 different hailing sequences will occur.

a-Scenario 1

5 seconds after tricorder is closed:

1. SFX- Science Tricorder Beeps" activates then is silent for 2 secs then cycle repeats until hood is opened.
2. When hood is opened "SFX- Tricorder Click" sounds then the following phrase activates "Captain Tricorder picking up very faint life readings approximately 700 meters away from here"
3. During phrase playback Number 1 Blue LED, above Button A, will blink according to sound of voice and then remain on. Amber light will go ON and OFF as mentioned above. Number 2 Blue LED will remain on.
4. If any button is pressed during Playback it cancels the function.
5. Tricorder function returns to normal, and LEDs continue with lighting sequence shown above in section I.

b- Scenario 2

5 seconds after Tricorder is closed:

1. SFX- Tricorder Short Circuit" activates in the following manner "SFX- Tricorder Short Circuit" plays for .45 secs then starts over and plays entire file. There is then a 2 second pause and "SFX- Tricorder Short Circuit" plays entire file, after 2 seconds cycle repeats again until the Hood is opened:
2. When hood is opened "SFX- Tricorder Short Circuit" plays once followed by another phrase "Spock- They've Locked onto my tricorder", after a 1 sec pause the last phrase activates "Spock- Very Ingenious".
3. During phrase playback Number 1 Blue LED, above Button A will blink according to sound of voice and then remain on. Amber light will go ON and OFF as mentioned above. Number 2 Blue LED will remain on.
4. If any button is pressed during Playback it cancels the function.
5. Tricorder function returns to normal, and LEDs continue with lighting sequence shown above in section I.

Button B: Science Tricorder Scan

When Button B is Pressed:

1. "SFX- Science Tricorder Scan" sound activates and loops until Button B is pressed again. Pressing Button A or C during Scan will have NO affect.
2. Moire spins until Button B is pressed again.
3. LEDs Blink in following sequence. Amber LED ON Both Blue LEDs OFF for 1 Sec. Then Both Blue LEDs ON for 1 Sec, Amber LED OFF for 1 Sec. LEDs will continue blinking this way until Button B is pressed again..

Button C: Science Tricorder Phrases

When Button C is pressed, one of the Following Spock Phrase will Playback in the following order.

1. "Spock- Captain Imulses that direction very weak"
2. "Spock- Getting Another reading Captain"
3. "Spock- An Alien metal of some kind an alloy resistant to probe"
4. "Spock- There seems to be some disturbance coming from that cave"
5. "Spock- Strange readings indicate a life form, possibly human"
6. "Spock- Impossible to Calculate, we lack data to analyze"

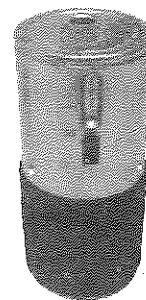
Batteries Installation

Batteries must be replaced by an adult. Replace batteries when sounds become weak or distort or when the light is dim. The Science Tricorder requires 3 x AAA LR03 1.5V batteries. Installed the batteries as below.

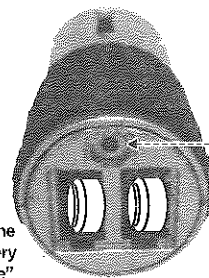
1. Open the battery compartment cover and you can see the battery compartment inside the big door.
2. Using a Phillips screwdriver (not included) to remove the screw on the battery compartment door.
3. Insert the batteries according to the diagram. Ensure that the positive and negative polarities match the illustrations inside the battery compartment.
4. Replace the battery compartment door with the screw using a screwdriver. Do not over tighten. And replace the battery compartment cover.

During phrase playback Number 2 Blue LED, above Button C will blink according to sound of voice and then remain on. Amber light will go ON and OFF as mentioned above. Number 1 Blue LED above Button A will remain on.

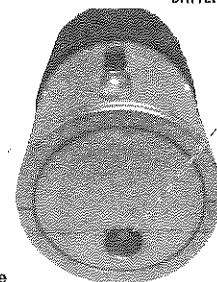
Science Scanner



Slide Switch Activating Tri-Colored LED.



2 X 1.5V (LR44) BATTERIES



LED Will Blink every sec and will show a different color.



WARNING: CHOKING HAZARD
Small Parts. Not for Children under 3 years.



Electrostatic discharge may interfere with the module. If it occurs, please re-install the batteries.

Diamond Select Toys and Collectibles is a trademark of Diamond Select Toys and Collectibles, LLC. © 2012 Diamond Select Toys and Collectibles. All Rights Reserved. TM & © 2012 CBS Studios Inc. © 2012 Paramount Pictures Corp.

Printed in China.