

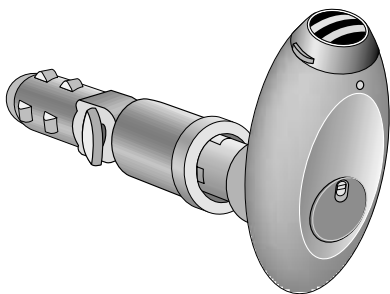
THE SHARPER IMAGE®

Ionic Breeze® Dashboard Ionizer

SI629 Instructions

SHARPER IMAGE DESIGN™

Read and save these instructions.



Dear Sharper Image Customer,

Thank you for your purchase of a Sharper Image product. We appreciate your business very much.

This item was created by Sharper Image Design, our company's own product development group. Please accept my personal assurance of your complete satisfaction with this product's quality and performance. We offer generous return privileges and excellent warranties on all our products.

For more than 25 years, The Sharper Image has shared the fun of discovering innovative products that make life better and more enjoyable. We've been in business a long time because we are an exciting place to shop and — just as importantly — we strive to deliver great customer service that exceeds your expectations.

Enjoy your purchase!

Respectfully,

A handwritten signature in black ink that reads "Richard". The script is fluid and cursive, with a large, stylized "R" and a small dot above the "i".

Richard Thalheimer

Founder, Chairman and Chief Executive Officer

*Call 1-800-344-4444 for 24-7 ordering and customer service,
or go to **www.sharperimage.com**, our complete online store.*

Table of Contents

Setup and Operation.....	4
Pass-Through Jack.....	5
Cleaning the Collection Tube	6
Statement of FCC/DHHS Compliance	8
FCC Label Compliance Statement	9
CE.....	9
One-Year Warranty.....	10

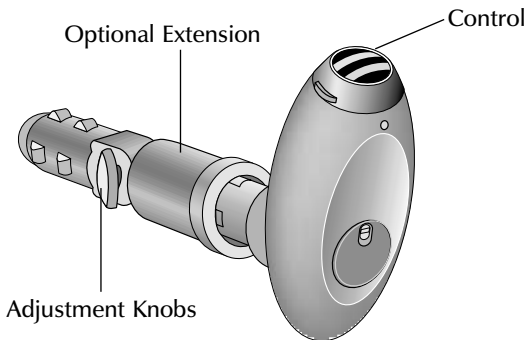
Setup and Operation

Insert the Ionic Breeze® Dashboard Ionizer into the vehicle's socket. If required, use the adapter extension.

The Ionic Breeze® may be placed at any angle that works best for your vehicle. It will be equally effective horizontally, vertically or upside down.

Turn the adjustment knobs to loosen and change the angle of the plug and plug extension.

Turn the **CONTROL** to the **ON** position. (Usually your ignition key must also be turned to the ON position.)



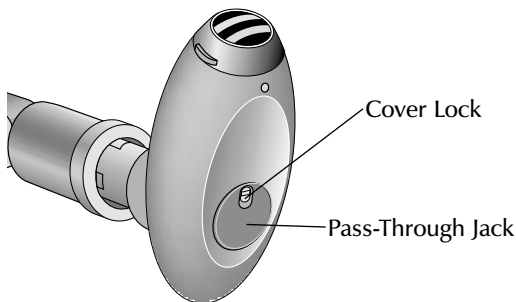
Pass-Through Jack

The Ionic Breeze® Dashboard Ionizer features a PASS-THROUGH jack that will allow you to power another 12V DC product (max. 5A) that has been designed for car use.

To unlock, slide the jack cover lock downward. The cover can now be pulled open.

When the jack is not in use, replace and lock the cover.

WARNING: DO NOT use the PASS-THROUGH jack to power a car cigarette lighter. The heat produced by a cigarette lighter could cause damage and/or injury.



Cleaning the Collection Tube

Cleaning of the tube is required after every 100 hours of use.

Before cleaning, unplug the unit.

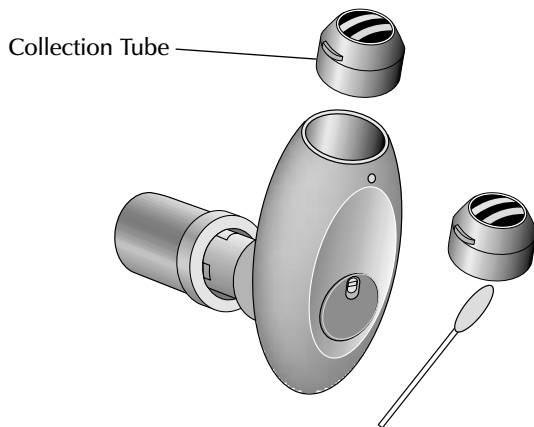
Remove the **COLLECTION TUBE** by turning the **CONTROL** to the **CLEAN** position and lifting it from the unit.

To wipe away debris from inside and around the collection tube, use a dry or slightly damp cotton swab.

Replace the tube and turn the **CONTROL** to either the **OFF** or **ON** position.

The exterior of the unit can be safely cleaned using a soft cloth or sponge and a solution of one part household bleach to five parts water.

Cleaning the Collection Tube



Statement of FCC/DHHS Compliance

WARNING: Changes or modifications to this unit not expressly approved by the party responsible for compliance could void the user's authority to operate the equipment.

NOTE: This product complies with DHHS Rule 21 subchapter J at date of manufacture.

This equipment has been tested and found to comply with the limits for a Class B digital device, pursuant to Part 15 of the FCC Rules. These limits are designed to provide reasonable protection against harmful interference in a residential installation. This equipment generates, uses, and can radiate radio frequency energy and, if not installed and used in accordance with the instructions, may cause harmful interference to radio communications. However, there is no guarantee that interference will not occur in a particular installation.

If this equipment does cause harmful interference to radio or television reception, which can be determined by turning the equipment off and on, the user is encouraged to try to correct the interference by one or more of the following measures:

- Reorient or relocate the receiving antenna.
- Increase the separation between the equipment and receiver.

Statement of FCC/DHHS Compliance

- Connect the equipment into an outlet on a circuit different from that to which the receiver is connected.
- Consult the dealer or an experienced radio/TV technician for assistance.

FCC Label Compliance Statement

This device complies with Part 15 of the FCC Rules. Operation is subject to the following two conditions: (1) This device may not cause harmful interference, and (2) this device must accept any interference received, including interference that may cause undesired operation.

CE The product herewith complies with the requirements of the EMC Directive 89/336/EEC and carries the “CE” mark accordingly.

One-Year Warranty

What Is Covered

This warranty covers any defects in materials or workmanship, with the exceptions stated below.

How Long Coverage Lasts

This warranty runs for one year from the date of original purchase.

What Is Not Covered

This warranty does not cover damage caused by misuse or use other than as intended and described in the product instruction manual, or loss or damage to batteries or removable parts.

What The Sharper Image Will Do

The Sharper Image will repair any defects in materials or workmanship. In the event repair is not possible, The Sharper Image will either replace this product with one of similar features and price, or refund the full purchase price of the product, whichever you prefer.

How to Obtain Service

Return the product and receipt, along with a brief explanation of the problem, to:

T.S.I. - Returns Department
2901-A West 60th Street
Little Rock, AR 72209

If you have questions please feel free to contact our customer service representatives at 1-800-344-5555 or by email at care@sharperimage.com.

This warranty gives you specific legal rights, and you may have other legal rights that vary from state to state.

Copyright 2003

Sharper Image Corporation
650 Davis St., San Francisco, CA 94111
(415) 445-6000

Shop online: **www.sharperimage.com**

Due to continuing improvements, actual product may differ slightly from the product described herein.
V2 11/03