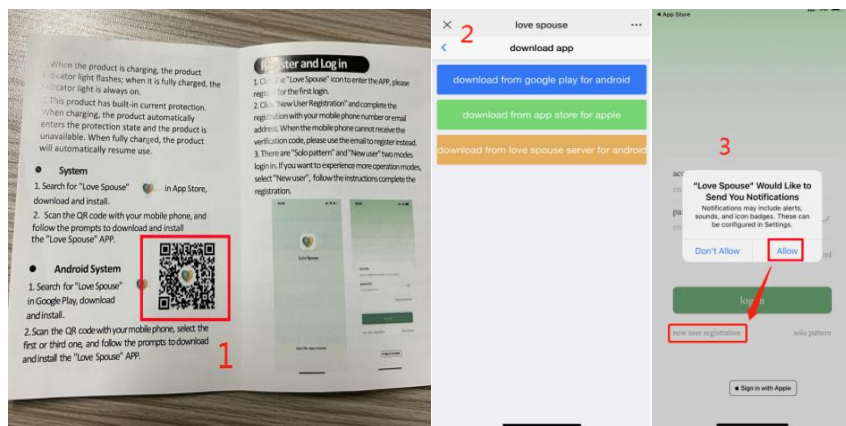
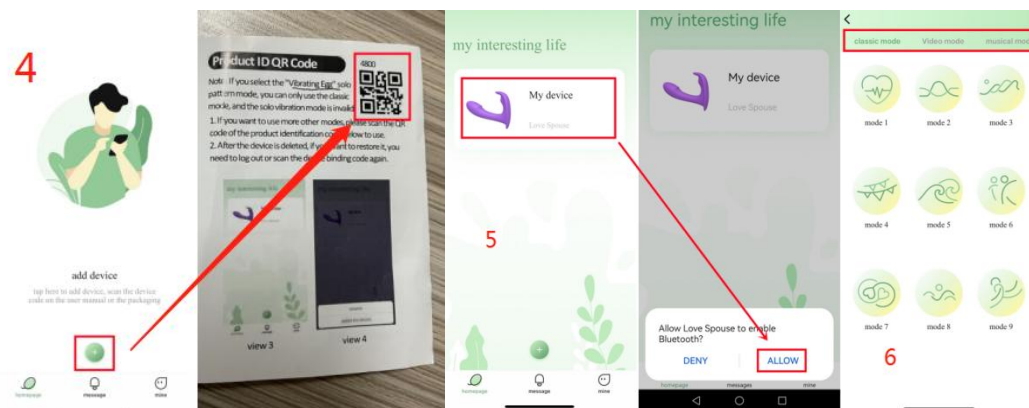


User manual

- ① Scan the **QR code** on the manual or details page
- ② Select the appropriate download method to install
- ③ Open "Love Spouse" and select **"new user registration"**



- ④ Click **"+"** on the home page, scan the **QR code of the device** or enter the device code **"4800"** to add toys.
- ⑤ Click on the device to allow **bluetooth** access
- ⑥ Choose your preferred mode to control your toy



How to add friend?

- ① Your friend needs to download **"Love Spouse"**, then **sign up** and find the **ID number**
- ② Select **"interactive mode"**, click **"+"** to enter the friend's **ID number**, and click **"add"**
- ③ Make a video or voice call after your friend agrees to your application information

