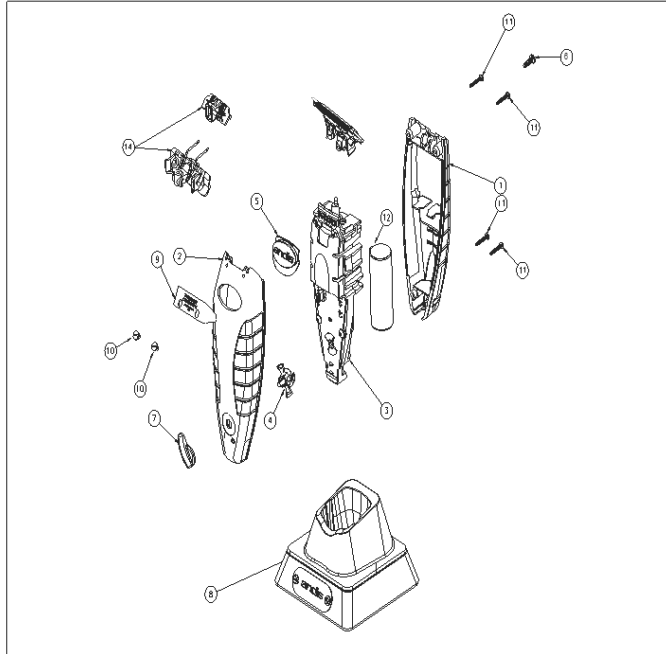




SERVICE PARTS LIST  
 MODEL ORL CLIPPER  
 DOMESTIC



ITEM NO.	PART NO.	DESCRIPTION	QTY. REQ'D
1	201758	Lower Housing	1
2	201207	Upper Housing	1
3	74004	Outliner Rechargeable Sled Assembly	1
4	74023	Switch Actuator Assy.	1
5	74054	Outliner Rechargeable Lens	1
6	29271	Blade Retaining Screw	1
7	200934	Switch Button- Black	1
8	74067	Stand	1
9	74031	Outliner Hair Guard	1
10	04025	Hair Guard Screw	2
11	201139	Housing screw	4
12	74029	Battery/Wires	1

ITEM NO.	PART NO.	DESCRIPTION	QTY. REQ'D
13	74034	Adaptor	1
14	20657	Replacement Drive/Yoke	1

When ordering repair parts, include part number, part name and model of trimmer. For best performance, trimmer blades should be CLEANED and OILED with Andis Clipper Oil before and after use. If repair is necessary, return to any Andis Authorized Repair Service Station, or to Andis Company, 1800 Renaissance Blvd., Sturtevant, Wisconsin, 53177 U.S.A.. Pack carefully, mail either Insured Parcel Post, or U.P.S. , attach a letter to outside of package explaining difficulty.

Rev-B 06/12/19