

## SPECIFICATIONS

<b>Material</b>	Bare Copper	
	Tin-plated Copper	
<b>Wire Gauge</b>	6 AWG	1/0
	4 AWG	2/0
	2 AWG	3/0
	1 AWG	4/0
<b>Hole Sizes</b>	<i>Nominal</i>	<i>Actual Sizes</i>
	5/16"	0.33
	3/8"	0.41
	1/2"	0.52
	1/4"	0.27



## FEATURES

**Lifetime warranty.** Don't choose a product that will degrade or fail prematurely.

**Precision fit.** High tolerance dies are used in the molding process.

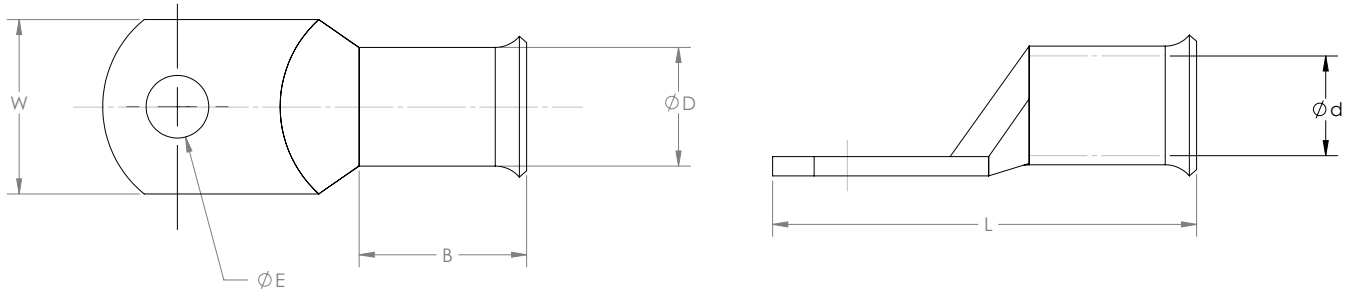
**Flared opening for easy wire insertion.**

**HIGH Temp Resistance.** Won't degrade in high temperature conditions.

**High Electrolytic Grade Copper Terminals** outlast and outperform brass and aluminum models.

**Closed end construction.** When used with adhesive-lined shrink sleeve, prevents corrosion of conductor by sealing out moisture.

## DIMENSIONS (in.)



Gauge	ØE (Hole Sizes)	ØE	ØD	Ød	W	B	L
6 AWG	1/4", 5/16", 3/8"	0.27, 0.33, 0.41	0.32	0.23	0.54	0.59	1.47
	1/2"	0.52	0.32	0.23	0.67	0.55	1.47
4 AWG	1/4", 5/16"	0.27, 0.33	0.37	0.29	0.54	0.61	1.53
	3/8"	0.41	0.37	0.29	0.57	0.61	1.53
	1/2"	0.52	0.37	0.29	0.67	0.59	1.53
2 AWG	1/4", 5/16", 3/8"	0.27, 0.33, 0.41	0.44	0.33	0.65	0.63	1.62
	1/2"	0.52	0.44	0.33	0.67	0.6	1.62
1 AWG	1/4", 5/16"	0.27, 0.33	0.46	0.36	0.65	0.63	1.72
	3/8"	0.41	0.46	0.36	0.67	0.63	1.72
	1/2"	0.52	0.46	0.36	0.75	0.63	1.72
1/0	1/4", 5/16", 3/8"	0.27, 0.33, 0.41	0.51	0.41	0.72	0.75	1.84
	1/2"	0.52	0.51	0.41	0.83	0.75	1.84
2/0	1/4", 5/16", 3/8"	0.27, 0.33, 0.41	0.56	0.46	0.83	0.87	2.06
	1/2"	0.52	0.56	0.46	0.83	0.83	2.06
3/0	5/16", 3/8", 1/2"	0.33, 0.41, 0.52	0.62	0.51	0.91	0.89	2.2
4/0	5/16", 3/8", 1/2"	0.33, 0.41, 0.52	0.68	0.56	1.02	0.94	2.38