

## 1. How to connect to the Switch?

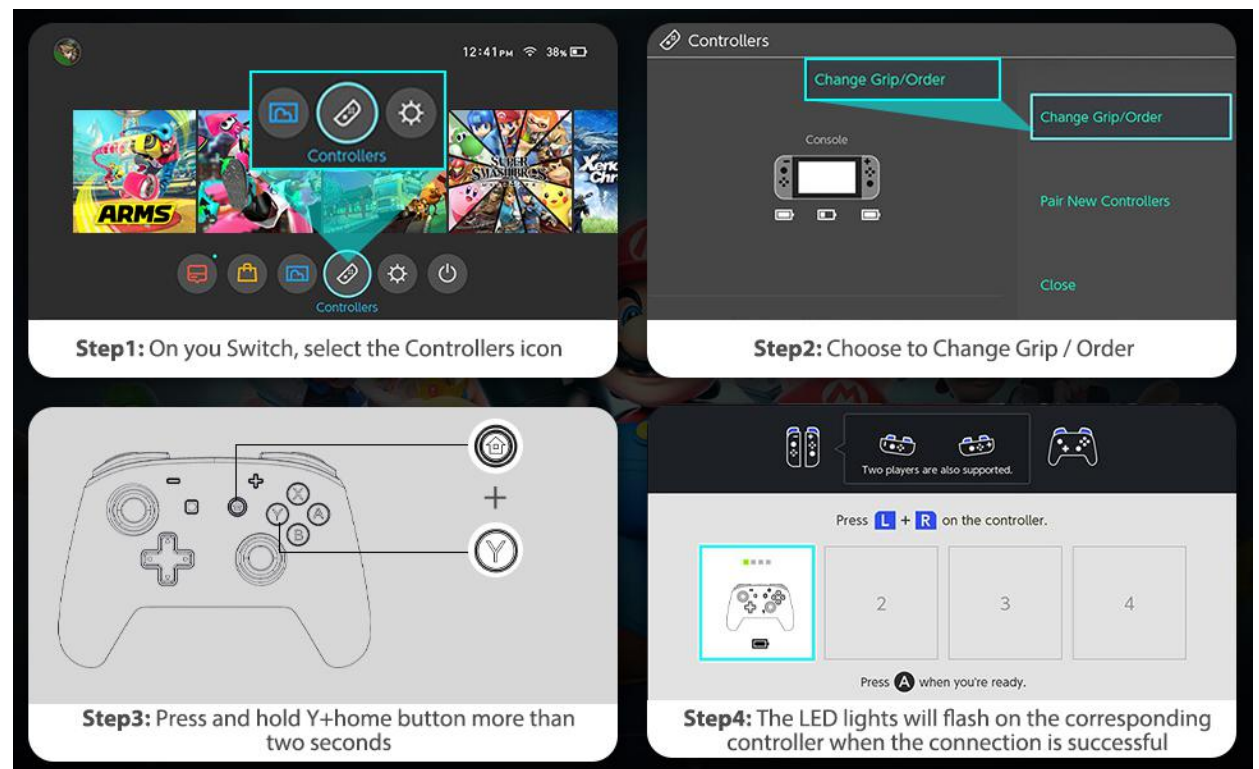
### First pairing:

Step 1: Boot into the main interface of the Switch, select the handle icon next to the settings, and click to enter

Step 2: After jumping to the interface, select Change Grip / Order

Step 3: Press and hold the y+home button for more than two seconds, the indicator light flashes back and forth, release your finger

Step 4: After the connection is successful, the successfully matched controller pattern will appear on the switch, and the LED light on the corresponding controller will flash



### For second pairing:

the controller only connects by briefly pressing the Home button. Up to four controllers can be connected to one Nintendo Switch / Nintendo Switch Lite simultaneously.

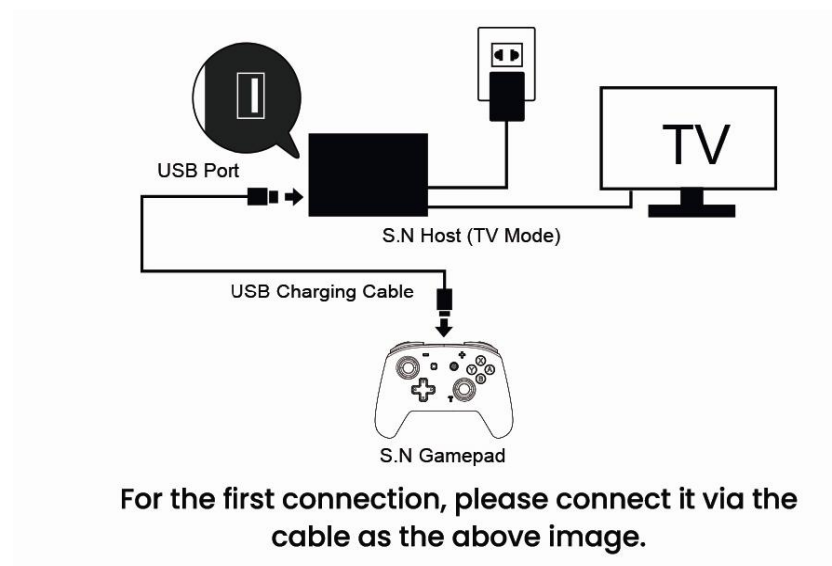
### Connection with PC:

Plug the USB cable of the controller directly into the USB port of the computer. If LED1 + LED4 remains on, it means pairing was successful.

## 2. What should I do if my bluetooth won't connect?

Please try the following three methods:

1. You clear the previously connected device in the switch settings, and then press Y+home to try to reconnect (if this method does not work, please try the second method)
2. After booting through a wired connection, try it again with a wireless connection. After the wired connection is successful, you can connect via Bluetooth. The following are the steps for wired connection. I will send you the picture to see.



In the first step, you need to connect your controller to the USB charging cable, and then connect the other end of the USB charging cable to your switch. Next, plug the charging head into the socket. After a while, the wired connection is successful.

3. [https://drive.google.com/drive/u/0/folders/1GtsELW\\_v6Pjt-Q0G5tRGcXOq89FiNLIM](https://drive.google.com/drive/u/0/folders/1GtsELW_v6Pjt-Q0G5tRGcXOq89FiNLIM)

If the previous two methods do not work, you can download from this website Try our upgrade program upgrade. Connect and try again after the upgrade is successful.

## 3. How to set the vibration intensity? How to set the turbo key?

Dear friends, did you switch the screenshot button to the Turbo function key beforehand? The vibration intensity can only be set after the switch is successful. Here are the setup steps:

You need to switch the screenshot button to the turbo button first:

Hold down the right stick while pressing the capture key ("O" key). The LED backlight of the joystick is red, indicating that the switch is successful.

#### 1. TURBO function settings:

Press and hold the "TURBO" button (the screenshot key), then press the button for which you want to set the turbo function. (Keys that can be set as TURBO buttons: A, B, X, Y, L, R, ZL, ZR)  
After the setting is successful, the backlight ring will flash red.

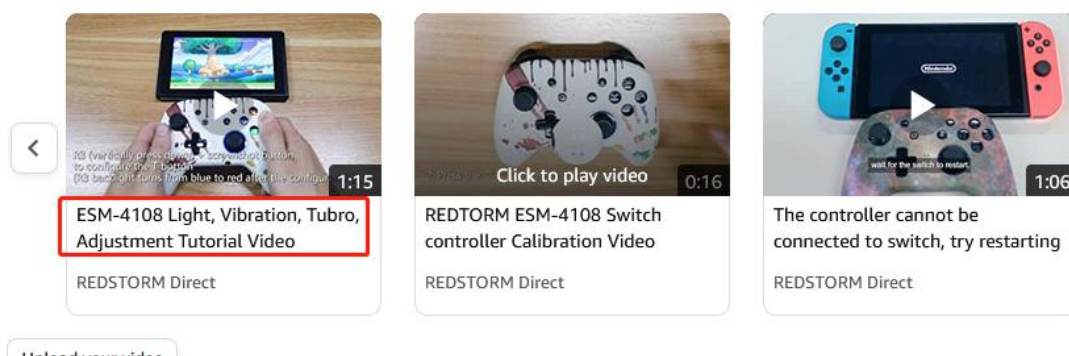
#### 2. Set the vibration intensity:

Press and hold the TURBO button first, then press the up directional button to increase vibration. First press and hold the TURBO key, and then press the down arrow key to reduce vibration.

**There are related video explanations on our controller page, you can take a look**

## Videos

### Videos for this product



#### 4. What should I do if my product won't charge or turn on at all?

You can use your pc to go to this website:

<https://drive.google.com/file/d/12QfyjBCCYInnHyZU-kyUB7H3F-9Opv9S/view?usp=sharing> to download the upgrade program. The upgrade method and video are inside. After the upgrade, the problem of no charging and no power on can be solved.

**Dear friend. The above are the problems that our customers often encounter. If you have any problems that cannot be solved, you can contact me in time, and I will solve it for you!**

**We have always put improving product quality and customer service as the most important thing! Please do not return the product or refund easily. If the product**

**has quality problems, we will send you a new controller.**