

User Manual of Product 1:

Logitech G733 LIGHTSPEED Wireless Gaming Headset with suspension headband, LIGHTSYNC RGB, Blue VO!CE mic technology and PRO-G audio drivers, Lightweight, 29 Hour battery life, 20m range - Black

User Manual of Product 2:

Logitech G213 Prodigy Gaming Keyboard, LIGHTSYNC RGB Backlit Keys, Spill-Resistant, Customizable Keys, Dedicated Multi-Media Keys, QWERTY UK Layout - Black

logitech G733 Wireless Gaming Headset Instruction Manual

December 12, 2021January 29, 2022

Contents [[hide](#)]

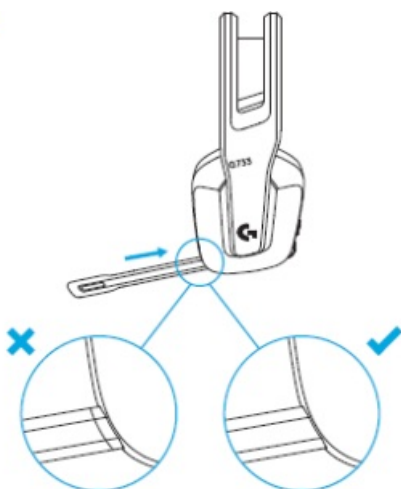
- 1 G733 Wireless Gaming Headset
 - 1.1 SETUP INSTRUCTIONS
 - 1.2 SIZE ADJUSTMENT
 - 1.3 FEATURES
 - 1.4 SPARE PARTS
 - 1.5 LOGITECH G HUB SOFTWARE
 - 1.6 RECYCLING
 - 1.7 BATTERY REMOVAL FOR RECYCLING
- 2 Documents / Resources
 - 2.1 Related Manuals / Resources

G733 Wireless Gaming Headset

SETUP INSTRUCTIONS

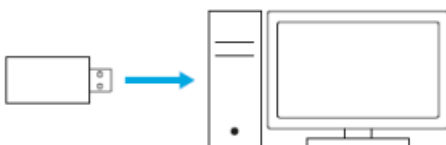
1. Insert the mic boom completely into the headset.
2. Insert receiver into the USB port of your PC.
3. Short press to turn ON.
4. (Optional) Download Logitech G HUB software to access advanced features.

1



Download at logitechG.com/ghub
logitechG.com/ghub

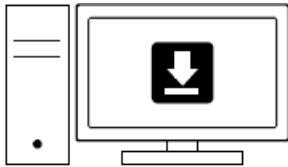
2



3



4



logitechG.com/ghub

SIZE ADJUSTMENT

1. The earcups can be adjusted up and down.
2. The length of the headband can be adjusted.

FEATURES



1. Size-adjustable earcups
2. Removable and replaceable mic
3. USB-C port for charging
4. ON/OFF button
5. Reversible and replaceable headband strap
6. Headband strap adjusting feature
7. Removable and replaceable earpads
8. Mute/unmute button
9. Volume roller

SPARE PARTS

UNDERSTAND

1 When battery life is below 10%, the audio will beep every 15 min. You can find replacement parts at logitechG.com in selected regions, including:

- Headband strap

- Earpads
- Mic
- Cable

2 When battery life is below 2%, the lights will flash red and the audio will beep every 15 min.

3 When plugging the charging cable, the lights will breath green 5 times and revert to its previous state.

4 When muting the mic, the lights will flash red and the audio will beep twice.

5 When unmuting the mic, the lights will flash green and the audio will beep three times.

6 When using G HUB software, pressing the ON/OFF button once when the headset is ON will let you know the battery life remaining.

- Receiver

LOGITECH G HUB SOFTWARE

RECYCLING

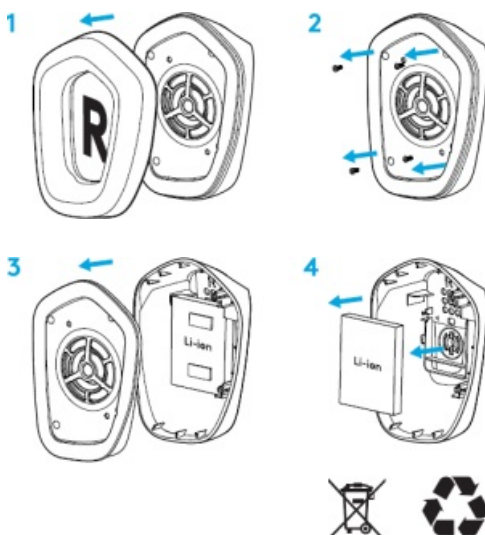
(Optional) Download Logitech G HUB software to access advanced features. Download at logitechG.com/GHUB. Logitech G HUB software lets you customize many features, including:

- Enable/disable DTS Headset:X 2.0 Surround Sound

We encourage you to resell or donate working products. Otherwise, batteries, electronic and electrical equipment should not be disposed of with household waste. Wherever possible, they should be segregated and brought to an appropriate collection point to enable recycling and avoid potential impacts on the environment and human health. For more information, contact your local authorities or place of purchase, or visit www.logitech.com/recycling

- Enable/disable Blue VOICE mic enhancement
- Adjust EQ settings
- Sidetone
- Lighting
- Mute button assignment

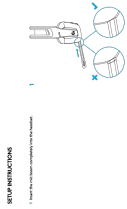
BATTERY REMOVAL FOR RECYCLING



QUESTIONS?

logitechG.com/support/g733 www.logitech.com/recycling

Documents / Resources



[logitech G733 Wireless Gaming Headset](#) [pdf] Instruction Manual
G733, Wireless Gaming Headset, Headset



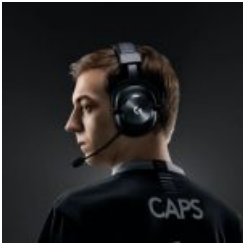
[logitech G733 Wireless Gaming Headset](#) [pdf] User Guide
logitech, G733, Ultra-Lightweight, Wireless, Gaming, Headset

Related Manuals / Resources



[logitech Wireless Gaming Headset Instructions](#)

logitech Wireless Gaming Headset SETUP INSTRUCTIONS Insert the mic boom completely into the headset. Insert receiver into the...



[logitech Pro X Wireless LightSpeed Gaming Headset User Guide](#)

logitech Pro X Wireless LightSpeed Gaming Headset A Quick Look
FEATURES Microphone mute toggle Volume wheel Power switch...



[logitech Headset Wireless User Guide](#)

WIRELESS HEADSET H600 Complete Setup Guide KNOW YOUR
PRODUCT CHARGING AND CONNECTING THE HEADSET 1. Connect
the...



[logitech G435 Wireless Gaming Headset User Guide](#)

G435 SETUP GUIDE LIGHTSPEED CONNECTION Connect to your PC,
Mac, PlayStation 5, or 4 with LIGHTSPEED Wireless Technology...

[Manuals+.](#)

- [home](#)
- [privacy](#)

Troubleshooting gaming-keyboard profile detection using Logitech Gaming Software

You can configure your gaming keyboard separately for each game or application on your computer (see [360023244954](#) for instructions). When a game is launched, the profile associated with it should activate. Sometimes, the profile doesn't activate properly, which can prevent game-specific settings from being applied.

When a game profile isn't activating properly:

- Try using a Persistent Profile (see answer [360023244954](#) for instructions).

NOTE: Using a persistent profile will help you determine if the Logitech Gaming Software is working properly.

- Make sure the correct .exe file is selected for the game (see answer [360023244954](#) for help).
- Check that both the single player and multiplayer .exe files have profiles (see answer [360023244954](#) for help)