

Air Wick® Essential Mist has three time interval settings:

| Setting | Length of spray (seconds) | Frequency (minutes) |
|---------|------------------------------|------------------------|
| MINIMUM | 4 | 17 |
| MEDIUM | 5 | 12 |
| MAXIMUM | 6 | 10 |

It contains natural essential oils that transform into a fine fragrance mist. The mist released fills room with fragrances for a more natural atmosphere.

The Essential Mist device is based on piezo technology. Using a piezoelectric transducer, (a device that converts small amounts of energy from one kind into another) electrical energy is converted into extremely rapid mechanical vibrations. The vibrating plate oscillates on top of a saturated wick connected to our fragrance which will release a burst of mist and fragrance at certain intervals.

Essential Mist is powered by an electrical circuit, generated by x3 AA batteries.

The device will stop generating and releasing the mist and fragrance. The blue LED light surrounding the nozzle will also stop lighting up.

When necessary, replace the batteries. We do not recommend zinc-carbon batteries or rechargeable ones as these may not have enough power to operate your device for long periods.

Make sure device is turned off and directed away from the face. Open the device by holding the shroud firmly in one hand and placing the other hand underneath the base as a support.

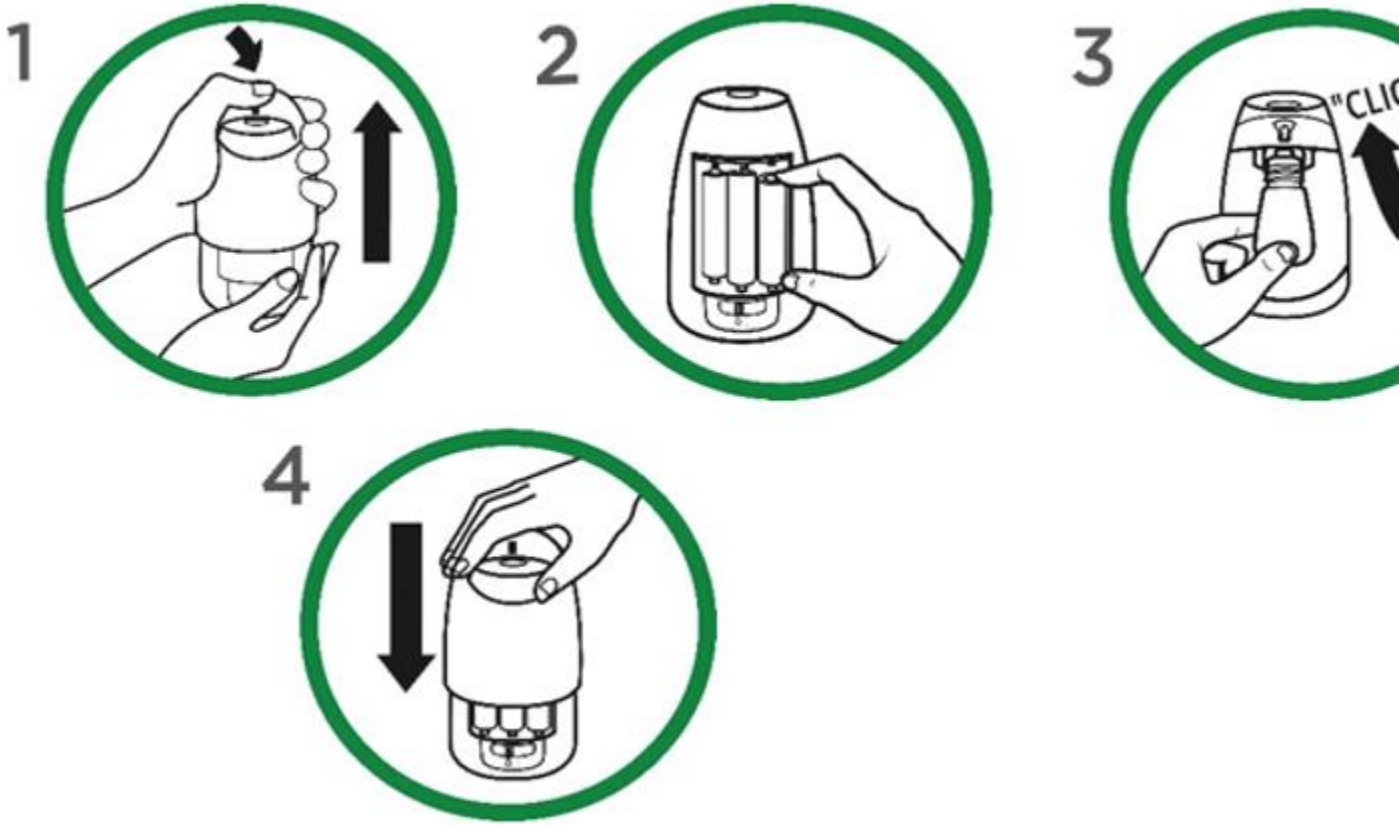
1. Using the thumb of the hand holding the shroud push down from the top. The shroud should be released from the main device, exposing the refill bottle and batteries.

2. Insert x 3 AA batteries into the appropriate slots.

3. Remove the old refill by gentle pulling it in a downwards movement away from the top of the device. Insert a new refill by removing the plastic lid of the refill bottle, and pushing the exposed wick in an upwards motion into the head of the device. The clip needs to catch the last ridge on the refill device. A clicking noise will be heard when inserted correctly and fully.

4. Replace the shroud

5. Turn on to the desired setting.



If the blue led light at the top of your device continues to show, however no mist or fragrance is released the refill may need replacing. Depending on the intensity of the setting selected this is typically between 16 – 45 days.

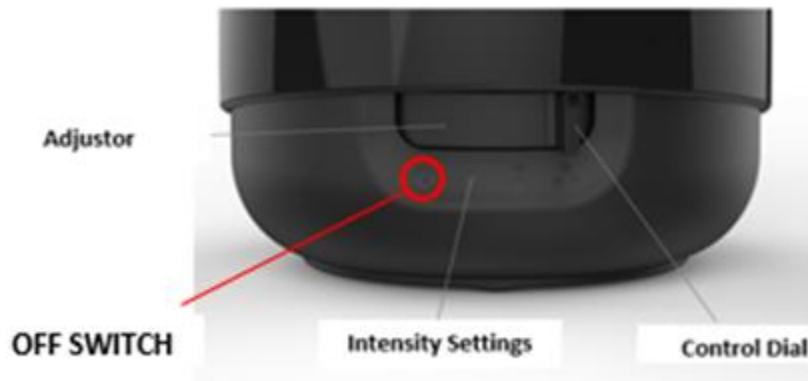
There are 3 levels of intensity:



Dispose of the empty glass bottle or recycle according to local regulations.

The blue light is an indicator that the device is on. It will light when the device is releasing fragrance

The furthest left option on the control panel, located at the bottom of the device is the off switch. This will turn the device off and no mist or fragrance will be released. If the device is not going to be used for long periods of time, it is suggested that the refill and/or batteries are removed



Essential Mist is designed to automatically turn off after 8 hours of use. No mist or fragrance will be released after this duration. Once the refill is empty the device will no longer spray. Please turn off the device and replace the refill.

When the switch on the control panel is moved from the off position to either of the 3 settings (min, med, max) the device is turned on and will run for 8 hours unless switched off.

By moving the switch to the off position during the 8 hour cycle will terminate that cycle. Once turned on again, the timer will reset and a new 8 hour cycle will begin.

Changing the intensity setting will not reset the cycle.

The device is suitable to be placed on any flat surface e.g. Shelf or cupboard unit. It should not be kept near a heating source or in direct sunlight. The device should be kept out of reach of children and pets and used in well ventilated areas. Should not be placed in sleeping areas.

No, testing has not been done on any other refills other than those designed and created by Air Wick, therefore it is not advised to use other refills with this device.

No, product will only accommodate the Essential Mist refill.

If mist/ intensity is too strong or weak, adjust the setting to either a higher or lower degree based on preference

Up to 45 days on lowest setting.

Once started, it runs for 8 hours. After stopping, it re-starts at the same time the next day.

Directions are printed on underside of blister card.

Check the diffuser is turned off and directed away from the face. Ensure the spray nozzle is visible at the top of the diffuser. If not, you may have incorrectly replaced the shroud which may prevent the release of fragrance.

Check the fragrance doesn't need replacing. To do this open the diffuser by holding the outer cover firmly in one hand and placing the other hand underneath the base as a support. Using the thumb of the hand holding the outer cover, push down from the top. The cover should be released from the main diffuser, exposing the refill bottle and batteries. You should be able to see the level of fragrance remaining in the refill bottle. If there is no fragrance left the refill needs replacing.

If there is still fragrance remaining, make sure the refill bottle is fully inserted into the diffuser. If this has come dislodged or is not inserted correctly, it may result in failure of mist generation.

You should also check the batteries are still operating. To do this open the diffuser as before and replace the batteries with x3 new AA/LR6 batteries. Reinstall the outer cover and turn the diffuser on. If the diffuser still fails to emit a mist call the Air Wick help line at: 1-800-228-4722

Product Safety evaluation and risk assessment has been carried out based on review of the safety of each of the raw ingredients and exposure assessment relevant to this format. Based on the information provided to Product Safety and the available toxicological data available in literature on the raw material categories, the proposed Air Wick Essential Mist Aroma diffuser and formulation variants do not pose a significant risk to human health when used appropriately and according to instructions.

Wipe up as much of the spill as possible using a soft cloth. Make sure hands are washed thoroughly after handling. If refill comes into contact with eyes, rinse with plenty of water for 20 minutes. After this time if eye irritation persists, consult a doctor or healthcare professional. If swallowed consult a doctor or healthcare professional.

Safety evaluation and toxicology reviews have not been performed on any other refills other than those designed and created by Air Wick, therefore it is not advised to use other refills with this diffuser.

If you have any issues with the product, please contact our Air Wick team on 1-800-228-4722.