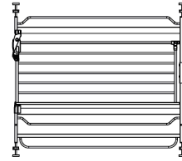




Easy Step Safety Gate
Barrière de Sécurité à Ouverture Facile
Reja de Seguridad Easy Step

Model / Modèle / Modelo: 1166A, 1166B, 1166P



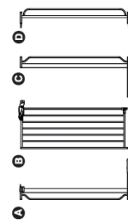
- READ ALL INSTRUCTIONS BEFORE ASSEMBLY AND USE OF GATE.
- LIRE TOUTES LES INSTRUCTIONS AVANT D'ASSEMBLER ET D'UTILISER LA BARRIÈRE.
- CONSERVEZ CES INSTRUCTIONS POUR UNE UTILISATION ULTÉRIEURE.
- GUARDE LAS INSTRUCCIONES PARA USAR LA REJA.
- GUARDELAS PARA UTILIZARLAS COMO REFERENCIA.

www.regalobaby.com

© 2020 Corporate Center Drive, Suite 100 / Bureau, 1166, WI 53018 USA / É.É. S.É.
 © 886.272.8291 (US, only) / Ave República esteñer / calle de EE. UU. / No. / 886.272.8291

Made in China / Fabriqué en Chine / Hecho en China

Before Assembly



PLEASE CHECK TO MAKE SURE YOU HAVE THE FOLLOWING PARTS:

- A) Gate Door Panel (1)
- B) Side Frame Half (1)
- C) Extension (1)
- D) Threaded Spindle Rod (4)
- E) Wall Mount Screws (4)
- F) Gate Door Panel (1)
- G) Right Side Frame Half (1)
- H) Frame Assembly (1)
- I) Screws (2)
- J) Hex Key (1)

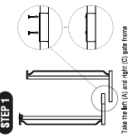
NOTE

MODEL NO.	MAX. SIZE
1166H	29" → 36.5" (74 → 92.7 cm)
1166B	29" → 36.5" (74 → 92.7 cm)
1166P	29" → 36.5" (74 → 92.7 cm)

REMOVING YOUR GATE FROM THE WALL
 To remove your gate from the wall, simply lift the adjustment knob above the gate door panel and pull the gate down to separate it from the wall. Then, pull the gate down to separate it from the wall. Then, pull the gate down to separate it from the wall.

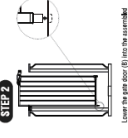
CARE AND MAINTENANCE
 Periodically check the gate for any signs of wear or damage. If you notice any signs of wear or damage, stop using the gate immediately. Do not use the gate if you notice any signs of wear or damage. Do not use the gate if you notice any signs of wear or damage.

English



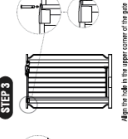
STEP 1

Slide the side frame half into the hole in the gate door panel. Push the side frame half into the hole in the gate door panel. Push the side frame half into the hole in the gate door panel.



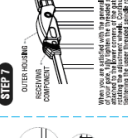
STEP 2

Slide the extension into the hole in the side frame half. Push the extension into the hole in the side frame half. Push the extension into the hole in the side frame half.



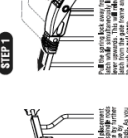
STEP 3

Slide the threaded spindle rods into the holes in the extension. Push the threaded spindle rods into the holes in the extension. Push the threaded spindle rods into the holes in the extension.



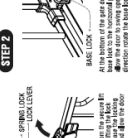
STEP 4

Slide the side frame half into the hole in the wall. Push the side frame half into the hole in the wall. Push the side frame half into the hole in the wall.



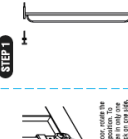
STEP 5

Slide the gate door panel into the hole in the side frame half. Push the gate door panel into the hole in the side frame half. Push the gate door panel into the hole in the side frame half.



STEP 6

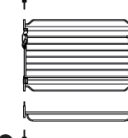
Slide the extension into the hole in the gate door panel. Push the extension into the hole in the gate door panel. Push the extension into the hole in the gate door panel.



STEP 7

Slide the threaded spindle rods into the holes in the extension. Push the threaded spindle rods into the holes in the extension. Push the threaded spindle rods into the holes in the extension.

Adding a Gate Extension



STEP 1

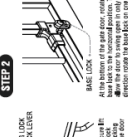
Remove the top end bottom threaded spindle rod from the gate. Push the top end bottom threaded spindle rod from the gate. Push the top end bottom threaded spindle rod from the gate.



STEP 2

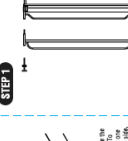
Slide the gate extension into the hole in the wall. Push the gate extension into the hole in the wall. Push the gate extension into the hole in the wall.

Operating the Door Latch



STEP 1

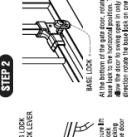
Turn the latch key to the right. Push the latch key to the right. Push the latch key to the right.



STEP 2

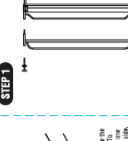
Turn the latch key to the left. Push the latch key to the left. Push the latch key to the left.

Positioning and Attaching Wall Cups



STEP 1

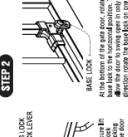
Position the wall cup in the hole in the wall. Push the wall cup into the hole in the wall. Push the wall cup into the hole in the wall.



STEP 2

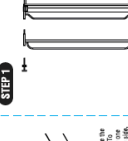
Slide the wall cup into the hole in the wall. Push the wall cup into the hole in the wall. Push the wall cup into the hole in the wall.

Replacing the Gate Extension



STEP 1

Remove the top end bottom threaded spindle rod from the gate. Push the top end bottom threaded spindle rod from the gate. Push the top end bottom threaded spindle rod from the gate.



STEP 2

Slide the gate extension into the hole in the wall. Push the gate extension into the hole in the wall. Push the gate extension into the hole in the wall.

Replacement Parts

- Hardware Kit #1002 Includes:**
 - Threaded Spindle Rods of Adjustment
 - Measuring Pins (1), 1" Wall Mount Screws (2), Wall Caps (4), Hex Key (1)
- Hardware Kit #1003 Includes:**
 - Threaded Spindle Rods of Adjustment
 - Measuring Pins (1), 1" Wall Mount Screws (2), Wall Caps (4), Hex Key (1)

Need more width? Additional extensions sold separately.

www.regalobaby.com