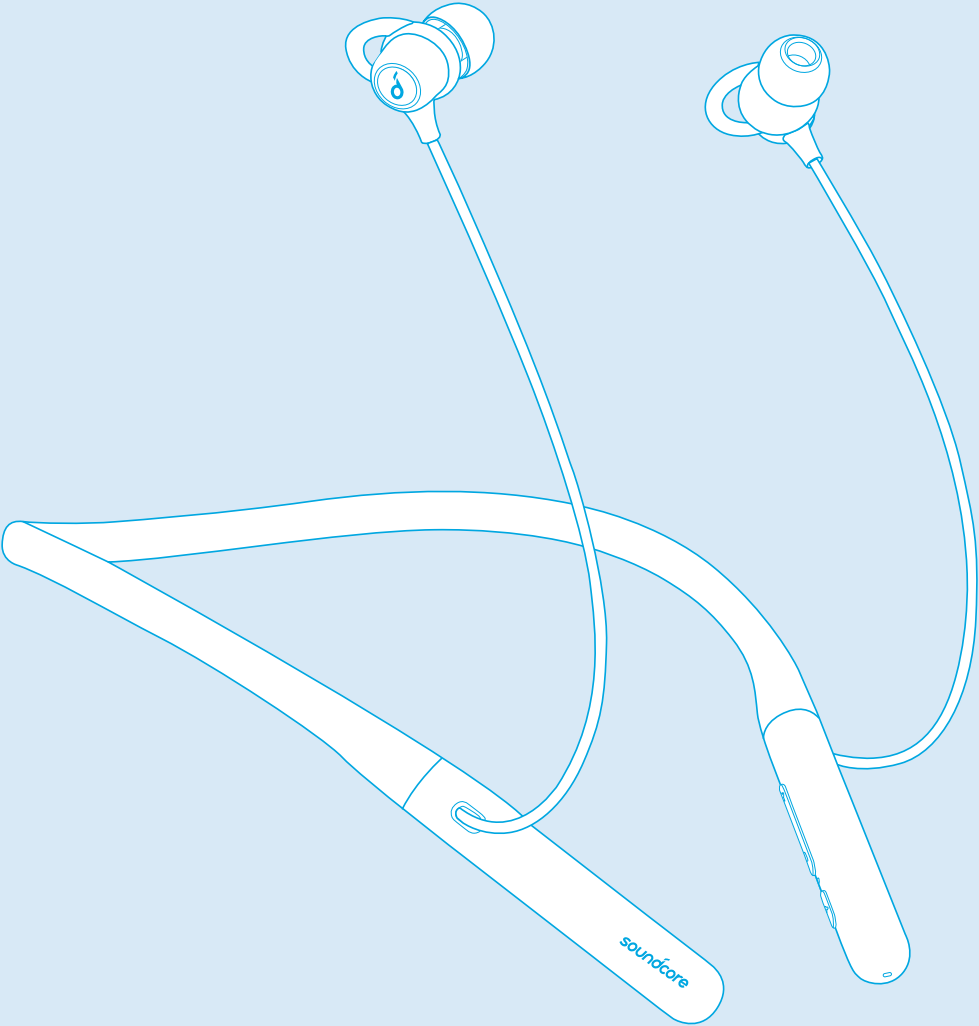


soundcore



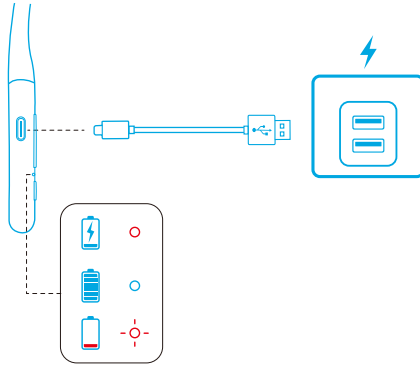
Soundcore Life U2

Quick Start Guide

Charging



- Fully dry off the USB port before charging.
- To prevent damage, use the provided USB-C cable.



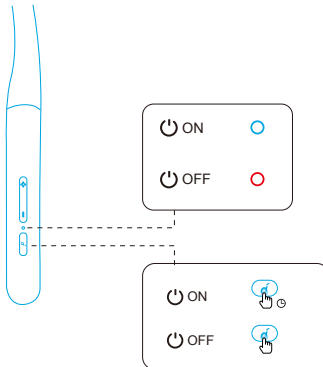
LED indicator

	Steady red	Being charged
	Steady blue	Fully charged
	Flashing red	Low battery

Powering On/Off

Press and hold the multi-function button for 1 second to power on.

Press and hold the multi-function button for 3 seconds to power off.



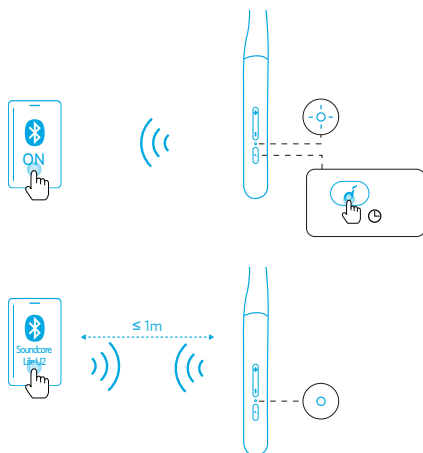
LED indicator

	Steady white for 1 second	Powered on
	Steady red for 1 second	Powered off



Bluetooth Pairing

When powered on, find "Soundcore Life U2" in the Bluetooth list on your device and connect.

When powered off, press and hold the multi-function button for 3 seconds until the LED flashes blue to enter the Bluetooth pairing mode.

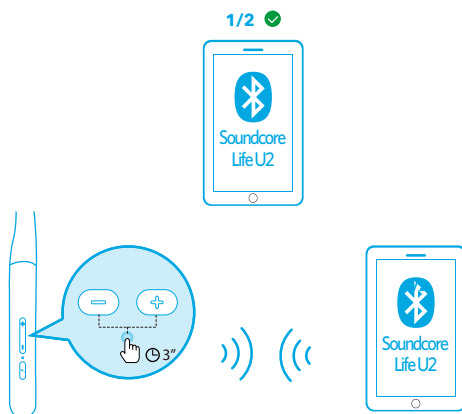


LED indicator

	Flashing blue	Bluetooth pairing
	Steady blue	Bluetooth connected

Multi-point Pairing Mode

When successfully connected with the first device, press and hold the volume up button and volume down button simultaneously for 3 seconds to pair with another device.



- Soundcore Life U2 can only play music on one mobile device at a time.
- Each time you power your Soundcore Life U2, it will automatically connect to your last successfully connected device if available.

Button Controls



Play / Pause		Press
Next track		Press and hold for 1 second
Previous track		Press and hold for 1 second
Volume up / down		Press
BassUp™ (Dual Equalizer)		Press and hold for 1 second simultaneously



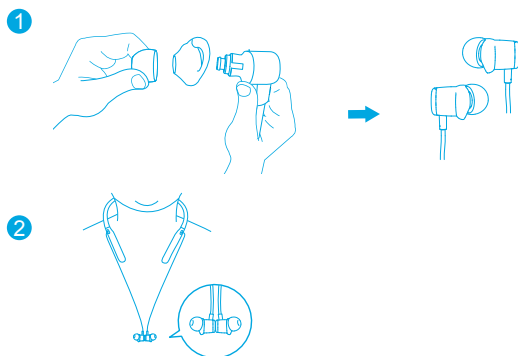
Answer / End a call		Press
Put the current call on hold and answer a new incoming call		
Reject a call		Press and hold for 1 second
Switch between held call and active call		



Activate Siri or other voice assistant software Press twice

Wearing

Choose the EarTips and EarWings that fit your ears best.



Reset

1. Make sure the headphone is powered off and being charged.
2. Press and hold the multi-function button and volume up button simultaneously for 5 seconds until the LED indicator flashes red twice.

→ All the memory data will be cleared.

Specifications

 Specifications are subject to change without notice.

Input	5 V $\overline{\text{DC}}$ 0.5 mA
Charging time	2 hours
Playtime (varies by volume level and content)	24 hours
Driver size	10 mm \times 2
Frequency response	20 Hz - 20 kHz
Impedance	16 Ω
Waterproof level	IPX7
Bluetooth version	V5.0
Bluetooth range	10 m / 33 ft

「スウェットガード」はカナルワークス株式会社の登録商標です。