

# REMINGTON®

## Ultimate Series RX5 Head Shaver

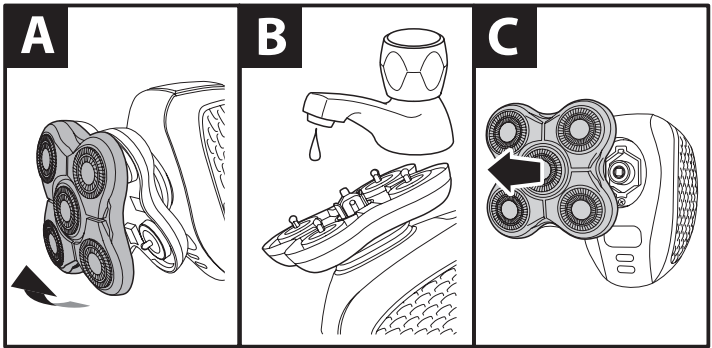
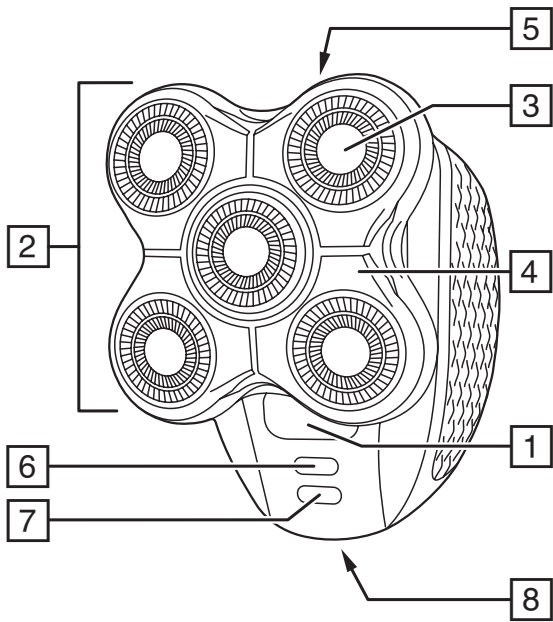


**XR1500**

 [www.remington.co.uk](http://www.remington.co.uk)

**Register online for an EXTRA year guarantee**

Visit [uk.remington-europe.com/product-registration](http://uk.remington-europe.com/product-registration) You must register within 28 days of purchase.




Thank you for buying your new Remington® product. Please read these instructions carefully and keep them safe. Remove all packaging before use.

---

## IMPORTANT SAFEGUARDS

---

- This appliance can be used by children aged from 8 years and above and persons with reduced physical, sensory or mental capabilities or lack of experience and knowledge if they have been supervised/instructed and understand the hazards involved. Children shall not play with the appliance. Cleaning and user maintenance shall not be done by children unless they are older than 8 and supervised. Keep the appliance and cable out of reach of children under 8 years.
- Always check the appliance before you use it. Do not use the appliance if it is damaged, as this may cause injury.
- The adaptor contains a transformer. Do not cut off the adaptor to replace it with another plug, as this causes a hazardous situation.
-  Suitable for use in a bath or shower.
- **WARNING:** Detach the shaver from the charging adaptor before cleaning it in water.
- Do not use the product with a damaged cord. A replacement can be obtained via our International Service Centres.
- **WARNING:** For recharging the battery, only use the charger supplied with the appliance - type reference PA-0505K (UK).
- Always replace a damaged adaptor with one of the original type.
- Do not use the appliance if it is damaged or malfunctions.
- This appliance should never be left unattended when plugged into a power outlet, except when charging.
- Keep the power plug and cord away from heated surfaces.
- Do not plug or unplug the appliance with wet hands.
- Do not twist or kink the cable, or wrap it round the appliance.
- This appliance is not intended for commercial or salon use.

---

## PARTS

---

1. On/off switch
  2. Head assembly
  3. Individual flexing heads
  4. Hairpocket
  5. Pop-up trimmer
  6. Battery indicator (red)
  7. Charging indicator (green)
  8. Charging connector
- Not shown:
- Adaptor
  - Head guard
  - Cleaning brush
  - Travel pouch

---

## CHARGING YOUR APPLIANCE

---

1. Ensure the product is switched off.
2. Connect the charging adaptor to the product and then to the mains.
3. Charge for 4 hours when using for the first time. This first charge is important to the shaver's battery life.

### INDICATOR LIGHTS

| Charge Level          | Indicator                |
|-----------------------|--------------------------|
| Charging              | Green light will come on |
| Fully Charged         | Green light will go off  |
| Battery charge is low | Red light will come on   |

- Your head shaver cannot be used when it is charging.
- When empty, the battery should be charged for 4 hours for a full charge and will provide up to 50 minutes of shaving time.
- To preserve the life of the battery do not charge the battery after each use. Best practice is to use the shaver until the red battery indicator flashes and then recharge.

---

## INSTRUCTIONS FOR USE

---

1. Hold the head shaver body in the palm of your hand. Press the on/off switch to turn the head shaver on.
2. Press the cutting heads against your scalp. It is not necessary to press hard to shave. Pressing hard does not cut closer and could increase irritation. The cutting head will flex to follow the contours of your head.
3. Move the shaver slowly around your head. You may use linear or circular strokes, whichever works best for your hair.

4. Use a hand held mirror to check the back of your head to confirm a complete and thorough shave. You may also use your other hand to feel for complete and consistent cutting.
5. We do not recommend that you use this product on facial hair.
6. When finished turn the shaver off.

---

## TIPS

---

- Do not attempt to shave head hair that is longer than 4 days growth or 2.0 mm. Your head shaver is intended to maintain a shaved look and can be used daily or every two or three days.
- If your hair is longer than 2.0 mm you should trim it down with a hair clipper first before using your head shaver.
- Your head shaver can be used dry or it can be used with shaving cream or gel in the shower.

---

## TRIMMING

---

The pop-up trimmer is located at the top of the shaver body. It can be used for trimming edges of beards, sideburns or ears.

1. To activate the trimmer, turn the shaver on then raise the trimmer by sliding the trimmer release button.
2. Use cutting strokes in the direction opposite to the direction that the trimmer folds away.
3. When finished fold the trimmer into its stored position.

---

## CARE FOR YOUR SHAVER

---

Care for your product to ensure a long lasting performance. We recommend that you clean it after each use.

- When cleaning your shaver, make sure it is turned off and disconnected from the charging adaptor cord.

## SAFETY MODE

- Your head shaver will turn itself off and enter safety mode if the demand on the battery is too high. This can be because of inadequate cleaning or excessive hair clippings in the hair pocket.
- If this occurs, open and clean your shaver. Once cleaned, connect it to the charging adaptor and then to the mains for a few seconds. This will reset the safety mode and you can then unplug and continue to use the device as normal.

## AFTER EACH USE

1. Open the shaver head (fig. A).
2. Empty out any hair clippings. The head can be rinsed under a running tap (fig. B).
3. Use a cleaning brush to remove any shaving debris.
  - The shaver is washable and can be cleaned by rinsing under warm water.
  - When using shaving creams or gels with the shaver it is especially important to clean after each use to prevent the gel from drying and clogging the cutters.
  - When cleaning the external surfaces of the shaver, do not use strong detergents or other chemicals.
  - To dry, wipe the surface of the shaver with a dry cloth or towel.
  - The shaver head assembly is designed to be detachable from the shaver body. Simply pull it away from the body of the shaver (fig. C). To reattach, align it with the opening on the body and click it into position.
  - To maintain optimum performance, the blades must be kept lubricated.
  - Apply a very small drop of light oil onto the inside of each separate cutter head. Hair clipper oil, sewing machine oil, or olive oil are all suitable for this purpose. (Silicone-based pressurised lubricants are not recommended.)
  - Oil should be applied weekly or if the shaver begins to 'pulse' indicating lubrication is required.
  - If your unit start pulsating, this can be simply resolved by applying a very small amount of light lubricating oil onto each separate cutter head whilst the unit is turned off.
  - Place a small drop of oil onto a fingertip and then touch the oiled fingertip to each cutter head, gently wiping the oil onto the cutter. Wipe any excessive oil off the surface of the cutters. Re-oil only as required.
  - Note: The cutter heads should be cleaned under running water after each use.

---

## BATTERY REMOVAL

---

We strongly recommend that a professional removes the rechargeable battery. Parts of the shaver case, and tools have sharp edges and may cause injury if not handled correctly.

- The rechargeable battery must be removed from the appliance before it is scrapped.
  - Disconnect the charging adapter before removing the battery.
1. Ensure the device is discharged of all power. To do this, switch it on and allow it to run until it stops.
  2. Pull off the shaver head assembly.
  3. Unscrew the screw on the top of the unit.
  4. Pry off the upper decorative panel.
  5. Pry off the two decorative side panels.

6. Unscrew the 6 screws on the inner housing
7. Pry off the inner housing to expose the printed circuit board.
8. Take out the printed circuit board assembly.
9. Disconnect the battery from the circuit board.
  - The battery is to be disposed of safely.
  - Do not attempt to operate the shaver once you have opened it.

---

## RECYCLING

---



To avoid environmental and health problems due to hazardous substances, appliances and rechargeable and non-rechargeable batteries marked with one of these symbols must not be disposed of with unsorted municipal waste. Always dispose of electrical and electronic products and, where applicable, rechargeable and non-rechargeable batteries, at an appropriate official recycling/ collection point.

---

## SERVICE AND GUARANTEE

---



Defects affecting product functionality appearing within the guarantee period will be corrected by replacement or repair at our option provided the product is used and maintained in accordance with the instructions. Your statutory rights are not affected.

This warranty shall not be valid where it is contrary to U.S. and other applicable laws, or where the warranty would be prohibited under any economic sanctions, export control laws, embargos, or other restrictive trade measures enforced by the United States or other applicable jurisdictions. This includes, without limitation, any warranty claims implicating parties from, or otherwise located in, Cuba, Iran, North Korea, Syria and the Crimea region.

To claim an extra 1 year guarantee, register your product online within 28 days of purchase.

Register at: <https://uk.remington-europe.com/product-registration>

Consumables are guaranteed only for their recommended lifecycle. Replacement/spare parts\* are excluded and are only covered by a 1 year warranty.

\*Examples include, but are not limited to, adaptors, haircare attachments, grooming accessories, etc.



---

## SERVICE CENTRE

---

### UNITED KINGDOM

 0800 212 438 (free call mainland UK)

Spectrum Brands (UK) Ltd


Fir Street, Failsworth, Manchester

M35 0HS, UK

[www.remington.co.uk](http://www.remington.co.uk)

[productsupport@Remington.co.uk](mailto:productsupport@Remington.co.uk)

### IRELAND

 142 951 40

Remington Consumer Products,

Unit B12, Ballymount Corporate Park,

Ballymount, Dublin 12

<https://ie.remington-europe.com>

[productsupport@Remington.co.uk](mailto:productsupport@Remington.co.uk)





**Ref. No. XR1500**

**Type No. R17A**

20/UK/ XR1500 T22-7001141-C Version 03 /20

Remington® is a Registered Trade Mark of Spectrum Brands, Inc., or one of its subsidiaries.

Spectrum Brands (UK) Ltd

Fir Street,

Failsworth,

Manchester

M35 0HS

[www.remington.co.uk](http://www.remington.co.uk)

© 2020 Spectrum Brands, Inc.