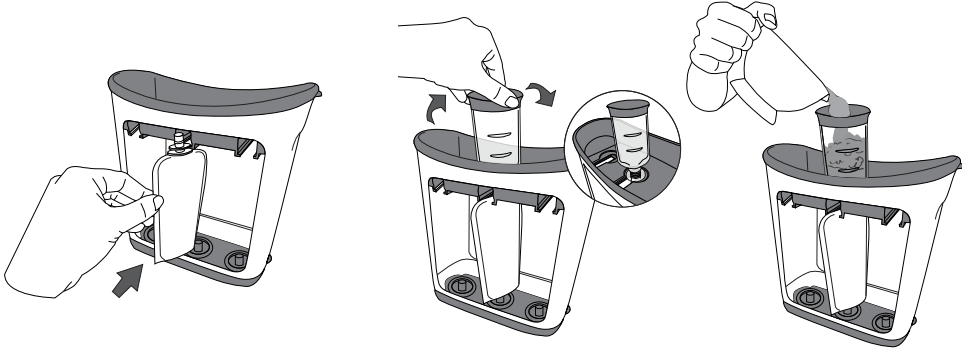
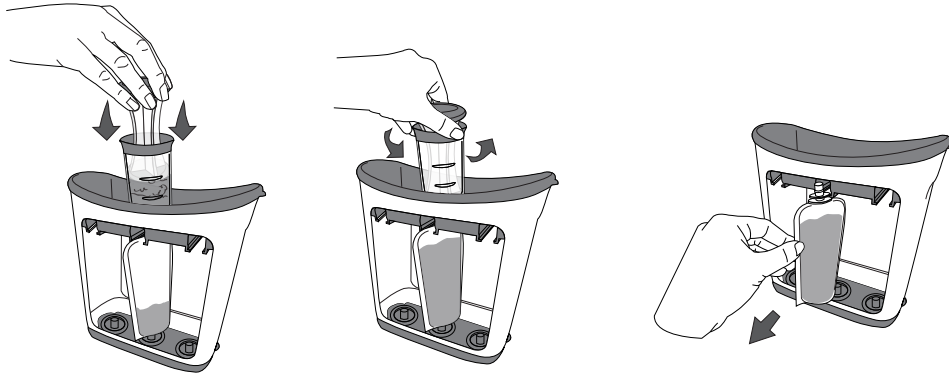


Filling your Squeeze Pouches™:

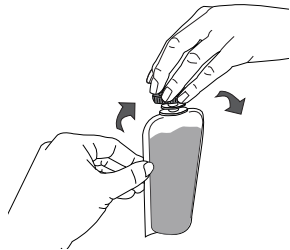


1. Slide Pouch fully into the Squeeze Station™. Pouch will fit snugly when secure.
2. Screw the Filling Tube onto the Pouch Spout.
3. Pour puree into the Filling Tube.



4. Use Press to push puree into Pouch.
5. Unscrew the Filling Tube from the Pouch Spout.
6. Remove Pouch from the Squeeze Station™.

Storing your Squeeze Station™:



7. Screw Cap on Pouch and refrigerate.

1. Place Press into one of your Filling Tubes. Align (3) Filling tubes inside the Squeeze Station™ on corresponding Storage Nubs.



Infantino
10025 Mesa Rim Rd. | San Diego, CA 92121 USA
www.infantino.com

BEFORE USING THIS PRODUCT: Review and save the Instruction Manual for future reference. Please call Infantino at 1-800-840-4916 (for US or Canada) with any questions or visit our website www.infantino.com. Made in China.

Squeeze Station™ Instructions

IMPORTANT! KEEP INSTRUCTIONS FOR FUTURE USE. Read all instructions before assembling and using this product. Failure to follow each instruction can result in serious injury or death to your baby.

▲ WARNING: This product is not a toy. DO NOT leave baby unattended with product at any time. Keep this product out of baby's reach. Adult assembly required. DO NOT microwave or boil food in water. Heat food by submerging pouch in hot water. Always test food temperature before serving to a child. Keep cap out of reach of children. Adult supervision is required. Pouch is not insulated- keep pouch cool. DO NOT use damaged pouches - do not reuse pouches. This is not a chew or teething toy.

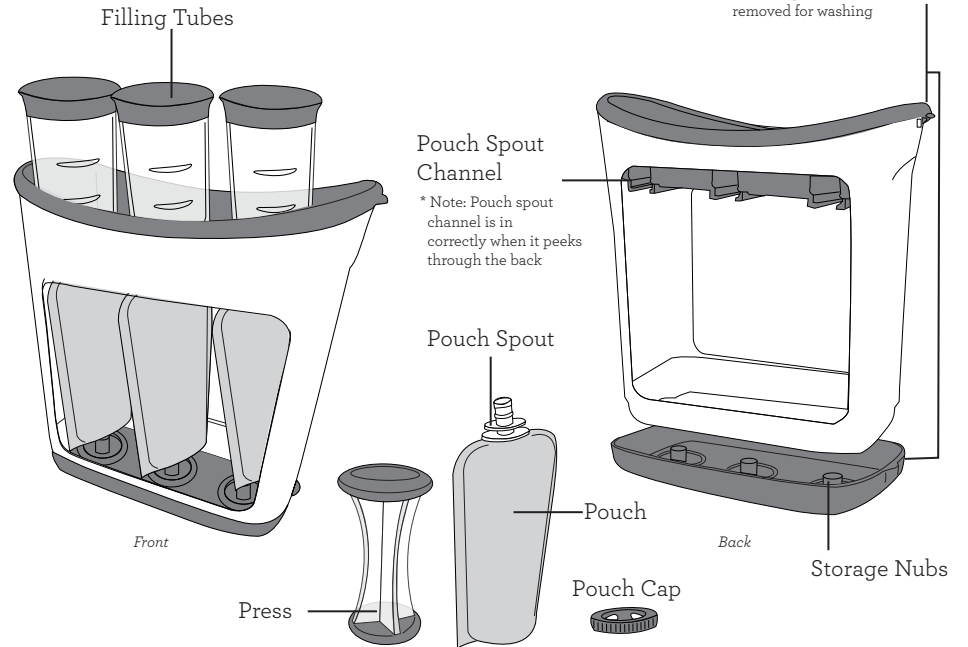
Helpful Hints:

Squeeze Pouches™ are great for children of all ages and stages. When babies are just starting solids, we recommend not giving the Squeeze Pouch™ directly to them. Just simply squeeze the puree from the Squeeze Pouch™ onto a spoon for use. When baby starts to self-feed, this is a good indication that they are ready to use the Squeeze Pouch™ on their own. Always remember adult supervision is required when child is eating.

Always remember to consult your pediatrician to ensure your child is at a proper developmental stage for diet changes.

Not for use with fatty foods such as olive oil, corn oil, etc.

Squeeze Station™



Cleaning and Care Instructions:

Wash the product thoroughly in warm soapy water (or in the top rack of a dishwasher) before using for the first time and after each use. Dry components thoroughly after washing.

1. Remove top and bottom color components from Squeeze Station™.
2. Place on top shelf of dishwasher or clean by hand. We recommend to use any bottle brush for hand washing.

This box includes: 1-Squeeze Station™ 3-Filling Tubes 1-Press 10-Squeeze Pouches™