

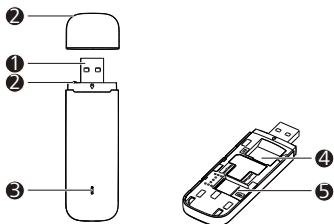
Thank you for choosing the Idea 4G netsetter. With your Idea 4G netsetter, you can access a wireless network at high speed.

Note:

This manual describes the appearance of the Idea 4G netsetter, as well as the procedures for preparation, connection steps.

Getting to Know Your Idea 4G netsetter

The following figure shows the appearance of the Idea 4G netsetter. It is provided only for your reference. The actual product may be different.

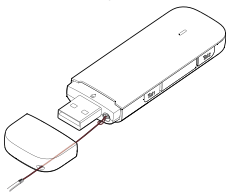


1 USB Connector

It connects the Idea 4G netsetter to a PC.

2 Strap Hole

You can tie the cap and the USB Stick together by threading a strap through the strap holes, so that the cap will not be easily lost.



3 Indicator

It indicates the status of the Idea 4G netsetter.

- Green, blinking twice every 2s: The Idea 4G netsetter is powered on.
- Green, blinking once every 0.2s: The software of the Idea 4G netsetter is being upgraded.
- Green, blinking once every 2s: The Idea 4G netsetter is registering with a 2G network.
- Blue, blinking once every 2s: The Idea 4G netsetter is registering with a 3G/3G+ network.
- Cyan, blinking once every 2s: The Idea 4G netsetter is registering with an LTE network.
- Green, solid: The Idea 4G netsetter is connected to a 2G network.
- Blue, solid: The Idea 4G netsetter is connected to a 3G network.
- Cyan, solid: The Idea 4G netsetter is connected to a 3G+/LTE network.
- Off: The Idea 4G netsetter is removed.

4 SIM Card Slot

It holds a Subscriber Identity Module (SIM) card.

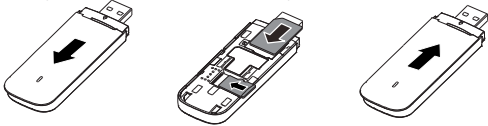
5 microSD Card Slot

It holds a microSD card.

Getting Your Idea 4G netsetter Ready

1. Slide the cover to remove it from the Idea 4G netsetter.
2. Insert the SIM card and the microSD card into the corresponding card slots, as shown in the following figure.

3. Replace the cover and slide it into place.



Note:

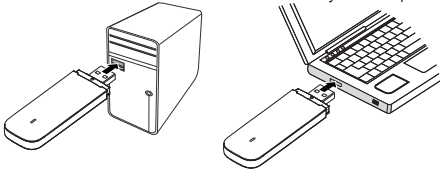
- The microSD card is an optional accessory. If it is not provided in the package, you can buy one yourself.
- Ensure that the beveled edge of the SIM card is properly aligned with that of the SIM card slot and the microSD card is inserted according to the direction as labeled on the microSD card slot.
- Do not remove the microSD or SIM card when the card is in use. Otherwise, the card as well as your Idea 4G netsetter may get damaged and the data stored on the card may be corrupted.

Using Your Idea 4G netsetter

The procedure for installation depends on your computer's operating system. The following sections are based on Windows OS.

Connecting to a Network

1. Insert the Idea 4G netsetter into one of your computer's USB ports.



The computer identifies the new hardware and starts its installation automatically.

2. When the installation is complete, the Idea 4G netsetter's web management page is displayed and the Idea 4G netsetter connects to the network automatically. The Idea 4G netsetter's web management page will be automatically displayed every time the Idea 4G netsetter is inserted into the computer.

Note:

- If the computer does not start the Idea 4G netsetter's installation automatically, find the **AutoRun.exe** file in the Idea 4G netsetter's root directory, and double-click the file to run it.
- If you are not connected to the network, access <http://192.168.8.1> to check the device status.
- If you cannot access <http://192.168.8.1>, disconnect other network connections, such as an Ethernet or Wireless Fidelity (Wi-Fi) connection, remove and then insert the Idea 4G netsetter, or restart the computer.

Disconnecting from a Network

Remove the Idea 4G netsetter from the computer.

Note:

If you do not need to connect to a network, it is recommended that you remove the Idea 4G netsetter from your computer to eliminate unwanted data traffic.

Viewing Service Information

Visit <http://192.168.8.1> to view your service information.

Note:

- The default user name is **admin**.
- The default password is **admin**.

The SAR limit adopted by India is 2.0 watts/kilogram (W/kg) averaged over one gram of tissue. The highest SAR value for this device is 1.61 W/kg.

LTE is a trademark of ETSI.