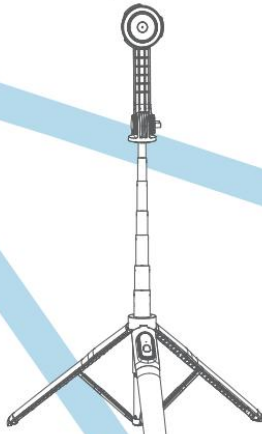


OMOTON

**VM03**  
Mobile Phone Selfie Tripod



User Manual

**Product Specifications**

Product Name	Mobile Phone Selfie Tripod
Model	VM03
Material	ABS+PC+Aluminum Alloy+Silicon+Magnet
Size	300x88x60mm
Weight	450g
Applicable Scenarios	Selfie, Outdoor Activities, Live Streaming

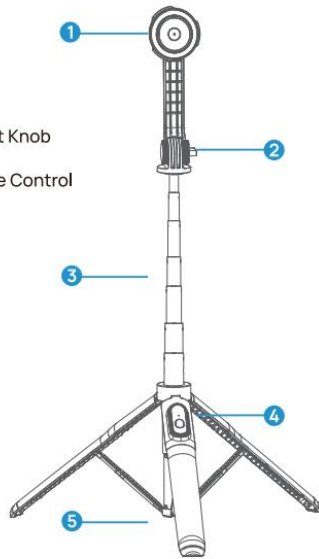
**Product Accessories**

- Selfie Stick
- Cleaning Kit
- Protective Film
- Metal Ring
- Positioning Card

EN-1

**Product Structure**

- 1. Magnetic Head
- 2. Angle Adjustment Knob
- 3. Telescoping Pole
- 4. Bluetooth Remote Control
- 5. Tripod



EN-2

**Instructions for use**

**1. Bluetooth Connection**

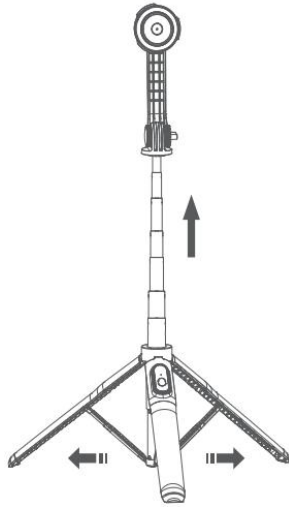
Press and hold the camera button on the remote control for 3 seconds. When the green light flashes, it enters the Bluetooth pairing state. Open the Bluetooth search on your phone and click "O-Mag" in the search devices to connect. After successful connection, the green light on the remote control will turn off.

Tips: When using the Bluetooth remote control for the first time, remove the isolation sheet from the remote control battery compartment.



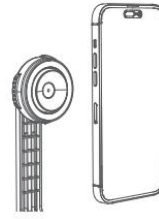
EN-3

**2. Using the Tripod**  
 Open the bottom tripod, extend the telescoping pole, and place the tripod on a stable level surface.

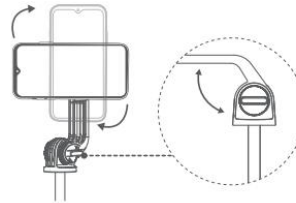


EN-4

**3. Fixing the Phone**  
 A. Install the phone onto the magnetic head.

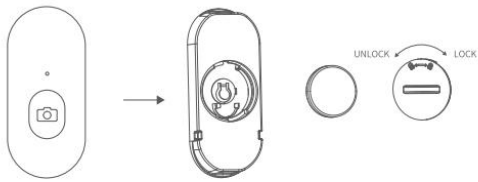


B. Rotate the phone or use the angle adjustment knob to adjust the phone to the appropriate shooting angle.



EN-5

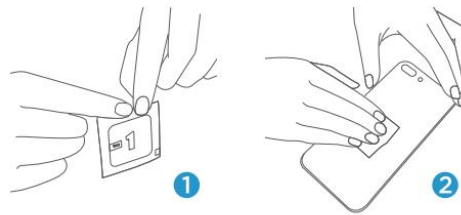
**4. Replacing the Remote Control Battery**  
 Turn the Bluetooth remote control to the back, remove the bottom cover of the remote control, and replace the button battery (CR1632).



EN-6

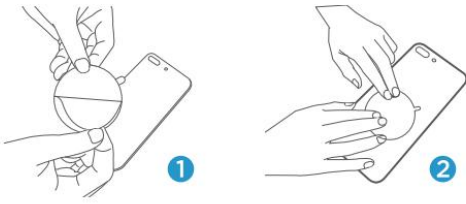
**Installation Steps of the Metal Ring**

1. Open the cleaning kit. Wipe the back of the phone or phone case with the wet alcohol cloth firstly, then dry with a dry cloth.

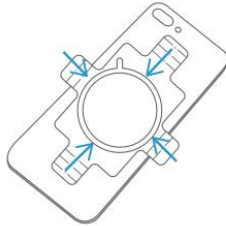


2. To better protect your phone or phone case, it is recommended to use the PE film. Tear off the PE film and stick it in the center of the back of the phone or phone case.

EN-7



3. Place the location card on the phone's back with the values on the symmetrical side equal to ensure the circle in the center.



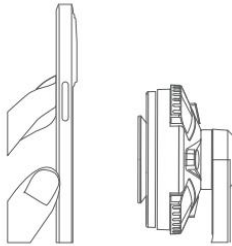
EN-8

4. Remove the metal ring's protective film, center it on the location card, and press it lightly. Remove the location card after confirming that the metal ring is in the exact center of the card, and then press the metal ring for 5 seconds. After that, wait six hours before using.



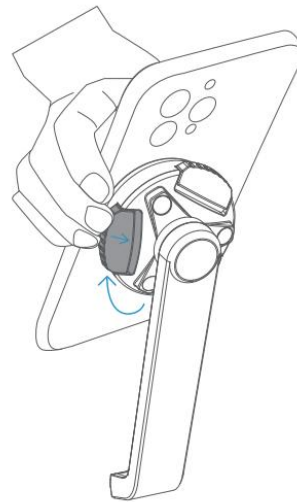
EN-9

5. Put your phone close to the magnetic mount, then it will automatically attach to the magnetic mount. At this point, the magnet and the vacuum suction cup will start working simultaneously to secure your phone to the selfie tripod.



6. Press and hold one of the release buttons and tilt the phone at the same time to take the phone off. Do not take the phone off directly as this could harm the phone.

EN-10



EN-11