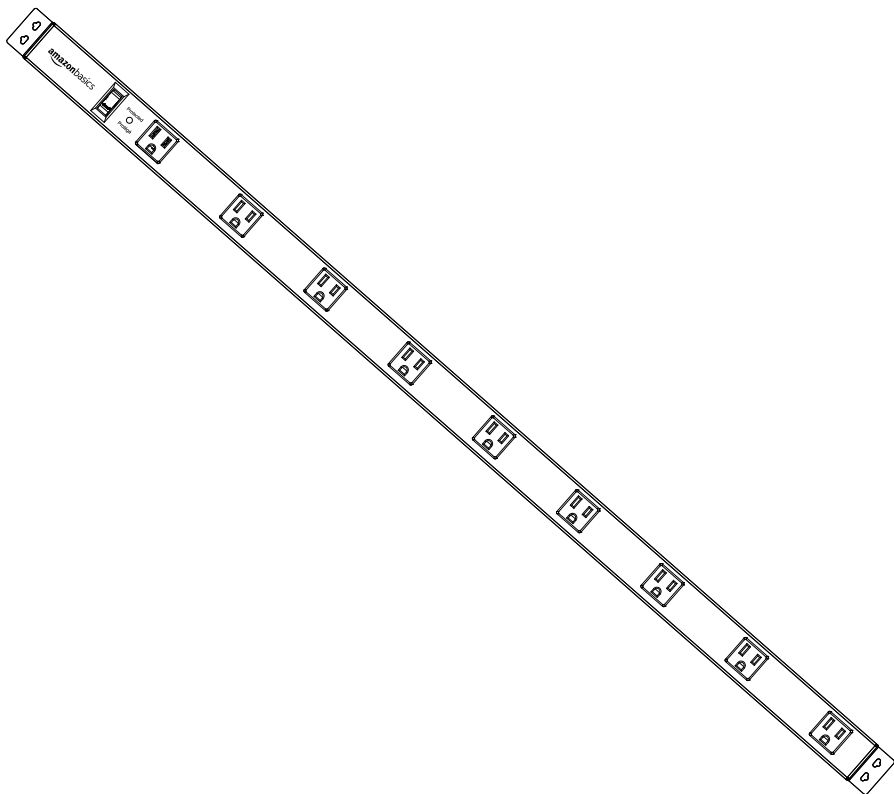


amazonbasics



Metal Surge Protector Power Strip

Enchufe Múltiple de Metal con Protector de Sobrevoltaje

Barre d'Alimentation en Métal Dotée d'Un Parasurtenseur

B07SNKGMVP, B07SG689YS, B07SG68M1N, B07SJ823RC

English

English	3
Español	10
Français	17

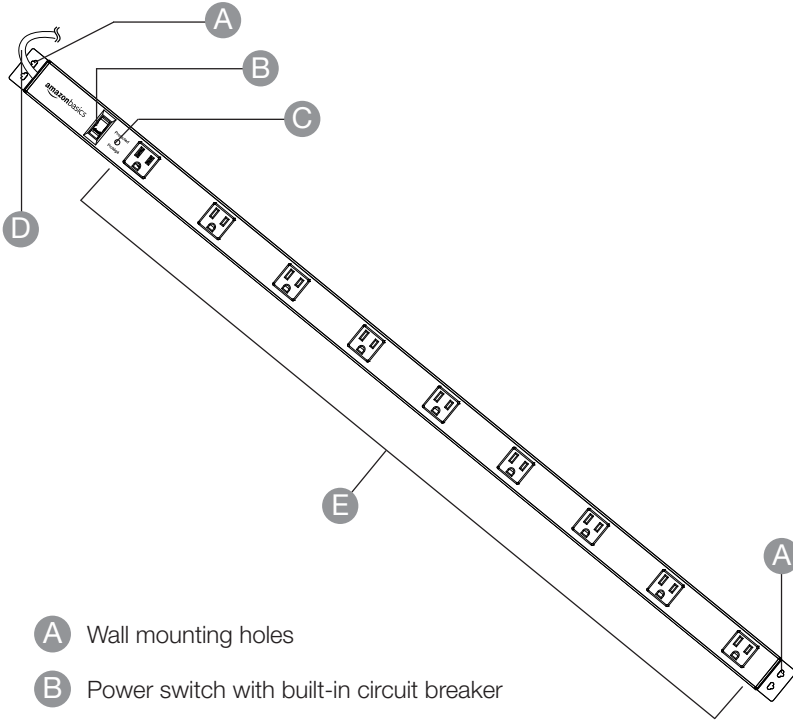
Español

Français

Welcome Guide • English

Contents:

Before getting started, ensure the package contains the following components:



- A** Wall mounting holes
- B** Power switch with built-in circuit breaker
- C** Surge protection indicator
- D** Power cord with a plug
- E** Surge protected outlets

You will need



NOTICE

The quantity of outlets varies between different models.

IMPORTANT SAFEGUARDS



Read these instructions carefully and retain them for future use. If this product is passed to a third party, then these instructions must be included.

When using electrical appliances, basic safety precautions should always be followed to reduce the risk of fire, electric shock, and/or injury to persons including the following:

⚠ CAUTION

Risk of injury or death! Do not use the product in General Patient Care Areas or Critical Patient Care Areas. They have not been evaluated for use where Article 517 of the National Electrical Code requires Hospital Grade components.

⚠ CAUTION

Risk of electric shock! Do not plug into another relocatable power taps or an extension cord.

- This product should not be used with aquariums, near water or any other source of moisture.
- Do not open the housing for any reason. There are no user-serviceable parts inside.
- To reduce the risk of electric shock - use only indoors.
- Keep away from children.
- Do not install this product if there is not at least 10 meters (30 feet) or more of wire between the electrical outlet and the electrical service panel.
- Connect the product directly to a grounded power outlet only.
- Do not exceed the maximum power output of the product.
- This device features an internal protection that will disconnect the surge protective component but will maintain power to the load – now unprotected. If this situation is undesirable for the application, follow the manufacturer's instructions for replacing the device.

Intended Use

- This product is intended for protecting the electronics from power surges or increases in voltage.
- This product is intended for household use only. It is not intended for commercial use.
- This product is intended to be used in dry indoor areas only.
- No liability will be accepted for damages resulting from improper use or non-compliance with these instructions.

Before First Use

- Check for transport damages.
- Remove all shipping protectors.
- Before connecting the product to the power supply, check that the power supply voltage and current rating corresponds with the power supply details shown on the product rating label.

⚠ DANGER

Risk of suffocation! Keep any packaging materials away from children – these materials are a potential source of danger, e.g. suffocation.

Wall installation

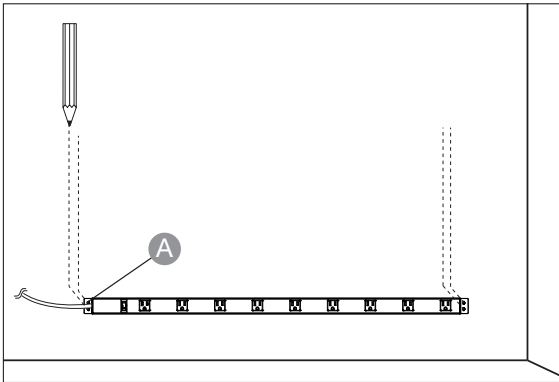
Step 1:

⚠ WARNING

Risk of electric shock! Take care not to drill into any pipes or power lines beneath the surface during mounting holes preparation. Use power line/metal detector.

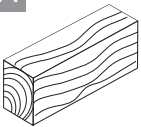
NOTICE

When choosing the place of installation, ensure there is a suitable power outlet within the reach of the product's power cord (D).

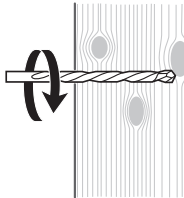
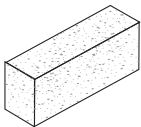


- Mark drilling holes using the wall mounting holes (A) as a template.

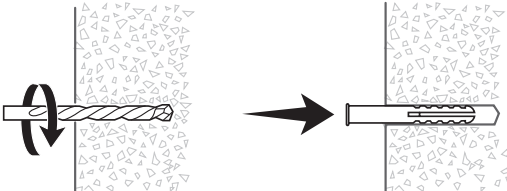
Step 2:

A

Ø 1/8"
Ø 3 mm

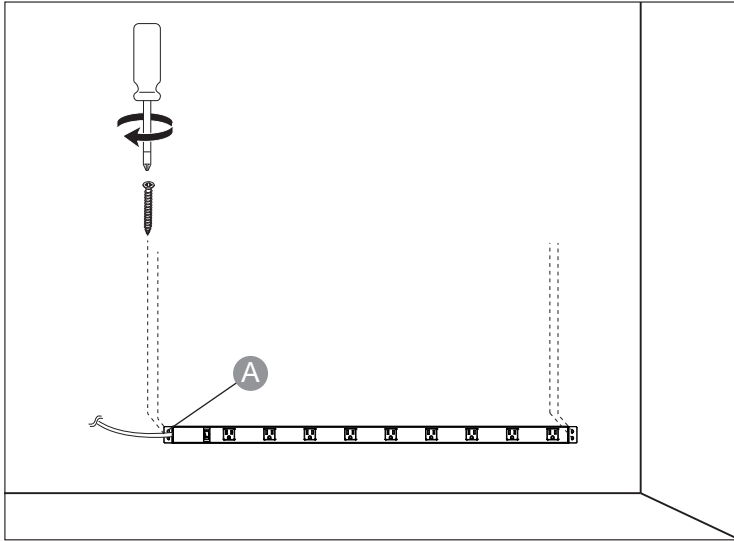
**B**

Ø 15/64"
Ø 6 mm



- Drill the mounting holes.
- For the concrete wall installation, place the wall plugs into the drilled holes.

Step 3:



- Secure the product with suitable screws.

Operation

⚠ WARNING **Risk of electric shock!** If the surge protection indicator (C) goes off, when the product is switched on, the built-in surge protection is no longer functioning. Unplug all the connected devices and replace the product.

NOTICE Do not overload the product's outlets. The product can accommodate a total equipment load of up to 15 A (1875 W) (whether plugged into a single outlet or spread out over multiple outlets). If the load exceeds 15 A, the built-in circuit breaker will trip and the outlets will stop providing power. In such case reduce the load by unplugging some devices and again set the power switch (B) to **RESET** position.

Switching on/off

- Connect the product to a suitable power outlet.
- To switch on, set the power switch (B) to **RESET** position. The power switch indicator (B) and the surge protection indicator (C) light up red.
- To switch off, set the power switch (B) to **OFF** position. The power switch indicator (B) and the surge protection indicator (C) go off.

Cleaning and Maintenance

⚠ WARNING **Risk of electric shock!** To prevent electric shock, unplug before cleaning.

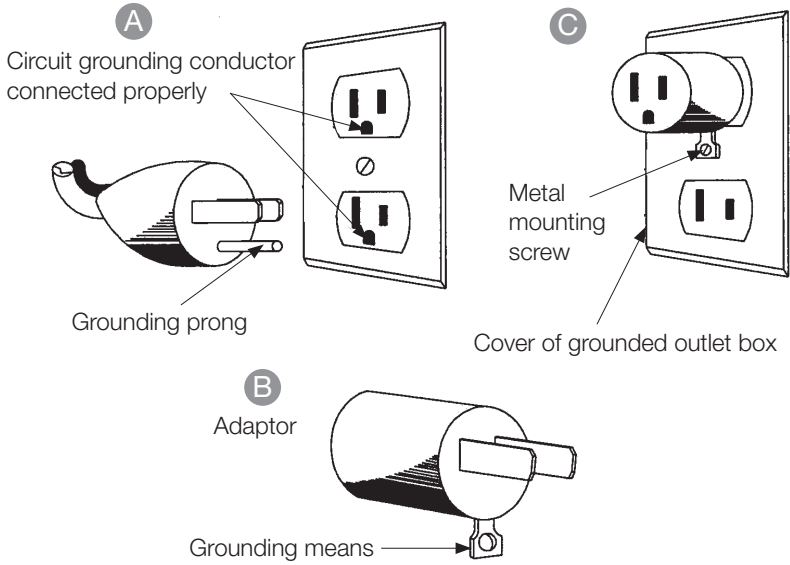
⚠ WARNING **Risk of electric shock!** During cleaning do not immerse the electrical parts of the product in water or other liquids. Never hold the product under running water.

Cleaning

- To clean, wipe with a soft, slightly moist cloth.
- Never use corrosive detergents, wire brushes, abrasive scourers, metal or sharp utensils to clean the product.
- Store in a cool and dry place away from children and pets, ideally in original packaging.
- Avoid any vibrations and shocks.

Grounding Instructions

This appliance must be grounded while in use to protect the operator from electrical shock. The appliance is equipped with a 3-conductor cord and a 3-prong grounding-type plug to fit the proper grounding-type receptacle. The appliance has a plug that looks like sketch A in the figure below. An adaptor, sketch B, should be used for connecting sketch-A plugs to two-prong receptacles. The grounding tab which extends from the adaptor must be connected to a permanent ground such as a properly grounded outlet box as shown in sketch C using a metal screw.



Specifications

Model:	B07SNKGMVP	B07SG689YS
Electrical rating:	125 V~, 60 Hz, 15 A	
Maximum power output:	1875 W	
Voltage protection rating:	600 Joules	
Outlets:	9	12
Protection class:	Class I	
Net weight:	2.54 lbs (1.2 kg)	2.97 lbs (1.35 kg)
Dimensions (W x H x D):	38 x 1.6 x 1.8 in (96.5 x 4.1 x 4.5 cm)	49.2 x 1.6 x 1.8 in (125 x 4.1 x 4.5 cm)

Model:	B07SG68M1N	B07SJ823RC
Electrical rating:	125 V~, 60 Hz, 15 A	
Maximum power output:	1875 W	
Voltage protection rating:	840 Joules	
Outlets:	16	24
Protection class:	Class I	
Net weight:	2.9 lbs (1.3 kg)	3.7 lbs (1.7 kg)
Dimensions (W x H x D):	47.5 x 1.3 x 1.5" (120.6 x 3.4 x 3.9 cm)	65.7 x 1.3 x 1.5" (166.9 x 3.4 x 3.9 cm)

Feedback and Help

Love it? Hate it? Let us know with a customer review.

AmazonBasics is committed to delivering customer-driven products that live up to your high standards. We encourage you to write a review sharing your experiences with the product.



[amazon.com/review/review-your-purchases#](https://www.amazon.com/review/review-your-purchases#)



[amazon.com/gp/help/customer/contact-us](https://www.amazon.com/gp/help/customer/contact-us)

amazonbasics

amazon.com/AmazonBasics

MADE IN CHINA
HECHO EN CHINA
FABRIQUÉ EN CHINE

V1-08/19