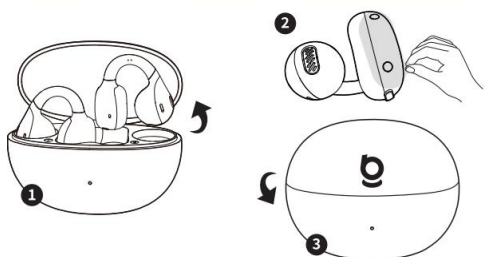


# Bass BC1 Active FAQs

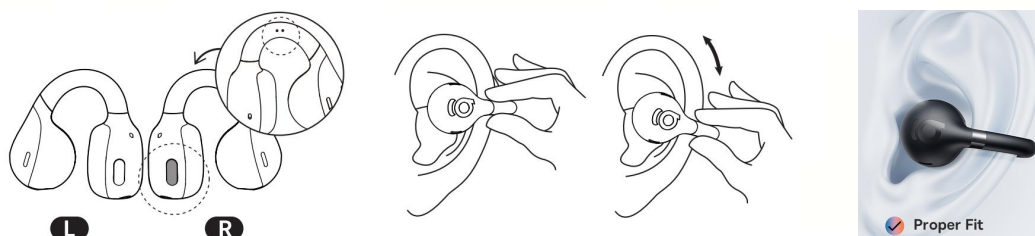
## 1. Connection Guide

- For first-time use**, remove the insulation stickers from the earbuds, place them back into the charging case, then take them out to begin pairing.
- On**: Open the charging case and **remove the earbuds**. They will power on and enter pairing mode automatically.
- Off**: Place the earbuds back in the charging case and close the lid.



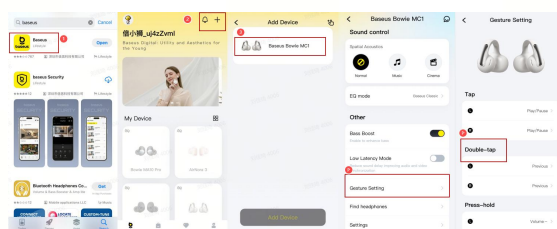
## 2. Wearing Suggestions

- Identify the left (L) and right (R) earbuds by their button color and tactile dots, then place them onto the correct ears.
- The touch buttons on the left ear are of the same color as the main body of the earbuds, while those on the right ear are of different colors from the main body of the earbuds.
- Ensure the open-ring joint of the earbuds is positioned horizontally. Adjust slightly up or down for the best fit and comfort.

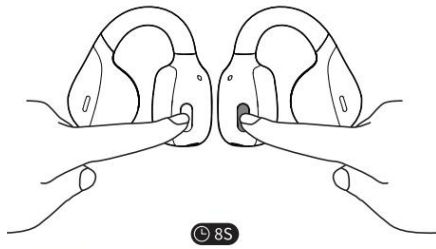


## 3. Precise Button Control

- User-friendly physical buttons, no accidental touches.
- Customize Touch Controls via Official App.

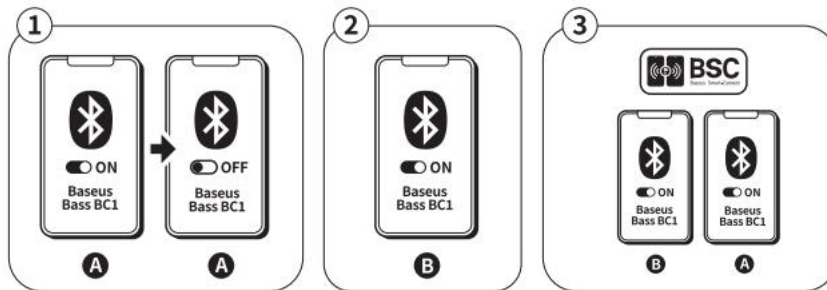


## 4. Factory Reset



- To reset the earbuds, please delete device connection records.
- Remove the insulation stickers from the earbuds.
- Press and hold L and R earbud buttons for approximately 8 seconds. This will reset earbuds and restore custom settings in the App.

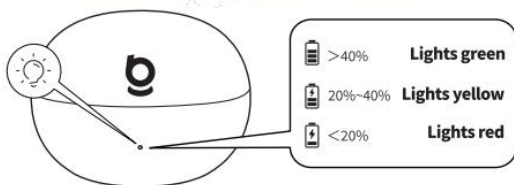
## 5. Multipoint Pairing



- Connect the earbuds to device A. Then, **turn off Bluetooth**.
- Connect to device B.
- Turn Bluetooth on for device A. it will reconnect automatically. Your multipoint connection is now ready.

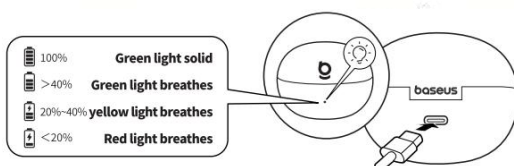
**Note:** The earbuds remember the last connected device. To reset pairing mode, place the earbuds in the charging case, open the lid, and hold the case button for 3 seconds until the indicator light flashes white.

## 6. Battery Indicator



When opening/closing the lid:

- >40%: Lights green.
- 20% to 40%: Lights yellow.
- <20%: Lights red.



When recharging the case:

- 100%: Green light solid.
- >40%: Green light breathes.
- 20% to 40%: Yellow light breathes.
- <20%: Red light breathes.

## 7. Low volume on earbuds

### a. Wearing Adjustment (To ensure optimal fit and audio performance)

- ✓ Align the C-bridge horizontally (parallel to the ground).
- ✓ Rotate the earpiece until the speaker directly faces your ear canal.
- ✓ Gently push the C-bridge upward/downward to match your ear contour.

### b. System-Specific Configuration

- ✓ **For Android Devices**
  - Connect earbuds via Bluetooth and select "Baseus Bass BC1" in settings.
  - Enable "**Sync Bluetooth device volume**".
  - If unavailable, activate "Absolute Volume" in Developer Options.
- ✓ **For iOS Devices**
  - Navigate to Settings → Accessibility → Audio/Visual → Disable "Mono Audio".
  - Go to Settings → Sound & Haptics → earbud Safety → Turn OFF "Reduce Loud Sounds".

### c. Sound Customization via App

- Pair earbuds with your phone via Bluetooth.
- Download "Baseus" App from your app store.
- Tap "+" to add device, then select "EQ Mode" to choose preferred sound profiles.

#### Note:

If the sound is normal at the beginning, but becomes smaller after a period of use. **Please reset after cleaning.**

- ✓ Please check whether there is any **foreign object blocking the earbud outlet**.
- ✓ If there is any foreign object blocking, please use a soft-bristled toothbrush dipped in alcohol to gently brush the foreign object on the mesh cover.
- ✓ Operation precautions: Avoid using excessive force or soaking too much alcohol into the earbud cavity to avoid damaging the internal components of the earbud.

## 8. Download the Baseus App and link it to your earbuds

