

1.Plug and Play for Windows 11/10/8.1 system:

1. But if any issue, you also download and install the driver manually.

2. Or check if the automatic update of Windows system is enabled.

1) Go into computer “Settings”.

2) Click on “Update & Security”.

3)Click “Resume Update” and then plug the Bluetooth adapter again.

2. If your PC has no Bluetooth driver or there is the issue for the Bluetooth driver on Windows11/10/8.1 or your PC is Windows 7 OS system.

Please download & install the driver as the below information:

1) Download the driver from the website <https://bit.ly/4bEHqGb> get the zip file<Rtl5.3 Driver> about 73.8M.



TIPS:

This website is absolutely safe and reliable, please download the driver with confidence.

2) Extract the download zip file <Rtl5.3 Driver> and unzip the file and get the file.



TIPS:

Please note to must extract the file to install it correctly.

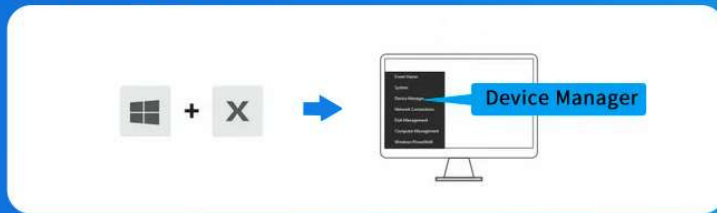
3) Please go into the file < RTBlueR_Windows_1051.1038.1040.0301.2023_F027_L> and find the <Setup> to click it to install the driver directly.

File Name	Modified	Type	Size
0x0408	2022/1/24 15:49	配置设置	27 KB
0x0409	2022/1/24 15:49	配置设置	22 KB
0x0410	2022/1/24 15:49	配置设置	25 KB
0x0411	2022/1/24 15:49	配置设置	15 KB
0x0412	2022/1/24 15:49	配置设置	14 KB
0x0413	2022/1/24 15:49	配置设置	25 KB
0x0414	2022/1/24 15:49	配置设置	24 KB
0x0415	2022/1/24 15:49	配置设置	24 KB
0x0416	2022/1/24 15:49	配置设置	24 KB
0x0418	2022/1/24 15:49	配置设置	25 KB
0x0419	2022/1/24 15:49	配置设置	23 KB
0x0421	2022/1/24 15:49	配置设置	25 KB
0x0424	2022/1/24 15:49	配置设置	24 KB
0x0804	2022/1/24 15:49	配置设置	11 KB
0x0816	2022/1/24 15:49	配置设置	25 KB
BTIsConfig	2022/1/24 15:49	配置设置	5 KB
data1	2023/3/1 14:58	CAB 文件	7,177 KB
data1.hdr	2023/3/1 14:58	HDR 文件	106 KB
data2	2023/3/1 14:58	CAB 文件	61,444 KB
Install	2022/1/24 15:51	Windows 批处理...	1 KB
IsConfig	2023/1/11 16:07	配置设置	3 KB
ISLangUni	2022/1/24 15:51	配置设置	137 KB
ISSetup.dll	2022/1/24 15:51	应用程序扩展	774 KB
layout.bin	2023/3/1 14:58	BIN 文件	2 KB
setup	2023/3/1 17:21	应用程序	1,169 KB
setup	2023/3/1 14:58	配置设置	3 KB
setup.inx	2023/3/1 14:58	INX 文件	343 KB
setup.iss	2022/1/24 15:51	ISS 文件	1 KB
Uninstall	2022/1/24 15:51	Windows 批处理...	1 KB
Uninstall.iss	2022/1/24 15:51	ISS 文件	1 KB

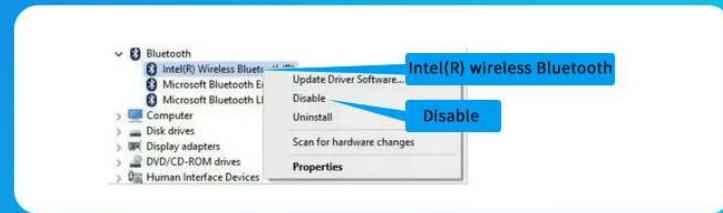
3. Before you start using this adapter, disable all existing Bluetooth devices (Both Built-in and the external) from the PC “Device Manager” on Windows as the below steps:

How to Disable the PC's Built-in Bluetooth Device?

Step1: Right Click "This PC" or Press "Win+X" > "Manage" > "Device Manager"



Step2: Right Click "Intel(R) Wireless Bluetooth" (Your PC's built-in Bluetooth device) > "Disable"



Step3: Please replug the Adapter



Step4: Warm Tips:

Current supports OS including Windows 11/10/8.1/7 or Some Linux OS

Warm Tips:

*Doesn't work with any Mac OS, Windows 8/XP/Vista.

*Doesn't work with any TV and game console kit or Car Stereo.

*Doesn't work with ordinary 2.4Ghz Non-Bluetooth Keyboard and mouse.



4. Notes:

If don't know how to disable or what device that should be disabled, please feel free to contact us anytime via **Mail-Box: amzvip2020@hotmail.com**