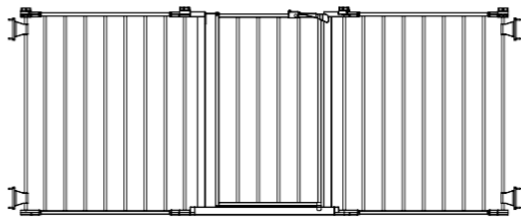




Flexi Extra Wide Safety Gate
Barrière de Sécurité Flexi Extra Large
Reja de Seguridad Flexi Extra Ancha

Model / Modèle / Modelo: 1175



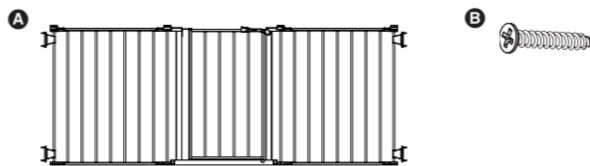
- READ ALL INSTRUCTIONS BEFORE ASSEMBLY AND USE OF GATE. KEEP INSTRUCTIONS FOR FUTURE USE.
- LIRE TOUTES LES INSTRUCTIONS AVANT D'ASSEMBLER ET D'UTILISER LA BARRIÈRE. CONSERVER CES INSTRUCTIONS POUR UNE UTILISATION ULTÉRIEURE.
- LEA TODAS LAS INSTRUCCIONES ANTES DE MONTAR Y USAR LA REJA. GUÁRDELAS PARA UTILIZARLAS COMO REFERENCIA.

www.regalo-baby.com

Regalo International, LLC.
 3200 Corporate Center Drive, Suite 100 / Burnsville, MN 55306, USA / É.-U. / EE. UU.
 866.272.5274 (U.S. only / aux États-Unis seulement / solo en EE. UU.) or / ou / o 952.435.1080
 Made in China / Fabriqué en Chine / Hecha en China

Before Assembly

English



PLEASE CHECK TO MAKE SURE YOU HAVE THE FOLLOWING PARTS:

- A** Folded Gate Frame and attached Wall Mounting Assembly (1)
- B** Wall Mounting Screws (8)

BEFORE USING PRODUCT

Read and follow all instructions carefully to ensure that your gate and extensions are properly installed. Improper installation could result in the gate becoming unstable or dislodged from the doorway. Always make sure the extension is securely attached to the gate before using. The safety of your child is your responsibility. Please keep these instructions for your reference.

IMPORTANT

- The four mounting brackets must be used in securing the gate to the wall. These brackets prevent the gate from dislodging from its opening and becoming unstable.
- If hardware mounting to a surface other than drywall or wood, please consult with a professional about installation.
- The minimum width of this gate is 28" inches.
- The maximum width of this gate is 76" inches.
- The height of this gate is 31" inches.

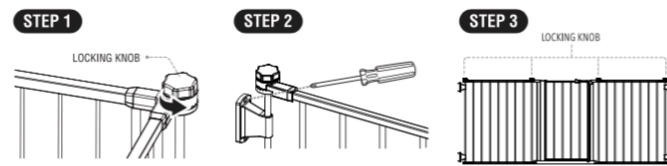
CARE AND MAINTENANCE

Periodically check the gate for signs of damage, wear, or missing components. Do not use if any part is missing, worn or damaged. Check the gate regularly to ensure all the hardware and mountings are tightened. Do not use abrasive cleaners or bleach. Clean by sponging with warm water and a mild detergent.

90 DAYS LIMITED WARRANTY

If, during the first 90 days after consumer purchase of the item, under reasonable and non-commercial use and conditions of maintenance, it fails while owned by the original purchaser because of the quality of materials or workmanship of finish and assembly, Regalo International, LLC, will replace or repair it at Regalo's option. **PROOF OF PURCHASE REQUIRED.**

Assembling and Installing Your Gate

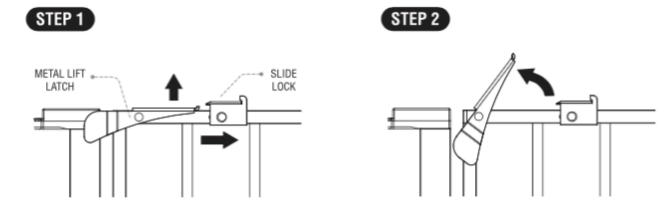


STEP 1
 UNFOLD THE GATE FRAME BY TURNING THE LOCKING KNOBS COUNTER CLOCKWISE AT EACH PIVOTING JOINT. LOOSEN THE KNOBS ENOUGH TO ALLOW THE GATE TO SWING OPEN FREELY WITHOUT FULLY REMOVING THE KNOBS.

STEP 2
 USE A PHILLIPS/CROSSHEAD SCREWDRIVER TO FIX THE WALL MOUNTING BRACKET TO THE WALL. REPEAT FOR ALL FOUR BRACKETS.

STEP 3
 ARRANGE THE PANELS TO YOUR DESIRED CONFIGURATION, THEN TIGHTEN ALL OF THE LOCKING KNOBS.

Operating the Door Latch



STEP 1
 PULL BOTH SIDES OF THE SLIDE LOCK SIDWAYS AWAY FROM THE METAL LIFT LATCH WHILE SIMULTANEOUSLY PIVOTING THE METAL LIFT LATCH UPWARD FROM THE GATE'S DOOR FRAME.

STEP 2
 TO RELock THE GATE, CLOSE THE DOOR COMPLETELY AND DROP THE METAL LIFT LATCH BACK INTO PLACE. THE SLIDE LOCK WILL RETURN TO ITS LOCKED POSITION ON ITS OWN.