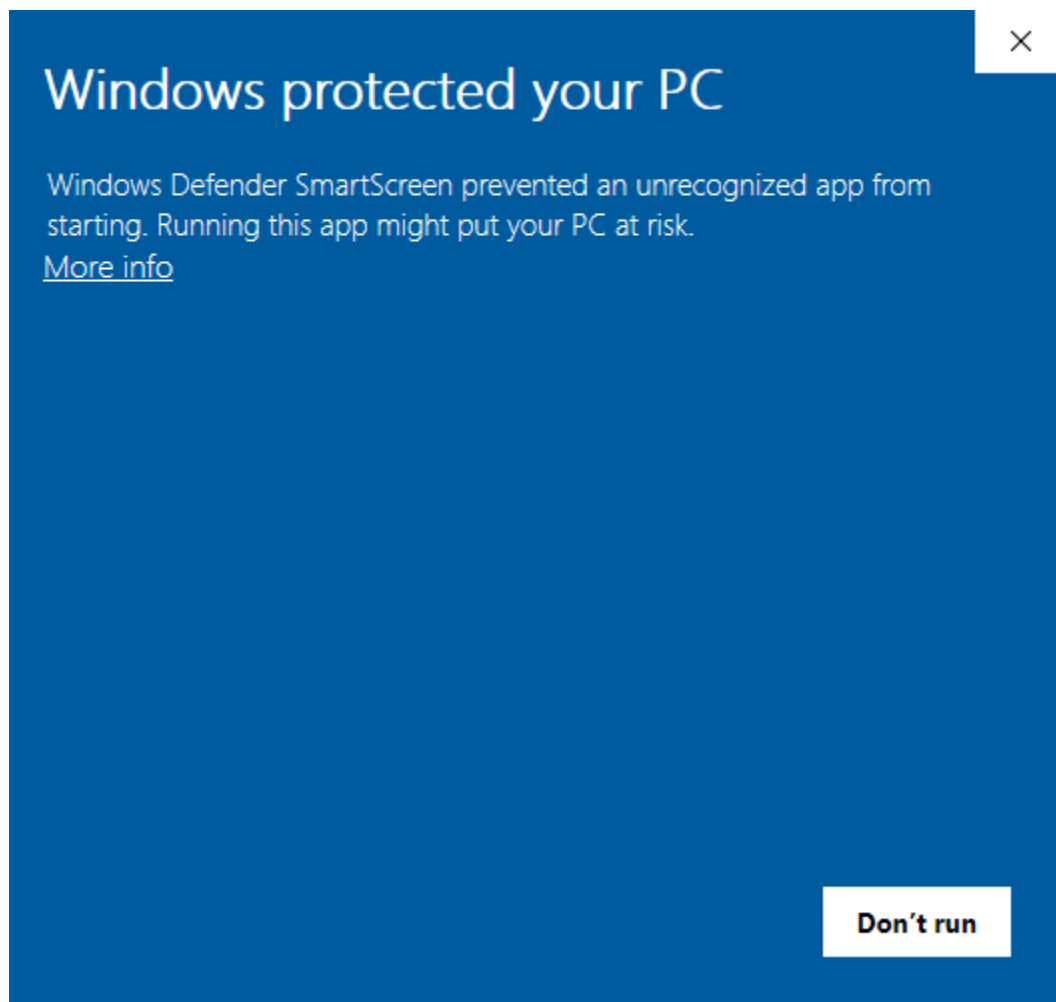
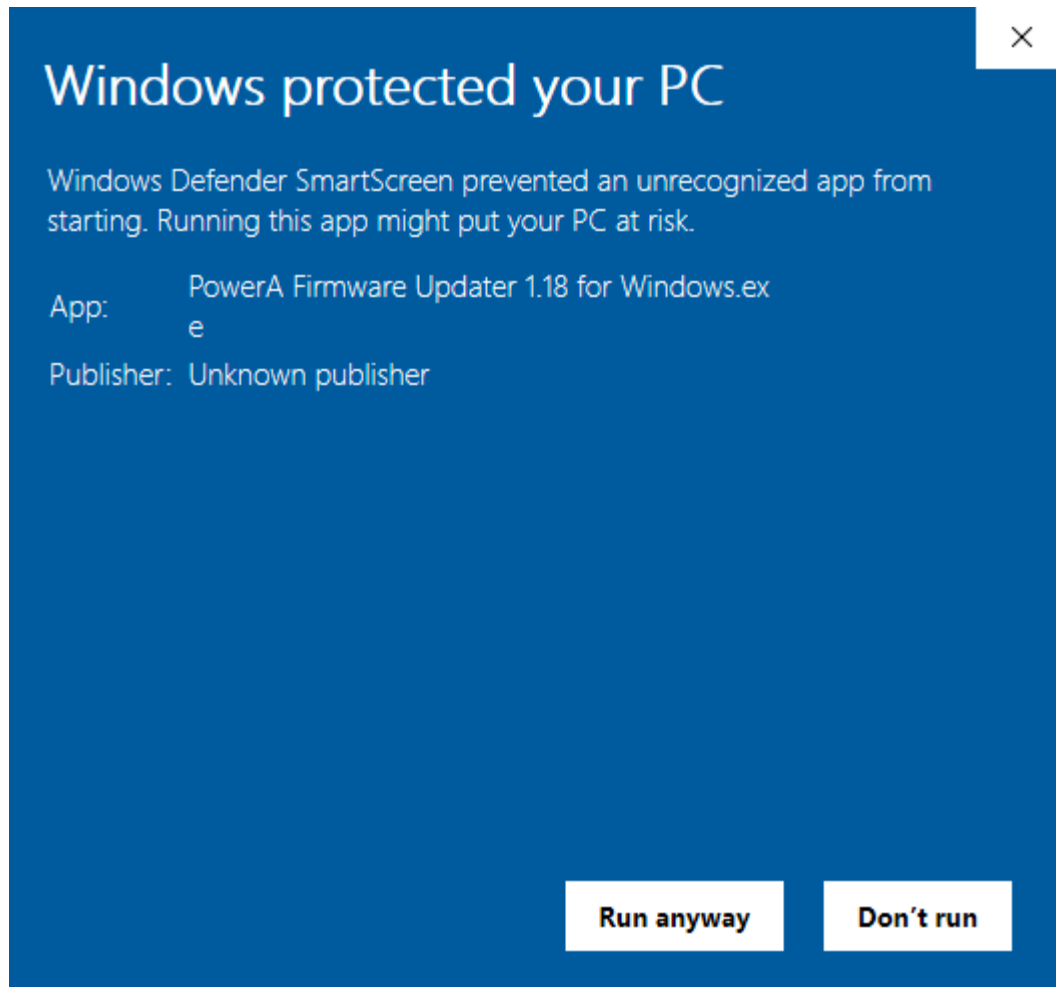


Please follow the below steps to update the firmware on your FUSION Pro Controller

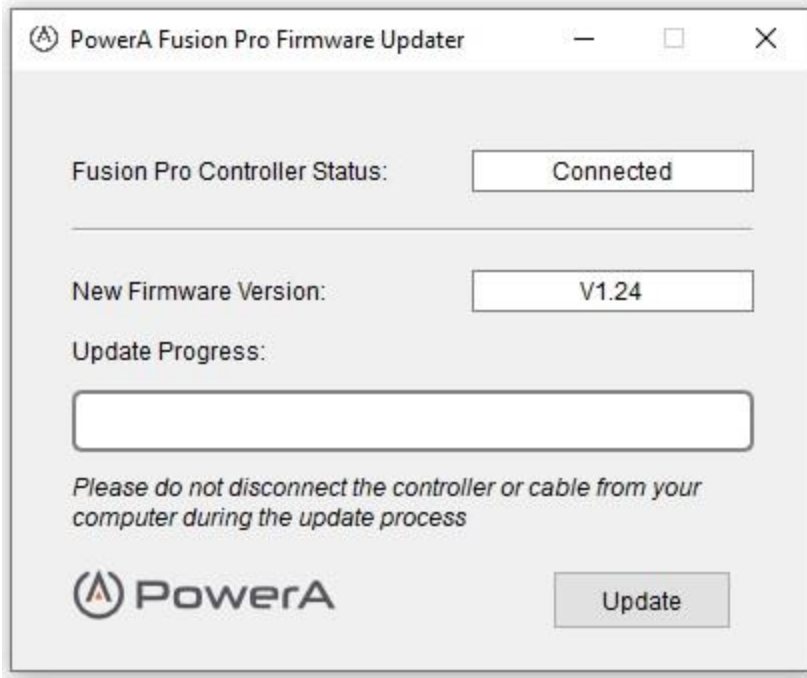
**Step One. Firmware Download & Installation for Windows PC**

1. Click [here](#) to download the firmware updater for Windows 10
2. Run the **Fusion\_Pro\_Update\_v124\_PC.exe** application and follow the directions below
3. Connect the Fusion controller to any open USB port on your PC
  1. If this is your first time connecting your controller to your PC, you may get a Windows device set-up notification - this is normal. Let the device finish the automatic set-up process before proceeding to the next step.
  2. If you receive the below notification, click on “More info”, then click on “Run Anyway”

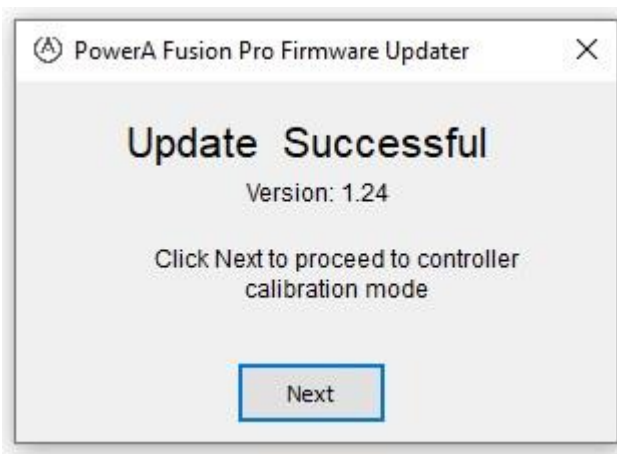




4. The below updater window will appear. Click on “Update” to begin the update process



5. Once complete, you will see an 'Update Successful' notification to alert you that the firmware upgrade was successful



6. You may now proceed to step 2 to perform required calibration sequence

1. If the update was unsuccessful, please disconnect the controller and repeat steps 3 – 5 above

## Step 2. Controller Calibration

After successfully updating the controller firmware, calibration is required to ensure optimal accuracy and responsiveness. Please CAREFULLY review and follow the below sequence:

- 1) Unplug the USB cable from the Windows PC (leave the cable plugged into the FUSION Pro controller)
- 2) Ensure both trigger locks are set to the T3 position



- 3) Press and hold the Nexus, Menu, and View buttons simultaneously. While holding the three buttons down, connect the USB cable back into the USB port of the Windows PC



- 4) Once plugged in, the LED under the Nexus button will flash rapidly indicating the controller has successfully entered calibration mode. You may now release the three buttons
- 5) Rotate both analog sticks clockwise for three (3) complete rotations
- 6) Press both triggers simultaneously to the max distance and release three (3) times



7) Press the "D-PAD Down" and "Y" button simultaneously to save settings and exit the calibrate mode

8) Calibration is now complete

a. If calibration is unsuccessful, please repeat steps 1-7 above

If either of the steps above are unsuccessful after multiple attempts, please open a support ticket [here](#).

---

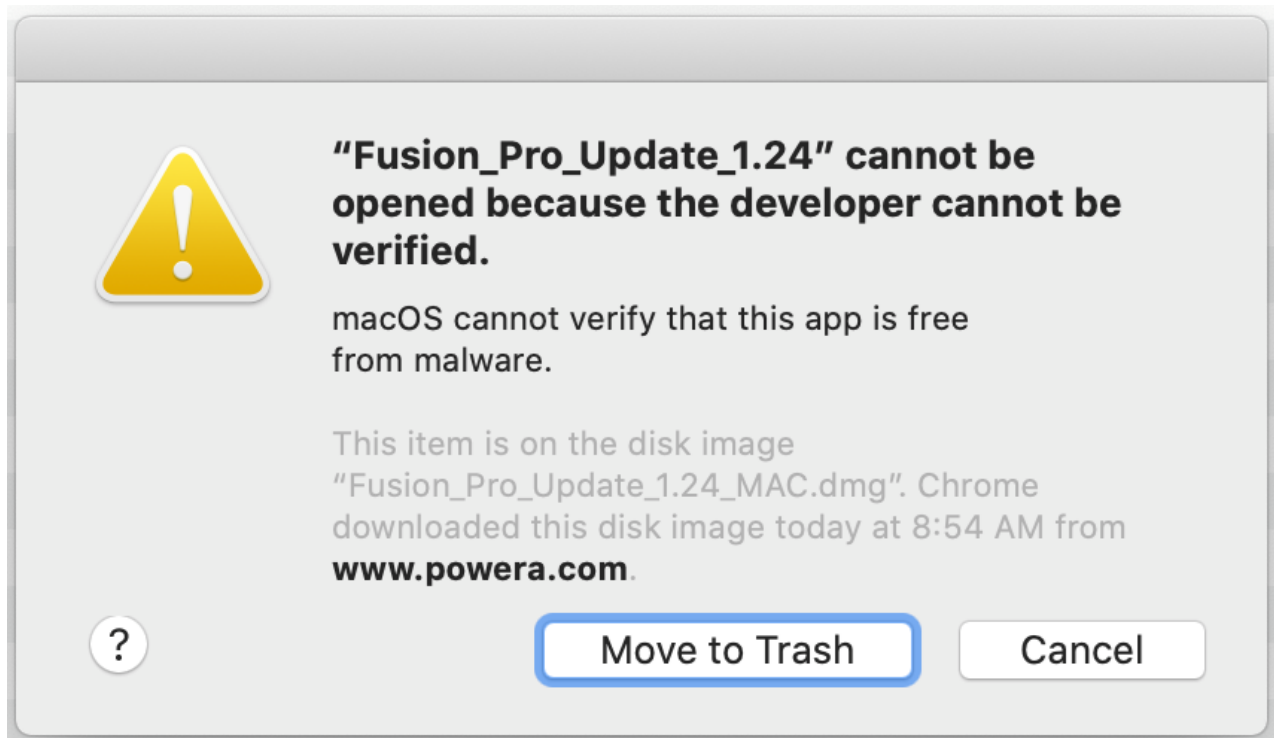
**Please follow the below steps to update the firmware on your FUSION Pro Controller:**

**Step One. Firmware Download & Installation for Mac**

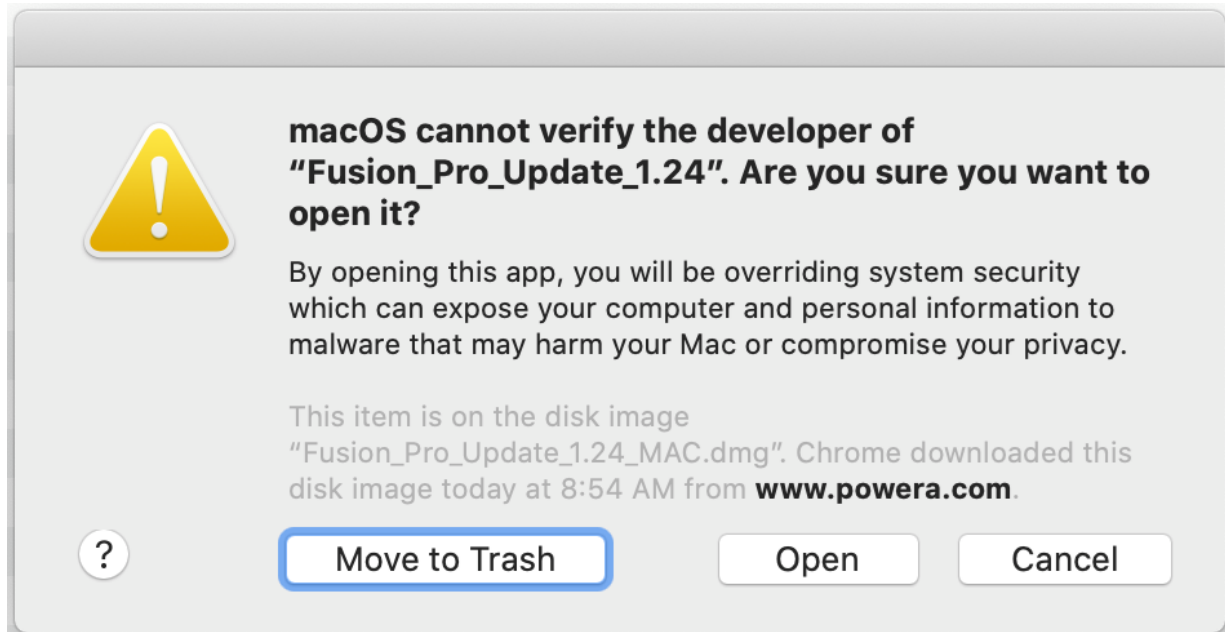
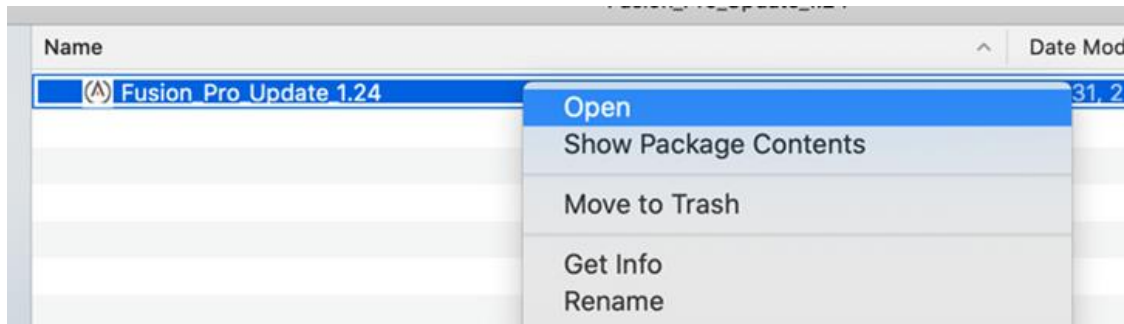
1) Click [here](#) to download the firmware updater for Mac

2) Run the **FUSION Pro\_Update\_v1.24\_MAC.dmg** application and follow the directions below

1. Depending on your security settings, you will likely see this prompt when opening the app for the first time:



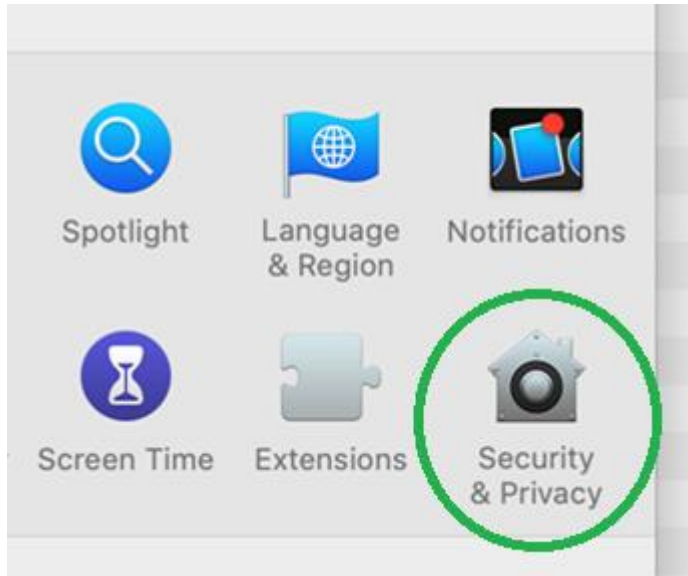
2. If you "right-click" on the downloaded software's icon and select "Open", you should see the following:



3. Select "Open" to open the Firmware Updater app

4. If this does not work, you may need to open System Preferences (by clicking on the Apple icon in top left corner of your screen), and navigate to the "Security & Privacy" section in order to proceed



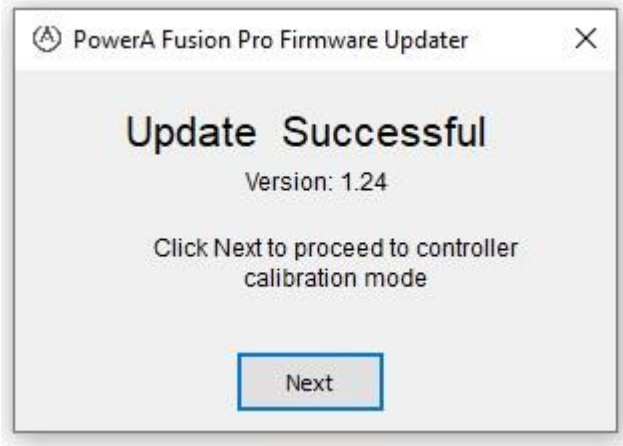


3) Connect the Fusion controller to any open USB port on your computer

4) The below updater window will appear. Click on “Update” to begin the update process



5) Once complete, you will see an ‘Update Successful’ notification to alert you that the firmware upgrade was successful



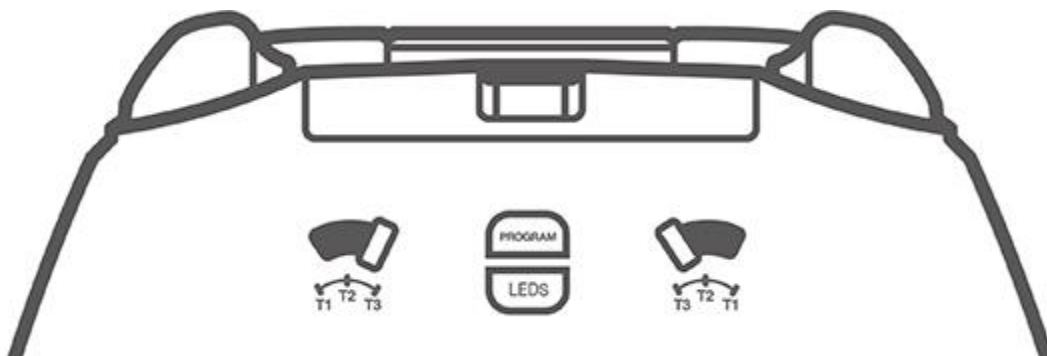
6) You may now proceed to step 2 to perform required calibration sequence

1. If the update was unsuccessful, please disconnect the controller and repeat steps 3 – 5 above

## Step 2. Controller Calibration

After successfully updating the controller firmware, calibration is required to ensure optimal accuracy and responsiveness. Please CAREFULLY follow the below sequence:

- 1) Unplug the USB cable from the computer (leave the cable plugged into the FUSION Pro controller)
- 2) Ensure both trigger locks are set to the T3 position



- 3) Press and hold the Nexus, Menu, and View buttons simultaneously. While holding the three buttons down, connect the USB cable back into the USB port of the Windows PC



4) Once plugged in, the LED under the Nexus button will flash rapidly indicating the controller has successfully entered calibration mode. You may now release the three buttons

5) Rotate both analog sticks clockwise for three (3) complete rotations

6) Press both triggers simultaneously to the max distance and release three (3) times



7) Press the "D-PAD Down" and "Y" button simultaneously to save settings and exit the calibrate mode

8) Calibration is now complete

a. If calibration is unsuccessful, please repeat steps 1-7 above

If either of the steps above are unsuccessful after multiple attempts, please open a support ticket [here](#).