

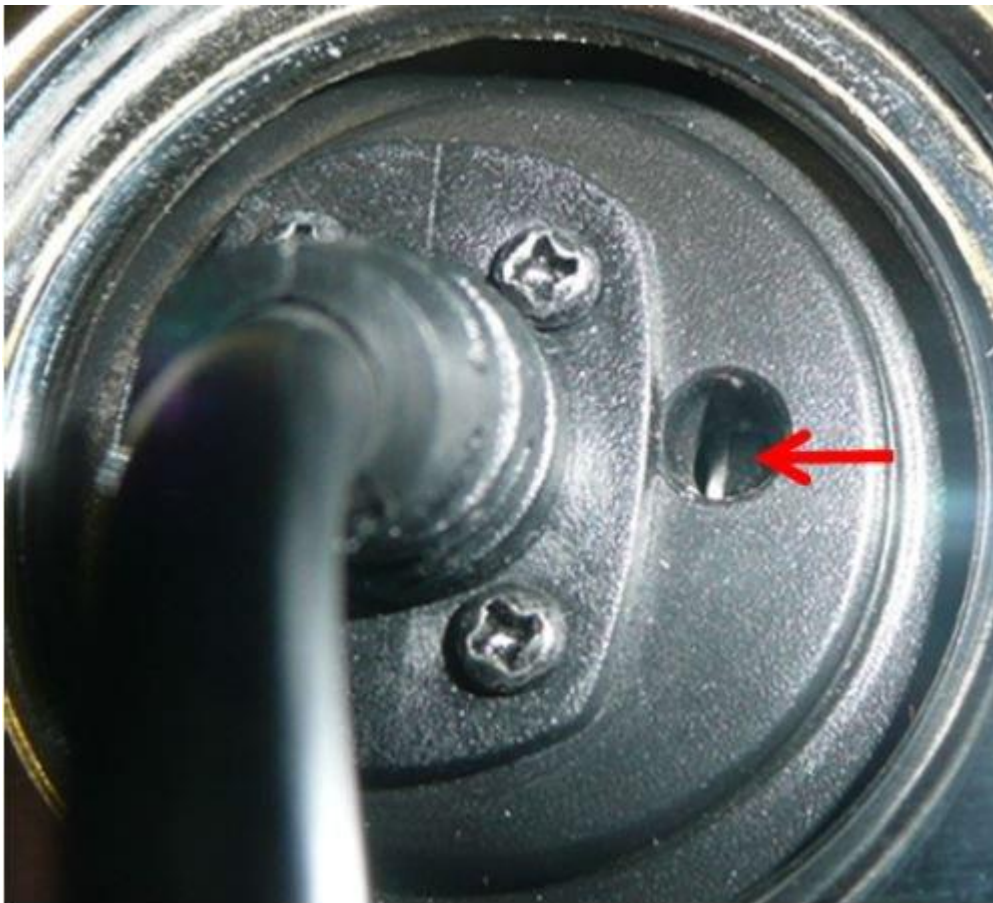
If your TH8 Shifter (TH8A/TH8 RS) is no longer detected/recognized by the PC/console, follow the instructions available below in order to connect it in Bootloader mode to a PC (a computer with Windows):

1. Install the latest drivers available on the shifter's page, on our Technical Support website:

TH8 RS: <https://support.thrustmaster.com/en/product/th8rs-en/>

TH8A: <https://support.thrustmaster.com/en/product/th8a-en/>

2. Under the TH8 Shifter, just next to the USB cable, there is a small hole giving access to a small rectangular black button:



3. Press (and hold pressed) this button with a small screwdriver (you must hear a small “click” noise)



4. Now plug the USB cable directly into one of the USB ports available on your computer (**while still holding the button pressed with the screwdriver**) - do not use any USB extenders/USB hubs

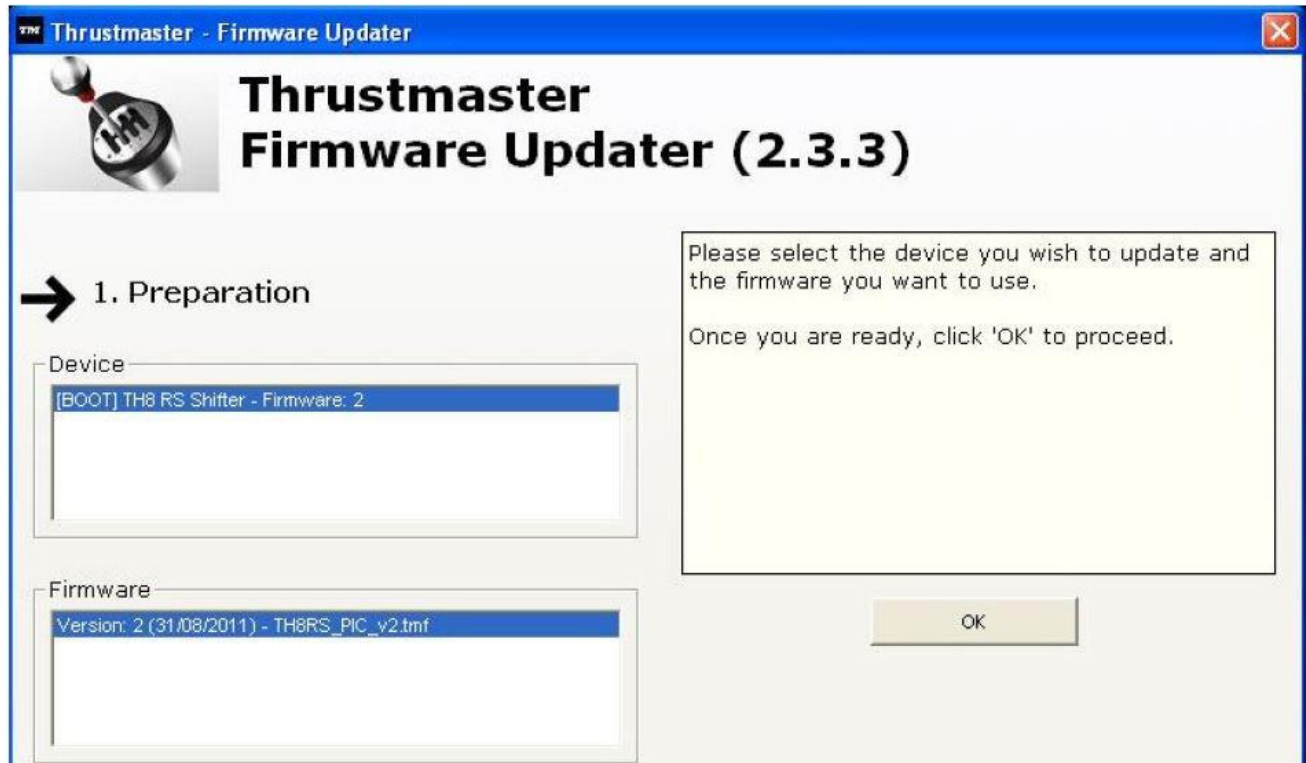
5. As soon as the USB cable is plugged, you can release the button (At this step, Windows will not detect the shifter in the "Game Controllers panel"- this is completely normal)

6. Launch the "Thrustmaster Firmware Updater" (Start/ All Programs/ Thrustmaster/ TH8 RS/ Firmware Updater).

7. If in the "Device" tab the "**[BOOT] TH8 RS Shifter – Firmware: 2**" / "**[BOOT] TH8A Shifter – Firmware: 26**" text appears, then click on "OK" in order to update the Firmware.

Once the message saying that the update has been successful appears, you can close the window by clicking on "X".

The problem should now be solved.



However, if the shifter is not detected in the "Firmware Updater" window or if the update fails, perform this procedure several more times with different USB ports.

In case the fault persists, please contact our Technical Support Department.
