

Welcome to Western Digital Support

Search Support

Home > Support

Western Digital Dashboard: Install & Use

Important:
The Western Digital Dashboard is not compatible with macOS.
Please refer to [Answer ID 14800: How to Check if a Drive has Errors or Failed on macOS](#)

Topic	Instructions
About Western Digital Dashboard	Click here for Instructions
Frequently Asked Questions	Click here for Instructions
Download & Install	Click here for Instructions
Drive Not Detected	Click here for Instructions
Drive S.M.A.R.T. Test	Click here for Instructions
Dashboard Error Codes	Click here for Instructions
WD_BLACK 3rd Party RGB Software Expectations	Click here for Instructions
Warranty & Data Recovery	Click here for Instructions

[Skip to main content](#)



Download & Install Western Digital Dashboard

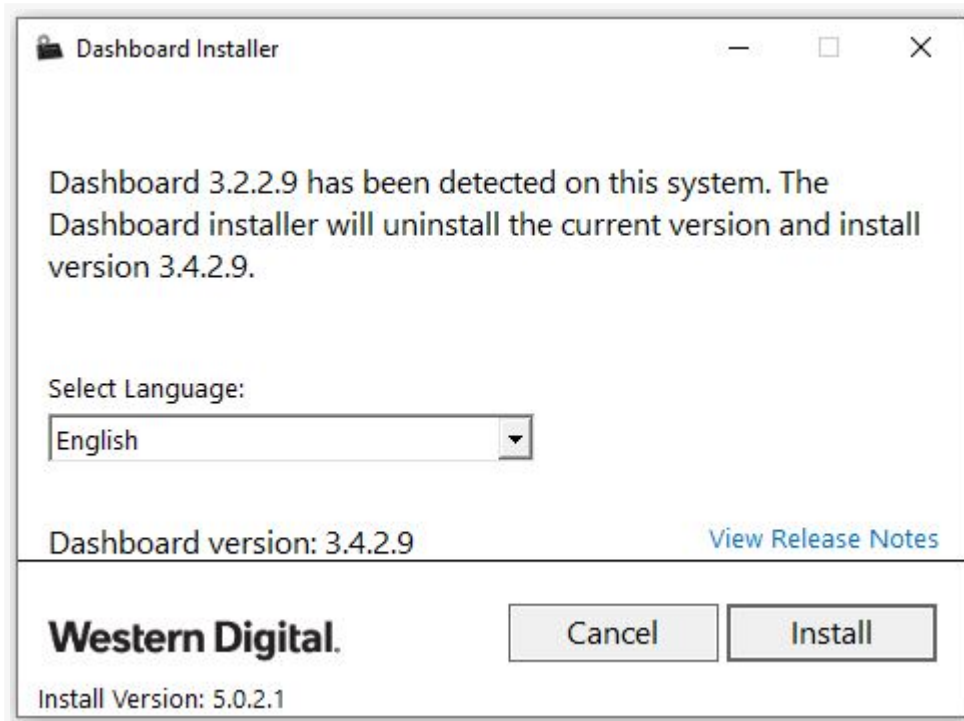
1. [Click Here](#) to access and download the Western Digital Dashboard.
2. Save the **DashboardSetup.exe** file to your computer.
Locate where the file was saved and install by double clicking DashboardSetup.exe file.



3. Follow the screen prompts to complete the installation.

- **Existing Installation:**

Click "**Install**" to upgrade an existing installation on the computer.

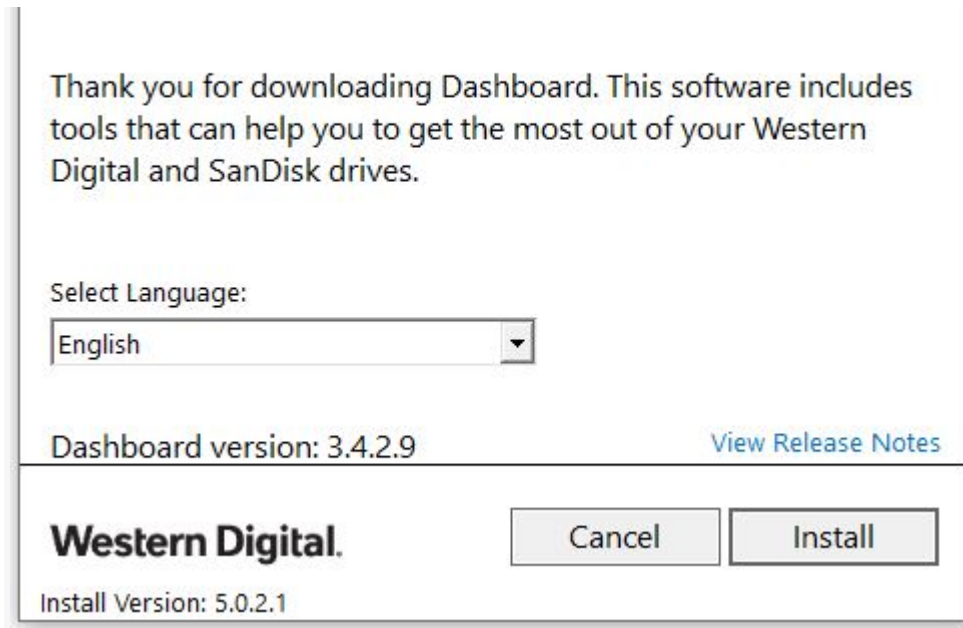


- **New Installation:**

Click "**Install**" to install on the computer.

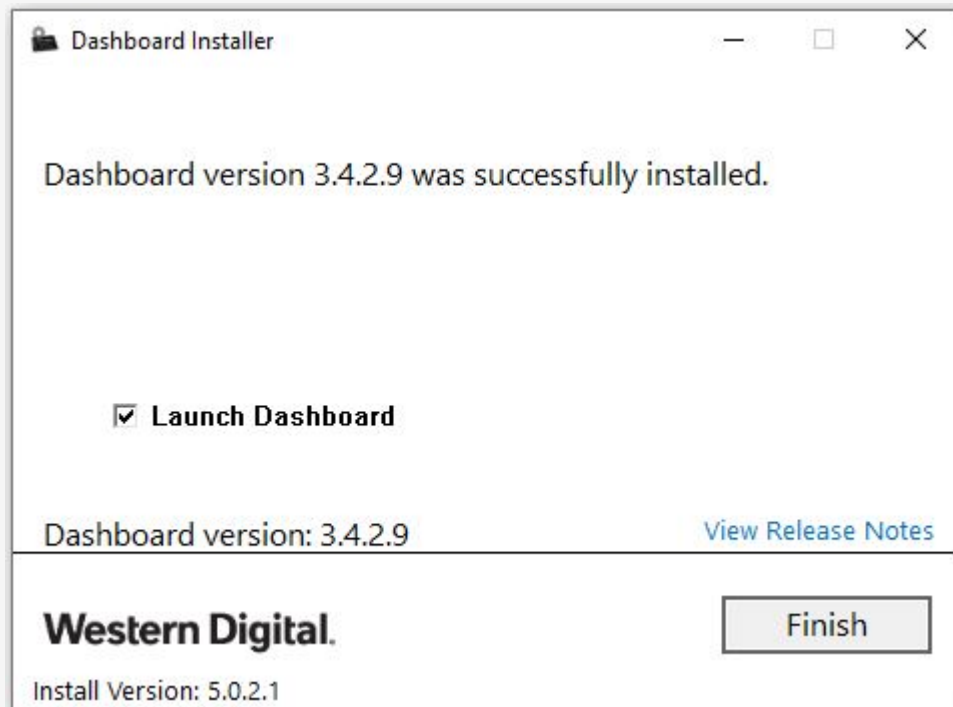
[Skip to main content](#)



Western Digital.

4. Click "**Finish**" after the installation has completed.

The Western Digital Dashboard will automatically start and display the status section.



[Skip to main content](#)





5. Attach a supported external drive.

Supported Products

- **Retail Internal Drives:** SanDisk, WD_BLACK, WD HDD & SSD (Black, Blue, Green, Red, Purple, Gold)
- **Retail External Drives:** WD_BLACK P10, D10, D50 Game Dock
- **Other Drives:** Other internal and external drives may appear in the Western Digital Dashboard but are not supported.

[Return to Top](#)

Details

Answer ID 31759

Published 07/28/2021 12:26 PM

[Skip to main content](#)

Western Digital.

Related Answers

[Western Digital Dashboard: Frequently Asked Questions \(FAQ\)](#)[Windows & macOS: Check Drive for Errors or Failure](#)[My Cloud Home: Not Detected, Not Found, Cannot Connect or Device Offline](#)[My Cloud Home: Desktop App Sharing](#)[My Cloud OS 5: Share Files and Directory Content](#)

Please rate the helpfulness of this answer

Yes

No

[Privacy](#) [Legal](#) [Cookie Statement](#) [About Ads](#) [Trademarks](#) [Terms of Sale](#) [Taiwan BSMI](#)

[Do Not Sell My Personal Information](#) [Cookie Preferences](#)

© 2021 Western Digital Corporation or its affiliates. All rights reserved.

