

S2 USER MANUAL

BENUTZERHANDBUCH

MANUAL DE USUARIO

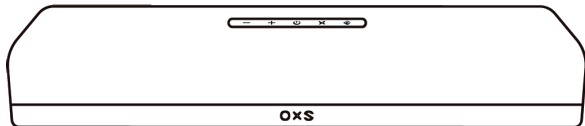
РУКОВОДСТВО ПОЛЬЗОВАТЕЛЯ

使用手冊

使用手冊

ユーザーマニュアル

사용설명서



Thank you for purchasing this OXS product.

To receive more complete service, please follow us at www.oxsaudio.com

If you have any question, please contact us at: service@oxsaudio.com

ABOUT THIS MANUAL

The user manual has two parts: this simple paper USER MANUAL and a detailed FULL MANUAL you can download.

USER MANUAL

See this manual for product installation, components and connections.

FULL MANUAL

You can access the FULL MANUAL or download it in document format from OXS's website. (<http://www.oxsaudio.com/support>)

| |
|---|
| Design and specifications are subject to change without prior notice. |
|---|

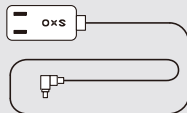
CONTENTS

| | |
|--|--------|
| What's inside | ENG-5 |
| Device layout | ENG-6 |
| Remote | ENG-7 |
| How to use | ENG-8 |
| Setting up your soundbar | ENG-8 |
| Positioning | ENG-8 |
| Power on | ENG-8 |
| Connecting to an audio source | ENG-9 |
| Connecting via HDMI cable | ENG-9 |
| Connecting via the optical cable | ENG-9 |
| Connecting via the analog cable | ENG-9 |
| Connecting via Bluetooth | ENG-10 |
| Setting the speaker as the default device with USB-C input | ENG-11 |
| For Windows PC users | ENG-11 |
| For MAC users | ENG-11 |
| Changing the input source | ENG-12 |

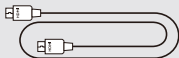
WHAT'S INSIDE



Speaker



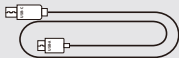
Power cord



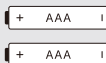
HDMI cable



Optical fiber line



USB-C to A cable

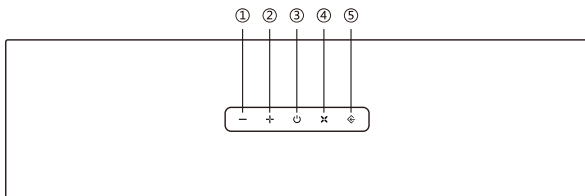


AAA Batteries

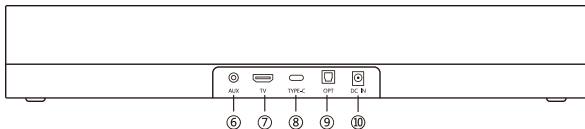


Remote control

DEVICE LAYOUT



| | |
|--------------------|--|
| ① Volume down | Short press: Volume down Press & hold: Volume goes down continuously |
| ② Volume up | Short press: Volume up Press & hold: Volume goes up continuously |
| ③ Power | Short press: Power on, standby, or off LED indicates: Orange = on / Dimmed Orange = standby |
| ④ Virtual surround | Short press: Activates the virtual surround sound effect LED indicates: Orange = on |
| ⑤ Input selector | Toggles between the 5 types of input: TV -> OPT -> AUX -> BT -> USB C |



⑥ AUX (3.5mm jack)

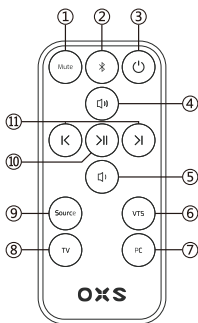
⑦ TV (ARC)

⑧ Type-C

⑨ Optical

⑩ Power (DC-IN)

REMOTE

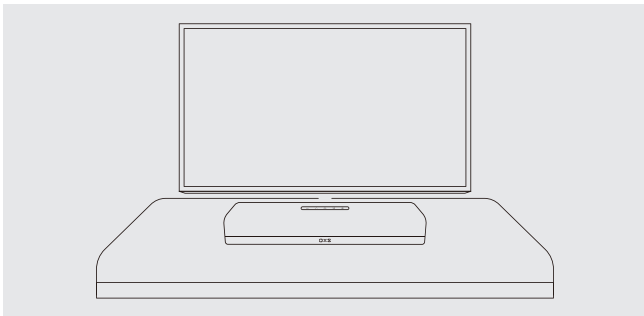


| | |
|--------------------|---|
| ① Mute/unmute | Mutes / unmutes the sound bar |
| ② Bluetooth | Bluetooth mode / Bluetooth pairing |
| ③ Power | Turn on, off, or standby the soundbar. Auto Standby will shut down the soundbar in the following cases: - No audio signal input for 15 minutes in AUX /OPT/ HDMI/BT mode - Press the power button in standby mode to power on the speaker. |
| ④ Volume up | Short press: Volume up |
| ⑤ Volume down | Short press: Volume down |
| ⑥ Virtual surround | Orange = on |
| ⑦ PC | Switch to the Type-C input |
| ⑧ TV | Switch to the TV input |
| ⑨ Input selector | Toggles between the 5 types of input: HDMI -> OPT -> AUX -> BT -> Type-C |
| ⑩ Play/Pause | Play/pause the music file |
| ⑪ Pre/Next | Select the previous or next music file |

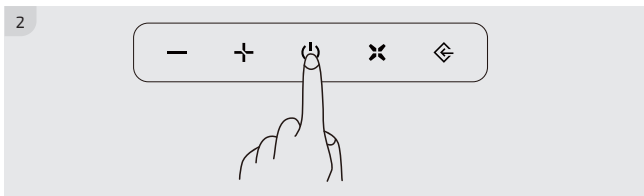
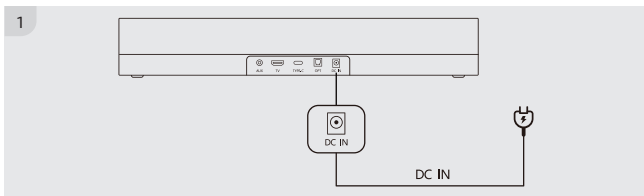
HOW TO USE

SETTING UP YOUR SOUNDBAR

Positioning

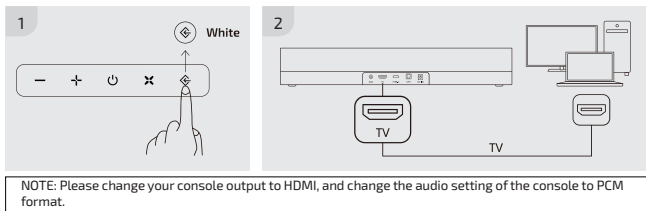


Power on

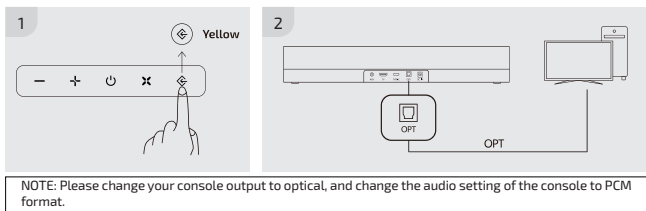


CONNECTING TO AN AUDIO SOURCE

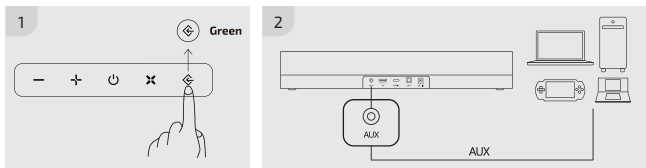
Connecting via HDMI cable



Connecting via the optical cable



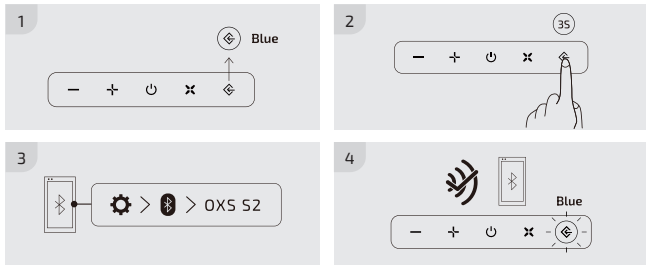
Connecting via the analog cable



Connecting via Bluetooth

Check before connection

- Only one device can be connected at a time.
- You can connect to a Bluetooth-enabled Computer.
- Make sure the device you need to connect is close to the soundbar within a 10m range.
- Enter <0000> if a PIN code is required during the connection.



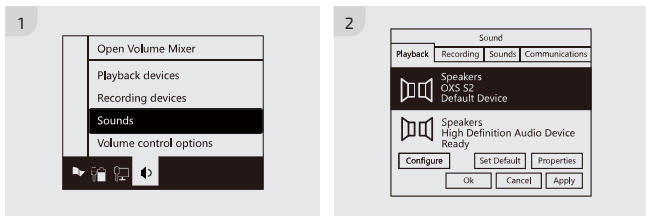
| Modes | Description | How to activate* | LED behavior |
|-------------|--|--|----------------------------------|
| Pairing | Pairing with new devices | Hold and press the input selector button on the top of the soundbar or on the remote control for 3 seconds | Flashing blue |
| Connectable | Ready to connect to the last paired device. Turn on Bluetooth on your device and select OXS S2 to connect. | Automatically activated when the soundbar is not connected | Flashing blue |
| Connected | When a device is connected to the sound bar via Bluetooth | Automatically activated when a device is successfully paired | Solid blue |
| Disconnect | To disconnect your device from the soundbar | Hold and press the input selector button on the top of the soundbar or on the remote control. - Disconnection takes some time because the TV must receive a response from the soundbar. The time varies on the model. | From solid blue to flashing blue |

*All these actions must be done when the input selector is set to Bluetooth mode (LED: blue).

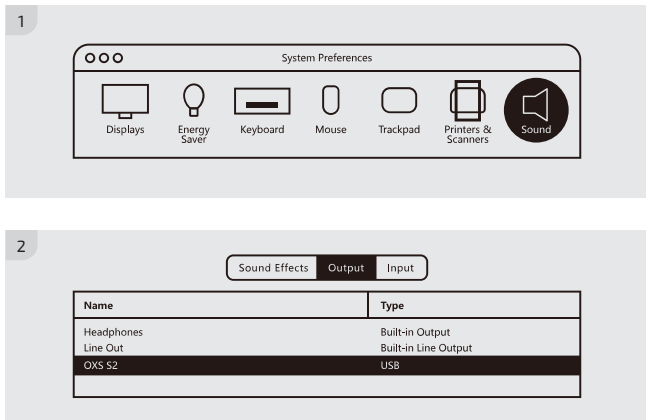
Setting the speaker as the default device with USB-C input

If you are using the S2 for the first time, you may be required to set up the device as your system's default playback device.

For Windows PC users



For MAC users



CHANGING THE INPUT SOURCE



| Input Source | LED Indicates |
|--------------|---------------|
| TV ARC | White |
| OPT | Yellow |
| AUX | Green |
| Bluetooth | Blue |
| USB-C | Purple |