

**Nuby**<sup>™</sup>

**RAPIDCOOL**<sup>™</sup>  
PERFECT PREPARATION



**Instructions**

## RAPIDCOOL™ PERFECT PREPARATION

2 x White RapidCool™ Flask

1 x Large Milk Powder Dispenser

2 x Small Milk Powder Dispensers

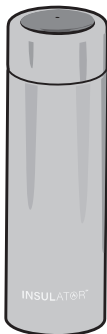
1 x Grey Insulated Flask

1 x Lid Cleaning Brush

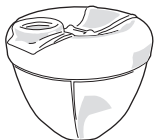
1 x Cotton Bib



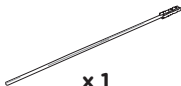
x 2



x 1



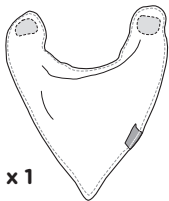
x 1



x 1



x 2

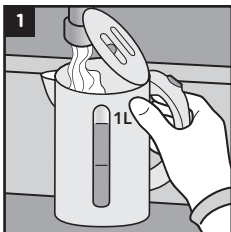


x 1

## TABLE OF CONTENTS

<b>RAPIDCOOL™ PERFECT PREPARATION</b>	<b>2-11</b>
RAPIDCOOL™ PERFECT PREPARATION	02
PREPARATION	04
MAKING THE FEED	05-06
INSULATED FLASK - OUT & ABOUT	07
DIGITAL LID	07
COOLING TIMES	07
RAPIDCOOL™ FLASK RESET TIMES	08
CLEANING	09
STORAGE	10
WARNING!	10
END OF LIFE	10
NHS GUIDELINES	11
PRODUCT WARRANTY	12

## PREPARATION



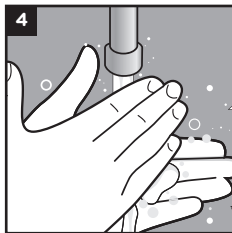
**1.** Fill the kettle with at least 1 litre of fresh tap water (do not use water that has been boiled before).

**2.** Boil the water. **Boiled water should be used immediately.** Take care when handling freshly boiled water.



**3.** Clean and disinfect the surface you are going to use.

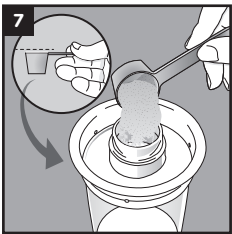
**5.** If you are using a cold-water steriliser, shake off any excess solution from the RapidCool™ Flask, bottle and the teat, or rinse them with cooled boiled water from the kettle (not tap water).



**4.** It's important that you wash your hands.

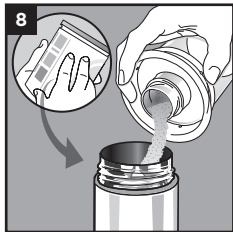
**6.** Stand the RapidCool™ Flask on the cleaned, disinfected surface.

## MAKING THE FEED



7. Loosely fill the scoop with formula powder, according to the manufacturer's instructions, then level it using either the flat edge of a clean, dry knife or the leveller provided. Different tins of formula come with different scoops. Make sure you only use the scoop that comes with the formula. Empty each levelled scoop into the milk powder dispenser provided.

8. Follow the formula manufacturer's instructions and pour the amount of boiling water you need into the RapidCool™ Flask. Double check that the water level is correct. Always put water in the RapidCool™ Flask first, while it is still hot, before adding the powdered formula. **Immediately** add milk formula from milk powder dispenser.

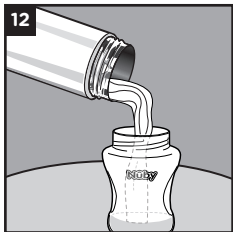


9. Screw the digital lid onto the RapidCool™ Flask, ensuring it is fully tightened.

10. Shake the RapidCool™ Flask well to ensure formula powder is fully dissolved.

11. To check if feed is ready to dispense into a baby bottle, tilt the RapidCool™ Flask sideways. The lid will show a green Nuby logo when the feed is ready.

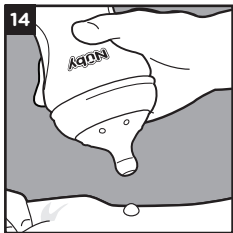




**12.** When Nuby logo glows green, empty contents of the RapidCool™ Flask into a clean, sterile bottle.



**13.** Fit teat into retaining ring, taking care to avoid unnecessary contact with teat nipple, and screw retaining ring onto the bottle base.



**14.** Test the temperature of the formula on the inside of your wrist before giving it to your baby. It should be body temperature, which means it should feel warm or cool, but not hot.

**15.** If there is any made-up formula left in the bottle after a feed, throw it away.

**16.** Clean all parts thoroughly and sterilise immediately after feeding.

## INSULATED FLASK - OUT & ABOUT

The Insulated Flask included in this kit enables feeding on the go. Simply attach the digital lid to the insulated flask and check the colour of Nuby logo. A red logo indicates that the water is still hot enough to make a feed safely. Pre-warm the Insulated Flask with boiling water to keep water hotter for longer.

## DIGITAL LID

The integrated thermometer will activate the digital screen when it contacts water. The Nuby logo will light up and a colour. Colour indications are described below:

### RapidCool™ Flask

Green	Amber	Red
Feed is ready to dispense into bottle	Feed is too hot, please wait	Feed is too hot, please wait

### Insulated Flask

Green	Amber	Red
Water is not hot enough	Water is not hot enough	Water is hot enough

## COOLING TIMES

Cooling times should be used as a guide only. Always check food temperatures before feeding. Always follow formula powder manufacturer's instructions for making a feed.

Feed Size ( <i>ml</i> )	Water Volume ( <i>oz</i> )	Time to Cool ( <i>mins</i> )
<b>90</b>	<b>3</b>	<b>2</b>
<b>120</b>	<b>4</b>	<b>2</b>
<b>150</b>	<b>5</b>	<b>3</b>
<b>180</b>	<b>6</b>	<b>4</b>
<b>210</b>	<b>7</b>	<b>5</b>
<b>240</b>	<b>8</b>	<b>5</b>

## RAPIDCOOL™ FLASK RESET TIMES

Sterilisation/Cleaning Method	Reset Time*
<b>UV Sterilisation**</b>	<b>3 hours</b>
<b>Cold Water Sterilisation**</b>	<b>3 hours</b>
<b>Steam Sterilisation</b>	<b>4 hours</b>
<b>Dishwashing Cleaning</b>	<b>3 hours</b>

\* when sterilised immediately after use

\*\* these sterilisation methods do not generate heat and therefore do not activate the flask. If RapidCool™ Flask is cool to the touch, it can be used immediately after these sterilisation methods.

The RapidCool™ Flask works by absorbing heat from hot liquids. After being exposed to heat, it will require a minimum of 3 hours before being ready to use again.



# CLEANING

## PRODUCT PARTS

	Flask Base	Digital Lid	Plain Lid	Milk Powder Dispenser	Silicone Seal
<b>Steam Sterilisation</b>	✓	✗	✓	✓	✓
<b>Microwave Steam Sterilisation</b>	✗	✗	✓	✓	✓
<b>UV Sterilisation</b>	✓	✓	✓	✓	✓
<b>Cold Water Sterilisation</b>	✓	✓	✓	✓	✓
<b>Dishwasher Cleaning</b>	✓	✗	✓	✓	✓

STERILISATION & CLEANING METHODS

## **STORAGE**

- Do not store in direct sunlight or near a source of heat.
- Do not store with or allow to come into contact with solvents or harsh chemicals.
- Keep all components not in use out of reach of children.
- Do not leave in direct sunlight or heat, or leave in disinfectant ('sterilising solution') for longer than recommended as this may weaken the product.

## **WARNING!**

- Adult use only.
- Inspect before use. Throw away at first signs of damage or weakness.
- Always stir heated food to ensure even heat distribution and test temperature before serving.
- Always check food temperatures before feeding.
- When making up a feed, follow the formula milk manufacturer's instructions.
- Please keep out of reach of children.
- Do not use in microwave oven.
- Do not use with any other liquid than water.
- Using RapidCool™ Flask shortly after heating in any way may cause excessive external temperatures and risk of burns. Always allow RapidCool™ Flask to reset before use and handling.
- Handle freshly boiled water carefully. Handle RapidCool™ Flask carefully as the bottle base will heat up when in use. Do not prepare feed directly next to baby. Leave RapidCool™ Flask to cool after steam sterilisation.

## **END OF LIFE**

At end of life, dispose of whole product. Do not attempt to remove battery. Contact local waste authority for advice on disposing of electrical goods.

## **NHS GUIDELINES**

*Always prepare a feed to NHS guidelines*

### **Preparing A Feed**

**Important** - Ensure the RapidCool™ Flask, flask lid, feeding bottle and parts you plan to feed with have been cleaned and sterilised before use.

### **Planning To Travel Abroad?**

<https://www.nhs.uk/common-health-questions/childrens-health/can-i-use-bottled-water-to-make-up-baby-formula-infant-formula/>

### **More Information**

Find out more about bottle feeding

(<https://www.nhs.uk/conditions/pregnancy-and-baby/bottle-feeding-advice/>) and answers to common questions about formula feeds

(<https://www.nhs.uk/conditions/pregnancy-and-baby/infant-formula-questions/>).

## WARRANTY

Nûby's RapidCool™ Perfect Preparation includes a one-year limited warranty against defects from the date of purchase. In the event of a malfunction or defect during the in-warranty period, Nûby™, at its discretion, will replace or repair the product under warranty. Upon receipt of the product and the proof of purchase with a valid date of purchase, the defective part will be immediately repaired or replaced and returned to you free of charge. Please send defective unit, proof of purchase with valid date of purchase, and a description of the problem you have encountered to:

**Nûby™**

Nuby UK LLP  
13 Burford Way  
Baldon Business Park  
Baldon Colliery  
Newcastle upon Tyne  
NE35 9PZ

Form PIC/UK: 48014

© 2021 Luv n' care®, Ltd.

Nûby & Nuby logo are trademarks  
licensed to Luv n' care®, Ltd.

Made in China

**EC REP** DC PHARM Calle Filadores,  
S/N - NAVE 3  
Olesa de Montserrat, 08640  
Barcelona, SPAIN



Note: This warranty does not cover a defect that has been caused by negligence, accident or improper use of the product.

Questions: Call 0800 334 5844 (UK only),  
email [enquiries@nuby-uk.com](mailto:enquiries@nuby-uk.com) or visit [www.nuby-uk.com](http://www.nuby-uk.com)

For competitions & offers join us on



**@nubyuk**