

# TIDRADIO TD-777S Programming Guide

## INTRODUCTION

TD-777S is a UHF radio. It offers 22 channels, you can add or remove channels from scanning list and give channels alphanumeric names via programming with a computer. This Programming Guide will help you get a quick start to program the radio.

\*If you have any problem with the TD-777S radio using or programming, please don't hesitate to contact us via support: [walkietalkiesoftware.com](http://walkietalkiesoftware.com). Also visit our Facebook pages ([TIDRADIO](#)) for more help. It's always our honor to help.

## Contents

1. Frequency Chart.....	2
2. Preparation before Programming.....	2
3. Manufacture Software Programming Process .....	6

## 1. Frequency Chart

22 Modifiable FRS Two Way Channels (Channels 1-22) - Receive and Transmit.

CH	Rx Freq	Tx Freq	Tx Power	CH	Rx Freq	Tx Freq	Tx Power
1	462.56250	462.56250	High	12	467.66250	467.66250	Low
2	462.58750	462.58750	High	13	467.68750	467.68750	Low
3	462.61250	462.61250	High	14	467.71250	467.71250	Low
4	462.63750	462.63750	High	15	462.55000	462.55000	High
5	462.66250	462.66250	High	16	462.57500	462.57500	High
6	462.68750	462.68750	High	17	462.60000	462.60000	High
7	462.71250	462.71250	High	18	462.62500	462.62500	High
8	467.56250	467.56250	Low	19	462.65000	462.65000	High
9	467.58750	467.58750	Low	20	462.67500	462.67500	High
10	467.61250	467.61250	Low	21	462.70000	462.70000	High
11	467.63750	467.63750	Low	22	462.72500	462.72500	High

## 2. Preparation before Programming

### 2.1. Computer System Requirements

Manufacture Programming Software Operating System: Windows 7, Windows 8 and Windows 10

### 2.2. Programming Cable

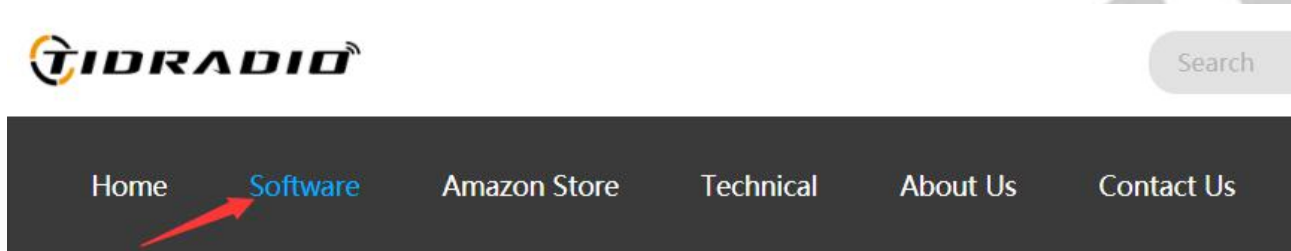
A.CH340 programming cable - The driver should be installed before programming.

You can search [B08QCW5CZJ](#) on Amazon to purchase a CH340 programming cable if you do not have one.

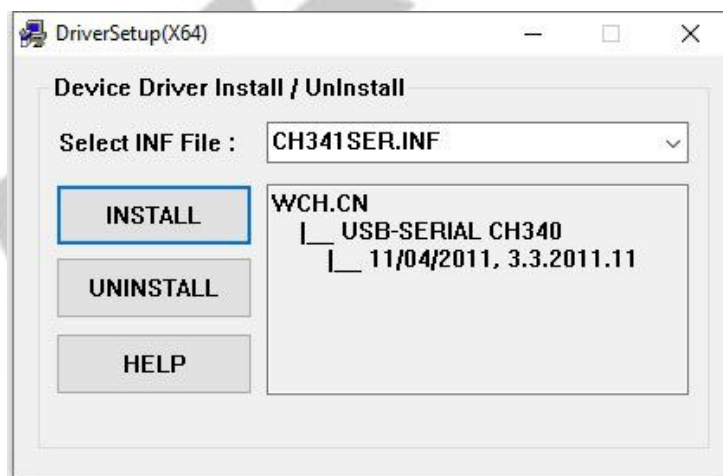
Product link:

[https://www.amazon.com/TIDRADIO-Driver-Programming-Portable-Radios/dp/B08QCW5CZJ/ref=sr\\_1\\_1?dchild=1&keywords=B08QCW5CZJ&qid=1627973624&sr=8-1](https://www.amazon.com/TIDRADIO-Driver-Programming-Portable-Radios/dp/B08QCW5CZJ/ref=sr_1_1?dchild=1&keywords=B08QCW5CZJ&qid=1627973624&sr=8-1)

Driver download link: [walkietalkiesoftware.com](http://walkietalkiesoftware.com)



- 1) Find the corresponding driver of the system.
- 2) Click and wait for the download.
- 3) Click install and wait for the installation.



B. FTDI programming cable, it does not need to be installed with a driver. You can just plug in and use directly.

You can search [B08CB5KT5M](#) on Amazon to purchase a FTDI cable if you do not have one.

Product link:

[https://www.amazon.com/TIDRADIO-Programming-BaoFeng-Retevis-Radioddi ty/dp/B08CB5KT5M/ref=sr\\_1\\_1?dchild=1&keywords=B08CB5KT5M&qid=16279 73909&sr=8-1](https://www.amazon.com/TIDRADIO-Programming-BaoFeng-Retevis-Radioddi ty/dp/B08CB5KT5M/ref=sr_1_1?dchild=1&keywords=B08CB5KT5M&qid=16279 73909&sr=8-1)

1) If your computer did not automatically install the driver, you will need to update the driver to the latest driver.

Download the latest FTDI driver at : <https://ftdichip.com/drivers/vcp-drivers/>

### **2.3. Software Download & Install**

- 1) Turn on the computer, check if your computer system meets the requirements.
- 2) Download the manufacture software on [walkietalkiesoftware.com](http://walkietalkiesoftware.com)
- 3) Install the programming software.

### **2.4. Connect your Walkie Talkie with Computer**

- 1) USB programming cable connects with the computer end.
- 2) Connect the other end of the cable with your walkie talkie.
- 3) When both ends have been connected, turn on your radio. Make sure it has enough power during the programming procedure.

### **ERROR: Failed to Connect to the transceiver (Radio)**

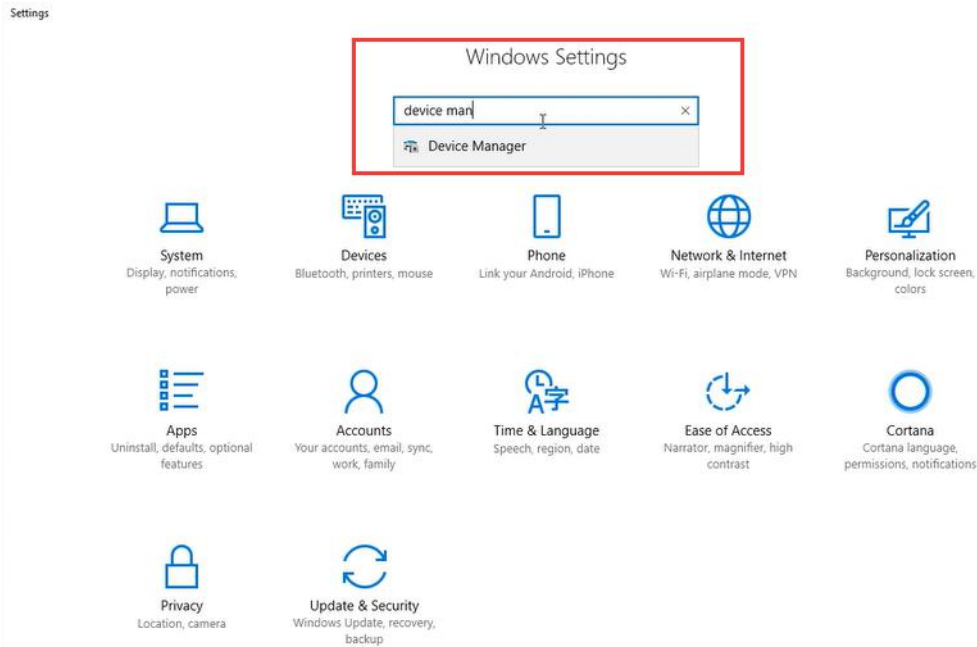
If it says it cannot connect to the radio - this means the cable is working but is not installed correctly into the radio.

#### **Items to Check:**

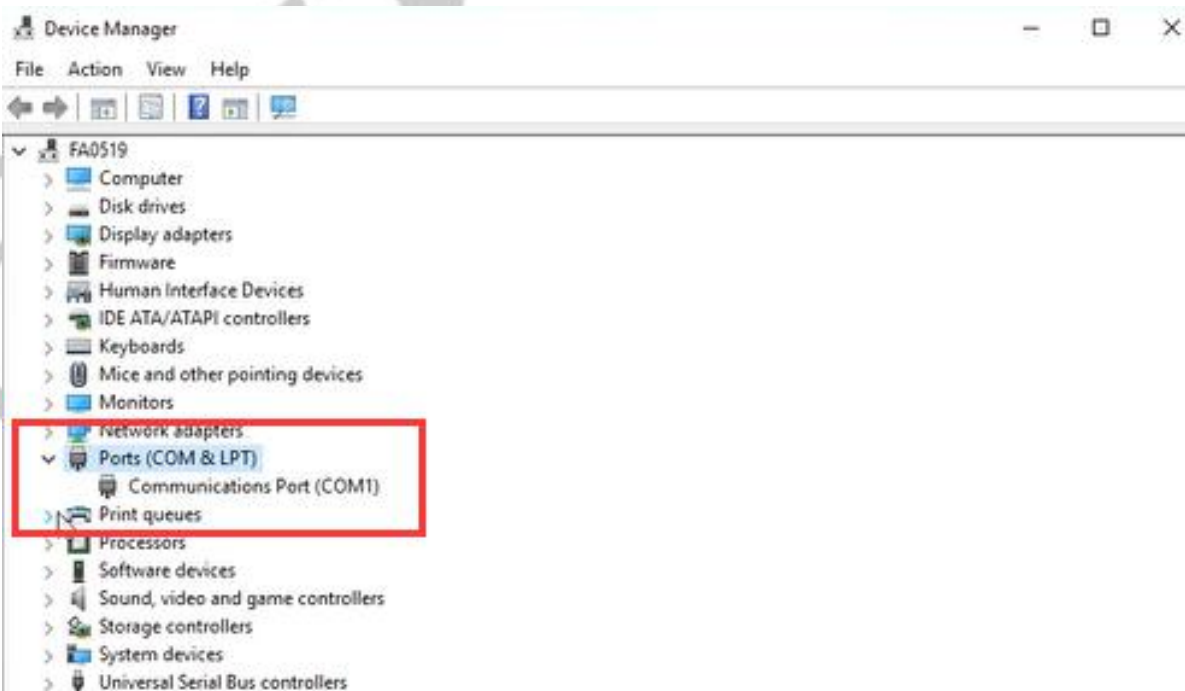
- Radio is turned on
- The cable is FULLY inserted (it can be deceiving but there is a double click)
- Hold the cable into the radio - some radios might not make contact without pressure
- A way to cheat - dampen the pins of the cable before pushing it into the radio. This will give a solid contact

## 2.5.How to choose your port?

1)Get into “Window Setting”, then search “Device Manager”.



2)Open “Device Manager”, and unfold Port (COM & LPT) to check the existing port.



3)CH340 chip programming cable port is **USB-SERIAL CH340 (COM?)**

 端口 (COM 和 LPT)

 **USB-SERIAL CH340 (COM6)**

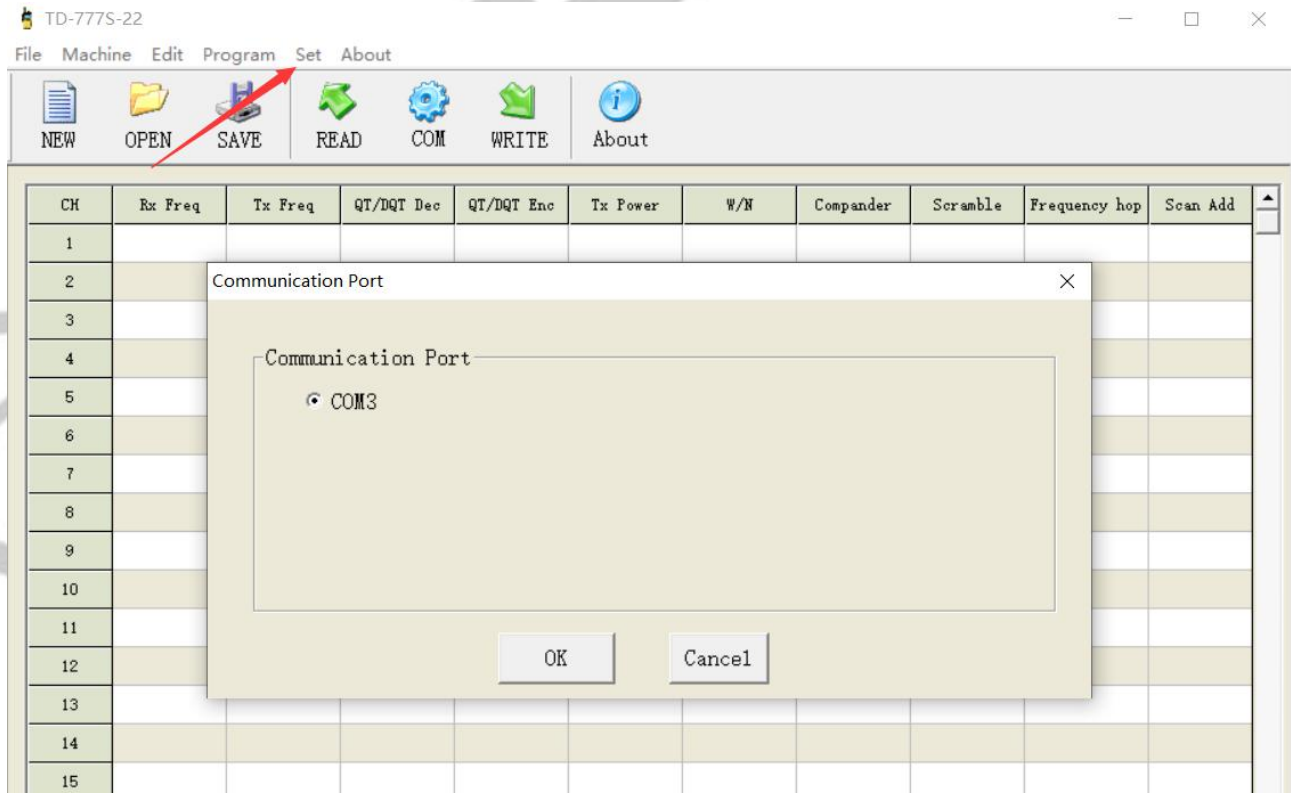
4)FTDI chip programming cable port is **USB Serial Port (COM?)**

端口 (COM 和 LPT)

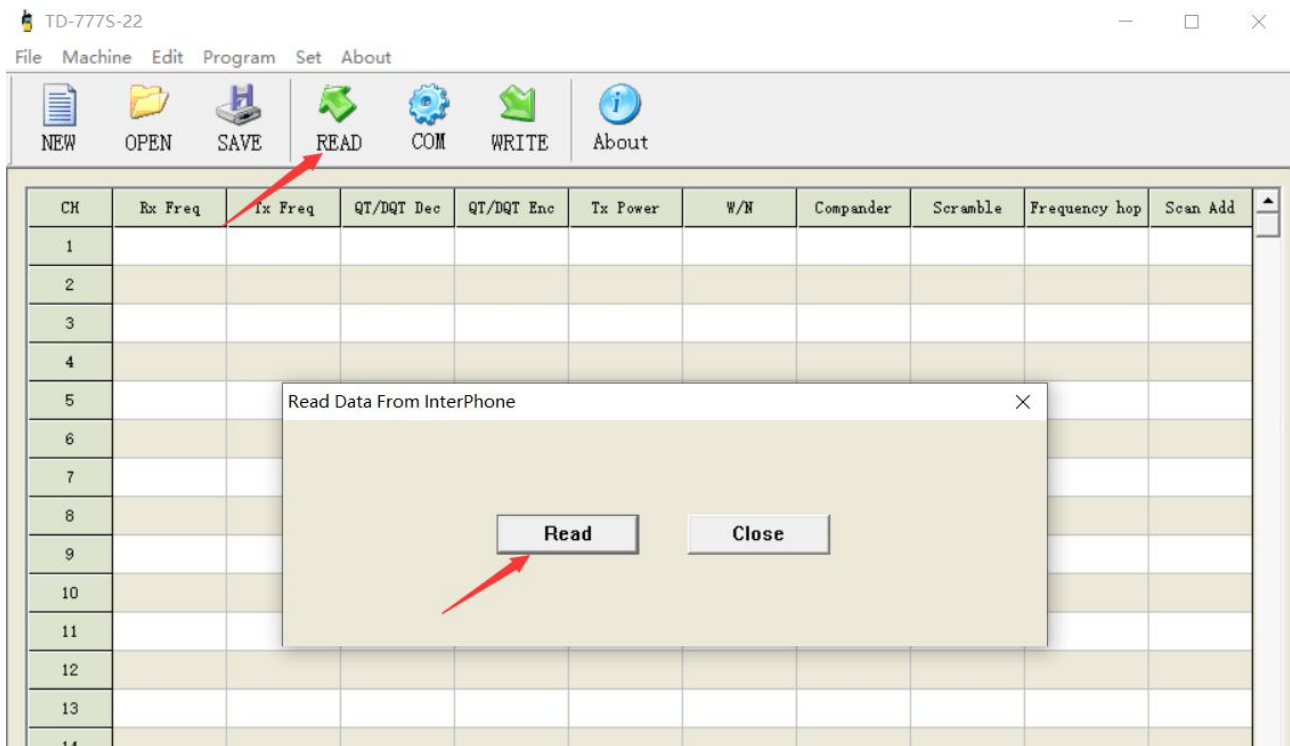
 **USB Serial Port (COM3)**

### 3.Manufacture Software Programming Process

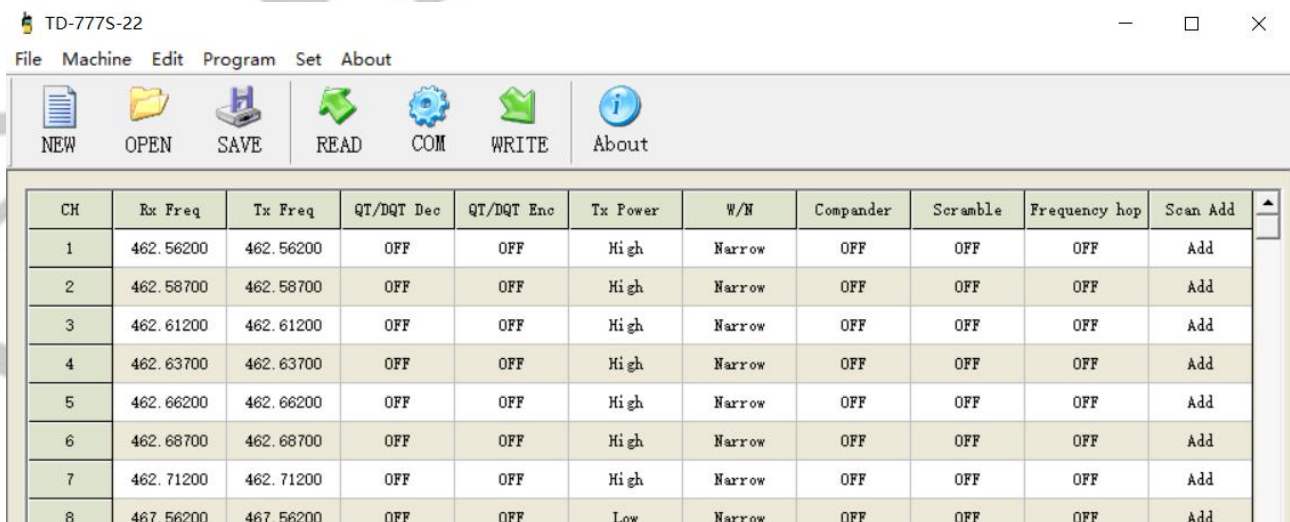
1) Download and open the manufacture software. Click "Set→Communication Port" and then Confirm the port the same as the port viewed by Device Manager, then click the "OK" button.



2) Click the "READ" button, then click "Read" below and ready to read the data from your radio.( Make sure the radio is turned on)



3) You will come to the parameter page and adjust the parameters. According to the US FCC rule, FRS radio cannot modify the frequency and bandwilde.

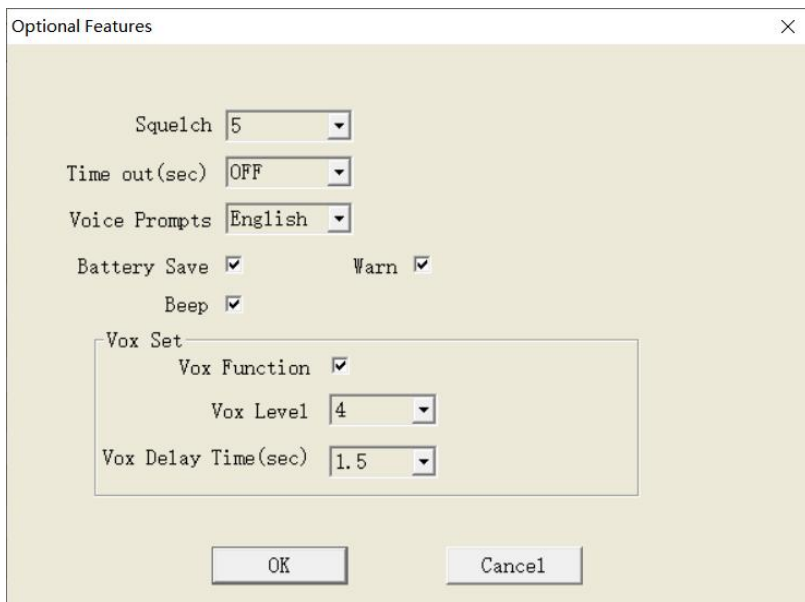


## Channel Information

The TD-777S radio has 22 channels, you can edit the channel number and channel information according to your needs. The following is an introduction to each term.

Name	Meaning	Setting	Description
QT/DQT Dec	Receiving CTCSS/DCS	Refer to the DCS table and CTCSS table in the manual.	Mutes the speaker of the transceiver in the absence of a specific low level digi tal signal. If the station you are listenin g to does not transmit this specific sign al,you will not hear anything.
QT/DQT Enc	Transmitting CTCSS/DCS	Refer to the DCS table and CTCSS table in the manual.	Transmits a specific low-level digital signal to unlock the squelch of a distant receiver (usually a repeater).
TX POWER	Transmit power	HIGH/LOW	High power:2W Low power:0.5W
Compander		OFF/ON	The compander can effectively compress part of the transmitted set signal before transmitting it to the other end, and then expand the signal at the receiving end.Also can noise reduction which improves the sound clarity and reduces the static hissing sound between two transmitted.(Notice:If compander is selected "on", the other party also needs to selected "on" to talking )
Scramble		OFF/ON	Scrambles your voice so eavesdroppers will not understand your conversation. Open this function can protect the conversation privacy. (Notice: All device be set to work in the scrambled mode under same level).
Frequency hop		OFF/ON	To further foil eavesdroppers, both your information and the pseudo noise codes hop from frequency to frequency. So that other machines can't receive your TX and RX frequency,then your communication will be privacy.(Notice: If frequency hop is selected "on", the other party also needs to selected "on" to talking)
Scan add		OFF/ON	In the scan mode, whether add the channel to the scan list. <b>ON:</b> the channel is added to scan list; <b>OFF:</b> the channel cannot be scanned.

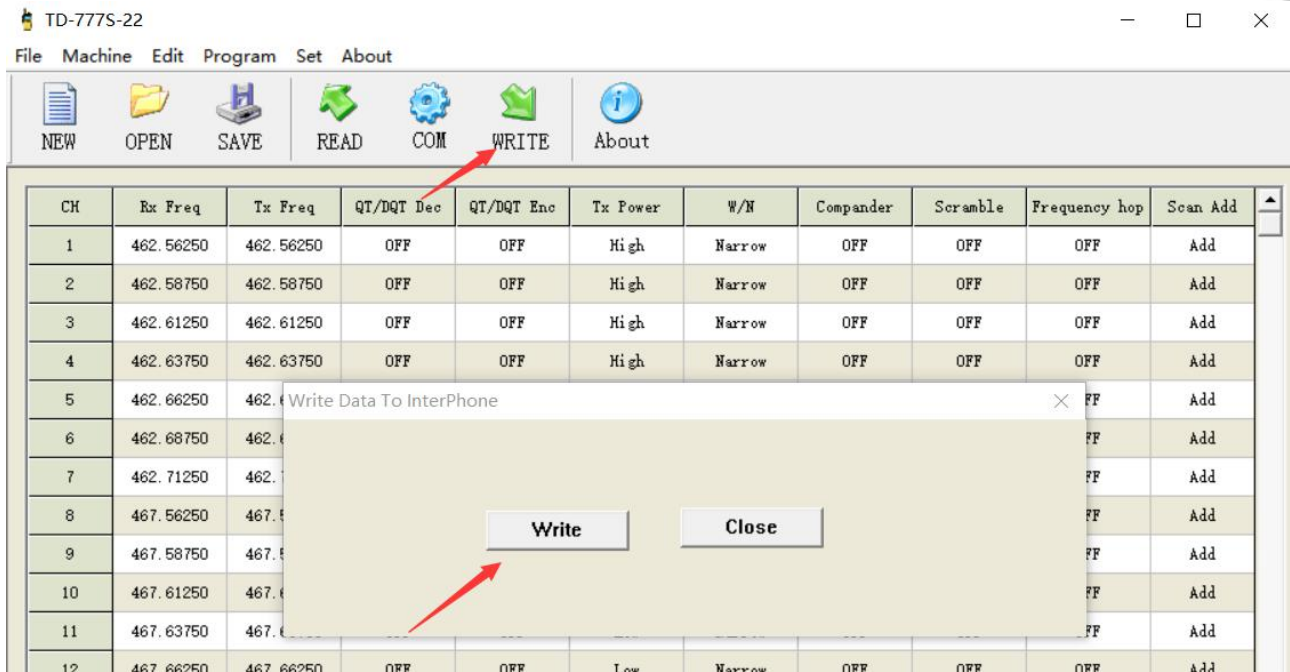
4) You can adjust the parameters (VOX Function, Squelch, Voice Prompt, etc.)



### Optional Features

Name	Meaning	Settings	Description
Time out(sec)	Transmission time-out timer	Off/15-600s	This feature provides a limits transmission time to a programmed value. This will promote battery conservation by not allowing you to make excessively long-timetransmissions and in the event of a stuck PTT switch, it can prevent interference to other users as well as battery depletion.
Squelch	Squelch Level	0-9	Mutes the speaker of the transceiver in the absence of a strong signal. Squelch is either 0 or 1-9 levels. The higher level, the stronger the signal must be to in-mute the speaker.
Vox Set	Voice operated TX	Off/1-9	When enabled it is not necessary to push the [PTT] button on the transceiver. Adjust the gain level to an appropriate sensitivity to allow smooth transmission.
Voice Prompts		Off/Chinese/English	Switch voice prompts.
Battery Save			Turn on battery power saving.
Beep			There will be a beep sound when powering on.
Warn			Turn on the emergency alarm function.

5) Finally, all the modification will be saved by clicking the "WRITE" button, then clicking the "Write" button on the popup. And you can check the setting you modified after reboot the radio.



\*If you have any problem with the TIDRADIO TD-777S radio using or programming, please don't hesitate to contact us via support: [walkietalkiesoftware.com](http://walkietalkiesoftware.com). Also visit our Facebook pages ([TIDRADIO](#)) for more help. It's always our honor to help.