

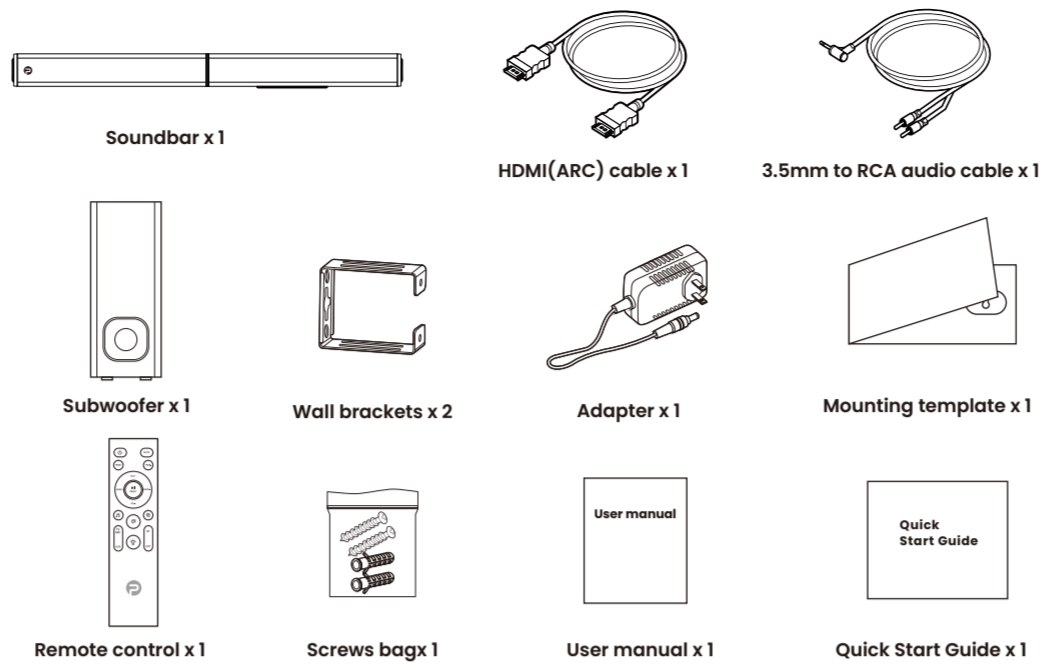
# READ ME FIRST

Everything you need to know about setting up included

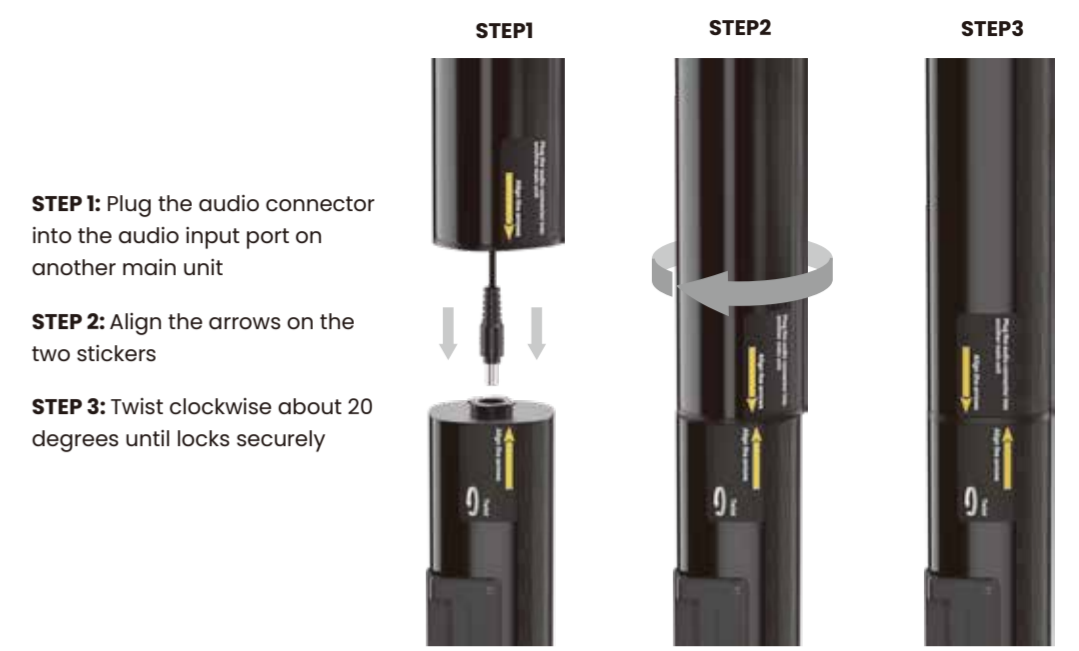
Quick Start Guide

Model: D6

## 1 CHECKING THE COMPONENTS



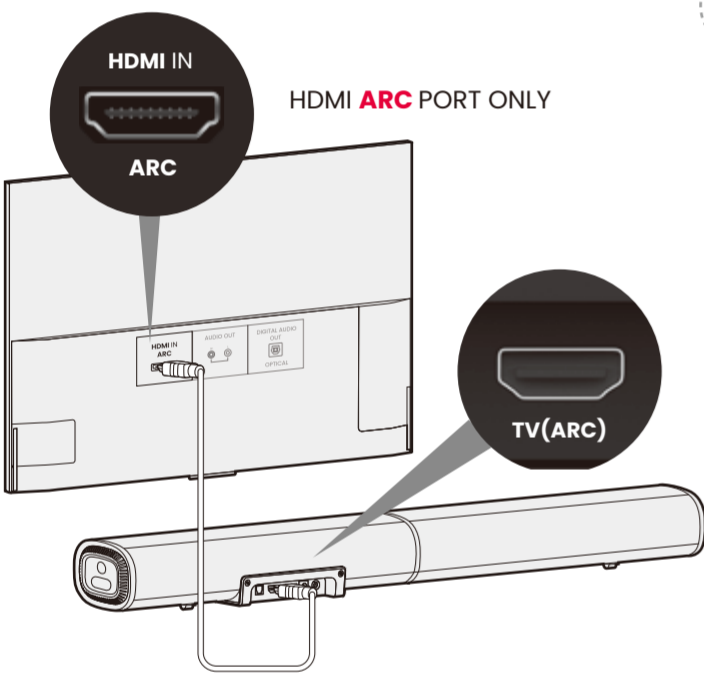
## 2 SOUNDBAR ASSEMBLE DETAILS



## 3 CONNECTING A TV

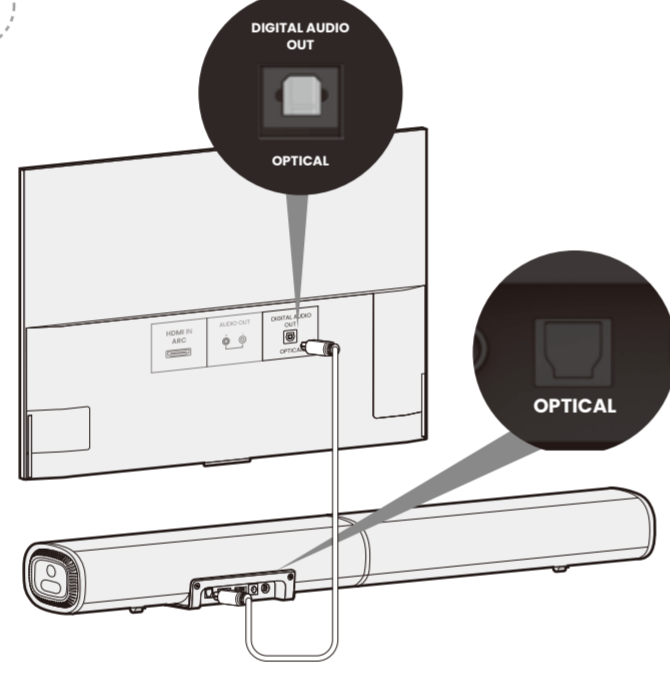
### OPTION 1 (Preferred) : HDMI ARC

If the TV has an ARC (Audio Return Channel) label on one of its HDMI ports, connect the HDMI cable to your TV's **HDMI ARC** jack and the soundbar's **TV(ARC)** jack.



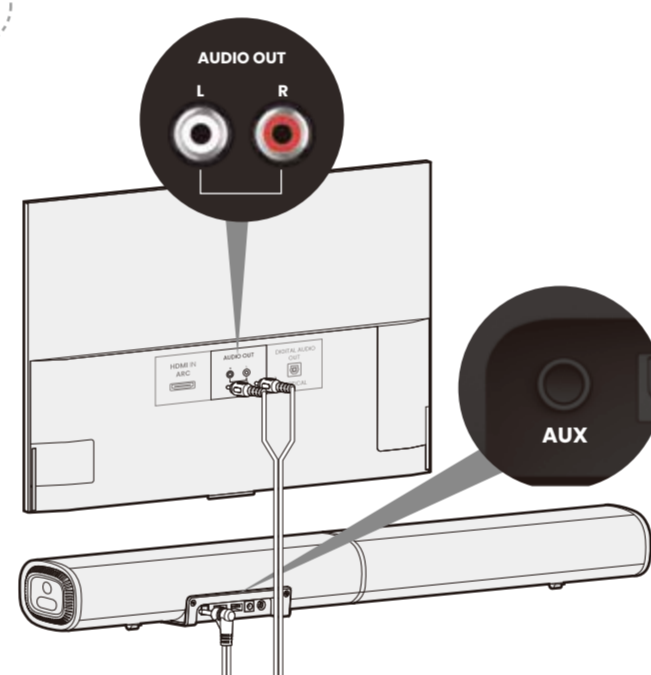
### OPTION 2 : OPTICAL

If the TV has no ARC label on its HDMI ports, connect the optical cable to your TV's **OPTICAL OUT** jack and the soundbar's **OPTICAL** jack.



### OPTION 3 : AUX

If the TV has no ARC label on its HDMI ports, connect the 3.5mm to RCA audio cable to your TV's **AUDIO OUT** jack and the soundbar's **AUX** jack.



OR

OR

#### NOTE

- HDMI connection is unavailable if your TV does not have a HDMI port labeled "ARC"
- Connecting via HDMI(ARC) enable the following functions using the TV's remote control:

- Turn the power on and off
- Both the TV and the sound bar turn on/off at the same time.
- Volume adjustment

The sound bar's volume can be adjusted when the TV's audio output is set to the sound bar.

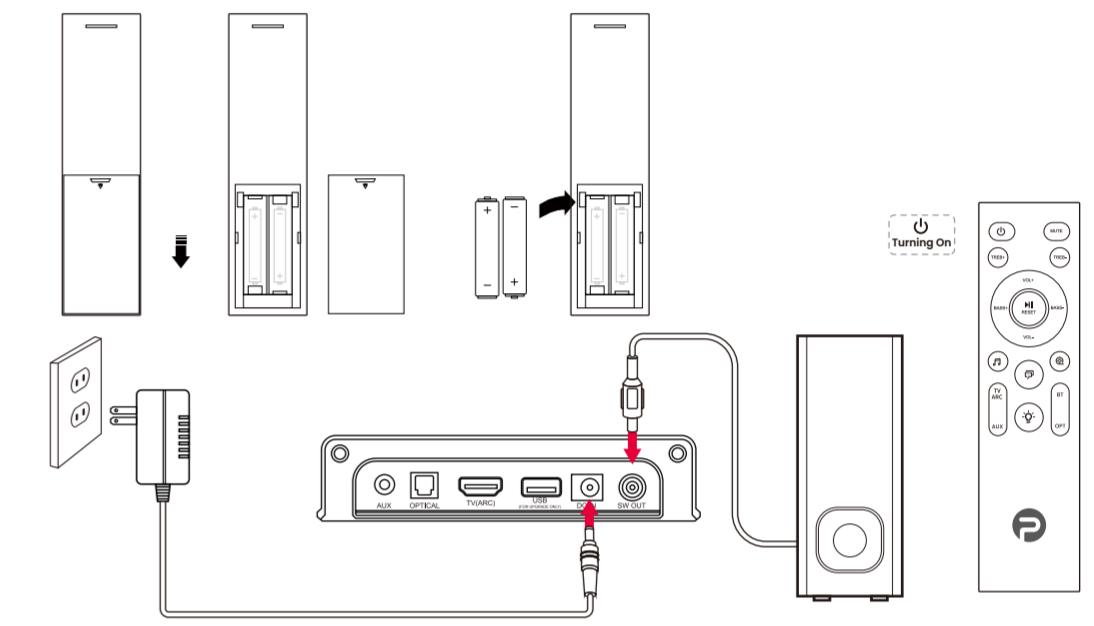
#### NOTE

- If you hear audio coming from TV's internal speaker, make sure TV speaker off or min volume

#### NOTE

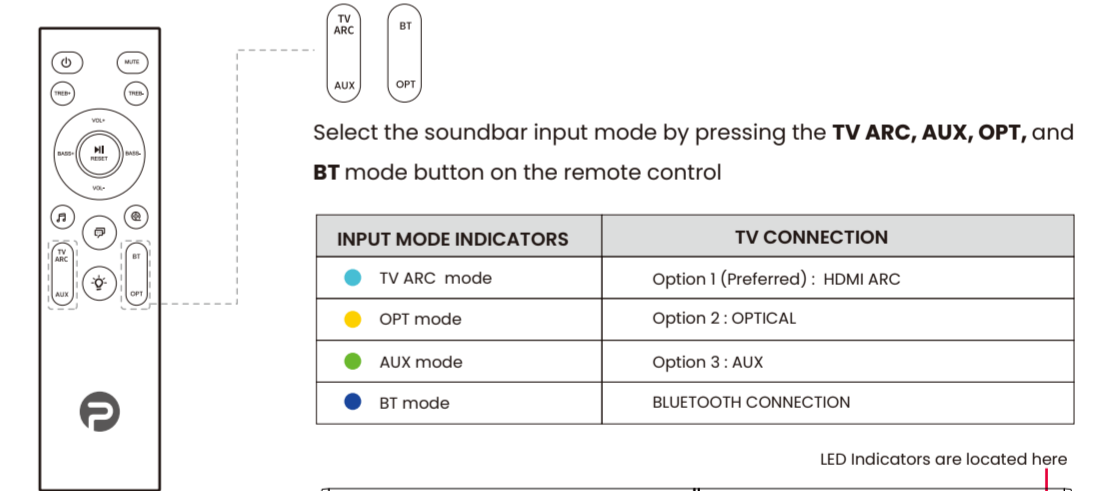
- Make sure that the cable ends match the color of the ports.
- Some TV models have AUDIO IN jack only. It can't deliver audio signal to soundbar.

## 4 POWER YOUR SYSTEM



\*Batteries not included for shipping safety. Two AAA batteries needed\*

## 5 CHOOSE INPUT MODE



Select the soundbar input mode by pressing the **TV ARC**, **AUX**, **OPT**, and **BT** mode button on the remote control

| INPUT MODE INDICATORS | TV CONNECTION                   |
|-----------------------|---------------------------------|
| TV ARC mode           | Option 1 (Preferred) : HDMI ARC |
| OPT mode              | Option 2 : OPTICAL              |
| AUX mode              | Option 3 : AUX                  |
| BT mode               | BLUETOOTH CONNECTION            |

LED Indicators are located here

#### NOTE

- Input mode on soundbar needs to match the connected external device (TV, Projector, Cable box, etc.) output mode.
- Make sure LED light on soundbar matches TV connection method.

## 6 CHANGE AUDIO SETTINGS ON YOUR TV

### ! Very Important!!!



2.Enable **Consumer Electronics Control (CEC)** on your TV(Exclusive for Option 1: HDMI ARC connection)

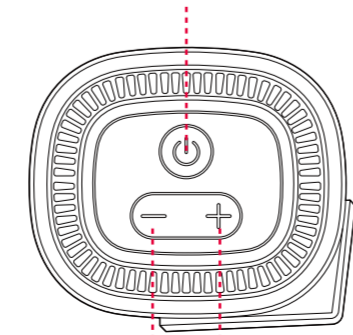
#### NOTE

1. Only Option 1: HDMI ARC connections needs to enable CEC
2. These are names different brands might use for HDMI-CEC: Samsung(AnyNet+++), Vizio(CEC), Sony(Bravia Sync), LG(SimpliLink), Sharp(Aquos Link), Philips (EasyLink), Roku(1-Touch Play)

## 7 CONTROL YOUR SOUNDBAR

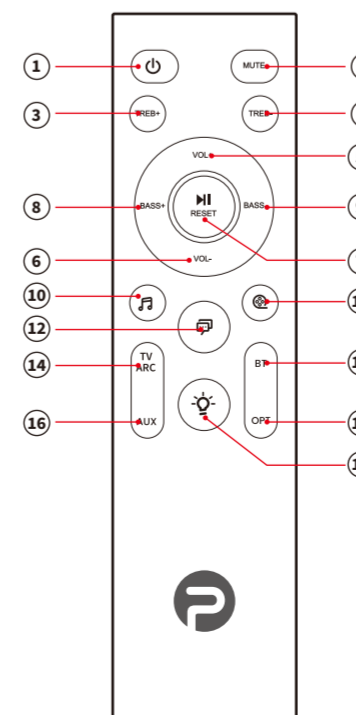
### 7a. Top panel

Long Press 3 Seconds---Power On/Off  
Short Press 1 Second---Switch Input Source



Volume Down      Volume Up

### 7b. Remote control

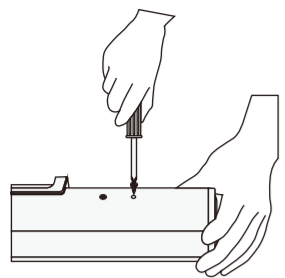


- POWER**  
Turns on the Sound Bar or sets it to standby mode.
- MUTE**  
Turns off the sound temporarily
- TREB+**  
Increase treble level
- TREB-**  
Decrease treble level
- VOL+**  
Increase volume
- VOL-**  
Decrease volume
- RESET(PLAY/PAUSE)**  
Start, pause or resume play in BT Mode Press and hold for about 2 seconds to reset the volume level and switch to the Music EQ effect.
- BASS+**  
Increase bass level
- BASS-**  
Decrease bass level
- MUSIC**  
Selects MUSIC for the sound effect
- MOVIE**  
Selects MOVIE for the sound effect
- DIALOGUE**  
Selects DIALOGUE for the sound effect
- INDICATOR**  
Press to turns on/off the indicators on the Bar Speaker.
- TV ARC**  
Set the input source for the Soundbar to HDMI ARC mode
- BT**  
Set the input source for the Soundbar to Bluetooth mode
- AUX**  
Set the input source for the Soundbar to AUX mode
- OPT**  
Set the input source for the Soundbar to Optical mode

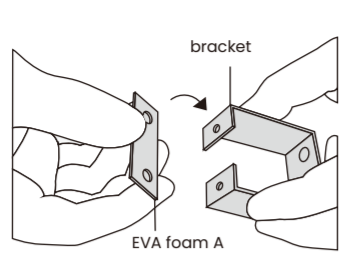
Continued on back page

## 8 Mounting your PHEANOO D6 Sound Bar

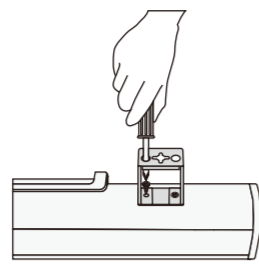
1. Remove the 2 screws from the main unit



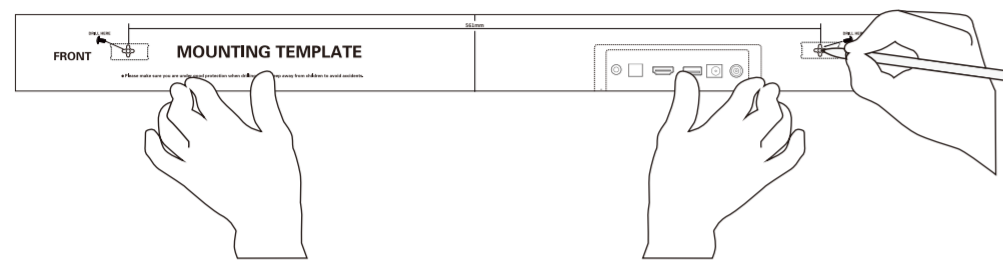
2. Paste the EVA foam A (with holes) on the wall bracket



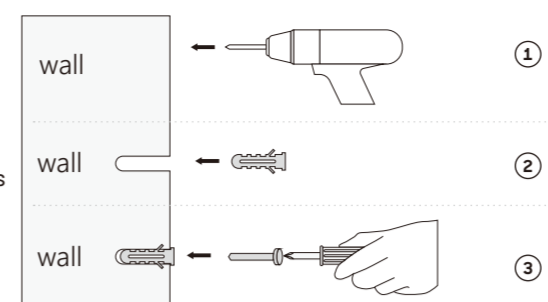
3. Install the wall bracket into the main unit



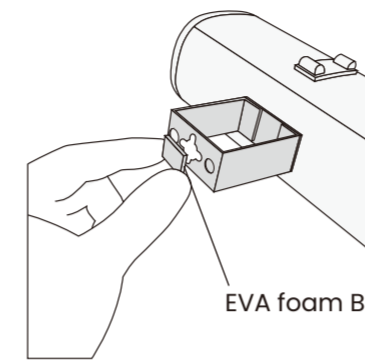
4. Mark the wall



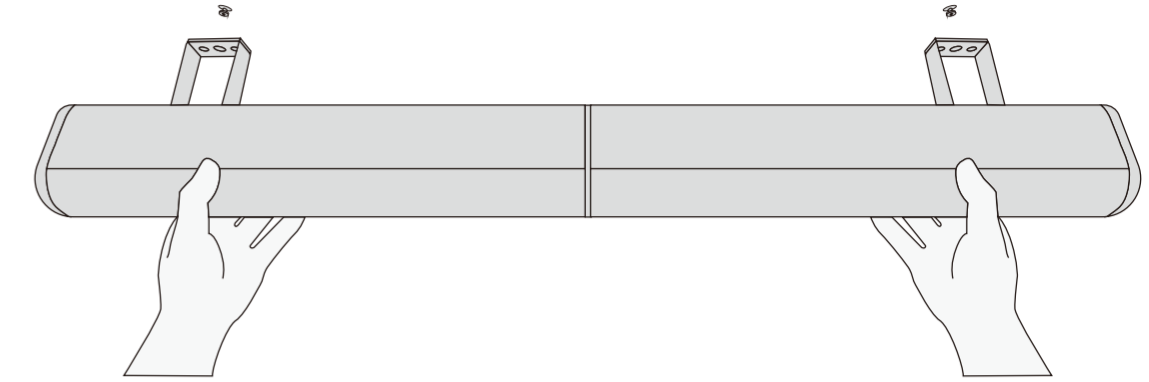
5. ① Drill screw holes at markings  
② Insert the wall anchors  
③ Insert the screws into the wall anchors



6. Paste the EVA foam B (without holes) on the wall bracket



7. Hang the soundbar on the wall



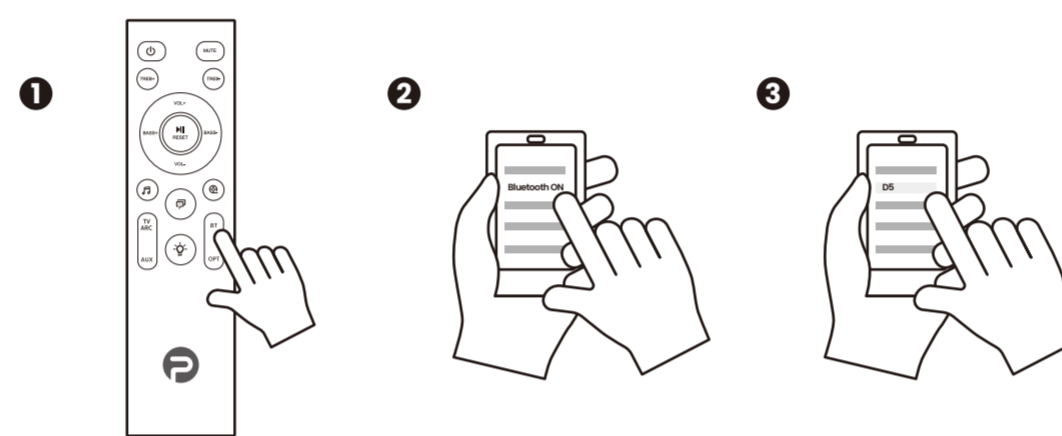
## 9 BLUETOOTH CONNECTION (OPTIONAL)

1. Press the (Bluetooth) button on the Soundbar (or remote control unit) until the Bluetooth LED blinks in blue.

2. Go to the Bluetooth settings on your device and make sure Bluetooth is turned ON.

3. Select "D6".

• The Bluetooth LED turns solid blue to indicate that the Soundbar is being paired with your Bluetooth device



## 10 TROUBLESHOOTING

| ISSUES    | PROBLEMS                                  | SOLUTIONS  |
|-----------|---|--|
| Sound     | No sound from SoundBar speakers           | <ol style="list-style-type: none"> <li>1. Make sure that the soundbar is plugged into a power source</li> <li>2. Make sure the soundbar's HDMI cable is inserted into an HDMI ARC or Audio Return Channel connector on your TV, not a standard HDMI connector.</li> <li>3. If the soundbar is connected to your TV's HDMI ARC connector, make sure that Consumer Electronics Control (CEC) is enabled in your TV system menu. Your TV may refer to CEC by a different name. Refer to your TV owner's guide.</li> <li>4. On the remote control, select the correct audio input.</li> <li>5. Ensure the audio output format is set to PCM</li> </ol> |
|           | Distorted sound or echo                   | Distorted sound or if you play audio from the TV through the SoundBar, make sure that the TV is muted.   |
| Bluetooth | A device cannot connect with the SoundBar | You have not enabled the Bluetooth function of the device. See the user manual of the device on how to enable the function.  |
|           |   | The SoundBar is already connected with another Bluetooth device. Disconnect the connected device, then try again.  |

## 11 FIRMWARE UPDATE

Occasionally, PHEANOO provides important firmware updates for your soundbar. Updating the firmware on your soundbar gives you all the benefits of the latest improvements. If an update is available from PHEANOO, you can download it onto a USB device, and then upload it to your soundbar.

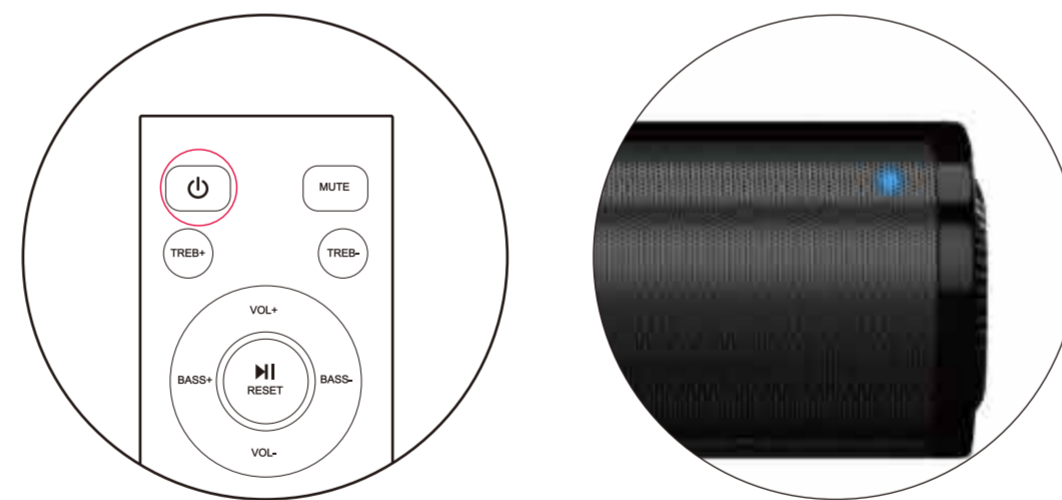
### Step 1. Preparing the USB Drive

1. Important Specs for USB Drive: USB2.0; Max Drive Size: 32GB
2. Plug an USB drive into your PC / Mac
3. Reformat the USB drive to "FAT16" or "FAT32" format.

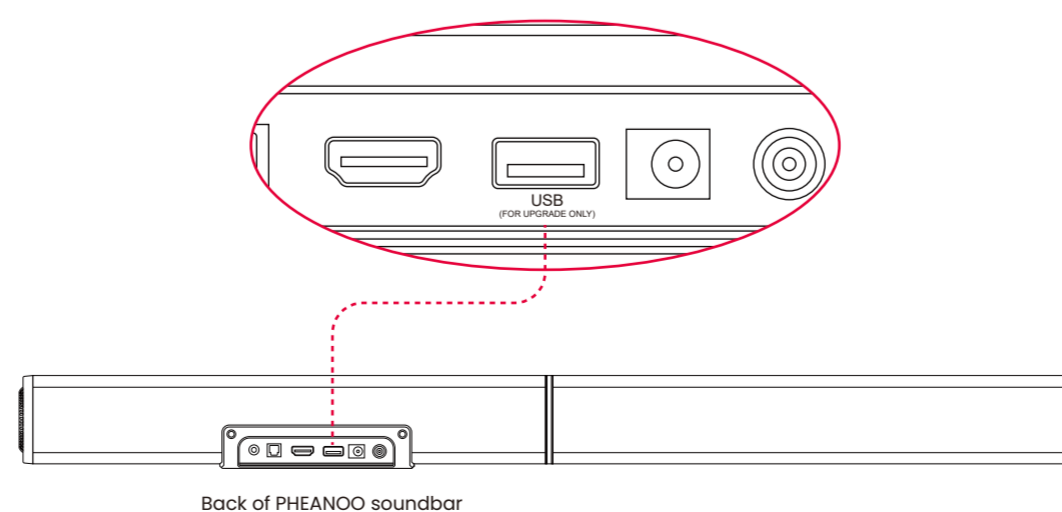


### Step 3. Press the Power on button on your remote control

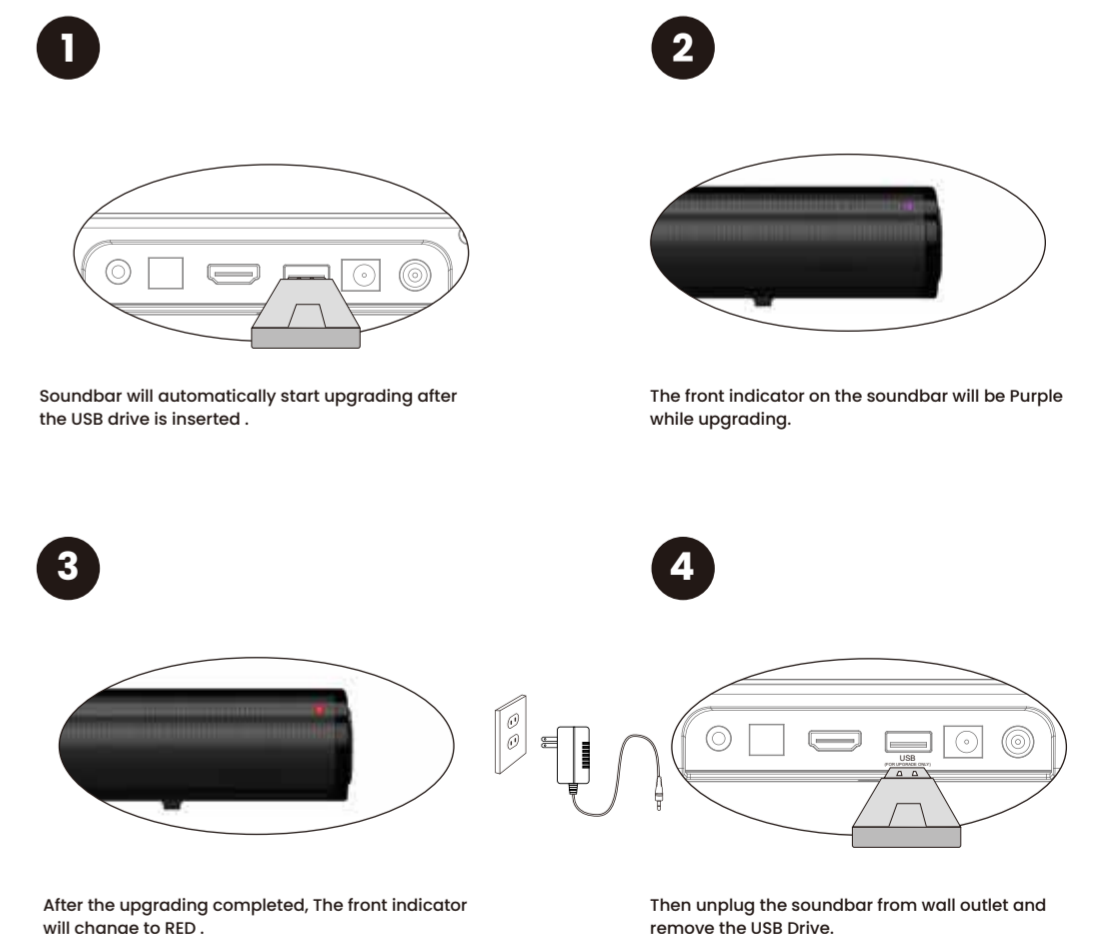
Power on the soundbar



### Step 4. Plug USB Drive into USB Port



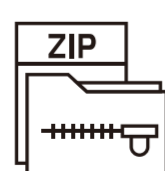
### Step 5. Upgrading the Soundbar



### Step 2. Download the Firmware Version from [www.pheanoo.com/firmware.html](http://www.pheanoo.com/firmware.html)



A. Download the "D5 FIRMWARE"



B. Unzip the download file



C. Open the folder to locate "fw5000.upd" firmware files



D. Copy and Paste the "fw5000.upd" files into your USB drive.  
Do not change the name of the files  
(Do not copy the folder or the update will not work)

### IMPORTANT

1. Only drives with these specs will work: USB2.0; Max Drive Size: 32GB.
2. Do not remove USB drive or turn off your Soundbar while upgrading.  
\* If soundbar system does not work after the firmware upgrade, please contact our support immediately at [support@pheanoo.com](mailto:support@pheanoo.com)