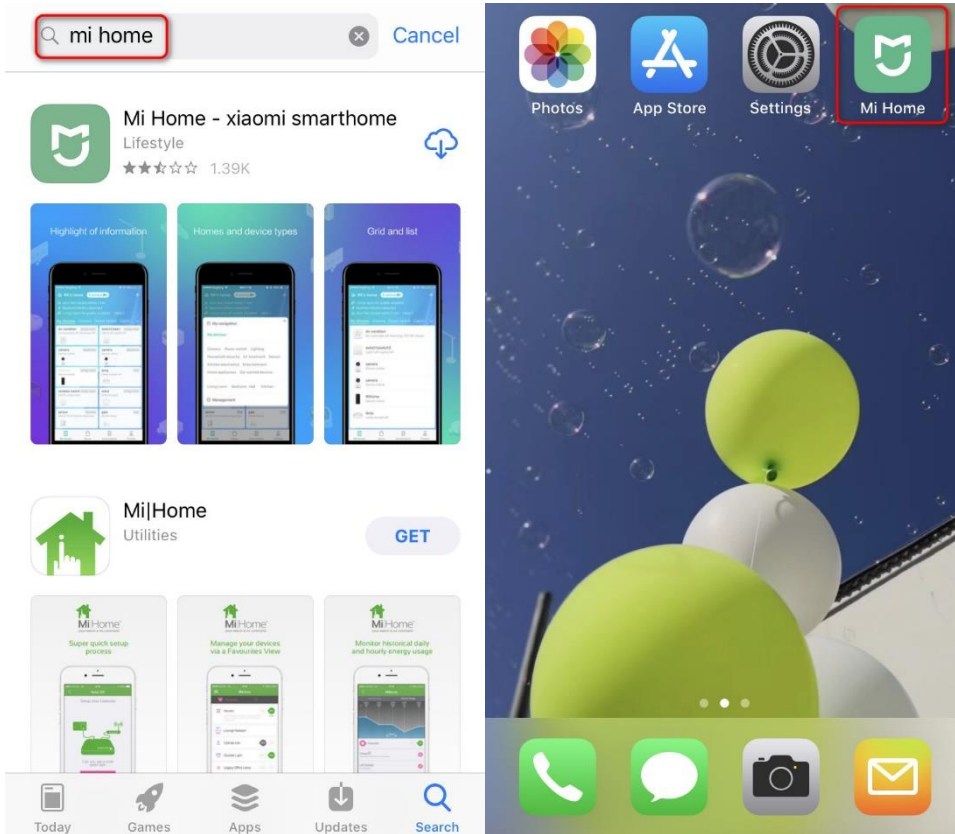
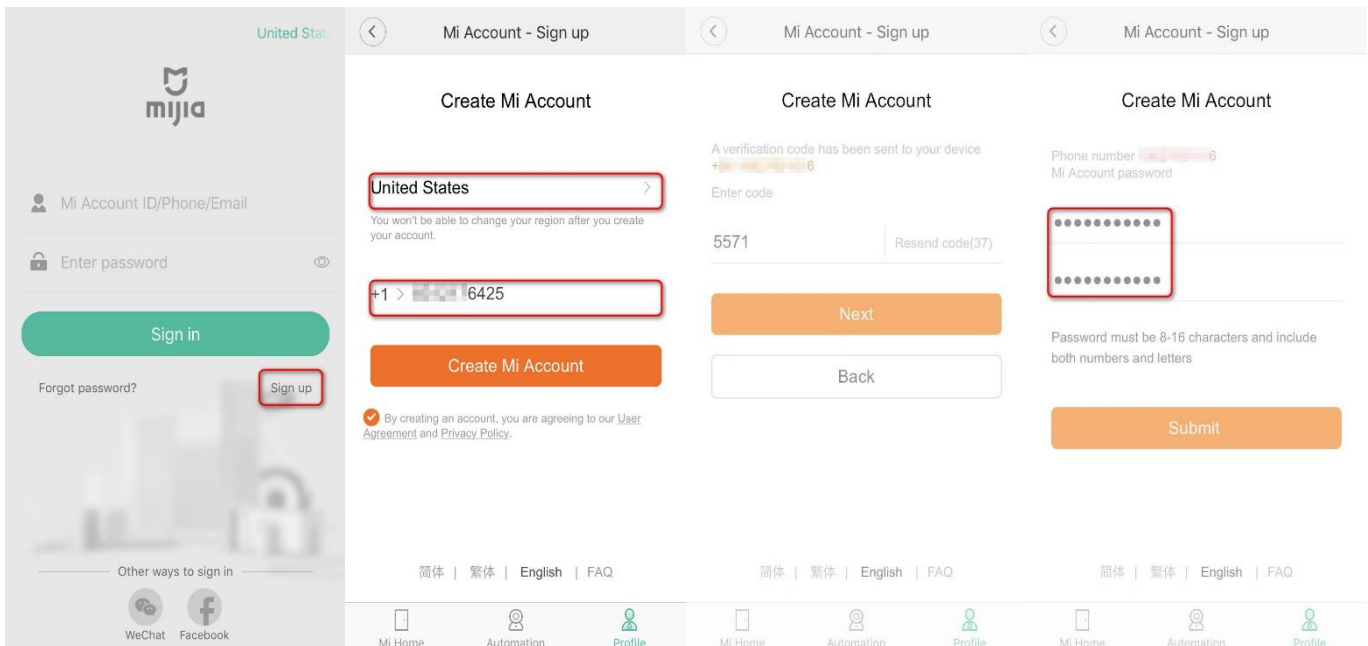


# How do I connect my Roborock device to Wi-Fi on an iOS device?

## 1. Download the Mi Home from the App Store.



## 2. Register for a Mi Home account using your phone number (Skip this step if you already have a Mi account).

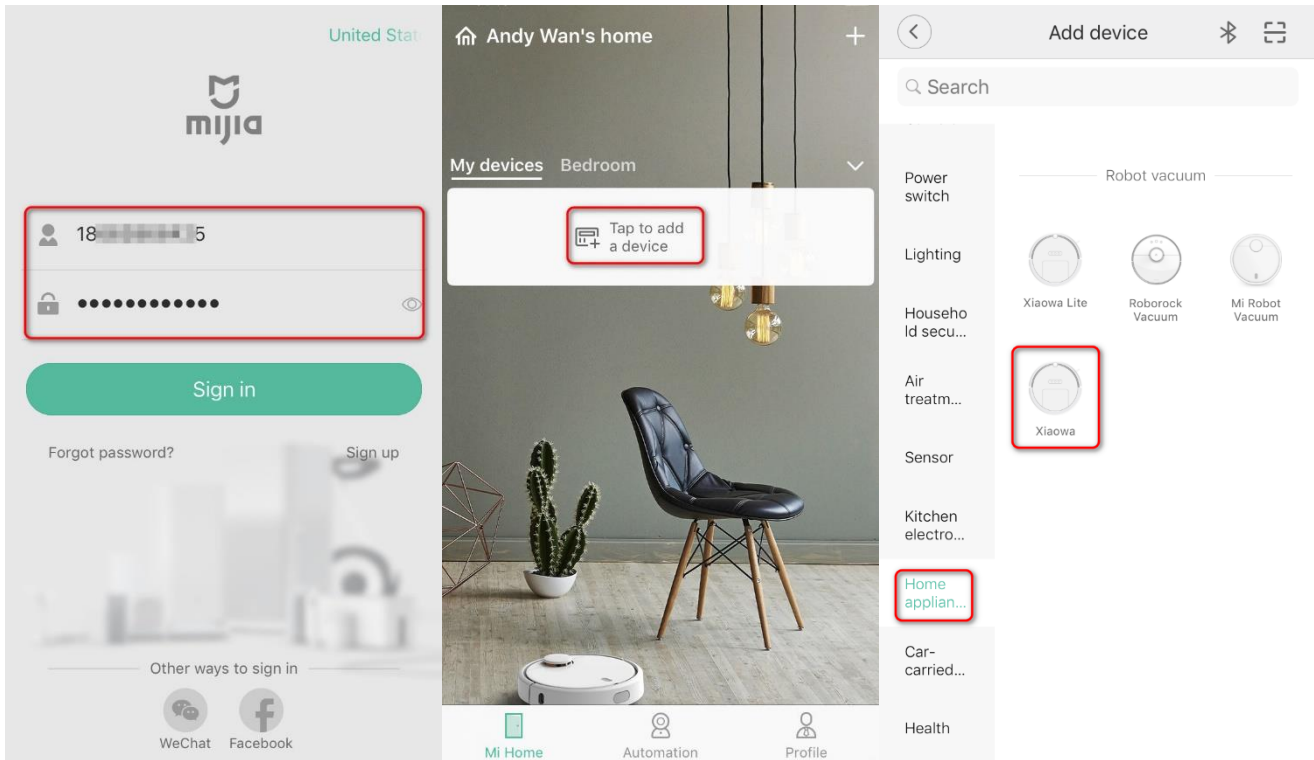


## 2. Add Roborock Device

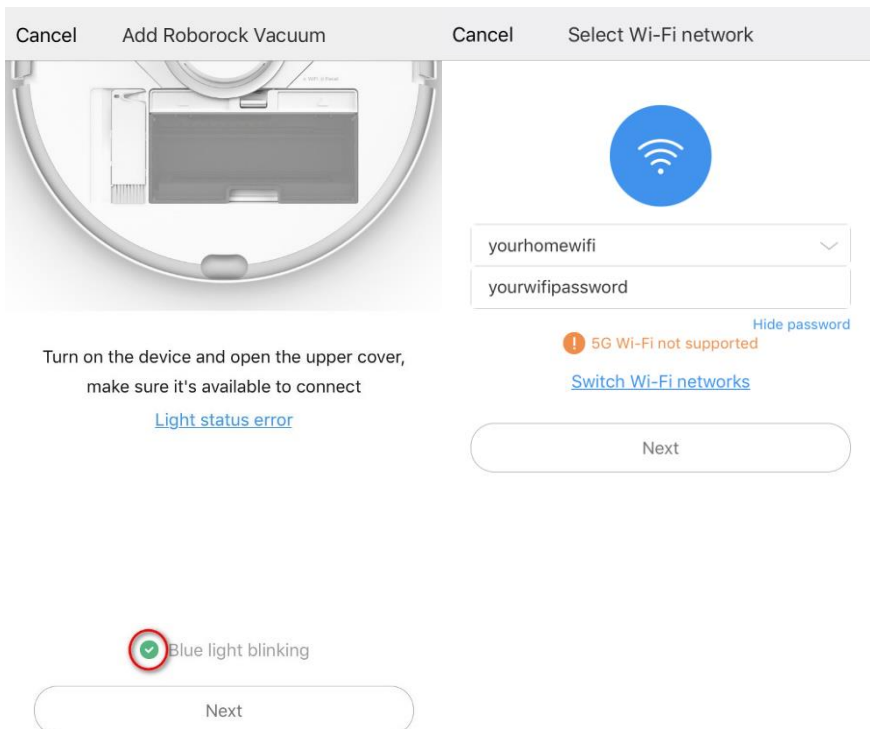
### Notes:

- a. Make sure your phone is already connected to Wi-Fi;
- b. Open the top of your cleaner to see the Wi-Fi indicator light during the connection process.

- 3.1 Sign in to you Mi Home account.
- 3.2 Tap the “+” icon to add a device.
- 3.3 Select Xiaowa from the “Home appliance” category.

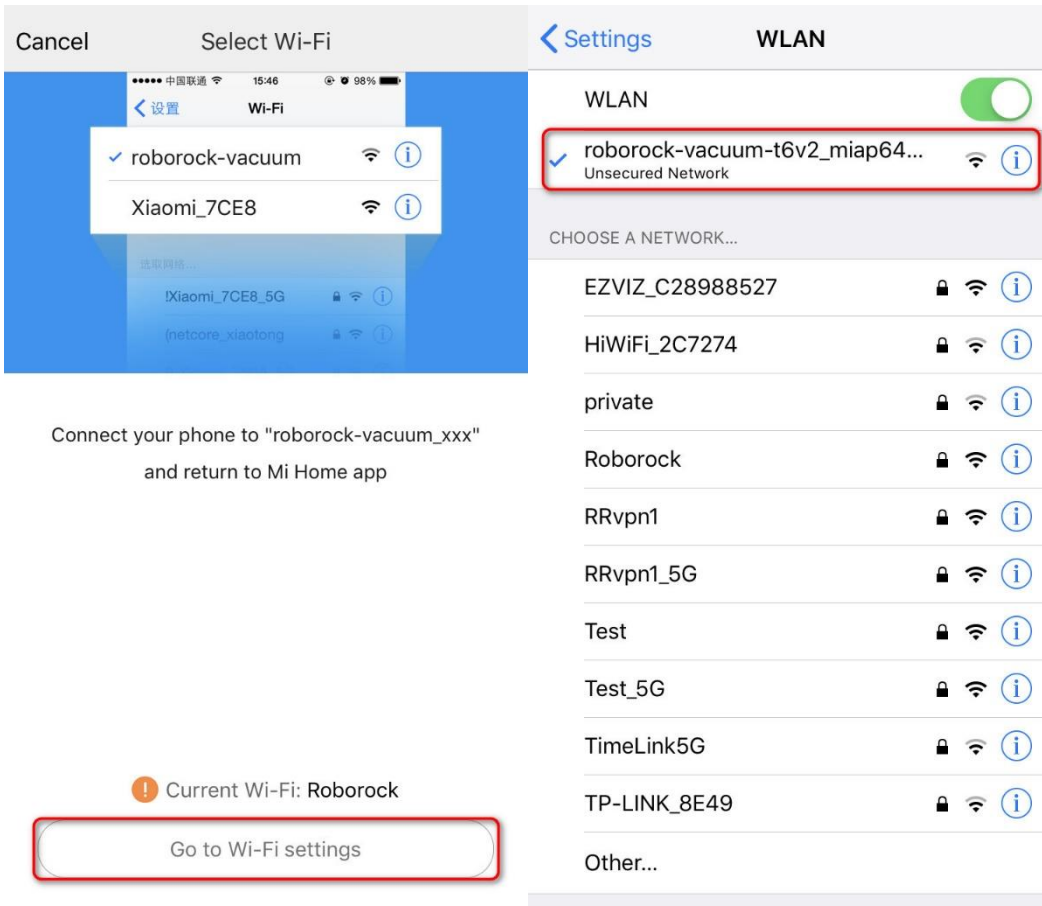


- 3.4 Tick “Blue Light Blinking”.
- 3.5 Select your home Wi-Fi and input your Wi-Fi password.



3.6 Tap "Go to Wi-Fi Settings".

3.7 Select Wi-Fi network named roborock-vacuum-xxxx to connect.

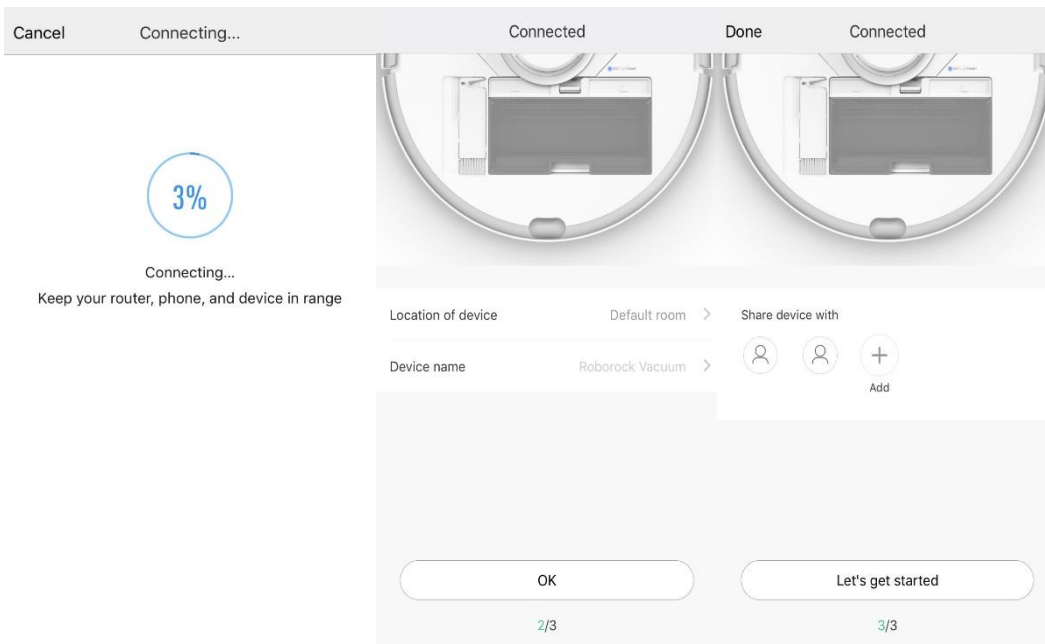


3.8 Go back to the Mi Home app and the connection interface will appear. Wait until it reaches 100%.

3.9 Select the location of device and give it a name.

**Note:**

*The Wi-Fi indicator on the top of your vacuum will go from flashing to solid if it has connected successfully.*



#### 4. Access device to operate.

4.1 Tap the device in the Mi Home homepage and wait until initializing reaches 100%.

4.2 Select your current region and you are ready to control your device from the app.

