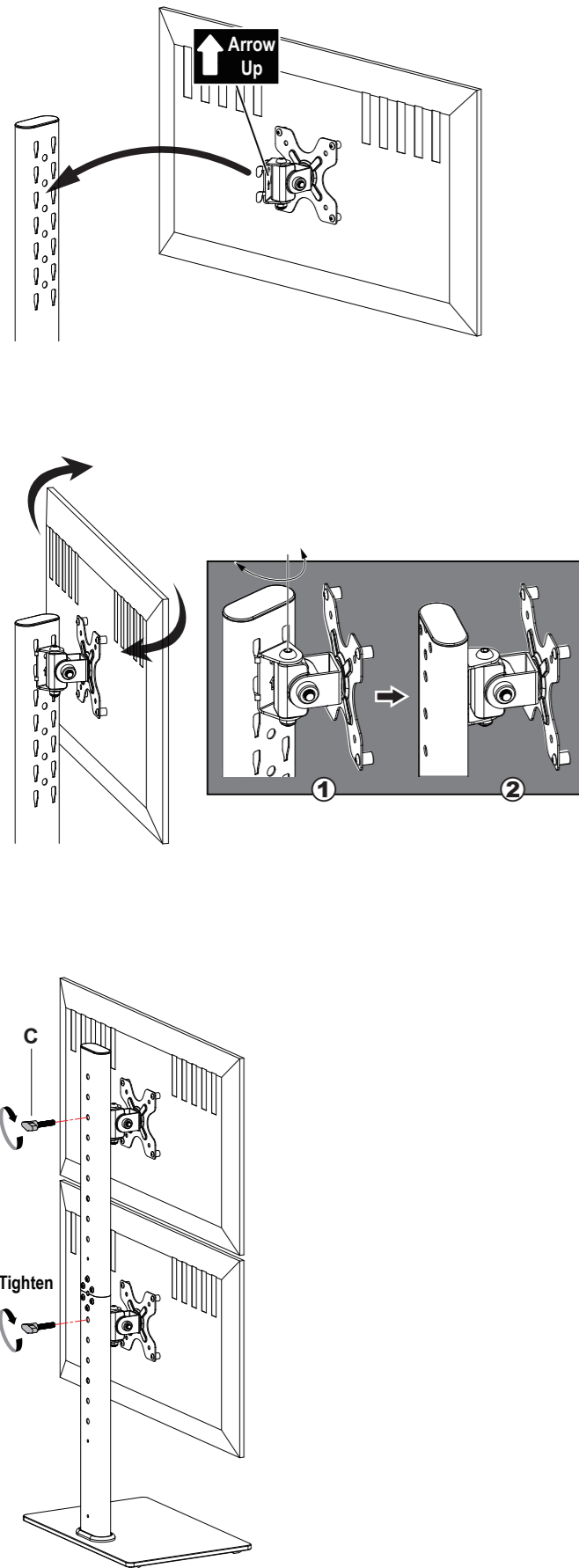


3 Hang Monitor

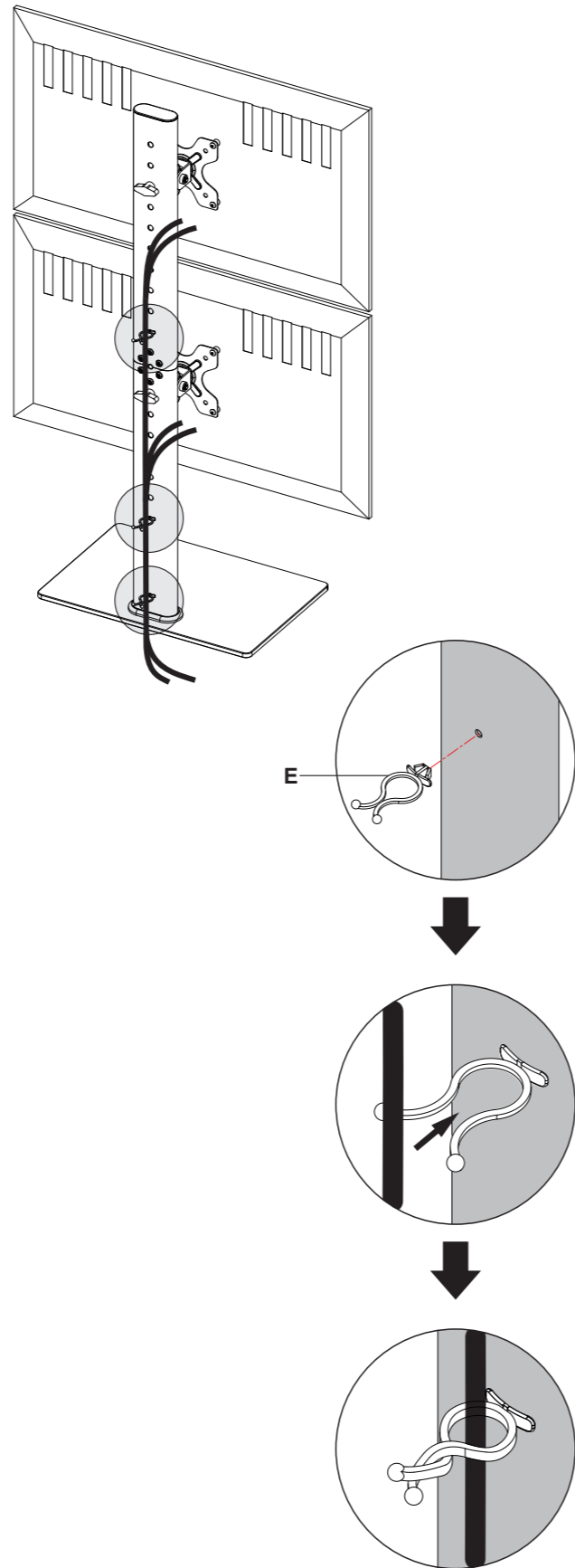
1. Select the appropriate height and hang the monitor on the pillar.
2. Rotate the monitor facing toward the front.
3. Tighten them with handle bolt (C).



5

4 Cable Management

Attach wire clips (E) into the holes of support pillar. Manage cables with the wire clips (E).

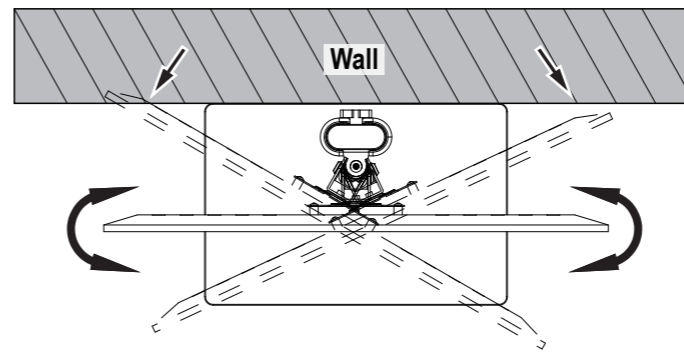


6

5 Angle Adjustments (If necessary)

Swivel Adjustment

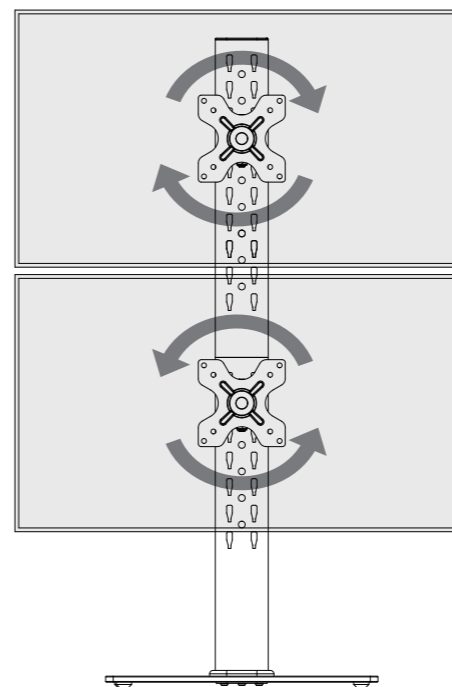
NOTE: When the monitor stand is placed against the wall, the actual swivel angle is determined by the screen size.



Leveling Adjustment

Note: To ensure stability, the tightness of the rotating axis has been preset, so it would be kind of difficult to rotate the VESA plate.

Suggestion: Please attach the monitor first, then hold the sides of it with both hands, and rotate vigorously. If that doesn't work out, please do not hesitate to ask for our help.

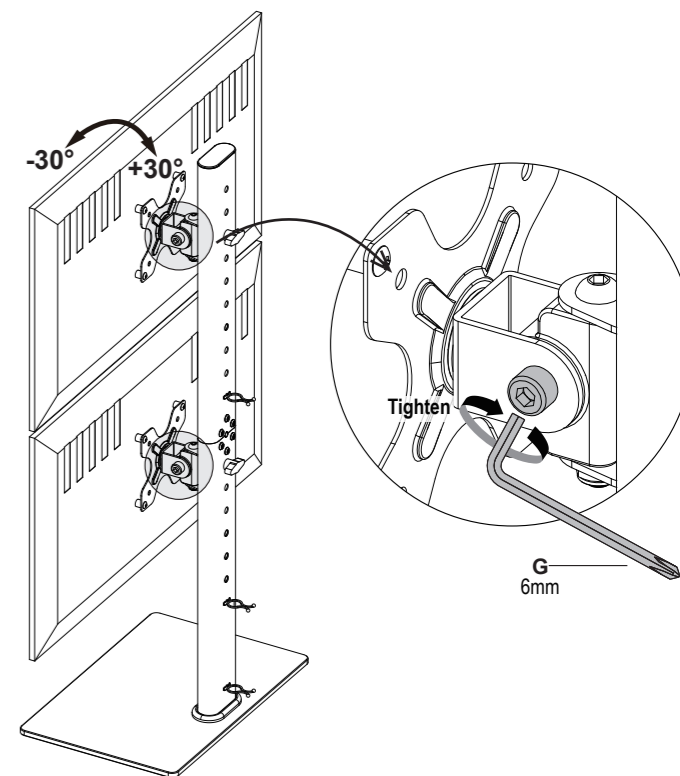


7

5 Angle Adjustments (If necessary)

Tilting Adjustment

1. Loosen the tilting bolt.
2. Adjust monitor to your desired tilt angle.
3. Retighten the tilting bolt to fix the intended angle.



8