



OFFICE CHAIR ASSEMBLY INSTRUCTION

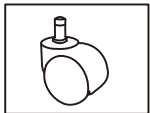
<http://www.paylesshere.com>



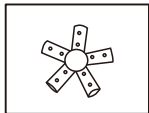
THANK YOU FOR PURCHASING OFFICE CHAIR

JRF-IT51-FDW

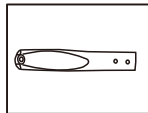
PARTS LIST



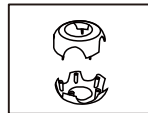
A 5xWheels



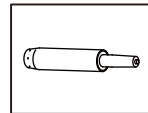
B 1xcentral base tube



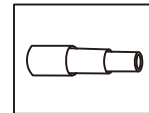
C 5xsplit base tube



D 1xbase cover



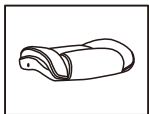
E 1xgas lift



F 1xdust cover



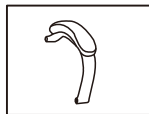
G 1xmechanism



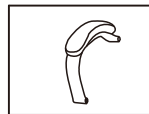
H 1xseat



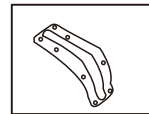
I 1xback



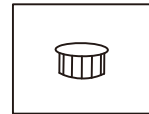
J Right armrests



Left armrests



K 1xBack Bar



L 4xPlastic caps



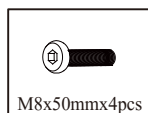
M8x25mmx2pcs

M 2xscrews



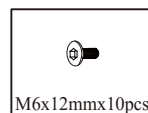
M8x35mmx6pcs

N 6xscrews



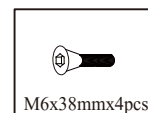
M8x50mmx4pcs

O 4xscrews



M6x12mmx10pcs

P 10xscrews



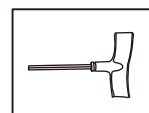
M6x38mmx4pcs

Q 4xscrews



Non-slip washerx4pcs

R 4xwashers



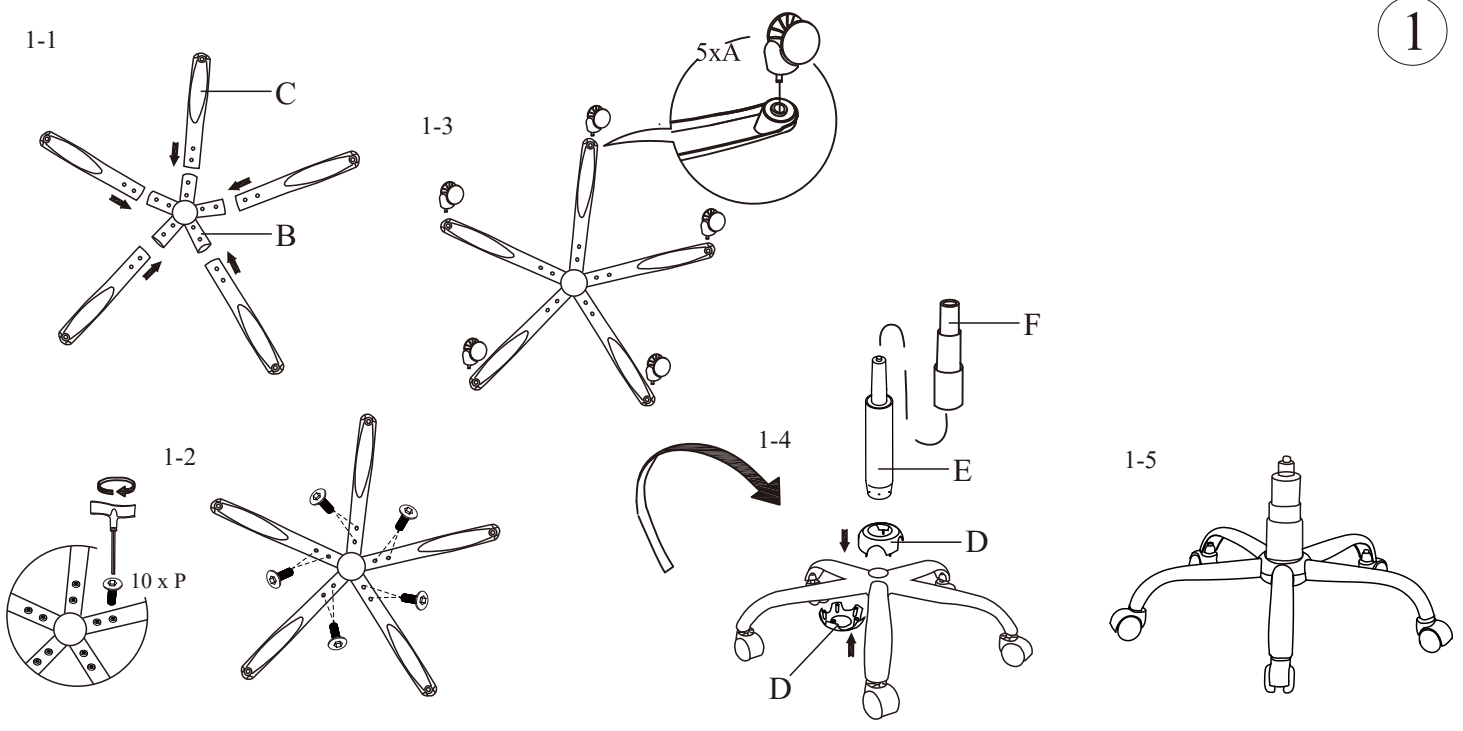
S 1xallen key

WARNING

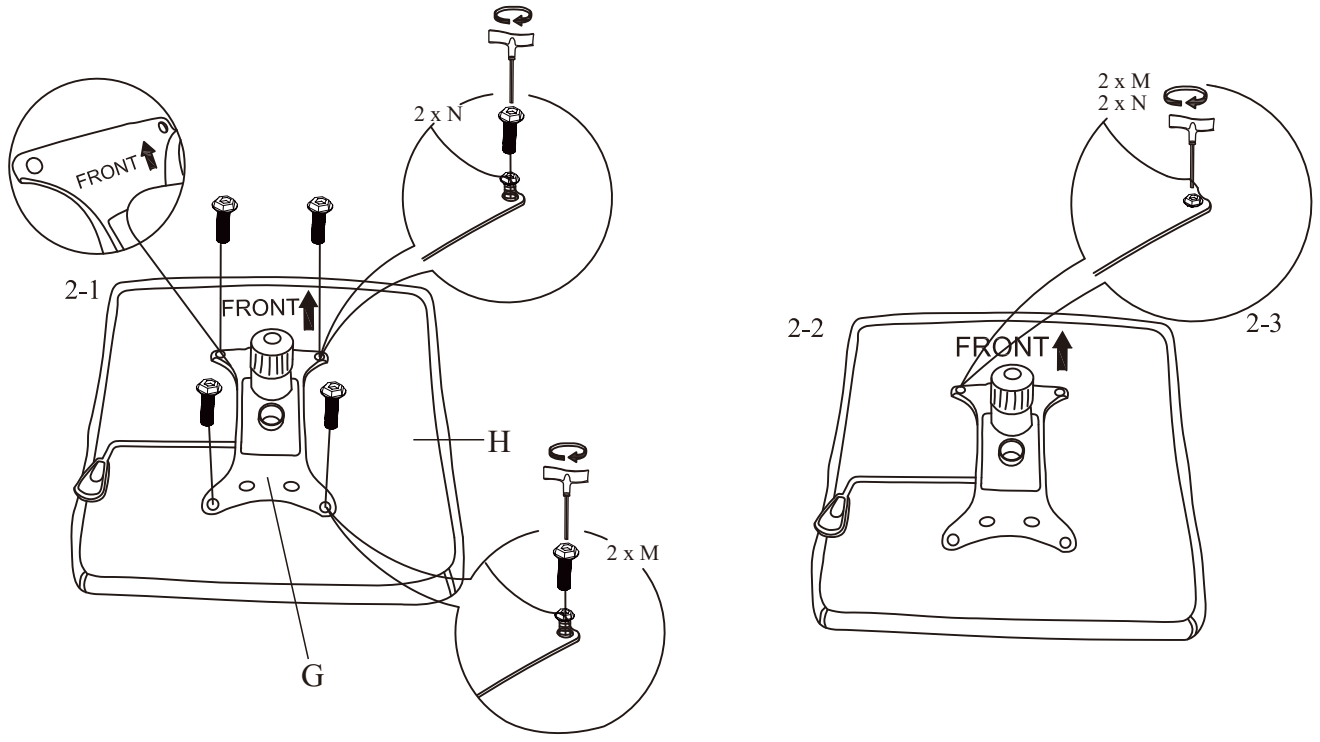
- Do not stand in this chair or use the chair as a step ladder use it as chair only.
- This chair is designed for one person to use at a time.
- This chair is designed for one person weighing up to 500lbs(226kgs).
- Do not use this chair unless all bolts, screws and knobs are firmly secured.
- Check all bolts,screws and knobs every 90days. Tighten if any are loose.
- Failure to follow these instructions may result in serious injury or death of yourself and people around you.
- Some of the part are heavy and/or has shape edge, please install it carefully to avoid hurt you and people around you.

If any parts are missing, broken, damaged or worn, stop using this chair until repairs are made and factory replacement parts are installed. You may obtain replacement parts by calling706-520-1087

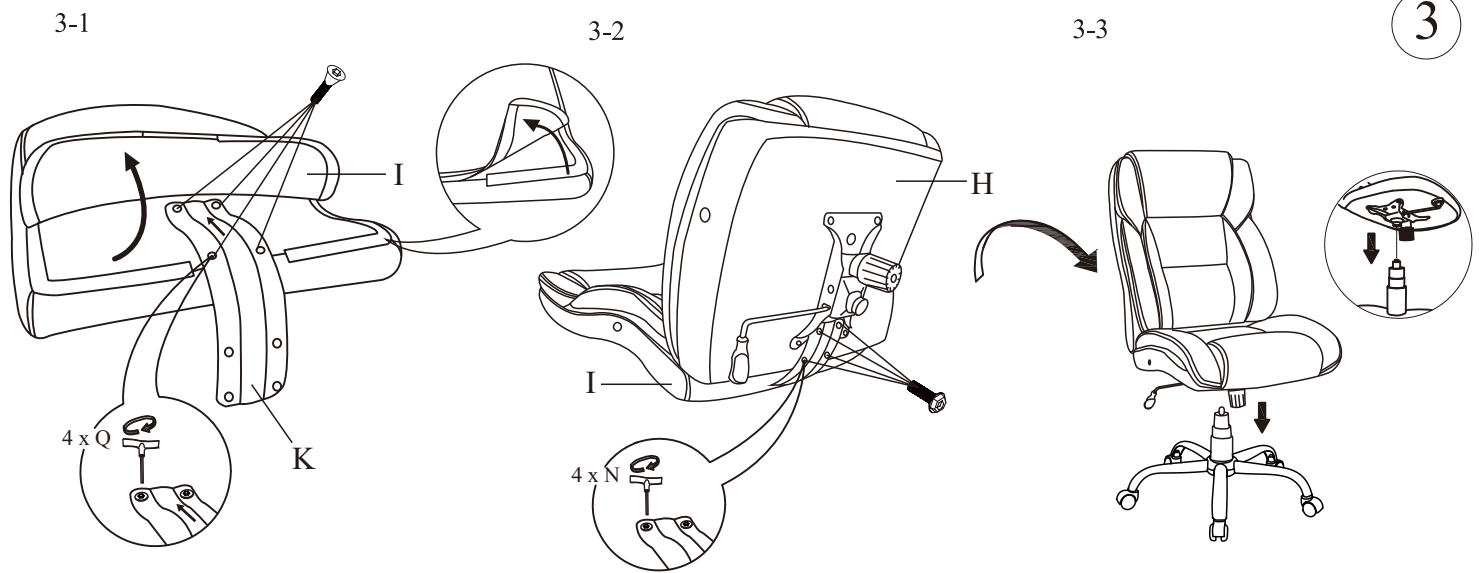
1



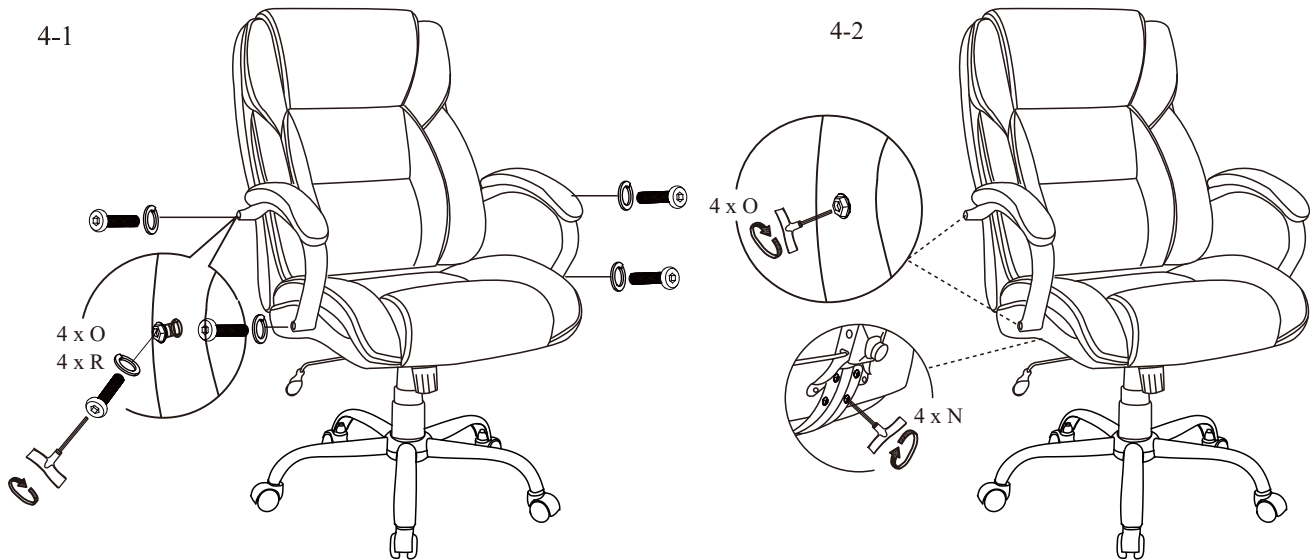
2



3



Please do not tight the back bar screws until all screws linded up.



Please do not tight the screw until all screw lined up with hole and try to tight it loosely initially in all screws then tight a little bit more in all screws do not overnight one screws that will make other screw hard to tight but tight all screw firmly in the end

