

PRESSURE WASHER LIMITED WARRANTY

This product is under warranty to the original retail consumer against defects in material and workmanship for a period of 1 (one) year and is a complete "bumper to bumper" warranty including the spray gun, the high pressure hose and all accessories from the date of purchase. The warranty is not transferable or assignable. This warranty covers replacement parts. This limited one year warranty applies only to products used in consumer applications and is void in rental or any commercial application. Reasonable care must be used in conformity with operation and maintenance instructions in the owner's manual. Failure to follow these instructions will void this warranty. This warranty gives you specific legal rights and you may also have other rights which vary from state to state.

WARRANTY RETURNS

Keep your original receipt of purchase in case of warranty claim. Any power washer or parts returned for a warranty claim must have a "RETURNED MERCHANDISE AUTHORIZATION (RMA) NUMBER." You must obtain an RMA NUMBER by calling A.R. North America, Inc. at 1-866-235-5112 Monday through Friday, 8 a.m. to 5 p.m. (CST) or e-mail info@arblueclean.com. Any return without an RMA NUMBER will be considered unauthorized and will be shipped back at the expense of the sender. Freight costs to the company for warranty work must be paid by the purchaser.

A.R. North America, Inc.
Attn: Power Washer Warranty Department
140 – 81st Avenue NE, Fridley, MN 55432
Phone: 1-866-235-5112
Fax: 1-866-331-2762
Email: info@arblueclean.com
Website: www.arblueclean.com

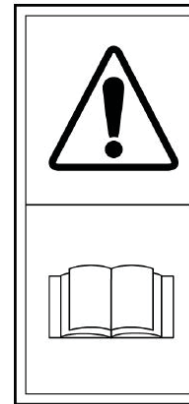
AR620 & AR630 Electric Pressure Washer



ASSEMBLY, CARE AND USE INSTRUCTIONS

READ CAREFULLY

IMPORTANT: RETAIN THESE
INSTRUCTIONS AND ATTACH RECEIPT
TO MANUAL FOR FUTURE REFERENCE.



Important Notice

Winter storage or long time storage. Drain all water out of the pump. Flush the pressure washer with a 50% antifreeze solution, and relieve the pressure. Flush the pressure washer before you use it again to remove the antifreeze.

Questions, problems, missing parts?

Before returning to your retailer, call our customer service department at 1-866-235-5112, 8 a.m. - 5:00 p.m., CST, Monday - Friday.
www.arblueclean.com

AR620/630_FN

ASSEMBLY INSTRUCTION

PRE-ASSEMBLY CHECKLIST

1. The pressure washer should be as close as possible to the water supply.
2. Locate the pressure washer on a solid, level surface with a gentle slope to prevent water from building up in the work area. Excess water can make surfaces slippery.
3. Position the unit so the operator has easy access to the pressure washer and its controls.
4. To prevent damage and excessive hose wear, locate the pressure washer so the hose does NOT extend across traffic areas. Make sure there are no kinks or twists in the hose.
5. Use extension cords of at least 12-3 gauge for lengths up to 50 feet or 10-3 gauge for lengths up to 100 feet. Check the extension cord to make sure it is not damaged or frayed. The outlet should have an amperage rating of 20 amps or greater and should have a Ground Fault Circuit Interrupter (GFCI).
6. Do not use the pressure washer outdoors if it is raining, and do not spray the motor or any of its connections.
7. Do not use chemicals or agents which are not compatible with the Buna-N and PVC (polyvinyl) or neoprene covering of the hose.
8. Do not run acids or hard caustics through the pump.
9. Check to determine if the water supply can exceed the output of the pump. The output of this unit is 2.1 gpm (gallons per minute), so the water supply must deliver at least 2.5 gpm.

Calculate gpm flow rate by running the water supply into a pail for one minute. Measure the gallons in the pail. If it is at least 2.5 gallons in the minute, your supply is adequate. Your water supply must be clean and free of debris. Use water with a temperature of less than 140° F.

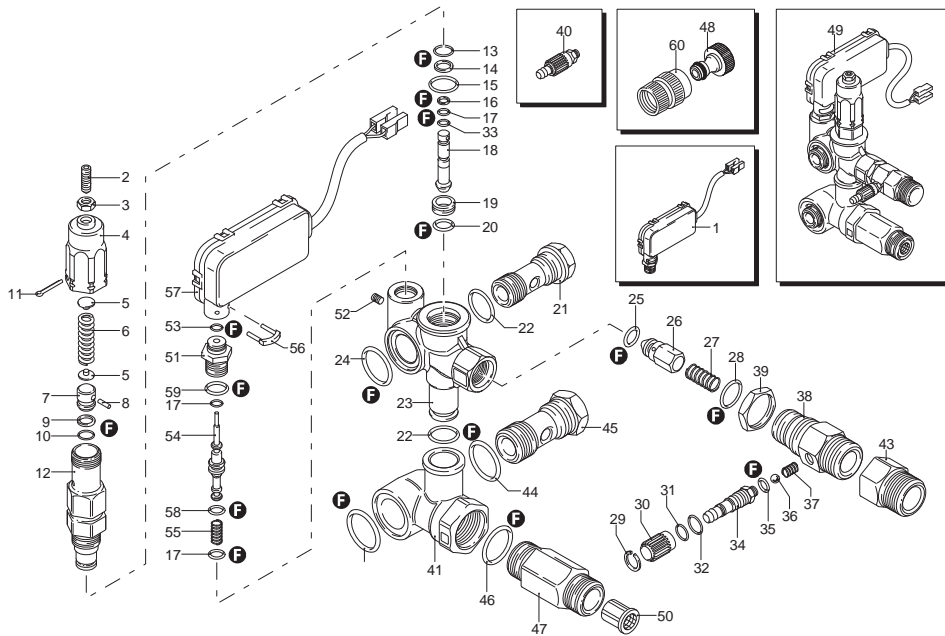
Pos	Code	Description	Qty	Pos	Code	Description	Qty
1	42654	TSS kit	1	32	800560	O-ring	1
2	392840	Screw	1	33	1120681	O-ring	1
3	1980300	Nut	1	34	1560650	Hose tail	1
4	2500540	Insert	1	35	480480	O-ring	1
5	1980220	Wobble plate	2	36	1250280	Ball	1
6	1271070	Spring	1	37	1560520	Spring	1
7	1080041	Piston	1	38	1540570	Fitting	1
8	1080070	Pin	1	39	1540300	Nut	1
9	1080401	Ring	1	40	1569206	IDR assembly	1
10	1080250	O-ring	1	41	1540280	Suction fitting	1
11	2500550	Split pin	1	42	1540630	O-ring	1
12	1980210	Piston guide	1	43	1122260	Fitting	1
13	740290	O-ring	1	44	880270	O-ring	1
14	800560	O-ring	1	45	2260420	Screw	1
15	880830	O-ring	1	46	480440	O-ring	1
16	1271170	Ring	1	47	1560900	Fitting	1
17	1080192	O-ring	3	48	1461470	Fitting	1
18	1271160	Piston	1	49	25263	Complete valve	1
19	2460420	Seat	1	50	1340260	Filter	1
20	1080250	O-ring	1	51	1540870	Plug	1
21	1540272	Screw	1	52	1981190	Screw	1
22	390080	O-ring	2	53	1260820	O-ring	1
23	1540660	Valve body	1	54	1540881	Piston	1
24	1140450	O-ring	1	55	1981320	Spring	1
25	1460430	O-ring	1	56	2022201	Fork	1
26	1540170	Shutter	1	57	2029787	TSS box assembly	1
27	1080091	Spring	1	58	660190	O-ring	1
28	394280	O-ring	1	59	880840	O-ring	1
29	1560660	Ring	1	60	40126	Fitting	1
30	1560680	Knob	1				
31	480560	O-ring	1				

Legend	
For ■	For ▼
AR630TSS	AR630TSS-Hot

Kits			
Pos	Code	Description	Qty
F	42451	Gasket kit	1

AR630TSS / AR630TSS-Hot

UNLOADER



ASSEMBLY INSTRUCTION (CONT)

ASSEMBLING

1. Connect the high pressure hose to the pressure washer with the twist fast coupler and tighten securely. Fasten wand and gun together and connect gun/wand to high pressure hose.



Tighten all connections and replace worn parts before starting the machine. Sudden release of high pressure streams may result if connections detach during use. This can cause serious injury. Never disconnect any part of the unit while the machine is running or before relieving system pressure, it is dangerous. Seek medical attention if an injury ever occurs.

2. Remove the red plug from the pump crankcase and install the black dipstick. Always check that the oil level is full before operating.
3. Oil level can be checked in two places.
4. First, on back side of pump sight glass, level should be half way.
5. Second, on dip stick, oil should read between the indentation on the dip stick.

OPERATING INSTRUCTIONS

BEFORE STARTING THE PRESSURE WASHER

1. Read all safety instructions throughout the manual.
2. Place unit on dry, firm, level ground for optimum lubrication of pump.
3. Check oil levels prior to each use.
4. Tighten all hoses and connections. Check parts and replace if needed.
5. When the unit is attached to a pressure main and the nozzle is in the low pressure setting, purge air from system by squeezing gun trigger before starting machine. Let water run until there is a steady stream of water coming out of the nozzle.

OPERATING INSTRUCTIONS (CONT)

STARTING THE PRESSURE WASHER

1. Turn on the water supply to the proper gpm flow rate.
2. Plug power cord into properly grounded outlet.
3. Turn nozzle to low pressure and squeeze trigger.
4. Turn "ON/OFF" switch to the "ON" position and wait until a constant stream of water comes out. Adjust nozzle sleeves to achieve proper pressure and coverage area.

DURING OPERATION

1. Observe all safety instructions through this manual.
2. Do Not allow the machine to run with the wand not squeezed, "OFF", for more than 2 minutes (30 seconds with the water temperature above 80° F).



When the wand trigger is released the pump does not stop pumping. Water is routed through a bypass circuit which builds up heat. If the water temperature becomes too high, damage to the seals, packings and other parts may result.

3. Check pump, connections and hose for water and oil leaks. Replace worn parts.

STOPPING THE PRESSURE WASHER

1. Rinse and close the downstream chemical injector.
2. Turn the motor power switch to the "OFF" position.
3. Turn off water supply.
4. Squeeze the trigger on the wand to relieve the system water pressure and drain as much water as possible.

Pos	Code	Description	Qty	Pos	Code	Description	Qty
1	1981780	Knob	1	32	2260420	Screw	○● 1
2	1980470	Screw	1	33	1540360	Screw	□ 1
3	1980300	Nut	1	33	40126	Fitting	1
4	1980390	Insert	2	34	1260660	filter	1
5	1980220	Wobble plate	1	35	1270940	Fitting	1
6	1271070	Spring	1	36	1271170	Ring	1
7	1080041	Piston	1	37	2980	Complete valve	○ 1
8	1080401	Ring	1	37	2892	Complete valve	●□ 1
9	1080250	O-ring	1	38	480480	O-ring	3
10	1080070	Pin	2	39	1260670	Fitting	1
11	1980210	Piston guide	1	40	720030	O-ring	1
12	880830	O-ring	1	41	1262940	Bushing	1
13	740290	O-ring	1	42	1250270	Spring	1
14	800560	O-ring	1	43	1250280	Ball	1
15	1080190	O-ring	3	44	880840	O-ring	1
16	1271160	Piston	1	45	1264090	Spring	1
17	1080121	Seat	1	46	1269041	Injector	1
18	1260570	Washer	1	47	1264080	Plug	1
19	3990080	O-ring	1	48	1269010	Knob	1
20	1540272	Screw	1	49	1981770	Plug	1
21	1270790	Plate	1	50	1279211	Combiset assembly	○ 1
22	395370	Washer	2	50	1279238	Combiset assembly	●□ 1
23	395270	Screw	2	51	1460430	O-ring	1
24	1260530	Cover	1	52	1540170	Shutter	1
25	1260520	Indicator arm	1	53	1080091	Spring	1
26	1270080	Valve body	1	54	394280	O-ring	1
27	770140	O-ring	2	55	1200690	O-ring	1
28	1180140	O-ring	1	56	1270091	Injector	1
29	1260540	Suction fitting	□ 1	57	1260820	O-ring	1
30	1260560	Washer	1	58	1264070	Ring	1
31	880270	O-ring	1	59	1264060	Piston	1

Legend

For ○
AR620

For ●
AR630

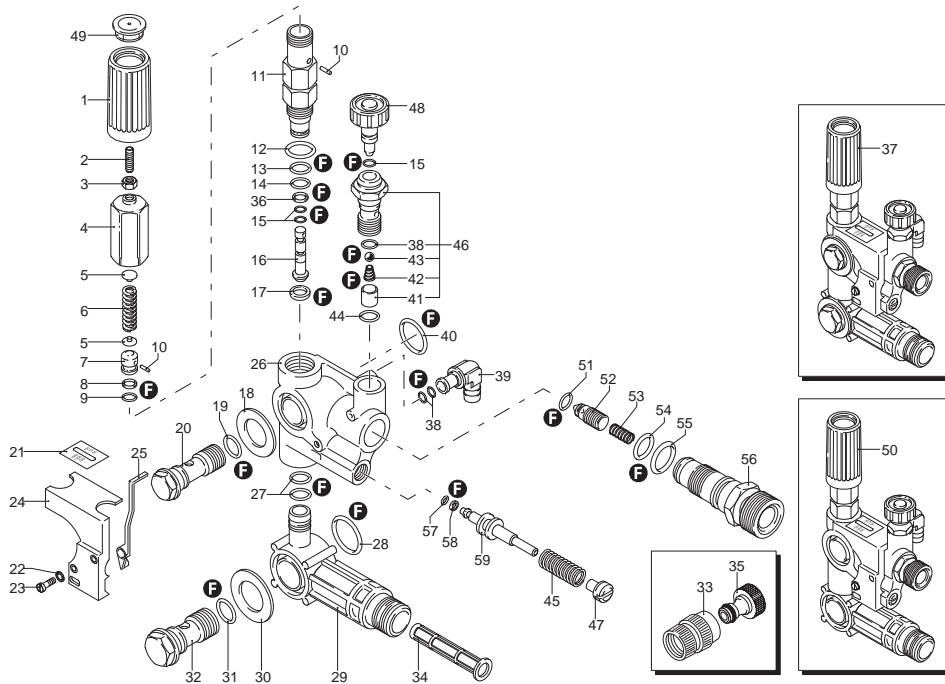
For □
AR630-Hot

Kits

Pos	Code	Description	Qty
F	2715	Gasket kit	1

AR620 / AR630 / AR630-Hot

UNLOADER



OPERATING INSTRUCTIONS (CONT)

5. Spray the backside of the nozzle with a lubricant and work the nozzle back and forth from high pressure to low pressure. This will help keep the nozzle from sticking.
6. Follow this procedure each time the machine is stopped. Having the nozzle set at low pressure and squeezing the trigger on the gun when you start the unit will reduce the startup load of the unit.

STARTING THE MACHINE AFTER A PERIOD OF NON-USE

Long periods of non-use can cause calcium and iron deposits inside the pump. Starting the machine could cause damage to the pump. Insert the allen key provided with the unit through the hole in the motor end housing and rotate the motor one revolution clockwise and counter-clockwise. Remove the key and start the motor. It should start up easily.

MAINTENANCE

Change oil after the first 50 hours of use. Use a SAE20 or 30 non-detergent oil. After that, change oil every 200 hours, once a year or when it looks milky, more frequently if used in demanding environments. Changing oil is one of the most important and least expensive maintenance items, it will prolong the life of your pressure washer.

ROUTINE CHECKS - DO THESE BEFORE EVERY USE

1. Check water inlet screens for signs of debris.
2. Check nozzle for debris and signs of extensive wear. Worn nozzle will result in poor performance. Only check nozzle with the motor turned "OFF" and the pressure relieved from the system!
3. Check all fittings and connections for leaks and worn areas.

MAINTENANCE (CONT)

CLEANING TIPS

The gun nozzle supplied with the pressure washer provides optimum cleaning for universal cleaning applications if used properly.

Cleaning agents are most effective when the surface is rinsed first to loosen dirt. After pre-rinsing to loosen dirt, then clean with detergent.

Detergent should be applied from the bottom to the top of the washing area. Apply detergent and allow the detergent to react with the dirt, then rinse from the top to the bottom. This detergent applying and rinsing technique will help to avoid streaks and skips in the washing area.

Never use more detergent than is necessary to clean the surface.

Always follow directions supplied by the detergent manufacturer on the container.

For best spraying results, hold the gun 6 – 12” away from the washing surface and use long, slow deliberate side to side strokes, similar to using a paint sprayer. This technique will provide the most effective cleaning impact and minimize streaks and skips in the cleaning process. Waving the spray gun aimlessly across the surface wastes water and expensive detergent and prolongs the cleaning process.

If the pressure washer is used to apply wax, the gun should be held further from the surface to optimize the “misting” effect when applying the wax. For best results, follow the directions supplied by the wax manufacturer.

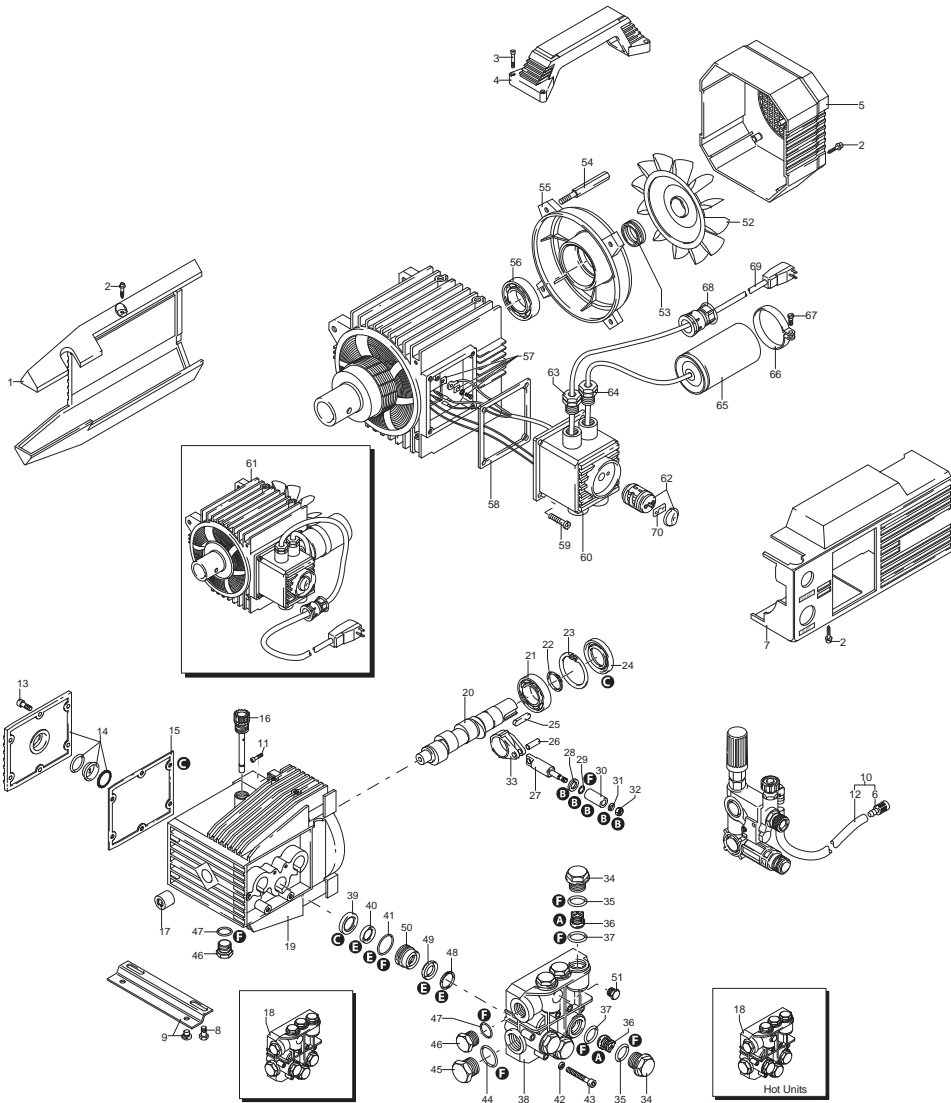
GUN, WAND AND NOZZLE

Hold the gun/wand in the normal operating position. Turn the nozzle sleeve clockwise for a fan spray and counterclockwise for a stream. (Pull the nozzle sleeve forward for high pressure while pushing the sleeve away from the gun for low pressure). After shutting down the unit and draining the hose, spray a lubricant, such as WD40, on the backside of the nozzle and work the nozzle back and forth from high to low pressure. This will help prevent the nozzle from sticking. Examine nozzle tip for blockage only with pressure washer “OFF” and pressure relieved from systems.

Pos	Code	Description	Qty	Pos	Code	Description	Qty
1	1260279	Casing	1	47	740290	O-ring	○●■ 2
2	1261551	Screw	8		740291	O-ring	▽□ 2
3	180030	Screw	4	48	1260140	Ring	○ 3
4	1260710	Handle	1		1520120	Ring	▽■□ 1
5	1261760	Fan cowling	1	49	1271650	Water seal	○●■ 3
6	1341030	Filter	1		1260131	Water seal	▽ 3
7	1264629	Casing	○□ 1	50	1260151	Piston guide	3
	1272810	Blue Casing	▽■ 1	51	620301	Plug	▽■□ 1
8	1260470	Screw	4	52	1260301	Fan	○ 1
9	1260830	Foot	2		1260300	Fan	▽■□ 1
10	1269115	Hose & Filter Assembly	1	53	1260970	Seal	1
11	1260780	Screw	4	54	1260360	Stud bolt	4
12	1262790	Detergent hose	1	55	1260960	Shield	1
13	1260760	Screw	6	56	1260950	Bearing	1
14	1269101	Cover	1	57	1269100	Clamp	1
15	1260040	Oil seal	1	58	1260400	Gasket	1
16	1260480	Plug	1	59	1261560	Screw	4
17	1260050	Bushing	1		1261410	Box	○□ 1
18	1269216	Head assembly	○ 1	60	1260341	Box	▽■ 1
	1269251	Head assembly	■ 1		4747	Motor	○□ 1
	1269221	Head assembly	□ 1	61	44545	Motor	▽■ 1
	1269306	Head assembly	▽ 1	62	1261240	Switch	○□ 1
19	1260010	Pump body	1		1272030	Switch	▽■ 1
20	1260190	Shaft	1	63	1271950	Cable retainer	1
21	1320370	Bearing	1	64	1269090	Cable retainer	1
22	1260770	Ring	1	65	1263550	Capacitor	1
23	1260790	Ring	1	66	1267280	Clamp	1
24	1260750	Ring	1	67	1271880	Screw	1
25	1380520	Key	1	68	1262370	Orifice	1
26	1260080	Pin	3	69	1261820	Cable	1
27	1260070	Piston	3	70	1265180	Gasket	●□ 1
28	1260091	Plate	3				
29	480480	O-ring	3				
30	1260120	Piston	3				
31	1260100	Washer	3				
32	1260110	Nut	3				
33	1260060	Connecting-rod	3				
34	1260162	Plug	6				
35	960160	O-ring	○●■ 6				
	960191	O-ring	▽□ 6				
36	1269050	Complete valve	6				
37	880830	O-ring	○●■ 6				
	880831	O-ring	▽ 6				
38	1260020	Head	○ 1				
	1320023	Head	■ 1				
	1320022	Head	▽□ 1				
39	1260460	Oil seal	3				
40	1260440	Water seal	○●■ 3				
	1260441	Water seal	▽□ 3				
41	1260420	O-ring	○●■ 3				
	1260421	O-ring	▽□ 3				
42	1381550	Washer	6				
43	680570	Screw	6				
44	180101	O-ring	○●■ 1				
	180102	O-ring	▽□ 1				
45	820361	Plug	1				
46	1980740	Plug	2				

Legend			
For ○	For ●	For □	
AR620	AR630	AR630-Hot	
For ■	For ▽		
AR630TSS	AR630TSS-Hot		

Kits			
Pos	Code	Description	Qty
A	1864	Valve kit	1
B	2628	Piston kit	1
C	1865	Oil seal kit	1
E	1866	Water seal kit	1
F	2040	Gasket kit	1



SETTING NOZZLE PRESSURE / CHEMICAL INJECTOR

High Pressure

1. For high pressure pull back on nozzle. Make sure to keep all parts of hand away from out coming water.

Diagram A



Low Pressure

2. For low pressure and chemical suction push the nozzle forward. Keep all parts of hand away from out coming water.

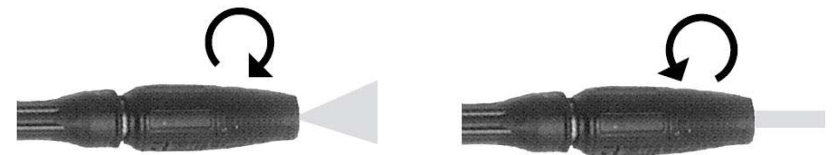
Diagram B



Fan Spray

3. For adjusting the water spray pattern turn nozzle clockwise for wide spray fan pattern and counter clockwise for narrow stream spray pattern.

Diagram C



USING THE SOAP INJECTOR

Your pressure washer is supplied with a downstream low pressure soap/chemical injector. Soap is added after the water flows through the pump. The injector is used add liquids to the water. The injector works only on low pressure.

The draw soap/chemical into the pressure washer, insert the filter end of the pick-up hose into the soap/chemical. Adjust the nozzle to the low pressure position. Do Not use powders, granular, high viscosity detergents or acidic based detergents/chemicals in the injector.

To shutdown the injector, remove pick-up hose and filter from detergent/chemical tank and place it in a container of clear water. Run water through the entire system to wash out the chemical you were using.

STORING THE PRESSURE WASHER

Severe damage could occur by water freezing inside the components. To prevent costly repairs, follow these steps:

1. Make sure the unit is "OFF", water supply is disconnected and system pressure has been relieved.
2. Install a suction hose from the pump inlet (garden hose fitting) into a gallon of NON-TOXIC RV anti-freeze. Following operating instructions start the machine and squeeze trigger on the spray gun allowing the pump to draw anti-freeze through the entire system. Once the anti-freeze appears at the end of the wand, turn the machine "OFF".
3. Squeeze gun trigger to relieve pressure from system. Disconnect the high pressure hose from the high pressure outlet and put the hose, gun/wand and owners manual in a secure place to prevent unauthorized people from using the machine.
4. When preparing the high pressure hose assembly and water supply to the unit, turn the water on and squeeze the trigger on the spray gun to send water through the system. Dispose of the anti-freeze/ water solution safely where it will not be harmful to the environment, people or animals.

TROUBLESHOOTING

TROUBLESHOOTING	
Low Pressure Causes	Solutions
Plugged nozzle.	Clean and check for blockage.
Insufficient flow of water to the pump.	Increase water flow to the pump.
Plugged inlet screen.	Pull out and clean screen carefully.
Using restrictive supply hose.	Use larger diameter supply hose.
Surging Pressure Causes	Solutions
Restricted supply by under-sized fittings or inlet.	Use larger fittings and clean the inlet screen.
Insufficient flow of water to the pump.	Increase water flow to the pump.
Air trapped in the pump head.	Set nozzle on low pressure setting, squeeze gun trigger before starting machine. Start engine and run water until air is purged out of the system.
Soap injector not working Causes	Solutions
Adjustable nozzle set on high pressure mode.	Set nozzle to low pressure. Injector only works on low pressure setting.
Back pressure from the addition of extra hose.	Do not use additional high pressure hose.
Detergent adjustment knob turned off.	Turn detergent adjustment knob counter-clockwise to open.
Plugged injector valve.	Check and clean the injector.