

# How to Add a Camera Into Blue Iris 5




Michael M.


September 25, 2019 02:21

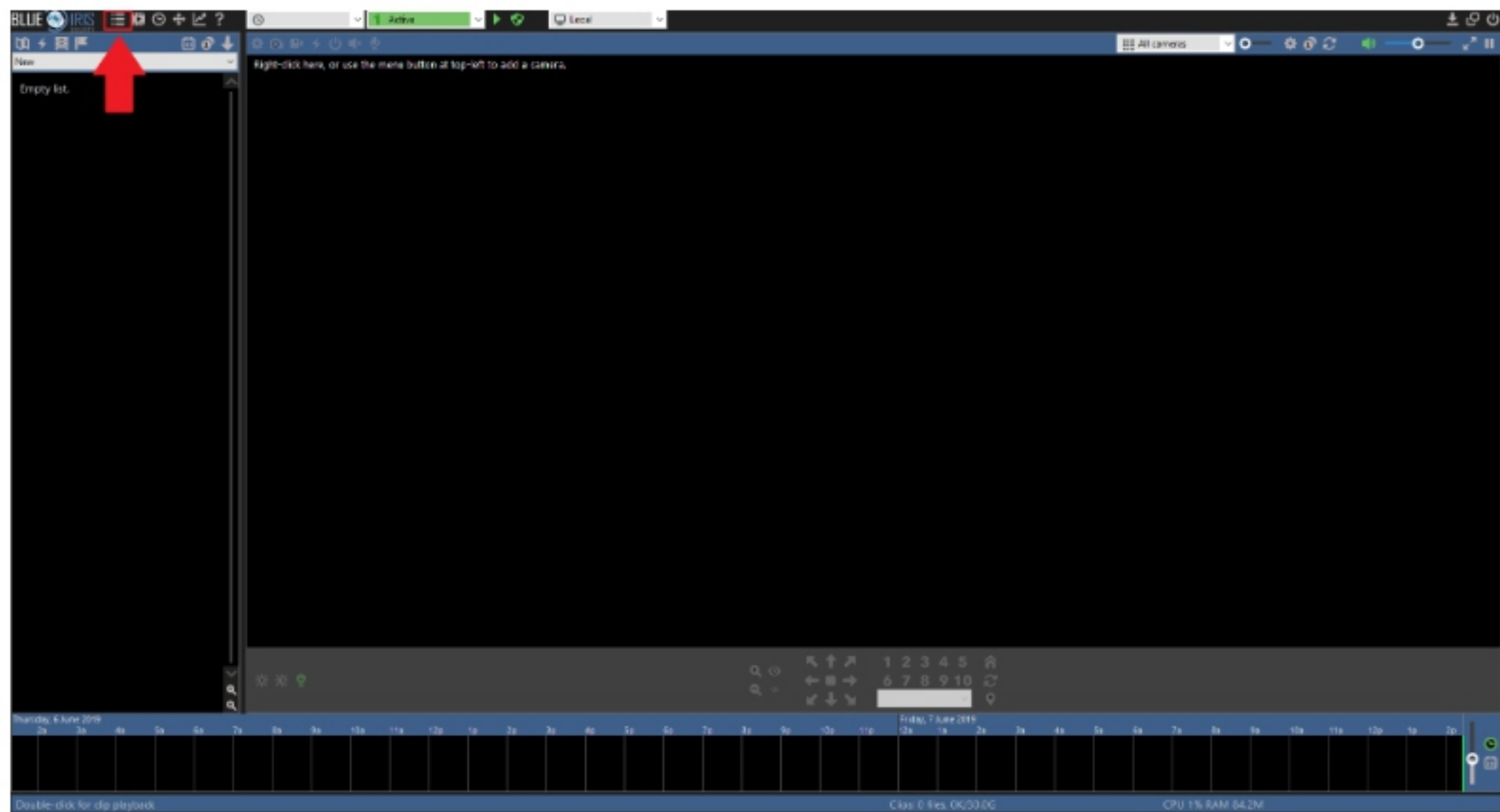
Follow

## How to Add a Camera Into Blue Iris 5

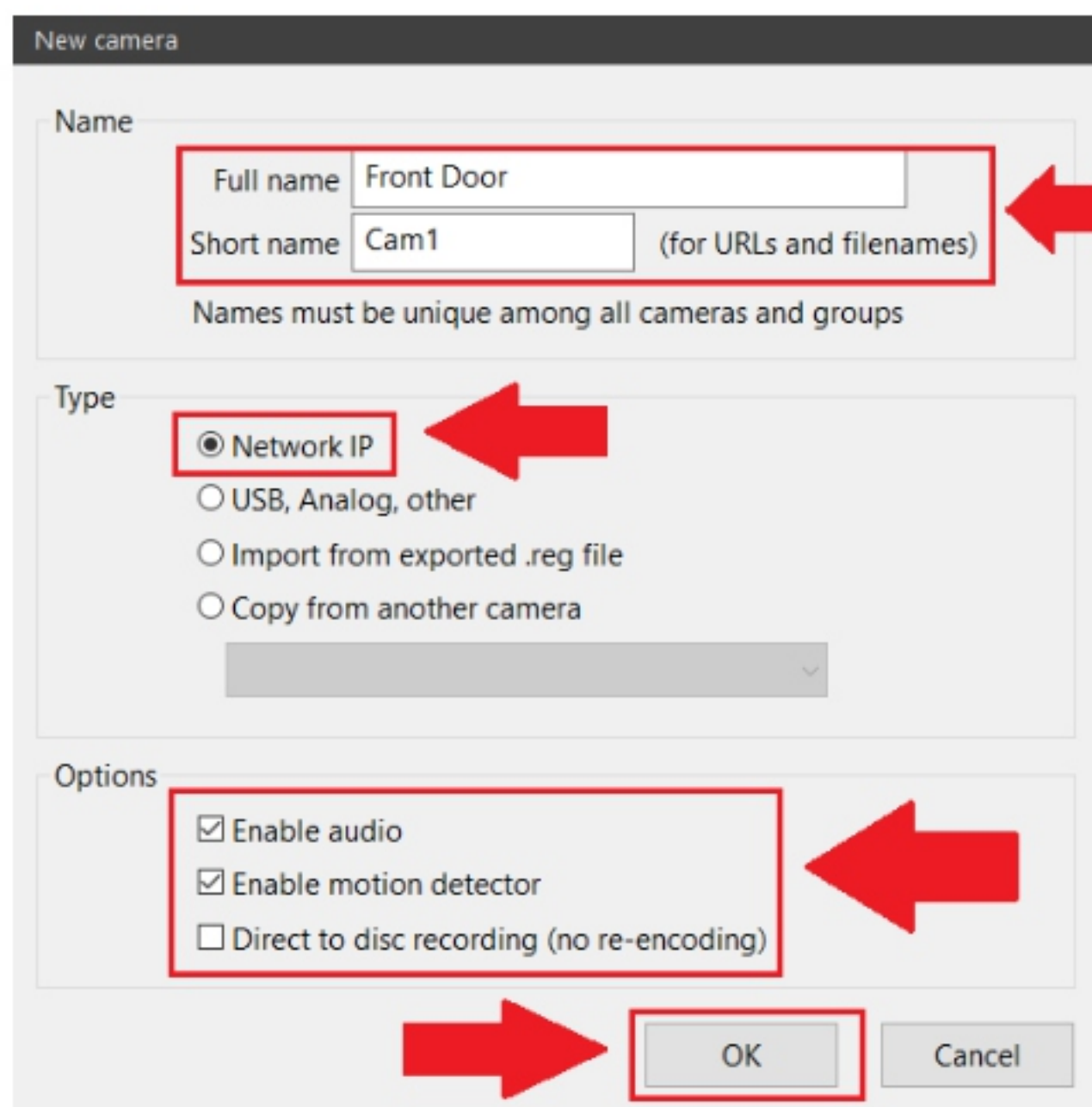
There are 2 ways to add a camera into Blue Iris 5. You can right click on the main menu, or click on the settings menu (  ) in the top-left corner of the interface.

### Adding a Camera

To begin, right-click on the main interface or click on the settings menu (  ) to access the "New camera" menu.



In the new camera menu, give your camera a name, a short name (for URLs and filenames), choose a type, which in this case will be a Network IP, and enable any options such as, enabling audio, motion detection, etc. Click OK to continue.



The screenshot shows a 'New camera' configuration window with three main sections: Name, Type, and Options. Red arrows highlight the following elements:

- Name section:** A red box encloses the 'Full name' field (containing 'Front Door') and the 'Short name' field (containing 'Cam1'). A red arrow points to this box from the right. Below the fields is the text: 'Names must be unique among all cameras and groups'.
- Type section:** The 'Network IP' radio button is selected and highlighted with a red box. A red arrow points to this box from the right.
- Options section:** A red box encloses the 'Enable audio' and 'Enable motion detector' checkboxes, both of which are checked. A red arrow points to this box from the right.
- Buttons:** A red arrow points to the 'OK' button at the bottom right of the window.

This will open two windows. The top window will be Network IP Camera Configuration. Enter the address of your camera (IP Domain or DDNS as well as RTSP address) and click on the **Find/Inspect...** button on the right to confirm. Enter the username and password, select the make as **Amcrest**, select the model of your device (ProHD and HDseries cameras as **"ProHD 1080p RTSP/HTTP"**), and specify the RTSP and ONVIF ports.

# Network IP camera configuration

## Address

http:// 10.0.25.229:80 Find/inspect...  
User admin Password Blank address to search for cameras

Make Amcrest

Model ProHD RTSP/HTTP

Media/video/RTSP port 554

Discovery/ONVIF port 80

## Video

Path /cam/realmonitor

Params channel={CAMNO}&subtype=0&authbasic={AUTH64}

Camera 1

## Network options

Receive buffer (MB) 6.0

☐ Use RTP/UDP ports: 7000

☒ Send RTSP keep-alives

☒ Use RTSP/stream timecode

☐ Skip initial HTTP DNS and reachability tests

☐ Decoder compatibility mode

☐ Get events with PullPointSubscription

## Audio

Path

Format 64 kbps G.711 u-law

☐ Setup RTSP back-channel for talk support (PCM-U format)

OK

Cancel

Help

**Note:** If you choose the other option profile, "ProHD/IP2/3/4/4M Mainstream RTSP" features such as PTZ or other related features may not be accessible. Please use ProHD 1080P RTSP/HTTP in the **Model** field.

After filling in the information required, click OK. The second window will appear titled New Camera. Here you can make many adjustments to the way you want Blue Iris to configure your camera.

New camera

Webcast

Schedule

PTZ/Control

Watchdog

General

Video

Audio

Trigger

Record

Alerts

Post

Device type

☐ Screen capture

DirectDraw Blits

Primary

☐ USB, Firewire, or Analog

☒ Network IP

<http://10.0.25.229>

Configure...

☐ Broadcast from client app

☐ Designated group master

Input

Advanced...

Image format

Size: ?

Max. rate: 1000000 [10.00 fps]

☐ Anamorphic (force size)

Delay (msec): 0

☐ Flip left/right

Rotate: No

☐ Area of interest (AOI)

Edit...

De-interlace: None

☒ Enable overlays

Edit...

360: No

Hardware accelerated decode: Default

☐ Limit decoding unless required

GPU: any

☐ Also BVR

OK

Cancel

Help



The page is defaulted to the Video tab. The options available for adjustment are Image Format and Frame Rate, PTZ Controls, Recording through Blue Iris, Alerts through Blue Iris, and other features. Once you have finished adjusting any necessary settings, click on OK to add the camera. The live view screen of your camera will show in the interface.

