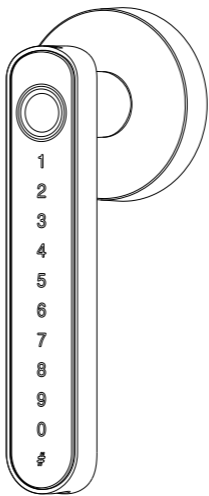


Fingerprint Door Lock

YL-T8



USER MANUAL

CATALOG

| | |
|----------------------------------|---|
| FAQs..... | 1 |
| Technical Specification..... | 2 |
| Package Included..... | 3 |
| Installation Instruction..... | 4 |
| Setup/Operate Instruction..... | 6 |
| 3 Color Indicator Lights..... | 9 |
| Tuya Smart APP Instructions..... | 9 |

1. FAQs

Question 1: How to install the door lock, any installation guide or video?

Answer: Yeah, there is an installation guide(4.3) on this manual and an installation video on the AMZ product page.

Question 2: Why other unregistered fingerprints can also unlock the lock?

Answer: Before the first fingerprint is registered successfully, it is the experience mode, any fingerprint can unlock the lock in experience mode. Please check if the first fingerprint is registered successfully.

Question 3: Why my fingerprints cannot be registered successfully?

Answer: One fingerprint needs to be collected 5 times that will be registered successfully. So you should enter the same fingerprint 5 times instead of entering 5 different fingerprints when registering a fingerprint.

Question 4: Why does the lock sometimes sleep after entering the setup command?

Answer: Because it cannot be set up after unlocking, it may be unlocked by touching the fingerprint reading area, so you can wake up the lock by touching the numeric keypad and then entering the command to setup.

2. Technical Specification

| NO. | Item | Specification |
|-----|----------------------------|---------------------------------|
| 1 | Model | T8 |
| 2 | Basic Function | Fingerprint, Passcode, APP, Key |
| 3 | Type of Fingerprint Sensor | Semiconductor Module |
| 4 | Fingerprint Capacity | 50 Fingerprints |
| 5 | False Recognition Rate | <0.001% |
| 6 | Rejection Rate | <1% |
| 7 | Contrast Speed | 1:N<7s/Fingerprint |
| 8 | Keypad | Capacitive Touch Button |
| 9 | PIN Code Capacity | 100 Passcodes |
| 10 | Opening Records | <25000 records |
| 11 | APP | Tuya Smart |
| 12 | Voice Prompts | Yes |
| 13 | Power Supply Mode | 4 AAA Alkaline Batteries |
| 14 | Emergency Power Supply | 5V Micro USB Power Supply |
| 15 | Low Battery Reminder | Yes |
| 16 | Dynamic Current | 250ma (Max) |
| 17 | Static Current | 70ua |
| 18 | Working Temperature | 68°F - 113°F |

3. Package Included

| NO. | Content |
|-----|-------------------------|
| A | 1 x Front Handle |
| B | 1 x Back Handle |
| C | 1 x Lock Latch |
| D | 1 x Strike Plate |
| E | 1 x Strike Hole Cover |
| F | 1 x Spindle |
| G | 2 x Connecting Pipe |
| H | 2 x Mechanical Keys |
| I | 4 x Wooden Screws |
| J | 2 x M4 Screws |
| K | 1 x Battery Cover Screw |
| L | 1 x User Manual |

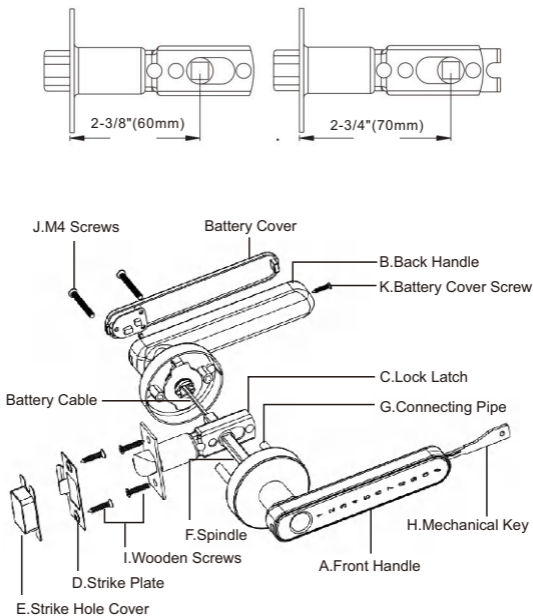


4. Installation Instruction

4.1 Confirmation before Installation

Door Thickness: 1-3/8" to 2-1/8" (35mm -55mm)

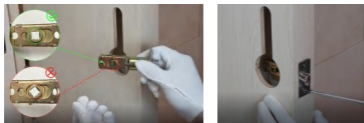
4.2 Accessories Installation Drawing



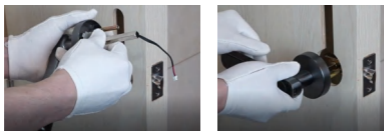
4.3 Installation Guide

Step 1. Install the Strike Hole Cover[E] and Strike Plate[D] with 2 Wooden Screws[I]. (Your original Strike Hole Cover and Strike Plate could be kept if it is compatible with the latch)

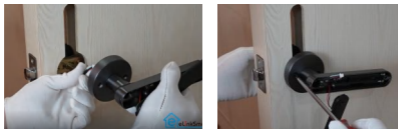
Step 2. Install the Lock Latch[C] (Latch can be adjusted between 2-3/8"(60mm) and 2-3/4"(70mm), make sure the spindle hole is squarely straight), then fix the Lock Latch with 2 Wooden Screws[I].



Step 3. Install the Front Handle[A]. Tighten and Fix the 2 Connecting Pipes[G]. Then route the Battery Cable through the Square Spindle [F], insert the Battery Cable and Square Spindle into the Lock Latch hole, and then fix the Front Handle.



Step 4. Install the Rear Handle[B]. Unscrew the Battery Cover Screw[K] on the Back Handle to open the battery cover, then route the Battery Cable through the Back Handle, Fix the Back Handle with 2 M4 Screws[J].



Step 5. Connect the Battery Cable and install 4 AAA Alkaline Batteries(not included), then install the Battery Cover to the Back Handle and fix it with the Battery Cover Screw[K].



Step 6. Check if the door lock can be used normally.

5. Setup/Operate Instruction

5.1 Setup/Operate Instructions

- 1) The first first 3 fingerprint users and the 3 passcode users registered after the machine is initialized are the administrators.
- 2) When the fingerprint is not entered, any fingerprint or the initial passcode "123456" can be unlocked. After registering the fingerprint or passcode, the unregistered fingerprints and passcodes will not be able to unlock.
- 3) The fingerprint lock can enter up to 50 fingerprints and 100 unlock passcodes.
- 4) After the fingerprint lock is restored to the factory setting, all registered fingerprints and passcodes will be deleted.

5.2 Register a Fingerprint

- 1) Touching the numeric keypad to wake up the code area.
- 2) Press the "1" + "#" key, the green light on and the voice prompts "Please verify the administrator".
- 3) Authenticate using admin fingerprint or passcode. If no fingerprint or passcode has been registered, use any fingerprint or the initial passcode "123456" to verify.

4) After successful verification, the voice prompts "Please start entry". Place your same finger 5 times at the fingerprint reader at different angles.

5) The green light will be on and the voice prompts "Entry is successful" if the Fingerprint is registered successfully.

5.3 Setup a Passcode

1) Touching the numeric keypad to wake up the code area.

2) Press the "1" + "#" key, the green light on and the voice prompts "Please verify the administrator".

3) Authenticate using admin fingerprint or passcode. If no fingerprint or passcode has been registered, use any fingerprint or the initial passcode "123456" to verify.

4) After successful verification, the voice prompts "Please start entry". Enter the passcode you want to set (support 6 to 12 digits password length) and press the "#" key to end. The passcode entry needs to be entered twice.

5) The voice prompts "Passcode set successfully", and a Passcode is successfully set up.

5.4 Restore Factory Default Settings

1) Touching the numeric keypad to wake up the code area.

2) Press the "888" + "#" key, the red light will be on and the voice prompts "Please verify administrator".

3) Place admin fingerprint or enter admin passcode to verify.

4) The green light will be on and the voice prompt "Restore Factory Default Settings Successful".

5.5 Forced Factory Reset

1) Press and hold the reset button on the rear handle (the small hole next to the button) for 8 seconds, the light flashes in red, release it,

the light turns green, and the voice prompts "Factory settings restored successfully", Press and hold the reset button on the rear handle (the small hole next to the button) for 8 seconds, the light flashes in red, release it, the light turns green, and the voice prompts "Factory settings restored successfully", all registered fingerprints and passcodes will be deleted.

5.6 Free Passage and Auto Lock Mode Switch

1) Turn On the Free Passage Mode

Press the Free Passage Mode button on the Rear Handle.

2) Turn On the Auto Lock Mode

Press the Free Passage Mode button on the Rear Handle again.

5.7 Low Battery Reminder

When the battery level is lower than 20%, the red light will flash quickly to remind you.

5.8 Anti-peep Passcode Unlocking

Enter random digits before or after your real passcode to confuse prying eyes. The total length of the entered passcode cannot be greater than 12 digits.

5.9 Accessibility

Long press the "#" key for 3 seconds to exit the menu and enter the off-screen sleep state.

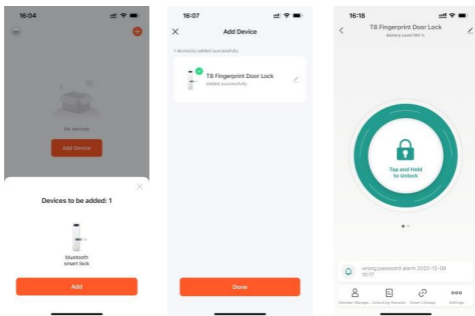
6. 3 Color Indicator Lights

| Operating | Red Light | Green Light | Blue Light |
|----------------------------------|-----------------------|-------------|--|
| Register a Fingerprint | Failure | Successful | 1. Always on, waiting for administrator verification. 2. Flashing, fingerprint registration status. |
| Setup a Passcode | Failure | Successful | |
| Restore Factory Default Settings | Failure | Successful | |
| Fingerprint Unlock | Failure | Successful | |
| Passcode Unlock | Failure | Successful | |
| Low Battery Reminder | 5 Consecutive Flashes | | |

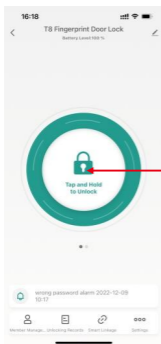
7. Tuya Smart APP Instructions

7.1 Download and Connect to APP

- 1) Download and install the [Tuya Smart] APP from APP Store (iOS) / Google Play (Android).
- 2) Open the APP and follow the prompts to register and log in.
- 3) Touching the numeric keypad to wake up the Lock and Connect to APP.

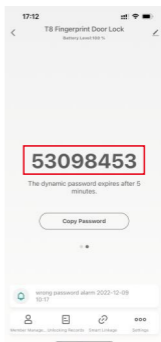
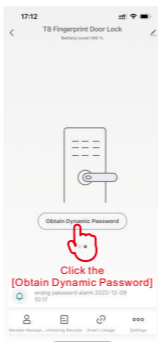
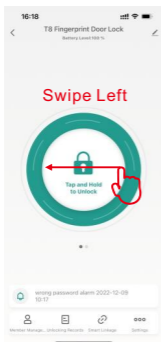


7.2 APP Unlock



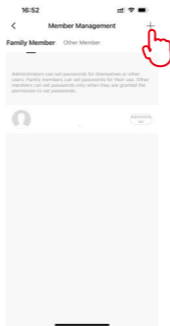
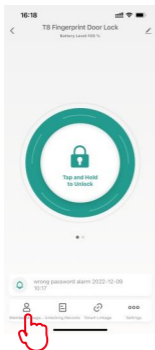
Tap and hold the icon to unlock

7.3 Obtain Dynamic Passcode



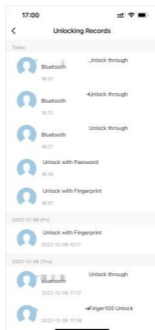
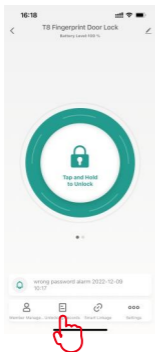
7.4 Member Management

Adding or Removing someone's fingerprint or passcode.



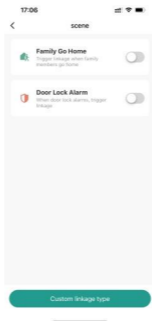
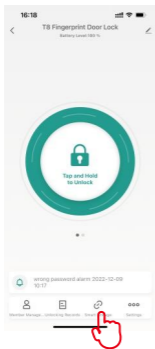
7.5 Unlocking Records

Viewing all real-time unlock records.



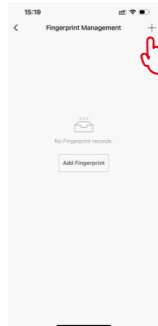
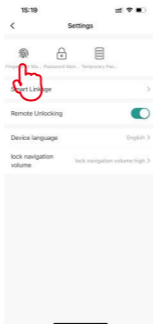
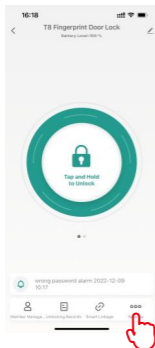
7.6 Smart Linkage

- 1) Family members go home reminding.
- 2) Fingerprint and Passcode input error warning.

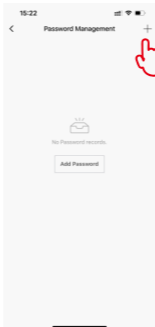
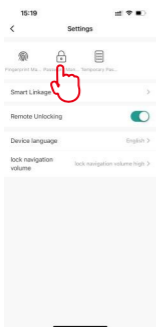


7.7 Settings

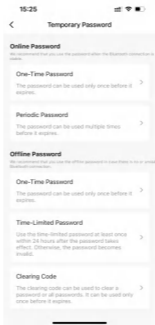
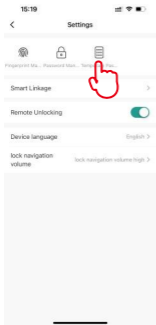
- 1) Fingerprint Management, add or delete a fingerprint.



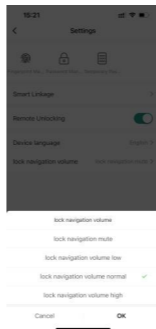
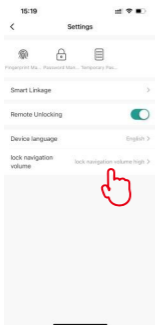
2) Password Management, add or delete a password.



3) Temporary Password, setting [One-Time Password] and [Periodic Password].



4) Lock navigation volume, adjust the lock navigation volume to mute, low, normal, and high.



7.8 Restore Factory Default Settings

