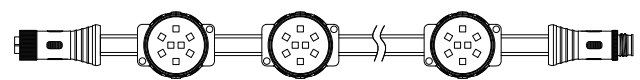


# Smart permanent outdoor light user manual

## Features

- Elegant round shape design, exquisite appearance
- Adopt high bright LEDs as light source, excellent consistent light color
- Adopt PC material as light guide, wide beam angle
- Waterproof design and filled with glue for better IP grade
- The lamp body is suitable for any place installation, and the installation is simple and quick
- WIFI+BLE dual mode faster connecting, support APP operation
- 16 million colors, optional brightness and lighting modes available
- The music mode is optional
- Support timer, countdown, sharing and memory functions
- Support voice control like Alexa, Google Assistant etc.

## Diagram

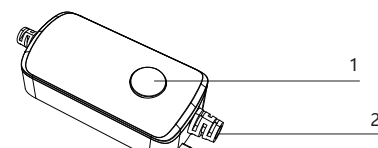


(The picture is for reference only, it will subject to the actual product).

## Product parameters

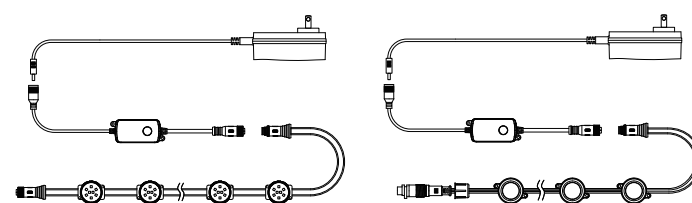
Item	40Lamps/ 15M	36Lamps/ 15M	30Lamps/ 15M	24Lamps/ 15M	15Lamps/ 15M
Adapter	12-48W/DC24V				
Color	<input type="checkbox"/> RGB <input type="checkbox"/> RGB+W				
Control way	Buttons Turn ON/OFF · Network pairing				
Beam angle	≥90°				
Working temperature	-20-60°C				
IP grade	IP67				

## Product function instructions



- Function button: single press - turn on light - mode switch  
Double press - turn off light  
Long press for over 5 seconds to reset
- Power output

## Wiring program



- Check every parts include power supply and lights and make sure every parts are all in good condition.
- Fix the position of each light according to the user's application scenario, check whether the tail plug is tightened, and then connect the adapter plug and tighten the screw Cap, installation complete.
- Double check if the wiring and installation is correct, then power on to enjoy the lighting after everything is correct.

## Installation

### Fixed by adhesive tape:

- suitable for temporary fix, or fix on smooth walls like glass, metal and smooth wood panels etc.
- Find the right position for installation. (The recommended distance from the corner is 5-10cm).
  - Clean the surface of the wall.
  - Stick the adhesive tape on back of the light, tear off the release paper from the adhesive tape.
  - Fix the light on wall and press for over 5 seconds.
  - Connect the waterproof connector.

### Fixed by screws:

- suitable for long permanent fixing, or used for rough or irregular walls.
- Find the right position for installation. (The recommended distance from the corner is 5-10cm).
  - Drill the crew holes according to the installation position on wall.
  - Fix the lights with the screws through the holes.
  - Connect the waterproof connectors.

### Notes:

- Please make sure fully clean the surface of the walls before using the adhesive tape, and fully press the lights after sticking the lights with adhesive tape.
- Don't use the adhesive tape to fix the lights on lime walls, wall papers and other irregular walls.
- If you need to extend the lights with two or more strings, just connect the end of the first string with head of the second string through the waterproof connector.  
And make sure to choose a higher power supply for the lights. (Such as the 30 bulbs require 24W power supply, and 60 bulbs will require 36W of power supply).

## Download APP

- Search "Smart Life" from App store or Google play.



- Scan the QR code from the label or user manual.

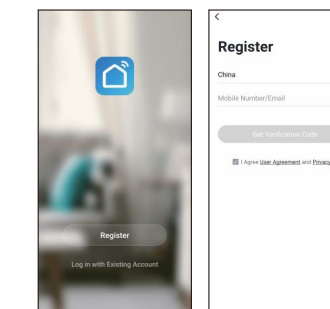


The APP is compatible with Android 5.0 and IOS 10.0 and higher version.



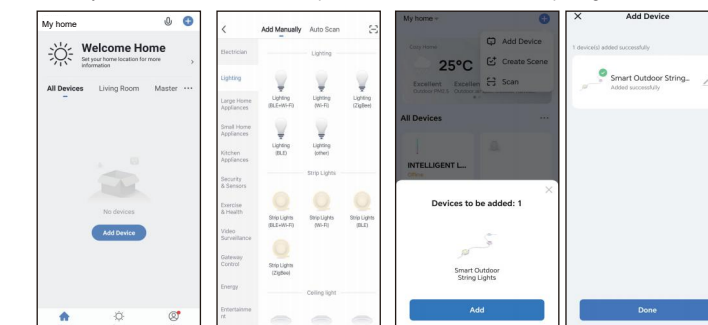
## Log in / Register account number

Open the APP, sign up for a new account or log in with an existing account.

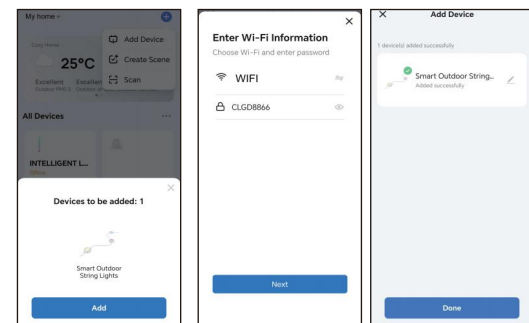


## APP connection

- Preparation: Power on the LED lights and enter the home of APP. Make sure the WIFI signal is good and stable.
- The LED lights will start quick flash when it is powered on. Then click the "Add devices" to manually add the devices, follow the steps until the devices and APP are pairing success.

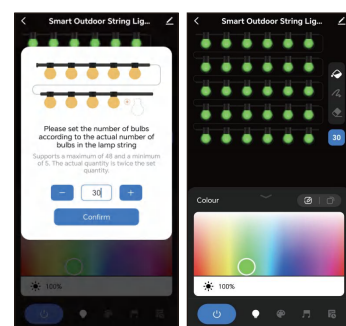


- If the LED light not quick flash after powered on the light, please long press the switch button of the controller for more than 5 seconds to reset. When the LED lights start quick flash, Then click the "Add devices" to manually add the devices, follow the steps until the devices and APP are pairing success.



## UI Introduction

- Interfaces for basic adjustment: you can set the quantity of bulbs, light colors, color palette, combination color temperature and brightness on this UI.

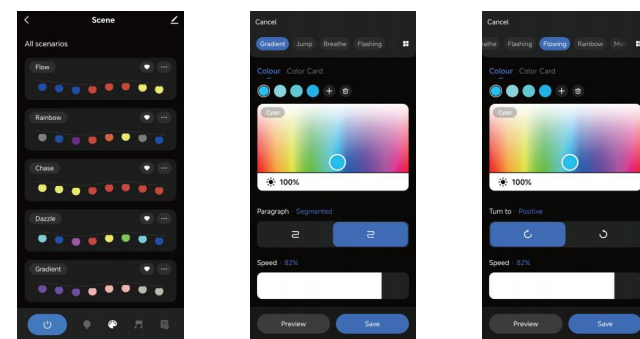


Smear toning: Fill the whole section with a paint bucket through the interactive method of painting, and then you can change the color of the painting through the color pen, and use the eraser to extinguish it independently.

- Paint bucket button: 16 million color adjustments for the entire light strip
- Brush button: Click on the device paragraph to adjust the color in segments and you can also smear several paragraphs for coloring
- Light bulbs setting button: Set the right light bulb quantity on the APP according to the real quantity of the whole lights
- Eraser button: Click the eraser to clear the color, then the segment will not light up.
- Brightness bar: Drag the brightness bar to adjust the brightness of the light color (saturation setting)

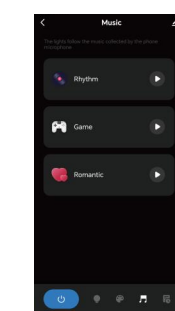
## DIY Scene Mode

Customize the scene with a combination of motion and color.

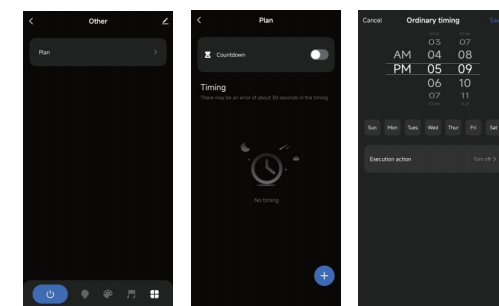


## Musical Rhythm

The lights will jump with the rhythm and volume of the internal music of your mobile phone.



Countdown to turn off the lights.



## Voice control.

Take Alexa as example

Bind the APP and operate

- Download the Alexa APP and register and log in an Amazon account
- Open the APP of Smart Life, clicking the "Me" from home page, then find the "Third-party Voice Services", and finally find the Alexa.
- Click on "Sign in with Amazon" and it will come out with a tips, then click on the "LINK", you will bind the APP of Alexa to Smart Life.

Frequently-used commands

- Alexa, turn on/off bedroom light.  
Alexa, set bedroom light to 50 percent.  
Alexa, brighten/dim bedroom light.  
Alexa, set bedroom light to green.

## Matters needing attention

- The output lead wire of power supply and the DC input lead wire of controller do not expose in rainy weather.
- The remote control should be code pairing before use. If the remote control is not sensitive, please try to replace the battery
- This product supports the use under the environment temperature of -25-60C, if beyond this low temperature environment need to be customized.
- The standard accessories for this product is adhesive tape and screws, if you require to add the cable clips, please kindly notify our sales when placing the order.
- The defaulted length for this product is 15m (50ft) each string. If you need compatible using 1 string and 2 string under same controller, please notify your sales to set the correct PID for the products and use a larger power supply of 36W.

## Instructions of remote

Brief introduction:

Through the 12-key RF433 remote, you can remote control and get various lighting effects such as dimming, color switching, water flow, rainbow, flowing light and color etc

Parameters:

- 2\*AAA Power supply way
- 10M Remote control distance

[Important] Request Code Matching Before Using the Remote Controller

- Power on the light and pair the remote controller with the light within 30 seconds
- And press the button of "Multi"+"Random" for over 5 seconds at the same time
- When the lights flash, it means the pairing successfully.

1	ON	ON
2	OFF	OFF
3		Brightness Increase
4		Brightness Reduction
5		Speed Up
6		Speed Down
7	Static Color	Red→Green→Blue Yellow→Warmwhite Cyan→Orange→Purple
8	Multi	8 colors fixed
9	Random	8 colors flash randomly
10	Strobe	Switchable & random mode with background color
11	Breath	Optional 8-color breath + automatic 8-color breath
12	Flash	Switchable 8-color flash + automatic 8-color flash



## FCC Statement

This device complies with Part 15 of the FCC Rules. Operation is subject to the following two conditions:

- (1) This device may not cause harmful interference.
  - (2) This device must accept any interference received, including interference that may cause undesired operation.
- Changes or modifications not expressly approved by the party responsible for compliance could void the user's authority to operate the equipment.
- Note: This equipment has been tested and found to comply with the limits for a class B digital device pursuant to Part 15 of the FCC Rules. These limits are designed to provide reasonable protection against harmful interference in a residential installation.
- This equipment has been tested and found to comply with the limits for a Class B digital device, pursuant to part 15 of the FCC Rules. These limits are designed to provide reasonable protection against harmful interference in a residential installation. This equipment generates, uses and can radiate radio frequency energy and, if not installed and used in accordance with the instructions, may cause harmful interference to radio communications. However, there is no guarantee that interference will not occur in a particular installation. If this equipment does cause harmful interference to radio or television reception, which can be determined by turning the equipment off and on, the user is encouraged to try to correct the interference by one or more of the following measures:
- Reorient or relocate the receiving antenna.
  - Increase the separation between the equipment and receiver.
  - Connect the equipment into an outlet on a circuit different from that to which the receiver is connected.
  - Consult the dealer or an experienced radio/TV technician for help.

This equipment should be installed and operated with a minimum distance of 20 cm between the radiator and your body