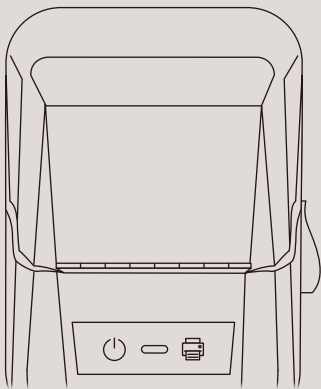


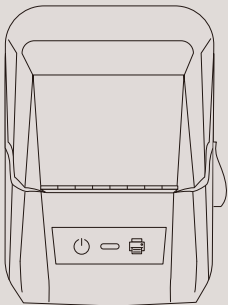
# KATASYMBOL T50M Pro



\*Scan the QR Code  
for multi-language guide and support.

**SUPVAN**

# Checklist



**1 Printer**



**1 Cable\***

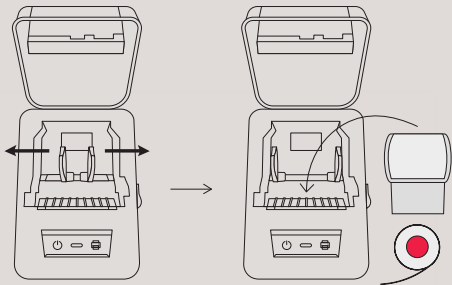


**Label Tapes**

\*The cable may be used as a charging cable,  
or data cable - connect to your computer  
and use the SUPVAN EDITOR software to edit your label.

Download the software at: [us.supvan.com/download](http://us.supvan.com/download)

# Install the Label Tape

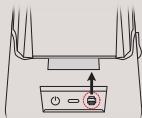


- ① Press the latch to open the label tape case
- ② Pull to open the label holding clip

Put in the label tape  
**\*note the round black piece must be on the right side**

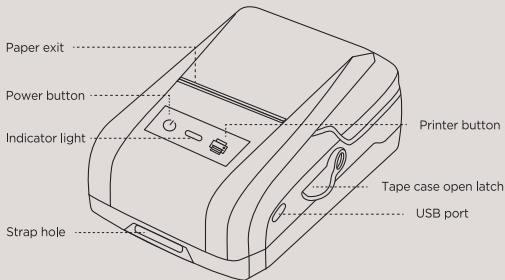


Pull and turn a length of label paper out, and close the case tightly



- ① Click the power button to turn on
- ② Double-click the print button to retract paper to the printing position

# The Printer



## Status Indicator

- Standby / normal
- Printing
- Bluetooth not connected
- Device error / printing error
- Low battery / charging


## Power Button

- Long press to turn on and off

## Print Button

- Click to repeat last printing
- Double-click to retract label paper
- Triple-click to print a QR code for downloading the App

# Connect to Printer via App

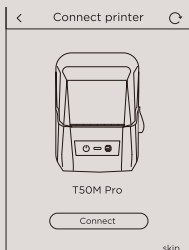
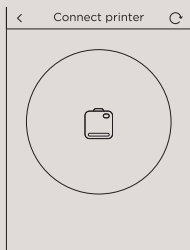
Katasymbol 

Download "Katasymbol"  
from App store (🍏iOS & 🤖Android).



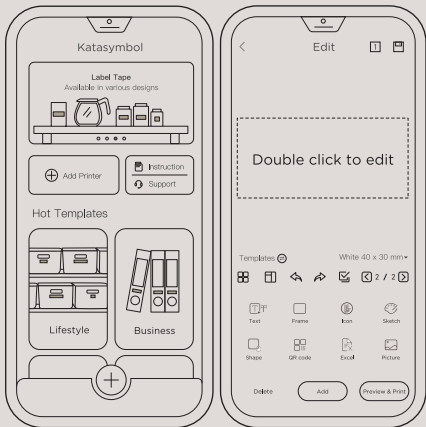
Or scan the QR code  
to download the App

1. Hold the power button for 2 seconds to turn on the printer with Bluetooth on.
2. Turn on the Bluetooth on your phone.
3. Download and open the App on your smartphone.\*
4. Click "Add Printer" and search for the device to connect.

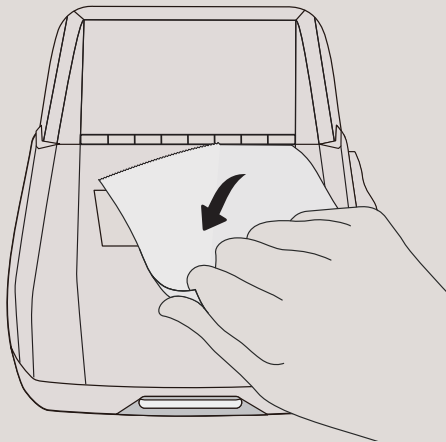


\*If asked for permission, please allow the App  
to access the location information of the smart phone (Android only).  
Otherwise the Bluetooth connection will not function.

# Use Templates or Customize with App



Print & Cut



# Features

## **In-printer Memory**

After the last printing, the device will store the file information. You may repeat the last printing job by simply click the power / print button to fast print. If another type of label was installed, a welcome page will be printed.

## **Various Templates for Edits**

The smartphone App and computer software comes with all kinds of label templates for various uses. New templates are constantly being added and updated.

## **Batch Printing**

Use the App to edit your files or print multiple copies in one click.

## **Use with Different Labels**

Compatible with different kinds of labels, to serve various needs.

# Features

## **Precise Label Positioning**

Automatically detect the label paper position by double-clicking the print button, precisely retract the paper to the standby position and avoid wasting.

---

# Maintenance

## **Max. Print Length**

It is advised to not print out more than 8m or a full roll of label paper in a single print job.

## **Print Head Maintenance**

- Turn off the printer, open the paper case and take out the label paper roll.
- Use a cloth or cotton swab with ethanol alcohol, wipe the printhead gently.
- Wait for it to completely dry before turn on the printer.

## **Battery**

If not used for a long time, please charge the printer every 3 months to avoid the natural loss of lithium battery.

# Troubleshooting

## Fault Notice

In general, when the printer is malfunctioning or in fault, the smartphone App will show fault notice; the connection between the printer and smartphone will halt and the printing will stop.

## Fault List

App Message	Description	Fault	Solution
Low Battery	Red light on	Low Battery	Charge
	Prints blurred		
Label paper not recognized	Label paper installed but not recognized by the printer	Non-original manufacturer product	Change and install label paper
	No label paper has been recognized	Label paper not installed	
Print error	Normal printing, but no label coming out	No label paper left	Check the label paper roll
		Paper stuck	Reinstall the label paper
		Label paper case not closed	Close the paper case properly

\*If the fault cause cannot be determined, please contact us via the in-App Customer Service.

# SAFETY INFORMATION



- Please carefully read this manual before use the product.
- Please keep this product and its accessories away from children, to avoid potential danger.
- Do not disassemble the printer if you are not an authorized service person; Do not open the cover when the printer is printing;
- Please use SUPVAN's factory original products and consumables, otherwise may result in bad printing quality or damage to the printer.
- Do not pull the label forcibly during the printing process, to avoid damage to the printer;
- This product is a precision product, please use on a plain surface, avoid fall and other impacts.
- The print head of this product is a precision part. Do not scratch it to avoid affecting the printing function;
- Do not throw the printer into fire or high temperature;
- Please use a single power socket, instead of multiple sockets with multiple devices plugged in, which may cause fire or electric shock;

- Please do not use an adapter that does not support DC 5V output;
- When charging, do not let printer / power supply / power socket to be in contact with water, and do not plug or unplug the power with wet hands, to prevent electric shock;
- Please do not let metal or liquid enter the equipment, to prevent fire or electric shock, or damage to the internal parts and the printer;
- Please use the printer in a clean environment. Do not use it on rug or blanket, or dusts may cause short circuit.
- Please keep the printer away from flammable solutions such as alcohol or gasoline, and away from fire to avoid explosion and fire hazards.
- Please do not touch the print head with your hand. If you touch it at the end of the printer, it may cause skin burns;
- Please do not press the printer;
- The printer and label paper supplies should be stored in a room temperature, dry, ventilated place without direct sunlight.
- If peculiar smell or sound is detected when using the printer, please turn it off immediately and contact the seller.
- After long period of working, the lithium battery may generate heat and diffuse on the bottom side of the printer. This is normal. You may pause the printer and wait it to cool to resume normal work.

# Warranty

- Beginning from the date of purchase, 3 months warranty on the print head or total print length of 30km, whichever comes first; 12 months warranty on the other parts.
- The warranty of newly serviced parts is subject to the warranty of the whole device.
- No warranty on the label consumables. If there is a quality problem, they can be replaced free of charge.

# Disclaimer

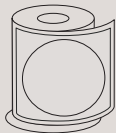
- SUPVAN will not be responsible for any consequences caused by:
  - Failure to operate the device according to the instructions and safety warnings listed in this manual.
  - Use of non-SUPVAN factory's consumables.
  - Unauthorized disassemble, service, or customization to the product.
  - Malfunctions caused by abnormal voltage or improper operating environment.
  - Damage caused by fall, press, water, moisture, or any human actions.
  - Damage caused by force majeure such as flood, fire, or lightning strike.
  - Uses other than the designed uses of this printer.
- SUPVAN reserves the right to change the contents of this manual due to product upgrading.
- The non-SUPVAN trademarks and symbols included in this manual are owned by other companies.

# Product Specifications

<b>Name:</b>	Label Printer
<b>Model:</b>	Katasymbol T50M Pro
<b>Printing Method:</b>	Thermal printing
<b>Resolution:</b>	203 dpi
<b>Label Width:</b>	20 mm – 50 mm
<b>Max. Effective Printing Width:</b>	48 mm
<b>Print Speed:</b>	40 mm/s - 60 mm/s
<b>Battery Capacity:</b>	1200mAh
<b>Physical Dimension:</b>	127 mm x 95 mm x 60.5 mm
<b>Data Transfer:</b>	Bluetooth 5.0 + Bluetooth BLE 4.0 dual transfer mode
<b>Power Supply:</b>	5V $\overline{=}$ 2A
<b>Working Environment:</b>	10°C~40°C
<b>Storage Environment:</b>	-5°C~55°C
<b>Working Humidity:</b>	20%~80% No frost
<b>Storage Humidity:</b>	5%~80% No frost



# Available Labels



Transparent  
φ 50 mm



Thermal label  
φ 50 mm



White

25 mm x 38 mm + 40 mm



Yellow

25 mm x 38 mm + 40 mm



Blue

25 mm x 38 mm + 40 mm



White

30 mm x 20 mm



Transparent

40 mm x 30 mm



Thermal label

40 mm x 30 mm



Thermal label

50 mm x 30 mm



Thermal label

50 mm x 80 mm



**And more...**

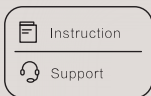
# Support



Scan to download App  
Katasymbol (🍏iOS & 🤖Android)



Scan for user guide and support  
in other languages



Find more instructions  
and Customer Support inside the App.



katasymbol.com



**SUPVAN**