

This driver installation demo tutorial is for windows systems

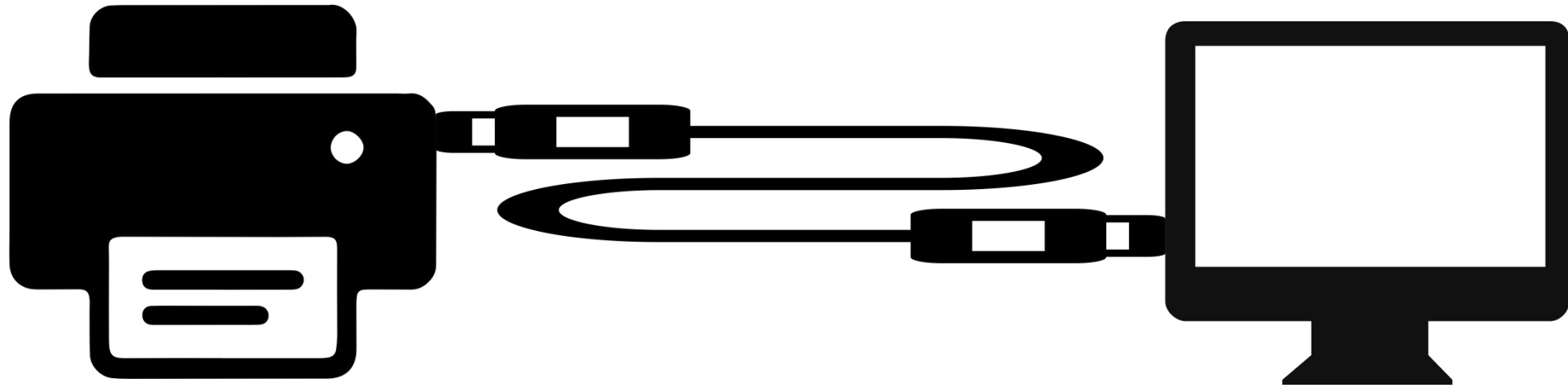
# Clabel label printer

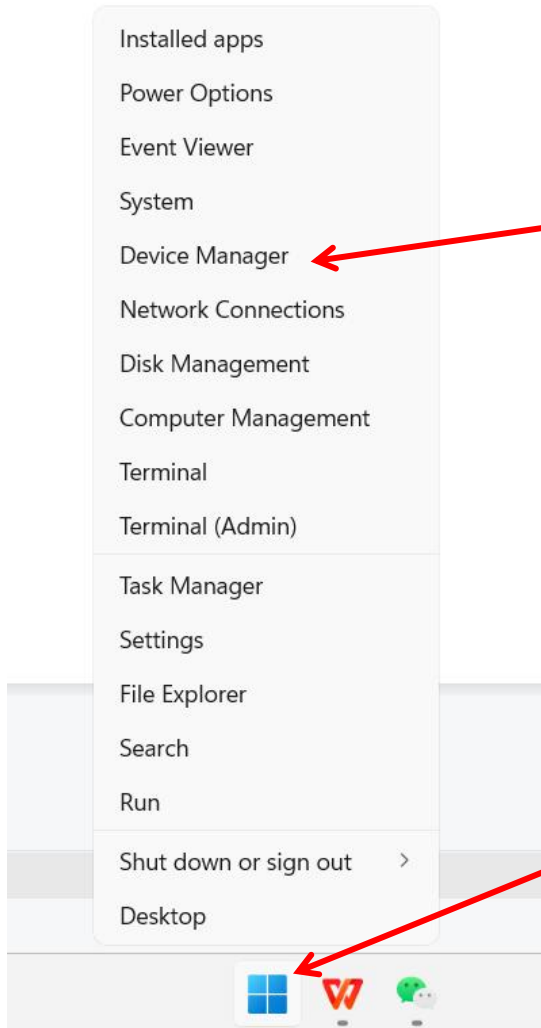
# Driver installation tutorial

01

Get the port value

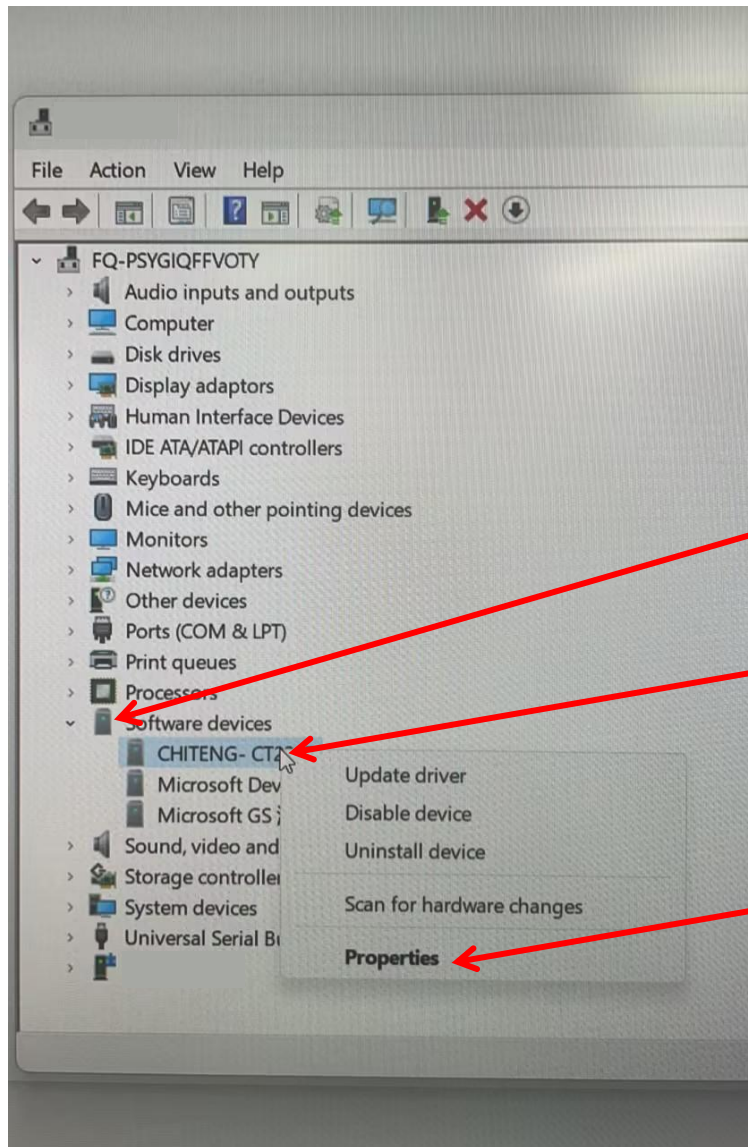
1. Use a USB cable to connect the printer to the computer





**3. Open Device Manager**

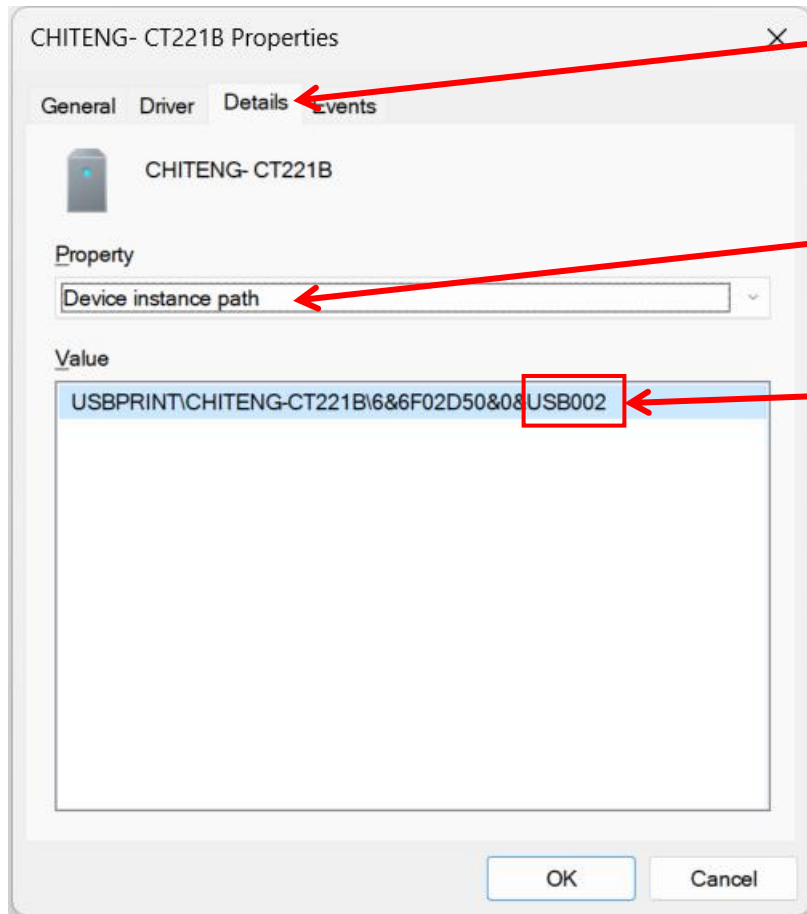
**2. Right mouse click**



4. Expand Universal Serial Bus Controller

5. Find the printer and right-click

6. Select property



7. Click Universal Serial Bus Controller

8. Device instance path

9. Remember this string of characters

The background is a solid blue color. In the center, there are several abstract geometric shapes. A large, semi-transparent blue number '02' is positioned at the top center. Below it, the text 'Install the driver' is written in a white, sans-serif font. To the left of the '02', there are two small, light blue triangles. Below the text, there are several larger, semi-transparent blue shapes, including a large white-outlined triangle pointing downwards and several other blue triangles of various sizes and orientations, some overlapping each other.

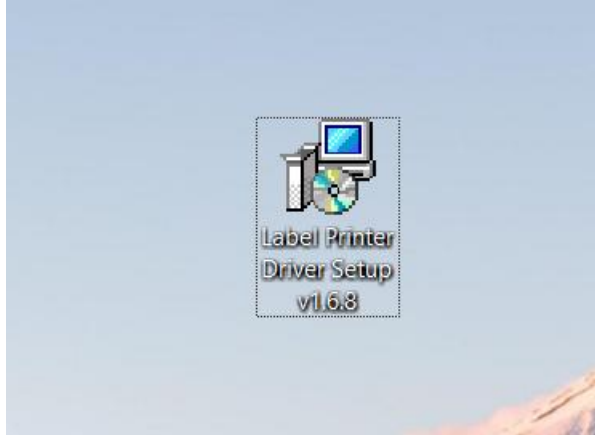
Install the driver

1. Download the driver from the official website: <https://ga.ctaiot.com/pc/>

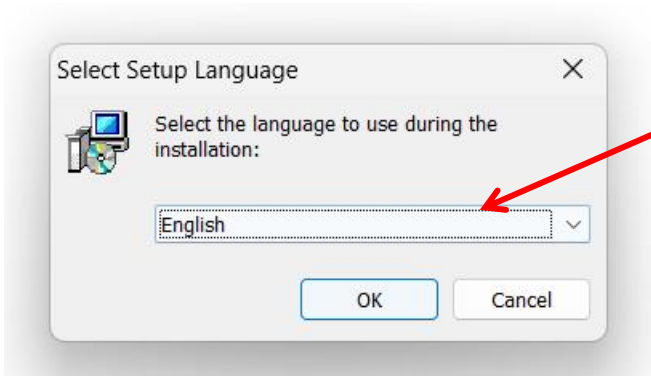


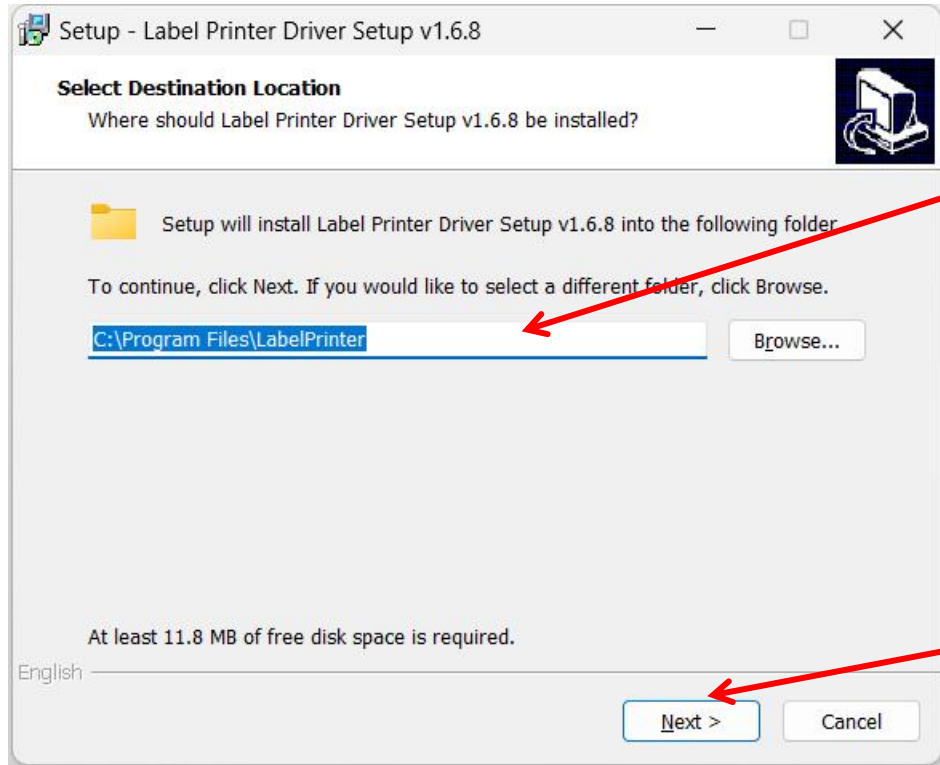
The screenshot displays the Clabel website interface. At the top, the Clabel logo is visible. Below the logo, the text "Simple and smart with Clabel" is centered. A row of four buttons represents different printer models: CT220D, CT220B, CT230B, and CT428S. The CT220B button is highlighted in white. Below this row, a white panel titled "Software Download" is shown. It is divided into two columns: "Windows" and "Mac". Under the "Windows" column, there are links for "Software" and "Print Driver". The "Print Driver" link is enclosed in a red rectangular box, and a red arrow points to it from the right. Under the "Mac" column, there are links for "Software" and "Print Driver". Below the "Software Download" section, there is a "Documents" section with links for "Instructions for Use", "Software installation tutorial for Windows", and "CT220B Repair Method". At the bottom of the page, the copyright notice "©2022 Chiteng Inc. All rights reserved." is followed by links for "Terms of Service" and "Privacy Policy".

## 2. Open the driver



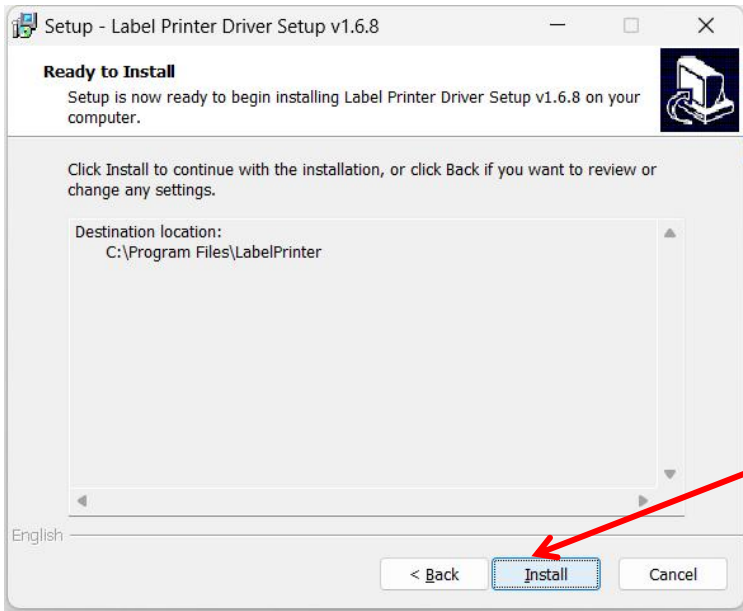
## 3. Choose the language that's right for you



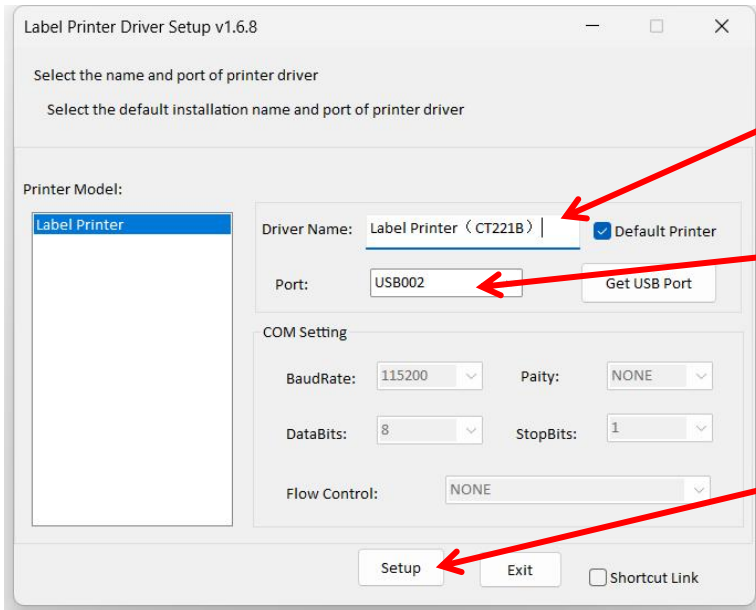


4. Select the installation location, it is recommended not to change

5. Next



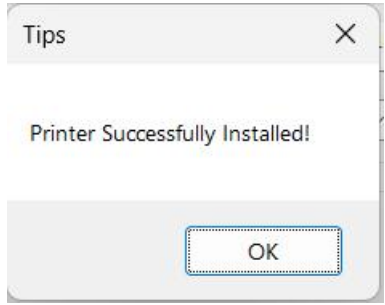
6. Install



7. Name your printer

8. Select the port number we have been informed of earlier

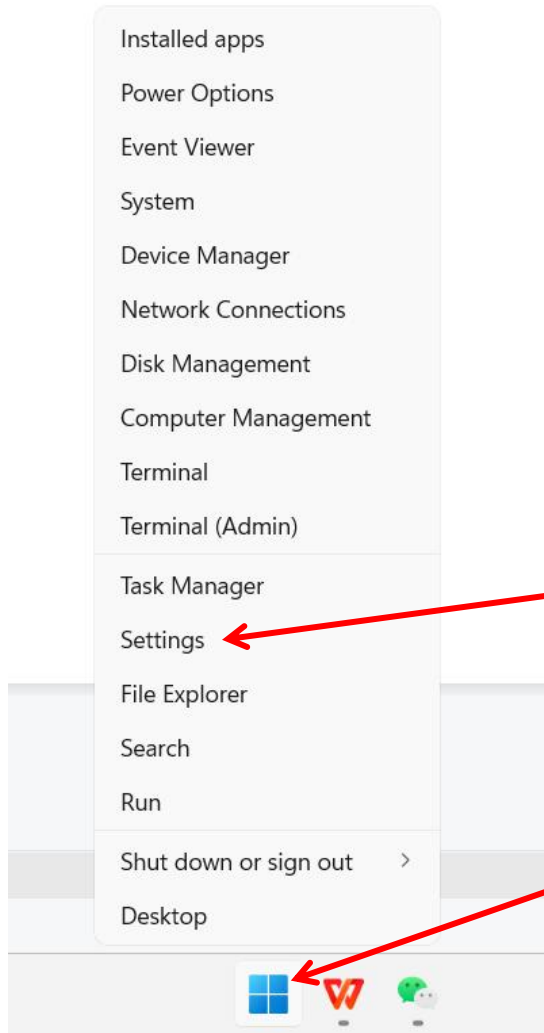
9. Setup



## 10. Installation completed

03

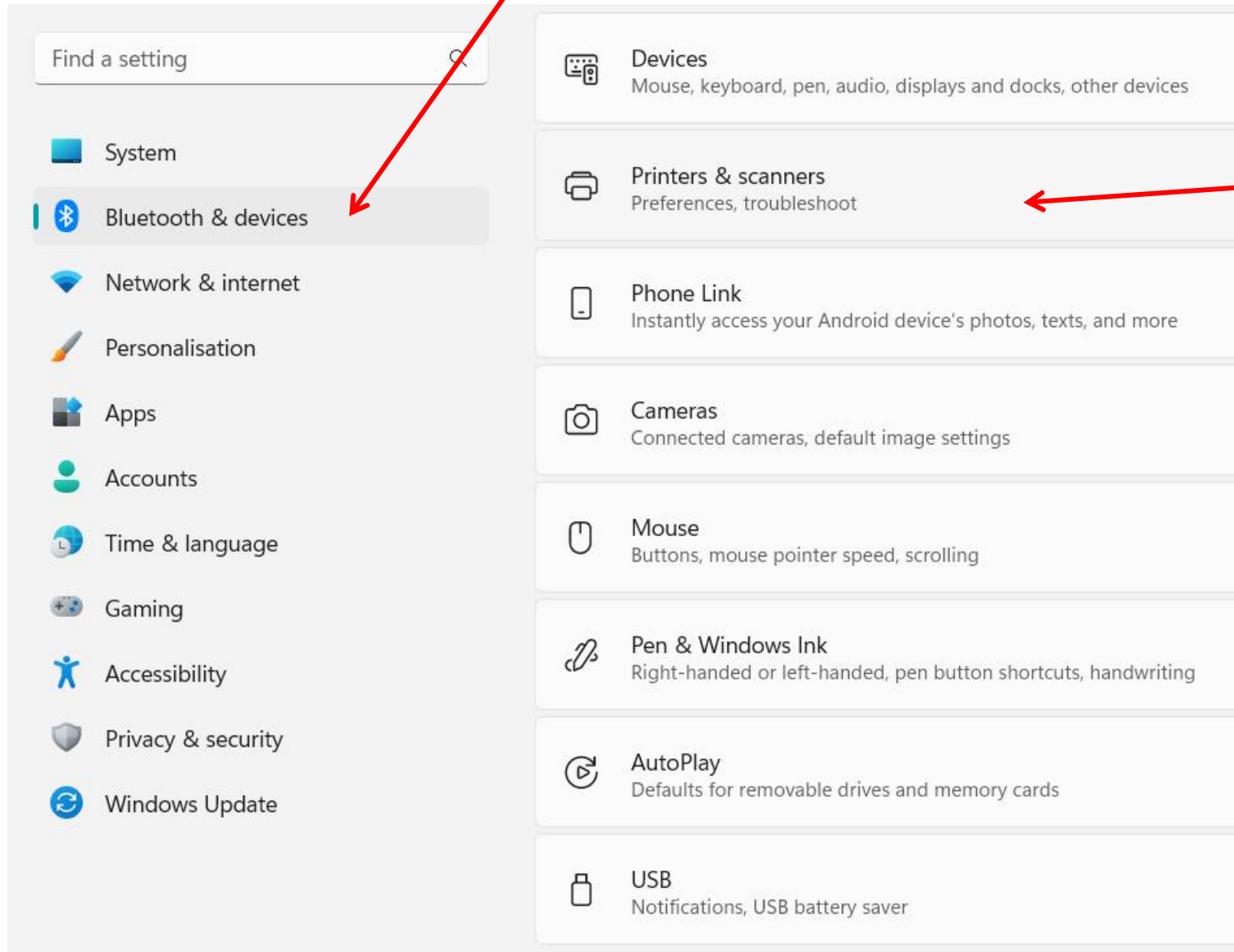
Test whether the driver  
is successfully installed



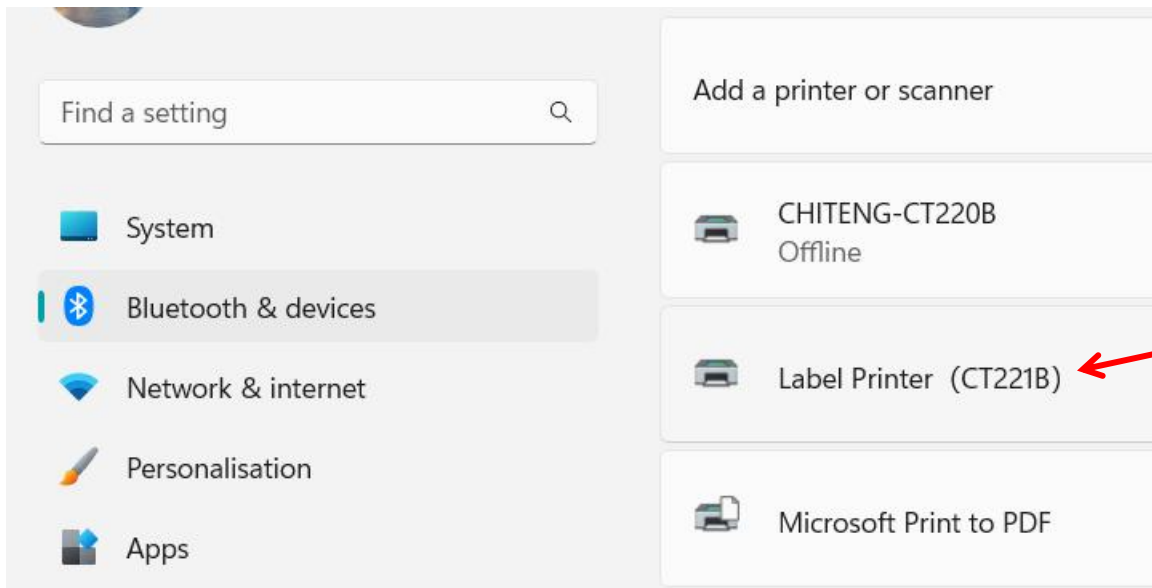
2.Settings

1. Right mouse click

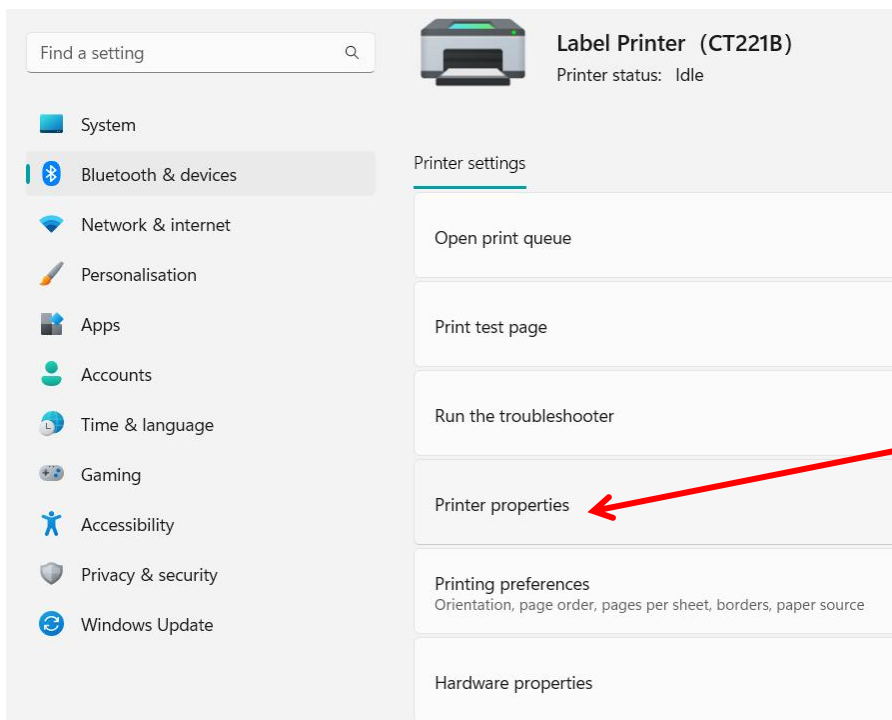
### 3. Click on Bluetooth and other devices



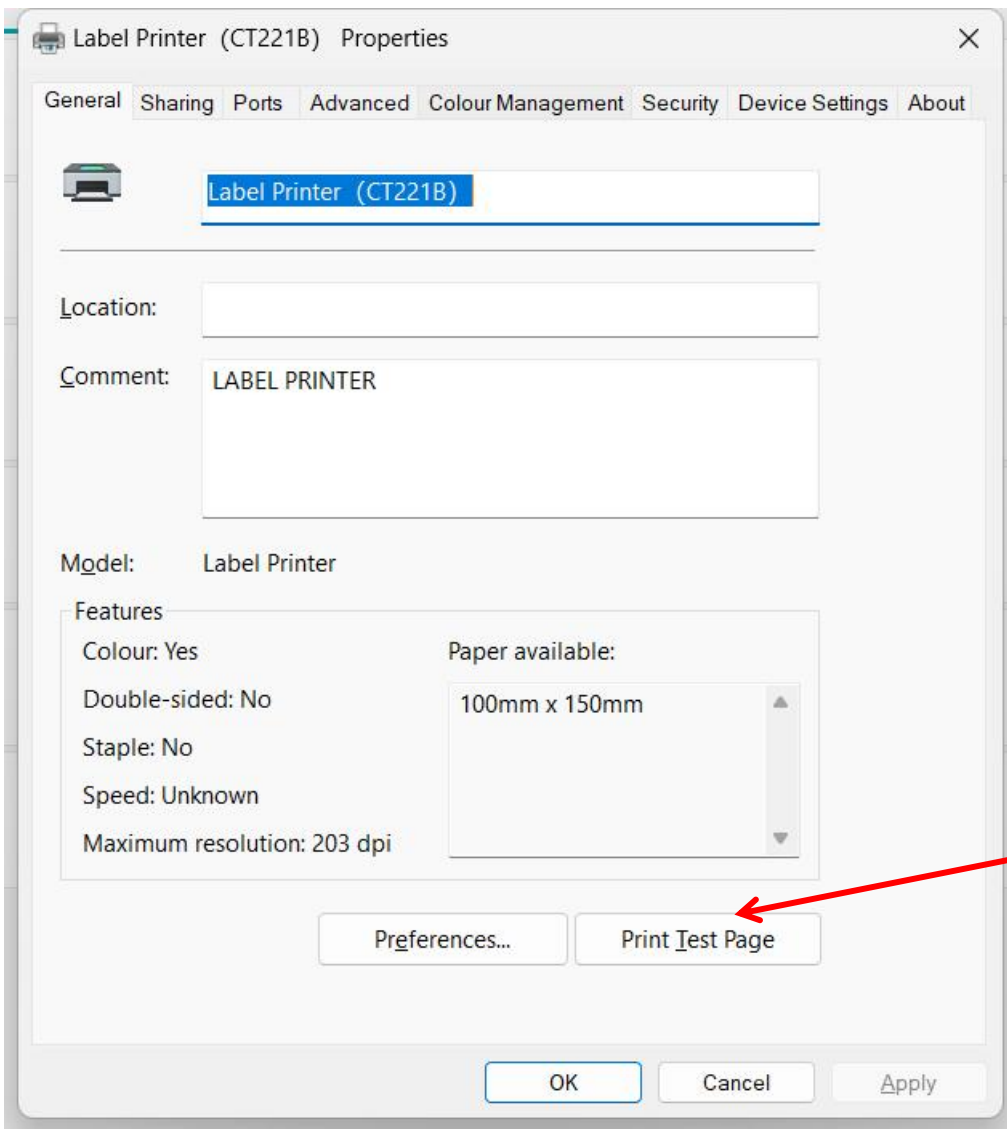
### 4. Click Printer and Scanner



5. Click on the driver you just installed



6. Printer properties



7. Click to print the test page

If you see that the printer is successfully running, the driver is successfully installed



Thanks