

User Manual

AM100



service@lingdu.us

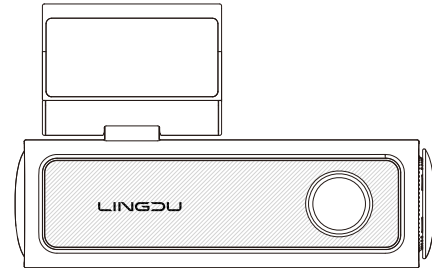
Response in just 12 hours

Product | Car Dashcam
Manufacturer | Dong Guan KAKA Electronic Technology Co., Ltd.
Address | No.395,HuanshiEast Road Shitanpu Tangxia Town
Dongguan CN. 518000
Product Warranty | One-Year Limited Warranty
Customer Support | service@lingdu.us

www.lingdu.us



FCC ID: 2ASWVAM100



LINGDU


Table of Contents

1.English	01
-----------------	----

Index

1. Customer Service.....	2
2. Important Safety Information	3
3. In The Box.....	5
4. Specification.....	6
5. Product Diagram.....	7
6. Getting Started	9
7. Installation.....	11
8. Playing Video Files Using Your Smartphone	14
9. General Setting.....	24
10. Playing Video Files Using Your Computer.....	31
11. Firmware Update.....	33
12. Voice Prompts	34
13. ADAS Intelligent Driving Assistance Calibration	34
14. FAQ.....	35
15. Notice	36

1. Customer Service

-  Defective or damaged item?
Inaccurate description?
Missing parts or accessories?
Performance or quality not adequate?
Wrong item was sent?

 **service@lingdu.us**
Response in just 12 hours

Contact us before returning the item.
We will help you resolve any issue asap.

Note:

1. A 64GB microSD card is provided with the LINGDU dashcam when you purchase the product. Be sure to format your microSD card with your dash cam for the first time use.
2. Please ALWAYS connect with power when using. As it is built in Super Capacitor (Only has a 1mAh Lithium Metal Battery used to memorize time).

2. Important Safety Information

Thank you for purchasing this LINGDU dashcam.

This instruction manual contains information on how to operate your dashcam.

Before using your dashcam, we recommend that you read through this manual to ensure correct usage.

To improve the performance of the product, the contents of this manual are subject to change without prior notice.

·Do not disassemble, repair, or modify the product yourself.

Doing so may cause fire, electric shock, or malfunction. For internal inspection and repair, contact the service center.

·If any foreign matter gets inside the product, detach the power cord immediately.

Contact the service center for repair.

·Do not adjust the product while driving.

Doing so may cause an accident. Stop or park your car in a safe place before installing and setting up the product.

·Do not install the product in a location where the product can interfere with the driver's field of vision.

Doing so may cause an accident.

·Do not use a damaged or modified power cord. Only use the cords provided by the manufacturer.

Damaged or modified power cords may cause an explosion, fire, or malfunction.

·Do not operate the product with wet hands.

Doing so may cause electric shock.

·Do not install the product in an environment with high humidity, or combustible gases or liquids.

Doing so may cause an explosion and/or fire.

·Do not leave the product near infants, children, or pets.

There is a risk of them swallowing small components, and/or their saliva may get into the product, causing an explosion due to a short circuit.

·Do not spray water or wax directly onto the product while cleaning the inside of the car.

Doing so may cause fire, electric shock, or malfunction.

·If smoke or an unusual smell is emitted from the power cord, detach the power cord immediately.

Contact the service center or your distributor.

·Keep the terminals of the power cord clean.

Failure to do so may cause excessive heat and fire.

·Use the correct input voltage.

Failure to do so may cause explosion, fire, or malfunction.

·Plug in the power cord firmly so that it cannot easily be disconnected.

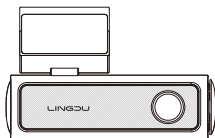
Failure to do so may cause fire.

·Do not cover the product with any material.

Doing so may cause external deformation of the product or fire. Use the product and peripherals in a well-ventilated location.

3. In The Box

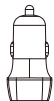
Check the box for each of the following items before installing the dash cam.



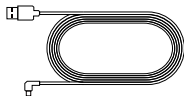
Dash camera ×1



Electrostatic films ×2



Car charger ×1



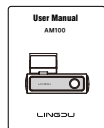
Type-C USB Power cable (3.5M/12ft)×1



Storage card x1



Cable clips x 5
Pry tool x 1



User manual x 1

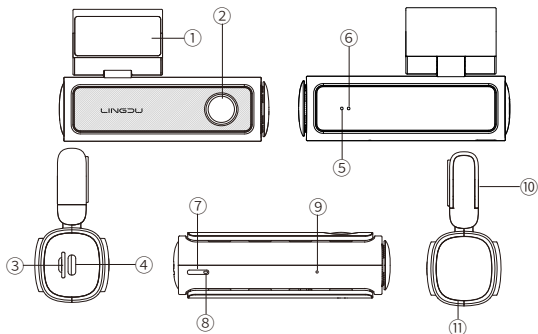
Note:

1. To improve the performance of the product, the contents of this manual are subject to change without prior notice.

4. Specification

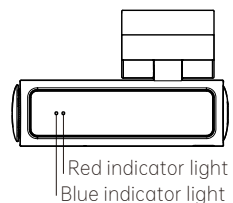
Model	AM100
Aperture	F=1.75
Size	114.6*34.7*35mm
Language	English / 日本語 / Deutsch / Français / Español / Italiano / Русский.etc
Memory	Max support 256GB (U3 Speed, only one 64GB microSD in the dash cam)
Bluetooth	BLE 4.2
Video Format	MP4
Video Resolution	-4K 3840x2160P 30fps -2K 2560x1440P 30fps -1K 1920x1080P 30fps
GPS Track	Built-in, LINGDU GPS Player
WiFi	Built-in 5GHz WiFi
Battery	Built-in Super Capacitor
Power Interface	5V/2.5A
Operation Temperature	-20°C to 70°C (-4°F to 158°F)

5. Product Diagram



#	Description
1	Sticker mount
2	Front camera
3	Micro-SD card slot
4	Type-C USB port for charging
5	Blue indicator light
6	Red indicator light
7	Function key: -Pressing once will turn on or off audio recording. -Pressing twice will turn on or off ADAS. -Press and Hold for 5 seconds to set to default settings

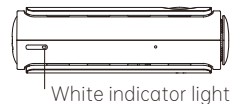
8	White indicator light
9	Reset button
10	Sliding bracket
11	Speaker



Red indicator light:
Flashing indicates a damaged memory card.
Solid light indicates memory card reset or format.

Red and blue indicator lights:
Alternate flashing indicates emergency recording.
Simultaneous flashing indicates an upgrade in progress.

Blue indicator light:
Solid light indicates downloading.
Flashing once per second indicates normal recording.



White indicator light:
Solid light indicates that audio recording is turned on.
The light off indicates that audio recording is turned off.

6. Getting Started

The camera is designed to power up and record automatically when it receives power. Then saves the video record and turns off automatically when the car shuts off.

1. Auto Power ON/OFF:

Plug car charger to cigarette lighter socket. When the car engine is on, dash cam will turn ON and start recording automatically.

When the car key is turned to LOCK position, dash cam automatically saves the recording and turns OFF.

2. Manual Power ON/OFF

Manually Turn ON: Press the power button once.

Manually Turn OFF: Press and hold the power button for at least 2 seconds.



Note:

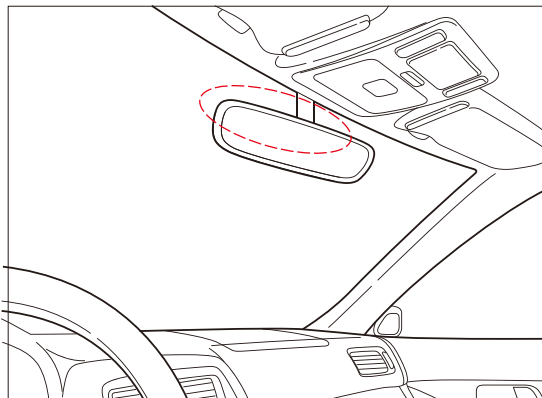
1. A 64GB microSD card is provided with the LINGDU dashcam when you purchase the product. Be sure to format your microSD card with your dash cam for the first time use.
2. Please ALWAYS connect with power when using. As it is built in Super Capacitor (Only has a 1mAh Lithium Metal Battery used to memorize time).
3. Setting Date & Time: Please calibrate the date/time based on your location under the TIME ZONE SETTING by going to APP system settings menu.
5. Some trucks/cars's 12V cigarette outlet is always HOT, which means it provides constant power even when the car is turned off and locked. If this is the case for your vehicle, then the auto

ON/OFF feature will not work. And if you leave the camera continuously recording when the car is turned off, then it will drain your car/truck's battery and you might not have enough power to start your car for next time. To remedy this situation, you can do one of the two options:

- ① Hardwire your dash cam to your car's fuse box with 3-Lead Type-C Auto Trigger Hardwire Kit.
- ② Change the connection in the fuse box for your 12V outlet to socket which only supplies power when car key is turned to ACC or ON position.

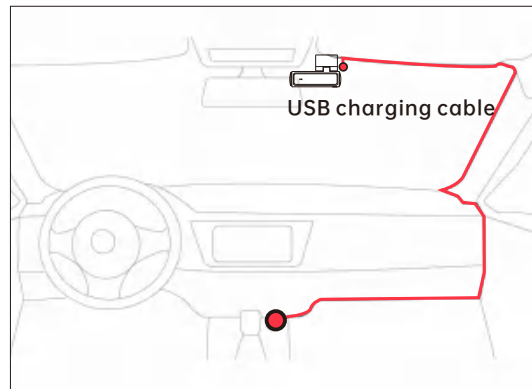
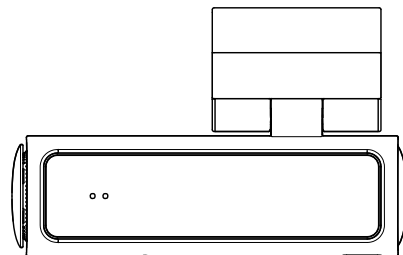
7. Installation

Install the front camera behind the rear view mirror. Remove any foreign matter and clean and dry the windshield before installation.

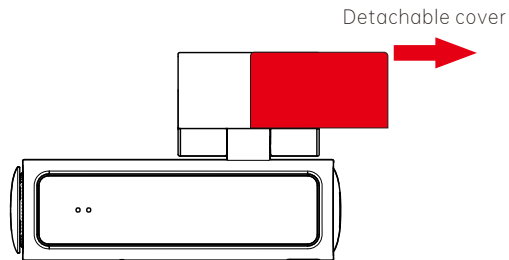


1. Turn off the engine, gently push the card into the slot until it locks into place. (Please using class 10 or above high-speed U3 micro-SD card)
2. Find a suitable place on windshield where don't obstruct the driver's field of vision and remove any foreign matter and clean and dry the windshield before installation. Tear off the protective layer of the electrostatic sticker and adhere the electrostatic sticker to the windshield to prevent mark/glue on your windshield after removing it.
3. Peel off the protective film from the double-sided tape and attach the front camera to the electrostatic sticker. Adjust the angle of the lens by rotating the body of the front camera.

4. Plug the cigarette lighter power cable into the cigarette lighter socket and the front camera. Use the pry tool to lift the edges of the windshield trim/molding and tuck in the power cord.

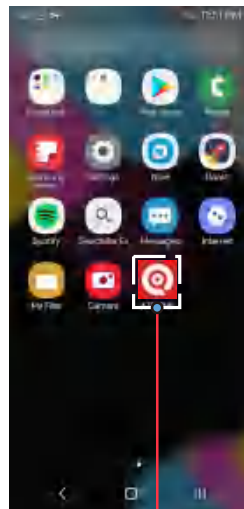


5. Turn on the engine. The dashcam will power up and start recording. Video files are stored on the microSD card. Turn off the engine. The dashcam will automatically stop recording and power down.



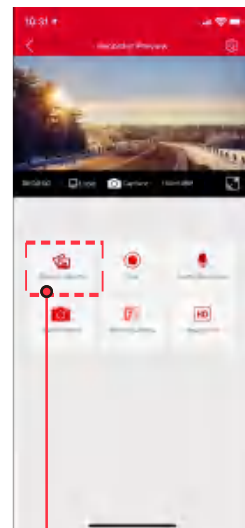
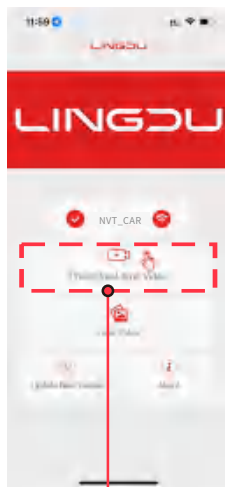
8. Playing Video Files Using Your Smartphone

8.1 Check real-time video using your smartphone



Scan QR code to
download LINGDU APP

1 Search for the LINGDU app in the Google Play Store or Apple App Store and install it on your smartphone.



2 Upon entering the LINGDU app, if Bluetooth is enabled on your phone, it will prompt you to join the AM100's wireless network. Please click 'Join'. After approximately 10 seconds, you will be successfully connected to the recorder's WiFi.
Or you can go to Phone's Settings > WiFi > Select WiFi of dash cam,

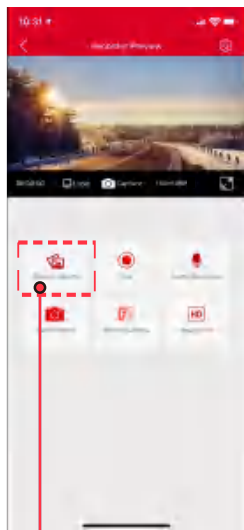
3 There will show dash cam model AM100 when connect successfully. Press "Check Real-time Video" to live video preview interface.

4 Now you can view the video currently being recorded real-time by connecting your smartphone to the dashcam via Wi-Fi Direct.

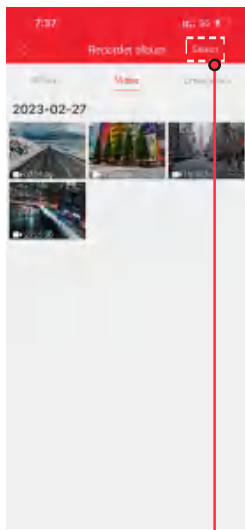
5 Please STOP recording first, then press the 'Device Album' to get Photo, Video, Emergency files.

WiFi Name SSID: NVT_CARDV*****
Default PASSWORD: Lndu88888

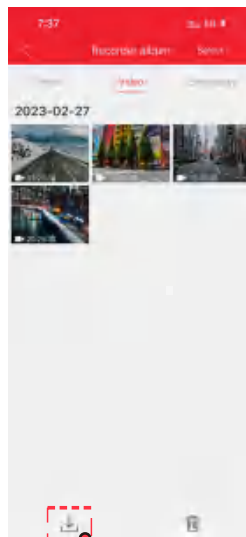
8.2 Download the video files into your smartphone



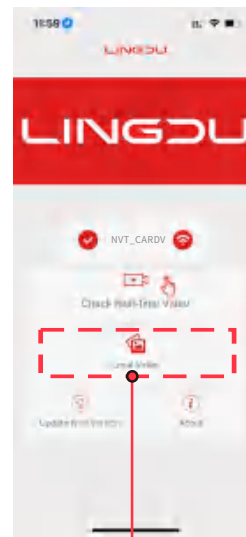
1 Go to Dashcam Preview interface. Please STOP recording first, then press the 'Device Album' to get Photo, Video, Emergency files.



2 Select the video files to download into your smartphone.



3 Press the icon to download the video files. However, it will take a bit of time to download one video file.

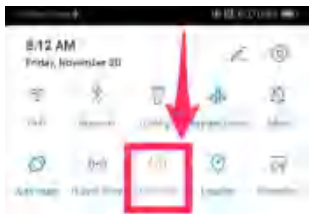


4 Then you can find these downloaded video files in APP original interface menu named 'Local Video'.

The app won't show the live video on your phone. It only shows a picture of the beach?

The cellular data will cause the live video not to be viewed. If the APP won't show the live video, please disable the 'LINGDU' cellular data of your phone. Sure that the Local Network of the 'LINGDU' is turned on.

1. For Latest iOS System: Setting→LINGDU→Click 'Wireless Data'→Select 'WLAN' .
2. For Older iOS System: Setting→LINGDU→Disable the 'Cellular Data'.



Note:

1. WiFi Direct lets you directly connect your smartphone to your dash cam via WiFi within a range of 10FT.
2. Once it is connected to the LINGDU APP it will automatically update the date/time.
3. The LINGDU is available for devices running Android 5.0 and higher, or iOS 9.0 and higher.

What is a WiFi Feature?

The WiFi feature has been designed so you can pair your dash camera wirelessly with your smartphone and access your recording instantly from the dash cam. Here you can view, download and share your videos easily with your friends and family. Just like how you would connect your Bluetooth speaker to your smartphone for wireless music play, the same way dash cameras use WiFi signal (instead of a Bluetooth) to pair your smartphone with LINGDU AM100.

Can I watch the videos around my car remotely?

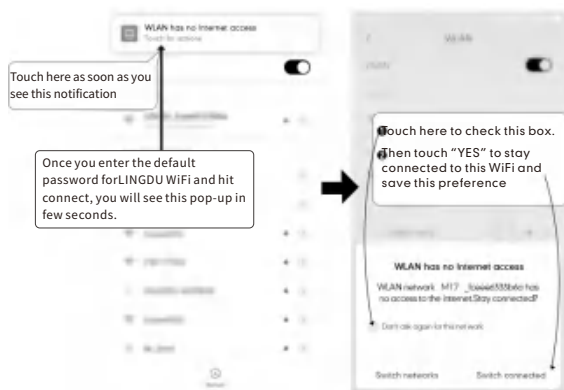
NO. LINGDU AM100 dash cam is NOT made to broadcast footage over the cloud or internet. It is NOT a cloud or an IP camera and it is NOT meant to do that. You can get live video and footage on LINGDU dash cam's APP as long as you stay within the 10FT range from the dashcam.

What is the WiFi Range?

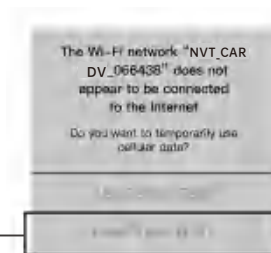
The WiFi signal range is about 10FT when there are NO obstructions in the middle. Please NOTE that just like your home WiFi network, you don't have WiFi signal outside your home, the same way, WiFi range is 10FT from this small device.

For Android phones:

When installing the LINGDU APP, it will have two pop-up prompts, select 'While using the APP' to allow LINGDU to access this device's location, and select 'Allow' to allow LINGDU to access photos and media on your device. There is one extra step you will have to take for the first time. Once you connect to the WiFi of AM100, it will say 'No Internet'. Which is fine. Wait about 10-15 seconds until you see the below pop up or notification. You just have to tap on the pop up notification that will show up in few seconds to select that you still want to stay connected even though there is NO Internet. Once you select this OK, you are set to go.



For iPhone:



If you get this pop up for your iPhone while using WiFi feature, make sure to tap on 'Keep Trying WiFi'. Otherwise the camera will get disconnected from the WiFi and then you will have to forget the LINGDU WiFi and then start to pair again to make it work again.

8.3 Calibrate Date/Time

LINGDU AM100 is built-in GPS, need to set Timezone first in APP so that the video date/time stamp will be correct. Please connect to LINGDU APP, using the function menu to set Timezone.

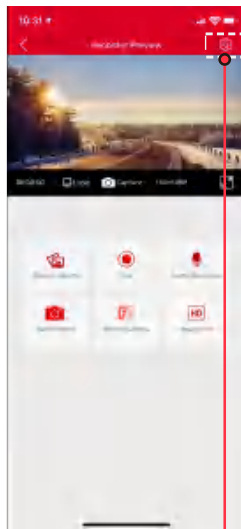
UK Time Zones	British Summer Time	British Winter Time
	GMT/UTC +1	GMT/UTC ±0

USA Time Zones	When Daylight Savings Ends Nov - March	When Daylight Savings Begins March - Nov
Hawaii	GMT (-10:00)	
Alaska	GMT (-9:00)	GMT (-8:00)
Pacific Time Zone	GMT (-8:00)	GMT (-7:00)
Mountain Time Zone	GMT (-7:00)	GMT (-6:00)
Central Time Zone	GMT (-6:00)	GMT (-5:00)
Eastern Time Zone	GMT (-5:00)	GMT (-4:00)

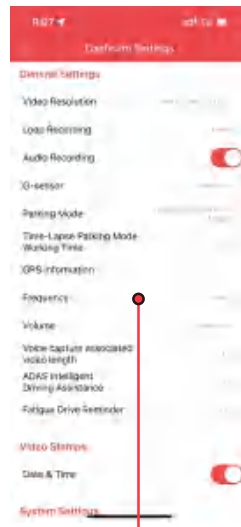
8.4 Format Micro-SD Card

Please connect to LINGDU APP, using the function menu named "Format SD Card" to do.

9. General Setting



1 Go to Dashcam Preview interface.
Please STOP recording first,
then press the settings icon.



2 Select what you
need to set.

9.1 Video Settings

Video Resolution

Allow to choose the desired video resolution and fps(frames per second). Higher resolution and fps videos result in smoother videos, but also take more storage space.

-4K 3840x2160P 30fps(Default)

-2K 2560x1440P 30fps

-1K 1920 x1080P 30fps

Loop Recording — 1min/ 2mins(Default)/ 3mins

Here select the length(1/2/3 min) of each video clip for the loop recording. This function allows the dash cam to continuously record.

Please notice: The dash cam will keep deleting the oldest files automatically when memory card gets full so that it can keep recording over and over.

Audio Recording — On(Default)/Off

The dashcam has built-in microphone to record audio with video. You can choose to record mute video by choosing OFF.

G-Sensor — Off/ Low/ Medium(Default)/ High

G-sensor is a 3-axis impact gravitational accelerometer, designed to detect physical and gravitational forces on the dash cam. Once G-sensor has been triggered due to physical or gravitational impact force on the camera, the current video file will be locked as an emergency file so it won't be deleted by loop cycle function. The higher the G-Sensor sensitivity is, the less force will be needed to trigger automatic file protection.

Parking Mode

This function will ONLY work when 3-Lead Hardwire Kit is installed properly, the output current of Hardwire Kit needs to reach 2.5A. Then select parking mode. This parking mode has two options to choose from.



Note:

1. Please download and update the latest firmware from the manual.
2. Custom-designed Type-C 3-Lead Hardwire Kit is required to use this new feature. Not included in the packaging, on Amazon search: [Type-C 3-Lead Hardwire Kit for AM100 Dash Cam](#)

*Time-Lapse Parking Mode:

1. When you turn OFF the car's engine and turn the key to the lock position. Then the camera will STOP the continuous video recording and it will go into the timelapse 1fps recording mode automatically.
2. Now while this timelapse is being recorded, if someone hits your car and if the impact reaches the set G-Sensor level, then the camera will start to record 1-min continuous video, save & lock that video in Event folder > then return to the timelapse 1fps recording.
3. Now when you start your car for the next time, the camera will automatically STOP the timelapse parking mode. Then it will go into normal video mode automatically to start the continuous video recording.

*Collision Detection Parking Mode:

1. When you turn OFF the car's engine and turn the key to the lock position. Then the camera will STOP the continuous video recording and it will go into the impact detection mode and the camera will turn OFF.
2. Now while the camera stays in impact detection mode, if someone hits your car and if the impact reaches the set G-Sensor level, then the camera will turn ON > then it will start to record 1-min continuous video, save & lock that video in Event folder > then the camera will turn OFF.
3. Now when you start your car for the next time, the camera will automatically go back into normal video mode automatically to start the continuous video recording.

Time-Lapse Parking Mode Working Time — Off/ 1H- 24H (Default 6H)

This setting allows you to choose the Working Time of Time-Lapse Parking Mode.

GPS Information

Check the satellite number / Longitude / Latitude / Speed.

Frequency — 50HZ(Default)/ 60HZ

Here you should choose the frequency accordingly to your power supply specification used in your country based on your geographical location.

Volume — Off/ Low/ MID(Default)/ High

This feature allows you to set the volume level for the boot sound volume, prompt volume through camera's internal built-in speaker.

Voice capture associated video length — 20s(Default)/ 10s

Set the video length for voice-activated capture. To initiate video recording on the dashcam, simply say "Take a picture" using voice command.

ADAS Intelligent Driving Assistance — Off(Default)

ADAS (Advanced Driver Assistance Systems) Intelligent Driving Assistance is a feature of dash cam that provides intelligent driving assistance to the driver. It uses advanced technologies such as computer vision, machine learning, and artificial intelligence to analyze road conditions and provide real-time warnings and alerts to the driver, helping to prevent accidents and improve driving safety. The ADAS features include lane departure warning, forward collision warning, front car collision warning, and pedestrian collision warning. Please note that the pedestrian collision warning function only applies to the 90° field of view of the front camera. For ADAS calibration steps, please refer to page 35 of this manual.

Fatigue Driving Reminder— Off(Default)/ 1H/ 2H/ 4H

When you activate this feature, the dash cam will beep every 2 hours to remind you if you are experiencing fatigue while driving.

9.2 Video Stamps

Date/Time

Turn On/Off the Date/Time / Live-speed / GPS Coordinates / LINGDU logo Stamp shown on recorded files.

9.3 System Setting

Time Zone

-UTC/GMT +8:00 (Default)

-UTC/GMT -12:00 to UTC/GMT +12:00

Here you can choose your desired or local time zone setting based on UTC/ GMT value. Please make sure to adjust time zone setting.

Go to <https://www.timeanddate.com/time/map/> to find out your Correct GMT (Greenwich Mean Time) value.

Synchronize Time

It will Synchronize the phone system date/time.

SD Card Information

Storage information of memory card can be found here.

Format SD Card

The formatting process will make sure that the card's file system format is optimized for the camera.

Note: For stable performance, it is recommended that you format the memory card every 1-2 months.

WiFi Name

Here you can change the WiFi Name in APP

WiFi Password

Here you can change the WiFi Password in APP, the default password: Lndu88888

Default Setting

Reset the Dash Cam to default settings. Your recordings will not be affected.

Firmware Version

Here you can check the current firmware version installed on your camera. You will need this information in the future to check if newer version of firmware is available.



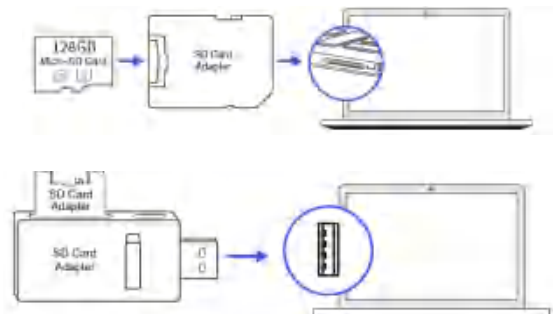
Note:

This dash cam's voice control feature only recognizes the following four English commands. You can use these commands to control the dash cam and perform specific operations.

- To stop recording, say **Turn off recording**
- To start recording, say **Open Recording**
- To take a picture, say **Take picture**
- To lock the current video files, say **Lock the video**

10. Playing Video Files Using Your Computer

1. Remove the microSD card from the dashcam.
2. Insert the card into the microSD card reader and connect it to a computer.



2. Download LINGDU GPS Player from www.lingdu.us > **Support > Downloads** and install it on your computer.
3. Install the LINGDU GPS Player on your computer. (Note: Please close or ignore the prompt of the anti-virus software, we confirm that it will not bring any security impact to your computer.)
4. You can click the 'Open Files' button to browse and select the Normal or Event folder of the microSD card on the LINGDU GPS Player. It will show all files in the Normal or Event or Parking folder. Or you can also drag the video files directly to the launcher screen.

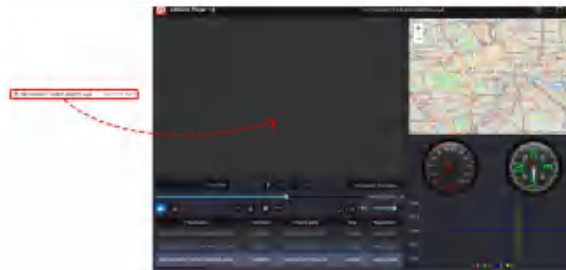
5. There are two ways to play video.

A, Click File-Open icon to choose the folder which you want to play, click to start play.

(Note that you can ONLY select one folder to play and see no video files)

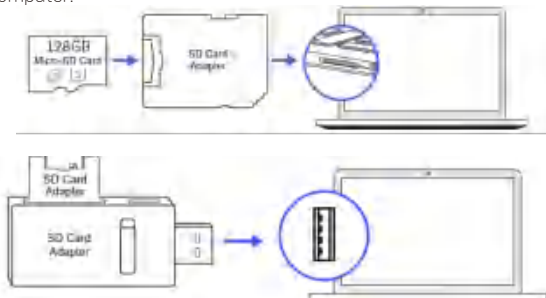


B, Select from 'My Computer' and find the memory card disk, choose the video file you want to play, you can drag and drop the file directly to the player. You can get the GPS information on the player.



11. Firmware Update

1. Remove the microSD card from the dashcam.
2. Insert the card into the microSD card reader and connect it to a computer.

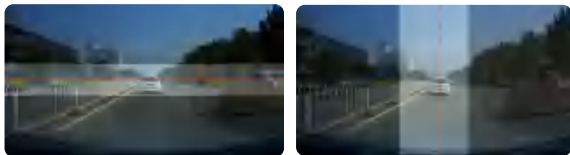


3. Download the latest AM100 Firmware from www.lingdu.us > **Support** > **Downloads** on your computer.
4. Unzip the downloaded firmware (Zip file) and copy all firmware files to the root directory of microSD card.
5. Connect the camera to the car charger to start the firmware update process. You should see the red light will be solid which means your AM100 dash camera is updating the new firmware. Please NOTE:
The firmware update may take up to about 1mins. So please be patient. Make sure the POWER does NOT get disconnected while the firmware is being updated. Once the firmware is updated, the camera will turn ON automatically.
6. You can turn on and check the latest firmware version by going into the APP's settings > Firmware Version.

12. Voice Prompts

Prompt Voice	Description
Emergency Video	During recording once G-Sensor triggered
WiFi ON	Default ON, after powered on, say it
WiFi OFF	Press and hold Wi-Fi button for 3s to switch off, say it
Memory card error	Wrong/bad/fake memory card
Recording started	After powered on and boot ringtone /operate via App, say it
Recording stopped	Operate via App, say it
Sound as "Click"	Take picture via App, say it
Format Successfully	Format memory card successfully
Format Failed	Format memory card failed

13. ADAS Intelligent Driving Assistance Calibration



ADAS Calibration Procedure

1. Install the device according to the "Installation Guide" in the manual, it is recommended to install it in the suggested location;
2. Adjust the angle of the dashcam;
3. Press the function key twice in quick succession to activate ADAS;
4. When the calibration conditions are met, the dashcam will give a voice prompt: Calibration of driving assistance begins;
5. When the calibration is successful, the dashcam will give a voice prompt: Driving assistance calibration successful.

Calibration Start Conditions

Both of the following conditions must be met:

1. Road conditions: Clear road lines on both sides of the vehicle ahead, with partial vehicle front recognition;
 2. Vehicle speed: Dashboard speed of 35 km/h (20 MPH) or above.
- Note: If road conditions and speed are not met simultaneously, the dashcam will not give a voice prompt to start calibration.

Calibration Success Conditions

1. When road conditions and vehicle speed are met simultaneously and maintained for 5 minutes, the dashcam will prompt calibration successful;
2. If there is traffic congestion or poor road conditions, the calibration time will be extended.

Calibration Failure Conditions

-If road conditions and vehicle speed are not met simultaneously, and the calibration time exceeds 30 minutes, the dashcam will give a voice prompt: Driving assistance calibration failed, please recalibrate according to the requirements.

Calibration Failure Procedure

- Recalibrate according to the "Calibration Start Conditions" or adjust the installation position and angle of the dashcam before recalibrating.



Note:

Generally, the accuracy of ADAS functions can reach over 90%, but the actual accuracy may be affected by many factors such as weather, road conditions, surrounding environment, etc. Therefore, when using ADAS functions, it is still necessary to remain highly vigilant and constantly pay attention to the road conditions to ensure driving safety.

Please note that the pedestrian collision warning function only applies to the 90° field of view of the front camera.

14. FAQ

Q1: Camera turns ON / OFF automatically?

Ensure that the output current can reach 5V/2.5A and use our car charger.

Q2: Video Image is blurred?

Remove the protective lens film, clean the lens, make sure the windshield is clean and clear of grease, dirt, and debris.

Q3: Camera gets HOT?

It is normal for your camera to run slightly hot. Due to video being recorded at high speed, the dash cam may be hot during using. (No more than 158°F/70°C).

Q4: The sound is not synchronised with video during playback?

The Codecs upon your PC may not be compatible or the latest standard. Download the latest LINGDU GPS Player from www.lingdu.us > Support > Downloads.

Q5: Video Files cannot be played on my computer?

The video files from the Dash Cam are in MP4 format and may not be compatible with your PC if suitable playback software is not installed.

Q6: Video has no sound?

Ensure that 'Record Audio' setting is turned ON. Please note that the time-lapse videos recorded in parking mode do not include audio.

Q7: Video is blurred?

The Dash Cam has a minimum focal range of around 2 meters. Objects closer than this are likely to become blurred.

Q8: Voice prompt Memory Error?

Using unqualified SD or third party cards can affect dashcam's performance and in some cases, force the dashcam to reboot randomly during recording. If it still can not work normally, it should be that the TF card is unqualified and can not meet the recording requirements of the dash cam. Please contact us to get a new memory card.

15. Notice

CE This product complies with the radio interface requirements of the European Community.

X This symbol means the product must not be discarded as household waste, and should be delivered to an appropriate and recycling helps protect natural resources, human health and the environment. For more information on disposal and recycling of this product, contact your local municipality, disposal service, or the shop where you bought this product.

FC Changes or modifications not expressly approved by the party responsible for compliance could void the user's authority to operate the equipment.

This equipment has been tested and found to comply with the limits for a Class B digital device, pursuant to Part 15 of the FCC Rules. These limits are designed to provide reasonable protection against harmful interference in a residential installation. This equipment generates, uses and can radiate

radio frequency energy and, if not installed and used in accordance with the instructions, may cause harmful interference to radio communications. However, there is no guarantee that interference will not occur in a particular installation.

If this equipment does cause harmful interference to radio or television reception, which can be determined by turning the equipment off and on, the user is encouraged to try to correct the interference by one or more of the following measures:

- Reorient or relocate the receiving antenna.
- Increase the separation between the equipment and receiver.
- Connect the equipment into an outlet on a circuit different from that to which the receiver is connected.
- Consult the dealer or an experienced radio/TV technician for help.

This device complies with Part 15 of the FCC Rules.

Operation is subject to the following two conditions: (1) this device may not cause harmful interference, and (2) this device must accept any interference received, including interference that may cause undesired operation.

This equipment complies with FCC radiation exposure limits set forth for an uncontrolled environment. This equipment should be installed and operated with a minimum distance of 20cm between the radiator & your body. This transmitter must not be co-located or operating in conjunction with any other antenna or transmitter.