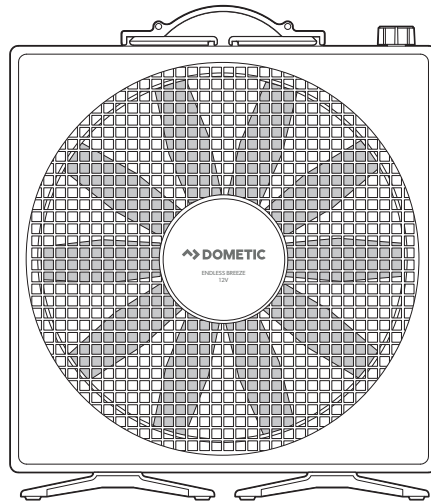


↗ DOMETIC

FANS

PORTABLE FAN



EN

Endless Breeze
Operation



NORTH AMERICAN ADDRESS INFORMATION

USA & CANADA

Service Office
Dometic Corporation
1120 North Main Street
Elkhart, IN 46514

Service Center & Dealer Locations

Visit: www.dometic.com

REVISION | Form No. 1113-01 10/17 | ©2017 Dometic Corporation



Read these instructions carefully. These instructions MUST stay with this product.

CONTENTS

1	Explanation of symbols and safety instructions	3
2	Intended use	4
3	Specifications	4
4	Operation	5
5	Care and maintenance	6
6	Replacement parts	7

1 EXPLANATION OF SYMBOLS AND SAFETY INSTRUCTIONS

This manual has safety information and instructions to help you reduce the risk of accidents and injuries.

1.1 Recognize Safety Information



This is the safety alert symbol. It is used to alert you to potential physical injury hazards. Obey all safety messages that follow this symbol to avoid possible injury or death.

1.2 Understand Signal Words

A signal word will identify safety messages and property damage messages, and will indicate the degree or level of hazard seriousness.

⚠ WARNING indicates a hazardous situation that, if **not** avoided, could result in death or serious injury.

⚠ CAUTION indicates a hazardous situation that, if **not** avoided, could result in minor or moderate injury.

NOTICE indicates information considered important, but **not** hazard related, such as damage to property.



indicates additional important information that is not related to property damage.

1.3 Supplemental Directives



Read and follow all safety information and instructions to avoid possible injury or death.

Read and understand these instructions before installation, use, or maintenance of this product.

Incorrect installation, operation, or maintenance of this product can lead to serious injury.

The installation must comply with all applicable local or national codes, including the latest edition of the following standards:

U.S.A.

- ANSI/NFPA70, National Electrical Code (NEC)
- ANSI/NFPA 1192, Recreational Vehicles Code

Canada

- CSA C22.1, Parts I & II, Canadian Electrical Code
- CSA Z240 RV Series, Recreational Vehicles

1.4 General Safety Messages

⚠ WARNING Failure to obey the following warnings could result in death or serious injury:

- ELECTRIC SHOCK HAZARD:
 - Do **not** immerse the fan in water.
 - Do **not** operate the fan outdoors.
- TRIP HAZARD. Do not route the cord through a high-traffic area.
- Do **not** allow anyone (including children) with reduced physical, sensory or mental capabilities, or lack of experience and knowledge, to use this product, unless they have been given supervision or instruction (concerning use of this product) by a person responsible for their safety.

⚠ CAUTION Failure to obey the following cautions could result in property damage or injury:

- Do **not** insert objects into the fan blades while they are in motion.
- Do **not** attempt to operate the fan without the front grate attached.

2 INTENDED USE

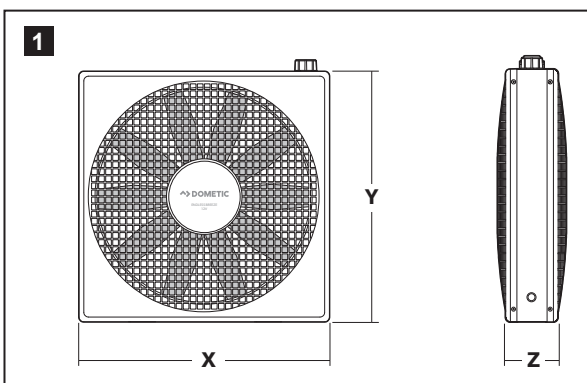
This fan is intended for use in a recreational vehicle (hereinafter referred to as "RV"), automobile, pet crate, or other similar applications. The manufacturer accepts no liability for damage in the following circumstances:

- Faulty assembly or connection.
- Damage to the product resulting from mechanical influences and/or excess voltage greater than 14.5 V.
- Alterations to the product without the expressed permission of the manufacturer.
- Use for purposes other than those described in the operating manual.

Dometic Corporation reserves the right to modify appearances and specifications without notice.

3 SPECIFICATIONS

3.1 Fan dimensions



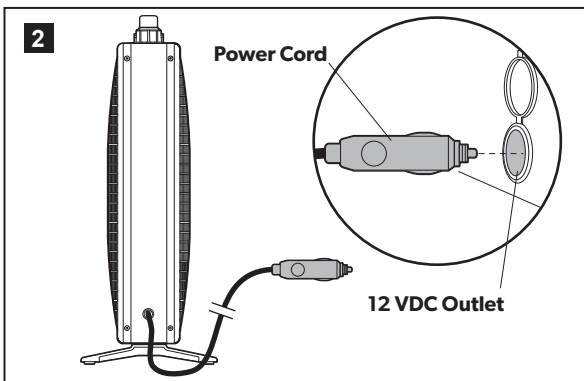
Dimensions	
X	14"
Y	14"
Z	3-1/2"

4 OPERATION

⚠ WARNING Failure to obey the following warnings could result in death or serious injury:

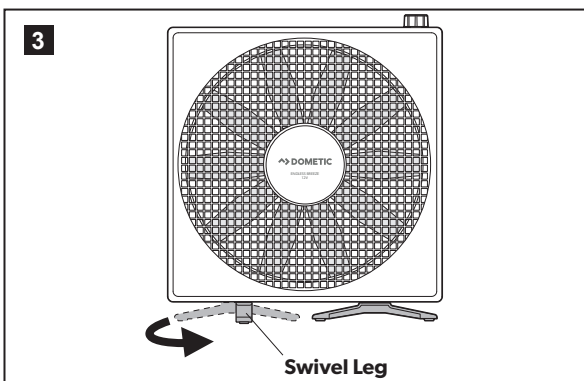
- Do **not** leave the fan unattended during operation. Doing so could result in serious injury or death to pets, livestock, or children.
- Do **not** attempt to power the fan using an AC outlet.
- Do **not** hang the fan by the cord.
- Do **not** route the cord under a blanket.

4.1 Connecting the electrical



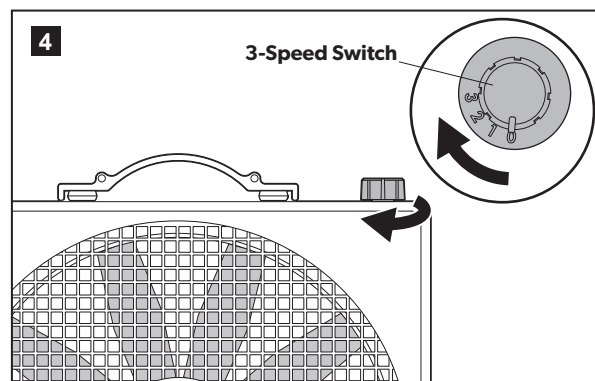
- Insert the plug into a 12 VDC outlet.

4.2 Operating the fan



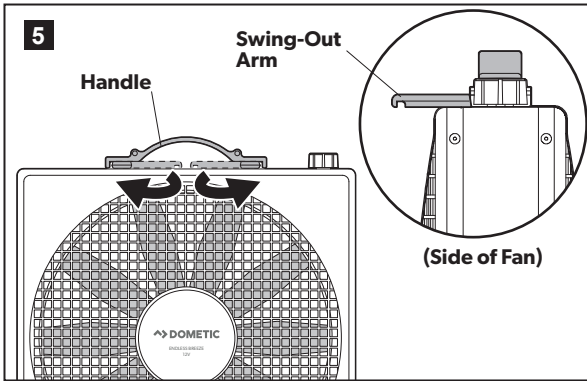
- Place the fan on a flat, sturdy surface.
- To stabilize the fan, turn the legs clockwise to the desired position.

i Turning the legs counterclockwise may loosen the screws.

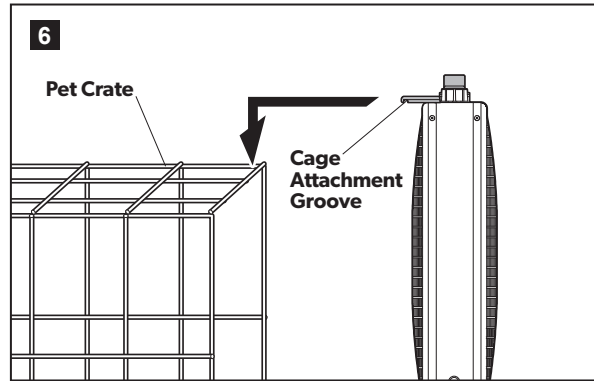


- Turn on the fan by rotating the numbered knob. Set the fan to the desired speed from 3 (high) to 1 (low).

4.3 Attaching the fan to a pet crate



- Rotate the swing-out arms toward the front of the fan to pull air through the pet crate, or toward the back of the fan to push air through the pet crate.

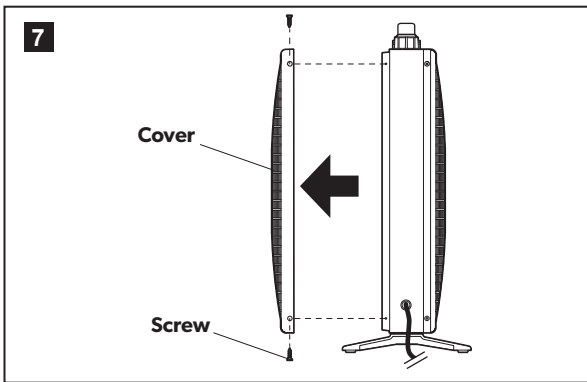


- Attach the fan to the side of the pet crate using the cage attachment grooves on the swing-out arms. Do **not** hang the fan over an open door.

5 CARE AND MAINTENANCE

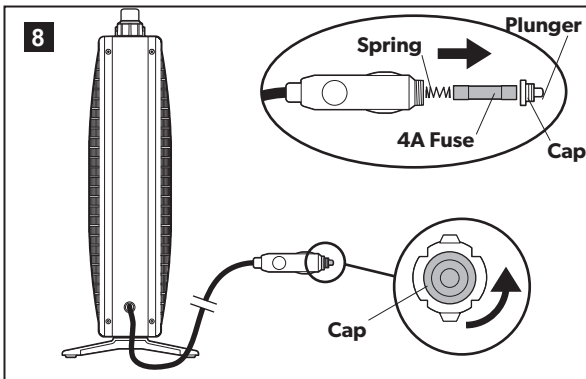
⚠ WARNING Do **not** attempt cleaning or maintenance on the fan while it is plugged in. Failure to obey this warning could result in death or serious injury.

5.1 Cleaning the fan



- Wipe the sides of the fan using a clean, damp cloth.
- Use a vacuum cleaner to clean the rear cover of the fan.
- To clean the fan blade, remove the screws securing the cover to the fan and wipe the fan blade using a clean, damp cloth.
- Alternatively, remove the fan blade by removing the screw securing the fan blade to the motor shaft. Wipe the fan blade using a clean, damp cloth, or clean it in a dish washer. Ensure that the fan blade is completely dry before reinstalling it.

5.2 Changing the fuse



- Unplug the power cord.
- Unscrew the cap from the plug body.
- Remove the 4 amp Slo-Blo fuse. Do **not** lose the spring inside the plug body.
- Insert a new 4 amp Slo-Blo fuse into the plug body. Do **not** use any other size fuse as a replacement for the original fuse.
- Re-attach the cap to the plug body.
- Verify that the cap is properly installed by pressing on the plunger. It should spring back into place.

6 REPLACEMENT PARTS

For the most current parts information, visit www.eDometic.com.



LIMITED ONE-YEAR WARRANTY (ENDLESS BREEZE FAN)

THE SELLER NAMED BELOW MAKES THE FOLLOWING WARRANTY WITH RESPECT TO THE DOMETIC PRODUCT:

1. This Warranty is made only to the first purchaser (hereinafter referred to as the "Original Purchaser"), who acquires the Dometic Product for his or her own use and when the Dometic Product is installed and operated within the continental United States and Canada.
2. **WARRANTY PERIOD:** This Warranty will be in effect for one (1) year from the date of purchase by the Original Purchaser. The Original Purchaser should retain a copy of the dated bill of sale as evidence of the date of purchase.
3. **WARRANTY:** This Warranty covers labor, specified parts, and freight. The Dometic Product shall be free from defects in material and workmanship at the time of sale and under normal use. All Dometic Products (except those specifically built for commercial use) are warranted only when installed per the Seller's installation instructions on vehicles built to R.V.I.A. A119-2 and C.R.V.A. Z-240 Standards. This Warranty does NOT cover conditions unrelated to the material and workmanship of the Dometic Product. Such unrelated conditions include, but are not limited to: (a) damage not reported within 10 days of ownership; (b) failure or damage caused by storms, rain, lightning, or any acts of God; (c) faulty installation or installation that does not comply with the Seller's instructions or R.V.I.A. and C.R.V.A. standards, and any damage resulting from such; (d) damage or failure caused by installation of accessories not manufactured and marketed by the Seller or any non-Dometic parts that are installed as replacement parts; (e) the need for normal maintenance and any damage resulting from the failure to provide such maintenance; (f) failure to follow Seller's instructions for use of this Dometic Product; (g) any accident to, or misuse of, any part of the Dometic Product and any alteration by anyone other than the Seller or its authorized representative; (h) cosmetic issues caused during installation; (i) normal wear, including scratches or dents; and (j) Dometic Product abuse.
4. **WARRANTY COVERS DOMETIC COMPONENT PARTS:** All Dometic component parts are covered under this Limited Warranty.
5. **WARRANTY REMEDY:** In order to obtain the benefits of this Warranty, the Original Purchaser has the following two options during the WARRANTY PERIOD:
 - a. Preferred option: Deliver the Dometic Product for inspection to the nearest Authorized Dometic Service Center during the Warranty Period. To obtain the location of the nearest Authorized Dometic Service Center, refer to <https://www.dometic.com/en-us/us/find-a-dealer>. The Authorized Dometic Service Center will work with the Seller to obtain Warranty coverage if a Seller defect is identified. **CONFIRM THE SERVICE CENTER IS AN AUTHORIZED DOMETIC SERVICE CENTER. DO NOT PAY THE SERVICE CENTER FOR WARRANTY REPAIRS.**
 - b. Second option: If it is not feasible under the circumstances to deliver the Dometic Product to an Authorized Dometic Service Center, please call 1-800-544-4881 for additional Warranty assistance. Seller prefers option a. first and only option b. if option a. is determined not to be feasible under the circumstances.
6. Any item returned in the manner described in paragraph 5 will be examined by the Authorized Dometic Service Center. If it is found that the returned item was defective in material and workmanship at the time of sale, the Authorized Dometic Service Center will contact the Seller for Warranty coverage. The Seller shall, at Dometic's sole option, repair or replace the Dometic Product, or refund Original Purchaser's purchase price. If the Seller determines that repairs to the Dometic Product are to be made, then only authorized Dometic parts will be used.
7. The Seller does not authorize any person or company to create any Warranty obligations or liability on its behalf. This Warranty is not extended by the length of time which you are deprived of the use of the Dometic Product.
8. **IN NO EVENT SHALL SELLER BE LIABLE FOR EITHER INCIDENTAL OR CONSEQUENTIAL DAMAGES. THIS INCLUDES ANY DAMAGE TO ANOTHER PRODUCT OR PRODUCTS RESULTING FROM SUCH A DEFECT. SOME STATES DO NOT ALLOW THE EXCLUSION OR LIMITATION OF INCIDENTAL OR CONSEQUENTIAL DAMAGES, SO THE ABOVE LIMITATIONS MAY NOT APPLY TO YOU.**
9. **ANY IMPLIED WARRANTY, INCLUDING THE IMPLIED WARRANTY OF MERCHANTABILITY AND FITNESS FOR ANY PURPOSE, IS LIMITED TO THE DURATION OF THIS LIMITED WARRANTY. SOME STATES DO NOT ALLOW LIMITATIONS ON HOW LONG AN IMPLIED WARRANTY LASTS, SO THE ABOVE LIMITATION MAY NOT APPLY TO YOU.**
10. **THIS WARRANTY GIVES SPECIFIC LEGAL RIGHTS, YOU MAY ALSO HAVE OTHER RIGHTS WHICH VARY FROM STATE TO STATE.** No action to enforce this Warranty shall be commenced later than ninety (90) days after the expiration of the Warranty Period. Claims must be submitted in writing to the Dometic Warranty Department.
11. The Seller reserves the right to change the design of any Dometic product without notice and with no obligation to make corresponding changes in Dometic products previously manufactured.

PROTECTION FOR YOUR NEW INVESTMENT

We appreciate that you have chosen to purchase a Dometic product for your recreational vehicle and we want to help you protect this wise investment. We at Dometic, back our products with one of the most comprehensive warranties in the industry. **Register your product online at: www.eDometic.com.**

Dometic Corporation

Warranty Department
1120 North Main Street
Elkhart, Indiana 46514
1-574-294-2511
Register Your Product @
www.eDometic.com

REVISION

Form No. 3317006.000 (10/17)
(French 3317007.000)
©2017 Dometic Corporation
LaGrange, IN 46761