

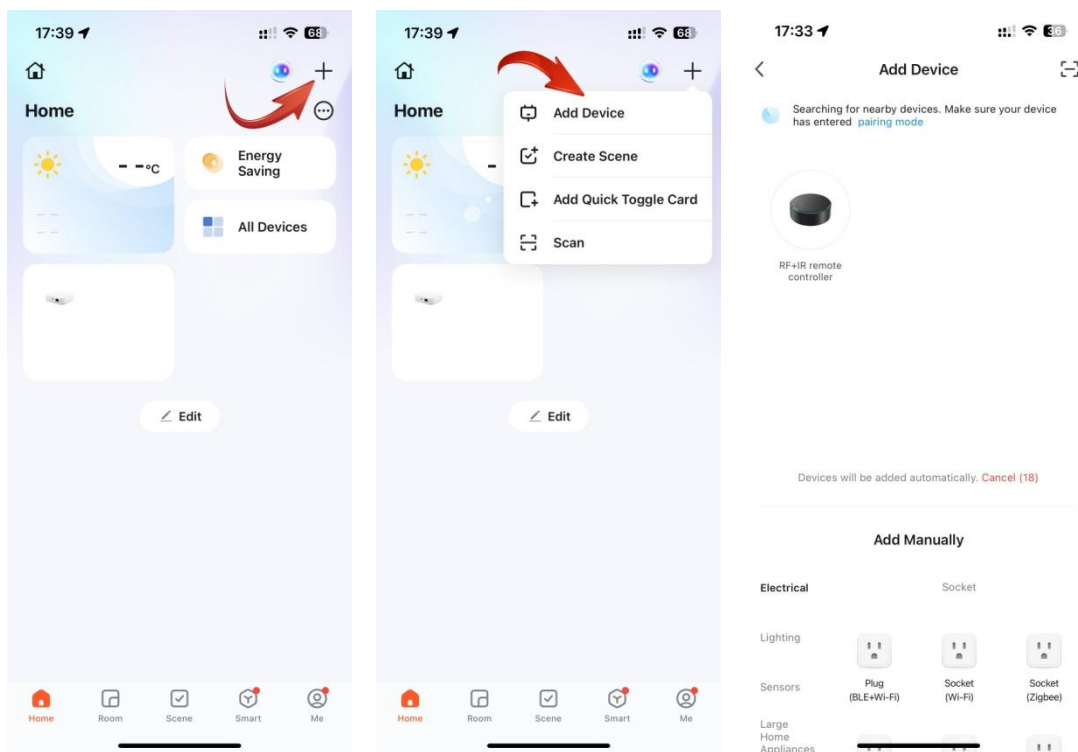
Universal infrared remote control

RF-R1 use introduction

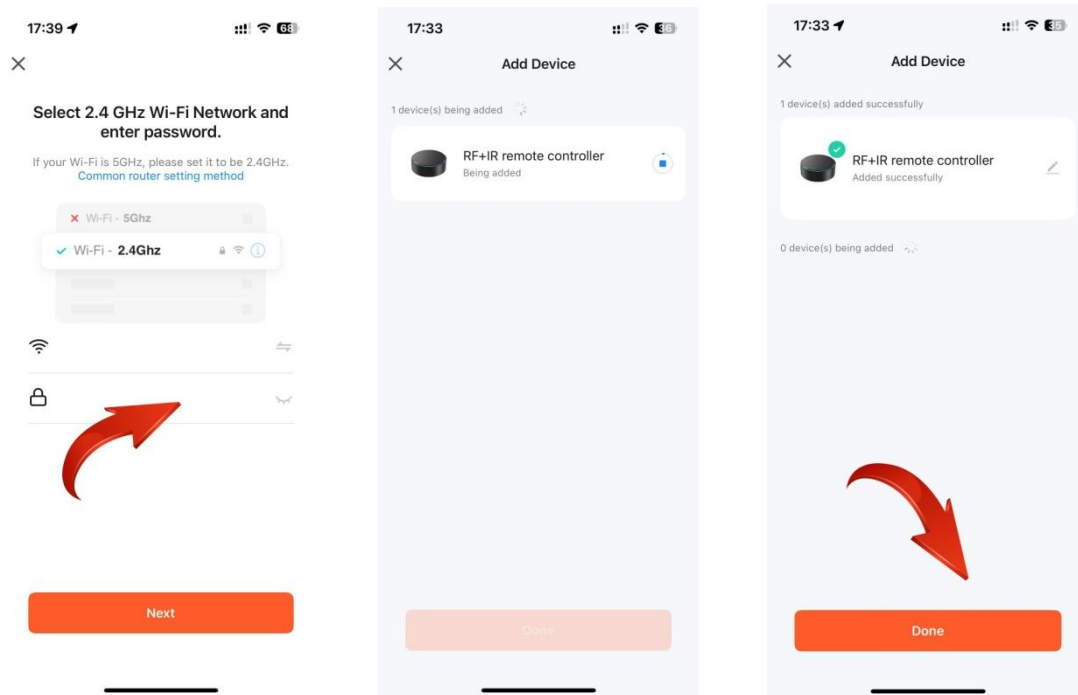


Download the Smart Life APP

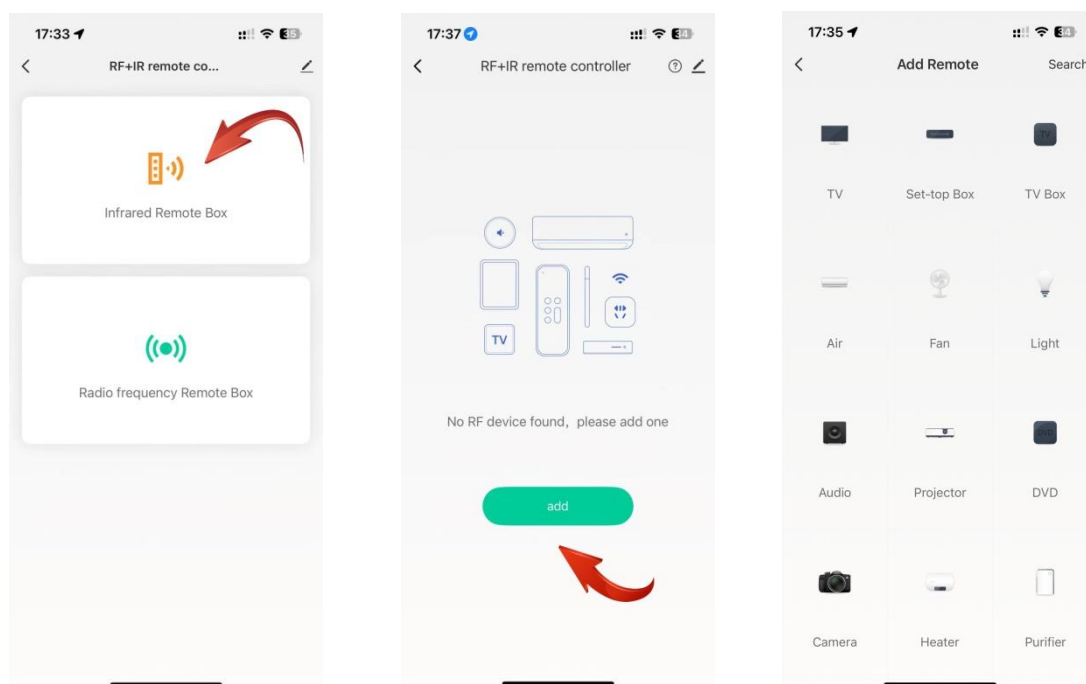
Infrared remote control pairing use introduction



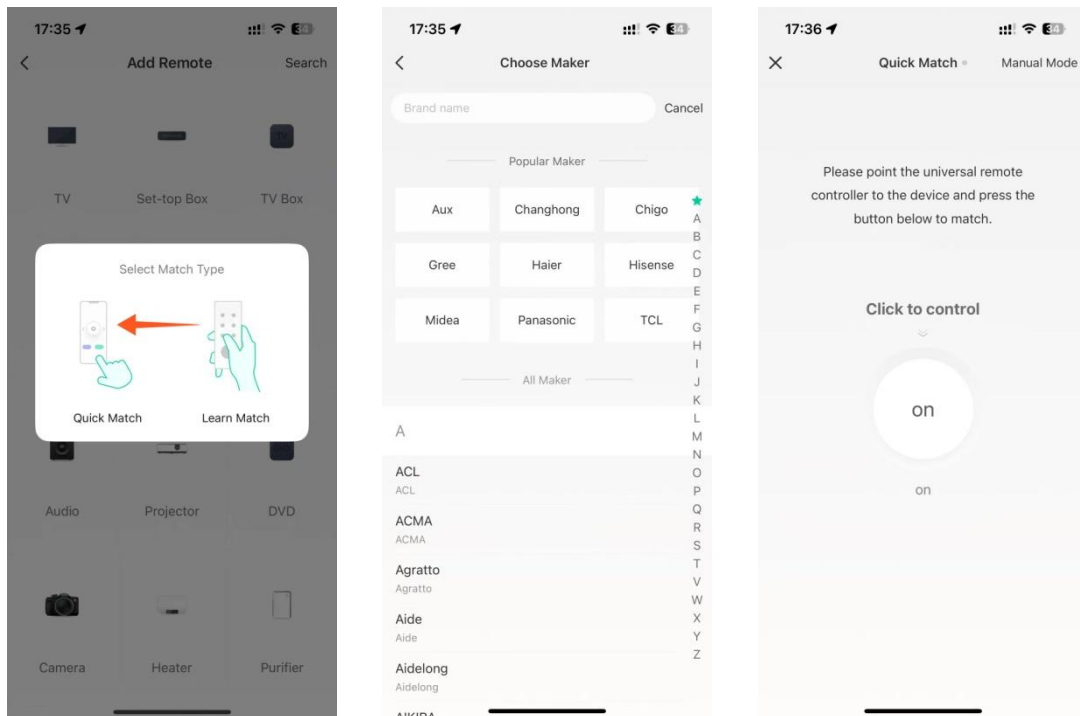
- Open the Smart Life APP, Click in the upper right corner to add a device, Automatic search to universal infrared remote control.



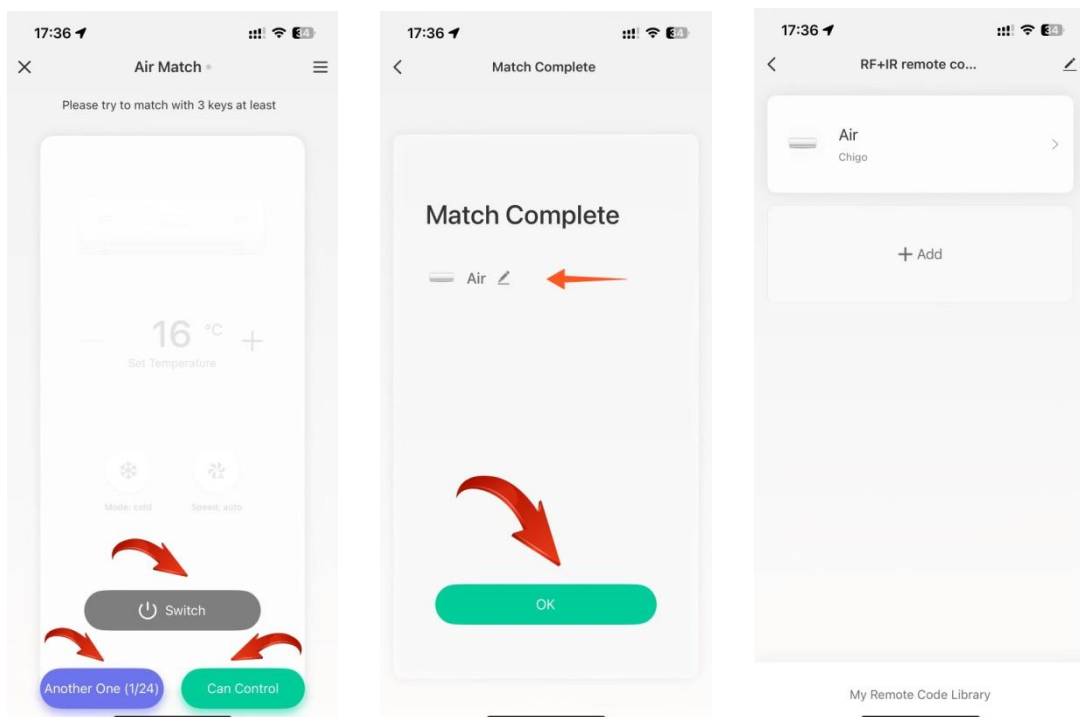
- Select 2.4G WiFi, automatically input WiFi account and password, Continue to the next step, start searching for devices.



- If the handheld remote control is infrared remote control, please click the infrared remote control, Choose the type of household appliance.

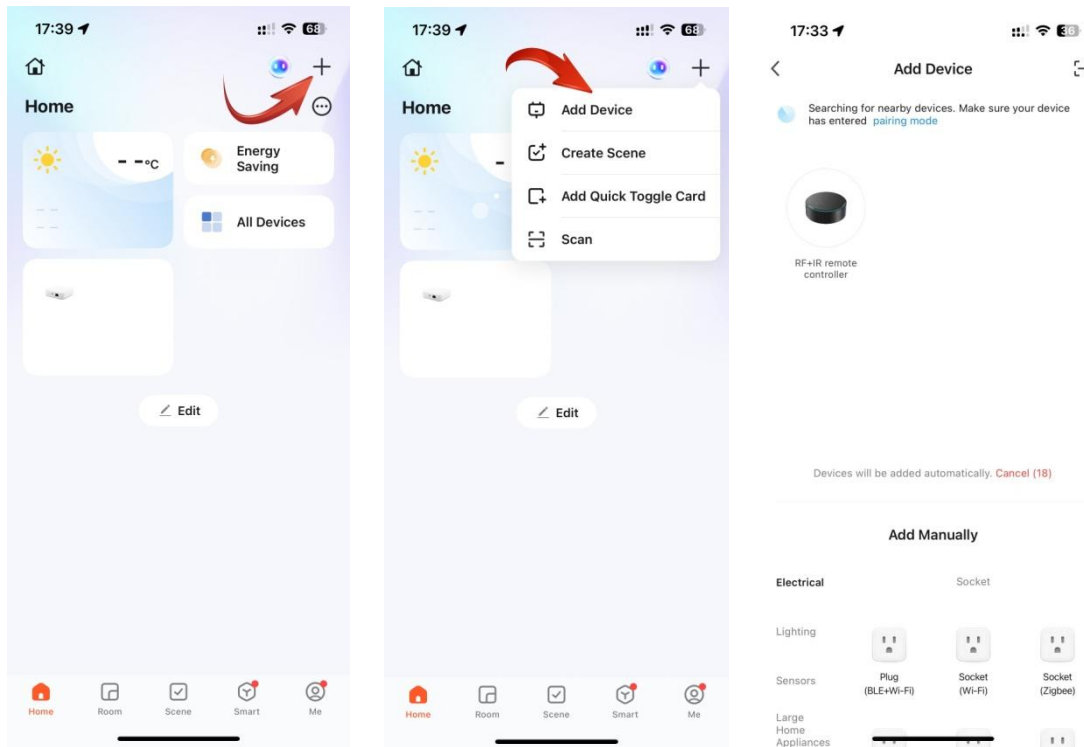


- Select Quick match, select household appliance brand, Click the switch button to check whether it can be turned on.

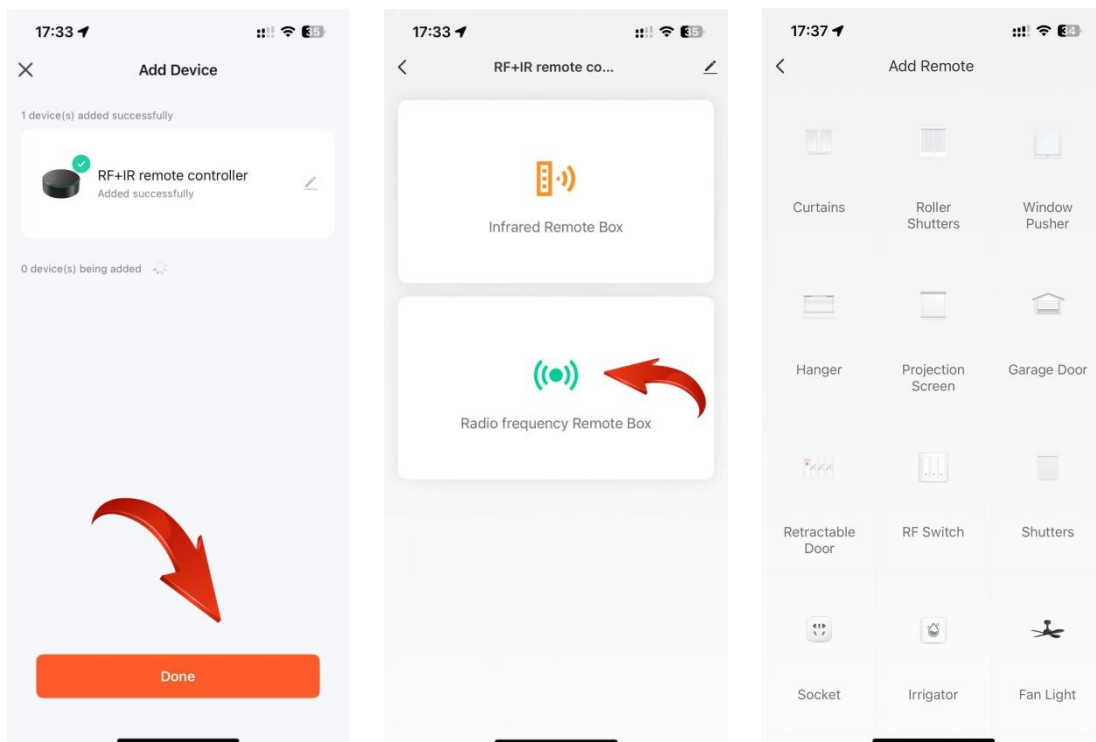


- Click the control button, Test whether you can control each function key, After the appliance is successfully added, you can change its name. All right, the infrared home appliance was added.

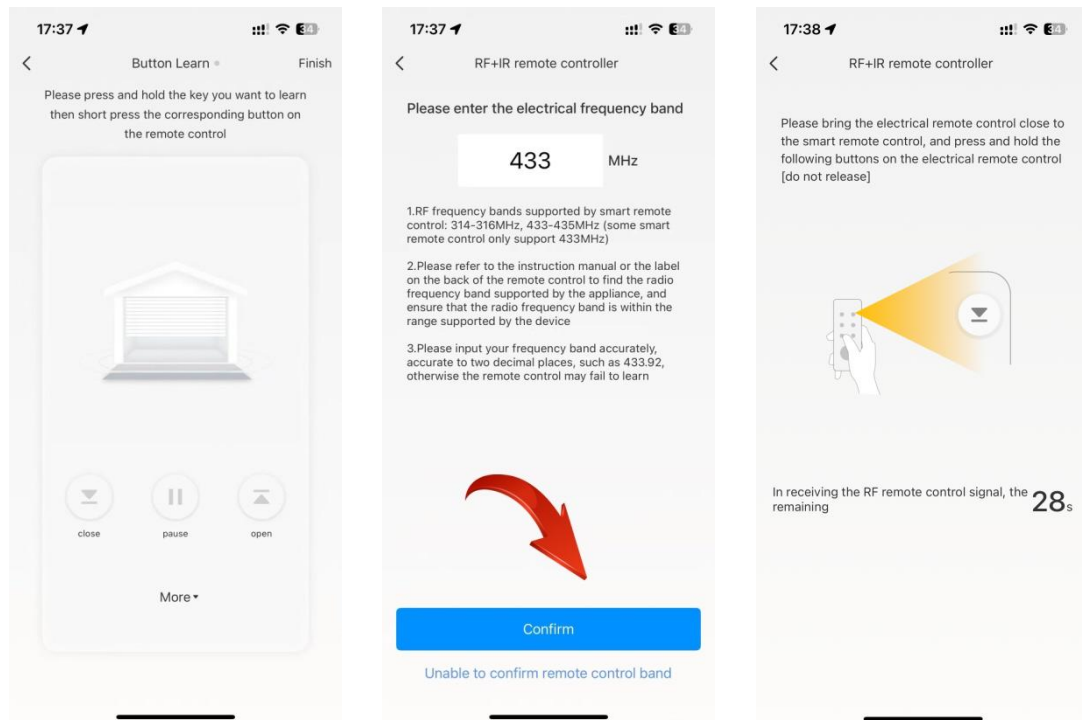
RF remote control pairing use introduction



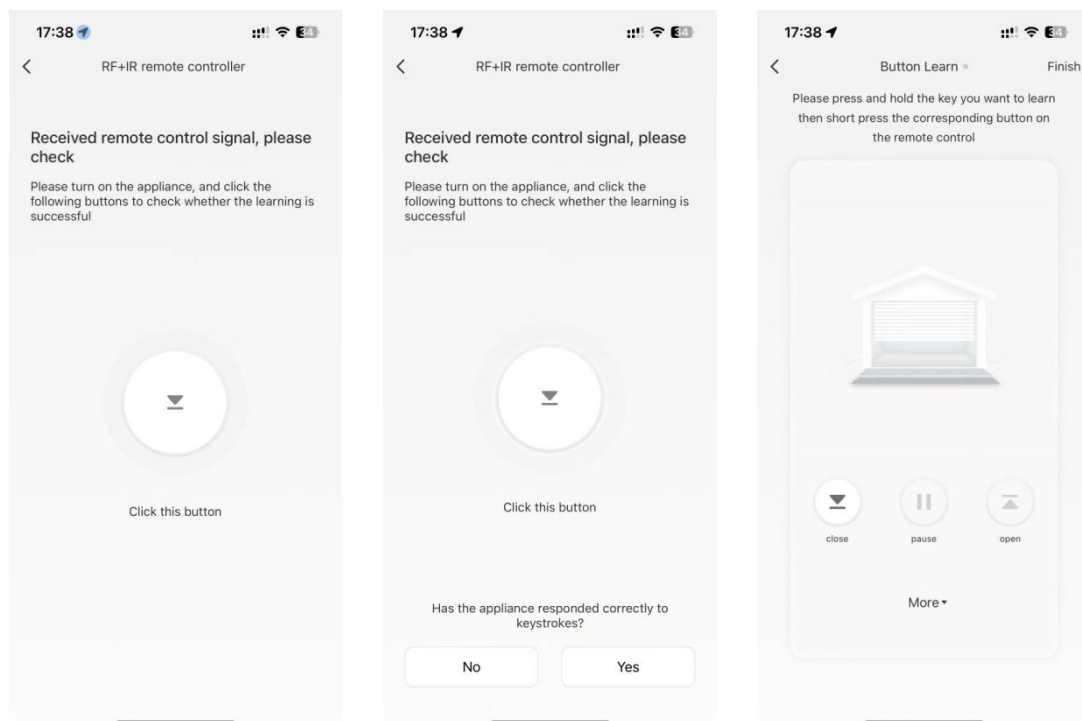
- Open the Smart Life APP, Click in the upper right corner to add a device.



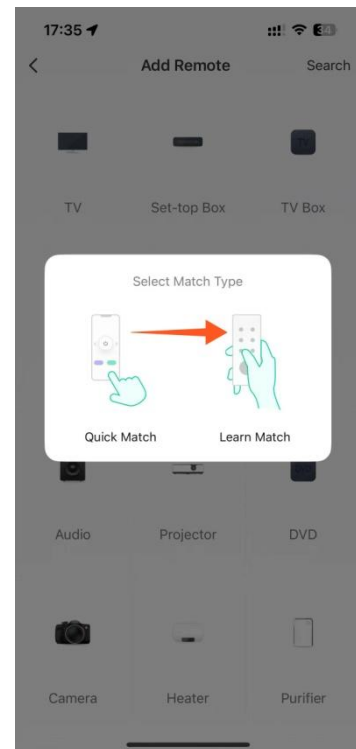
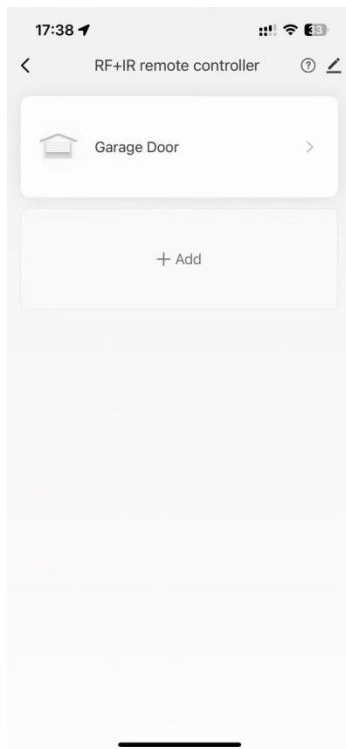
- Select the RF remote control, select the type of household appliance.



Suppose you choose the garage door, and its remote control is 433 band, Please enter 433 in the frequency band, Point the handheld remote control at the universal remote control, Hold down one of the function keys for 3 seconds.



- Then, the function keys on the garage door radio frequency remote control are copied successfully, Follow this to copy the next function key.



● Okay, The garage door remote control page appears in the list , you can control the garage door from the APP。

● If you want to pair by learning method, Please select on the pairing page "Learn Match", Then follow the previous steps in order, You can complete the learning pairing。

Thanks