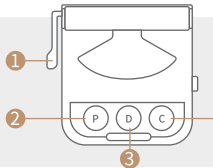




Q1 LABEL PRINTER INSTRUCTIONS

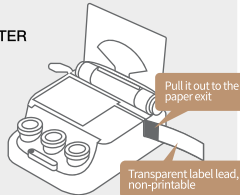
Step1. INSTRUCTIONS

- 1 Cutter
- 2 Power On/Off
- 3 Date
- 4 Custom

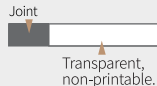


Step2. INSTALL THE LABELS & POWER ON THE PRINTER

- 1 When using a new roll of label, pull out the transparent label lead all the way to the paper exit.
- 2 Long press the Power On/Off button to turn off the printer.



- ⚠ The red light will be on if the label is not installed or if it is installed incorrectly.



Don't miss the back ➤

Step3. CONNECT TO APP

- 1 Open the APP and connect to the printer (remember to grant Bluetooth permission).
- 2 Click on the right top of the APP to search for the device, and then click to connect.
- ⚠ It will not work if connect to Bluetooth in settings.



The Bluetooth permission is only used to connect to the device, please feel free to use.

Step4. APP DOWNLOAD



- 1 Scan the QR code below to download the APP directly.
- 2 You may go to Android/Apple APP Store to search for "MakelD-Life" and to download the APP.
- ⚠ Can only be used with "MakelD-Life" APP, cannot be used with computer.

Today is the right time to start a label printer journey.