

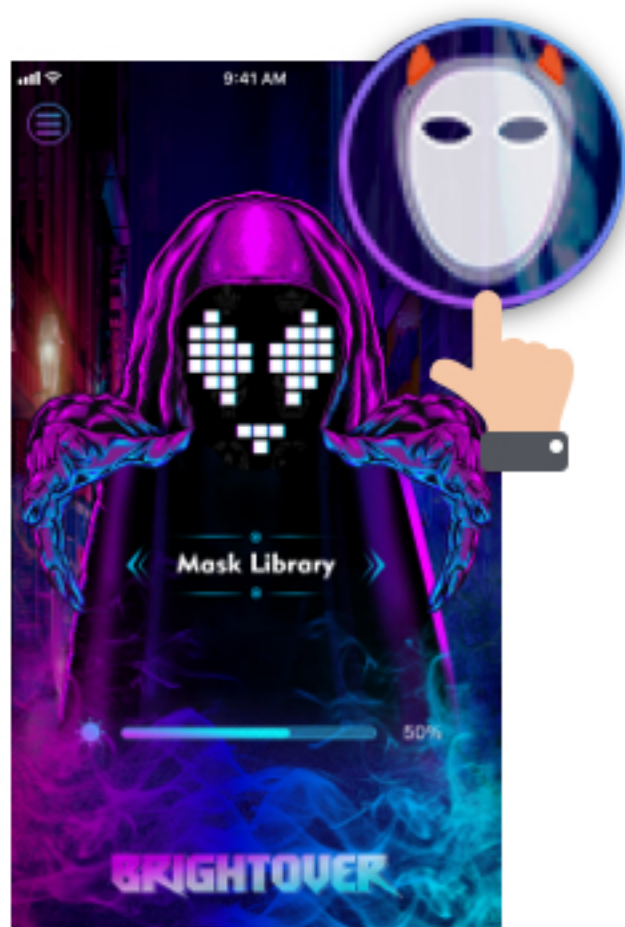
How to Connect to Bluetooth with BrightOver



In order for the pattern to appear on the mask, you need to connect to the mask Bluetooth using the BrightOver app. Follow these steps to connect:



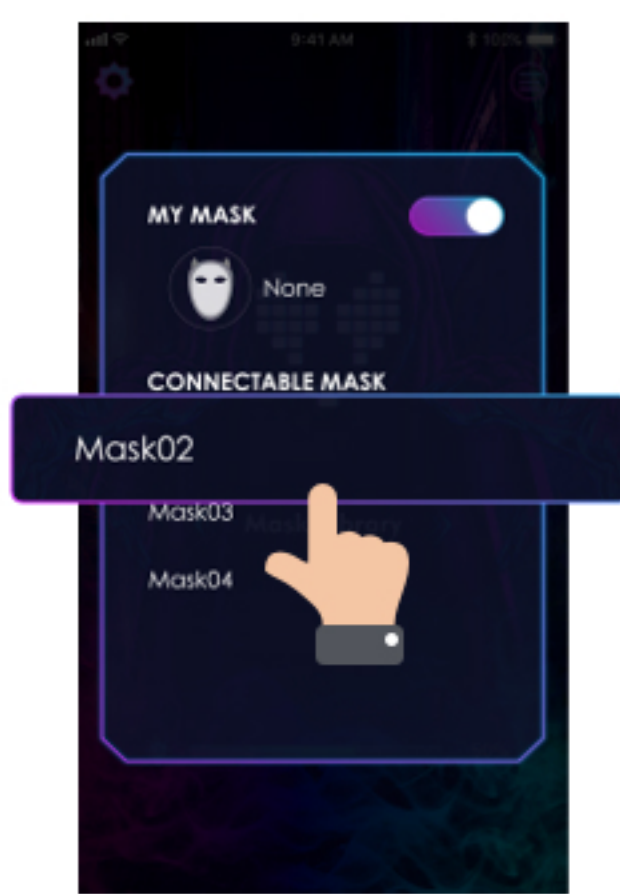
Step 1: Please download and install BrightOver App for free on the App Store or Google Play;



Step 2: After opening the app, register an account and log in, then click the "+" icon to connect the device;



Step 3: Press and hold the power button for 5 seconds to turn on the mask;



Step 4: Turn on the Bluetooth switch and select "Mask02" Bluetooth connection.

Kind tips: After turning on the device, press and hold the device power button for 5 seconds, the LED dot matrix area will display the Bluetooth name.