

# Product Guide

## SoftZone® Climb & Crawl Play Set ELR-12683

### IMPORTANT INFORMATION

Read all instructions before beginning assembly. Keep instructions for future use.

### SUGGESTED USE

- Designed for preschool age children.
- Encourages climbing, crawling, social interaction and develops gross motor skills.
- Five piece set includes a slide, cylinder, hemisphere and rectangular prism that configure in multiple ways for children to explore.

### ⚠ WARNING

- ▲ Adult supervision required.
- ▲ Indoor use only.
- ▲ Shoes should not be worn on SoftZone® items.

### Maintenance

Check for worn pieces or seams periodically. Remove the product from service when any condition develops that might deem operation unsafe.

### Construction

Soft and sturdy foam upholstered with reinforced phthalate-free soft leather. Special non-slip material makes it easier to find the 'floor side' and helps reduce slipping and sliding.

### Care and Cleaning

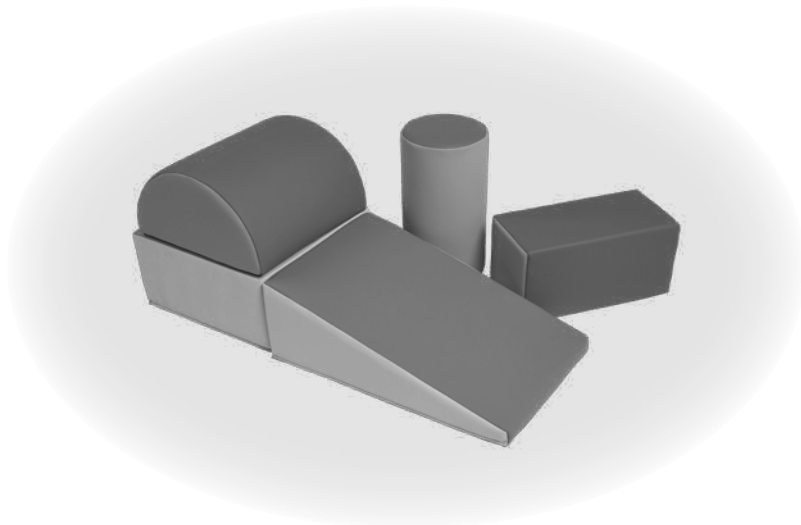
Clean surface with a soft cloth and warm water/mild liquid soap solution. To disinfect use up to a 10:1 water/household bleach solution.

When cleaning or disinfecting, be sure to thoroughly rinse with a clean wet cloth to remove any/all residual chemicals, dry with a soft cloth.

### Registration & Warranty

Get the most out of ECR4Kids products by registering at [www.ecr4kids.com/registration](http://www.ecr4kids.com/registration).

1-Year Limited Warranty.



## Customer Service



ECR4Kids, L.P.  
2245 San Diego Avenue, Suite 125  
San Diego, CA 92110  
United States



619-323-2005  
option 1 for customer service



Customer Service  
[ecrcs@ecr4kids.com](mailto:ecrcs@ecr4kids.com)  
Sales & Marketing  
[sales@ecr4kids.com](mailto:sales@ecr4kids.com)  
General Inquiries  
[info@ecr4kids.com](mailto:info@ecr4kids.com)

**ECR  
4 KIDS**  
[www.ecr4kids.com](http://www.ecr4kids.com)