

### **User Manual of Product 1:**

StarTech.com Standalone Hard Drive Duplicator, External Dual Bay HDD/SSD Cloner/Copier, USB 3.1 (10Gbps) to SATA III HDD/SSD Docking Station, Hard Disk Cloning / Recovery (SDOCK2U313R)

### **User Manual of Product 2:**

StarTech.com SATA to USB Cable - USB 3.0 to 2.5" SATA III Hard Drive Adapter - External Converter for SSD/HDD Data Transfer (USB3S2SAT3CB)

## USB 3.1 (10Gbps) Standalone Duplicator Dock for 2.5" and 3.5" SATA Drives

SDOCK2U313R



\*actual product may vary from photos

FR: Guide de l'utilisateur - [fr.startech.com](http://fr.startech.com)

DE: Bedienungsanleitung - [de.startech.com](http://de.startech.com)

ES: Guía del usuario - [es.startech.com](http://es.startech.com)

NL: Gebruiksaanwijzing - [nl.startech.com](http://nl.startech.com)

PT: Guia do usuário - [pt.startech.com](http://pt.startech.com)

IT: Guida per l'uso - [it.startech.com](http://it.startech.com)

For the latest information, technical specifications, and support for this product, please visit [www.startech.com/SDOCK2U313R](http://www.startech.com/SDOCK2U313R).

## FCC Compliance Statement

This equipment has been tested and found to comply with the limits for a Class B digital device, pursuant to part 15 of the FCC Rules. These limits are designed to provide reasonable protection against harmful interference in a residential installation. This equipment generates, uses and can radiate radio frequency energy and, if not installed and used in accordance with the instructions, may cause harmful interference to radio communications. However, there is no guarantee that interference will not occur in a particular installation. If this equipment does cause harmful interference to radio or television reception, which can be determined by turning the equipment off and on, the user is encouraged to try to correct the interference by one or more of the following measures:

- Reorient or relocate the receiving antenna.
- Increase the separation between the equipment and receiver.
- Connect the equipment into an outlet on a circuit different from that to which the receiver is connected.
- Consult the dealer or an experienced radio/TV technician for help

This device complies with part 15 of the FCC Rules. Operation is subject to the following two conditions: (1) This device may not cause harmful interference, and (2) this device must accept any interference received, including interference that may cause undesired operation.

Changes or modifications not expressly approved by StarTech.com could void the user's authority to operate the equipment.

## Industry Canada Statement

This Class B digital apparatus complies with Canadian ICES-003.

Cet appareil numérique de la classe [B] est conforme à la norme NMB-003 du Canada.

CAN ICES-3 (B)/NMB-3(B)

## Use of Trademarks, Registered Trademarks, and other Protected Names and Symbols

This manual may make reference to trademarks, registered trademarks, and other protected names and/or symbols of third-party companies not related in any way to StarTech.com. Where they occur these references are for illustrative purposes only and do not represent an endorsement of a product or service by StarTech.com, or an endorsement of the product(s) to which this manual applies by the third-party company in question. Regardless of any direct acknowledgement elsewhere in the body of this document, StarTech.com hereby acknowledges that all trademarks, registered trademarks, service marks, and other protected names and/or symbols contained in this manual and related documents are the property of their respective holders.

# Table of Contents

<b>Introduction</b> .....	<b>1</b>
Packaging contents .....	1
System requirements .....	1
<b>Product diagram</b> .....	<b>2</b>
Front view .....	2
Rear view .....	3
<b>Installation</b> .....	<b>4</b>
Connect the duplicator dock .....	4
Install a drive .....	4
Prepare a drive for use .....	4
<b>Using the duplicator dock</b> .....	<b>6</b>
Duplicate a drive .....	6
Remove a drive from your computer .....	6
<b>About the LED indicators</b> .....	<b>7</b>
<b>Technical support</b> .....	<b>8</b>
<b>Warranty information</b> .....	<b>8</b>

# Introduction

## Packaging contents

- 1 x USB 3.1 duplicator docking station
- 1 x universal power adapter (NA/EU/UK/AU)
- 1 x USB C to B cable
- 1 x USB A to B cable
- 1 x quick start guide

## System requirements

- Computer system with a USB port
- Up to two 2.5 in. or 3.5 in. SATA hard drives (HDD) or solid-state drives (SSD)

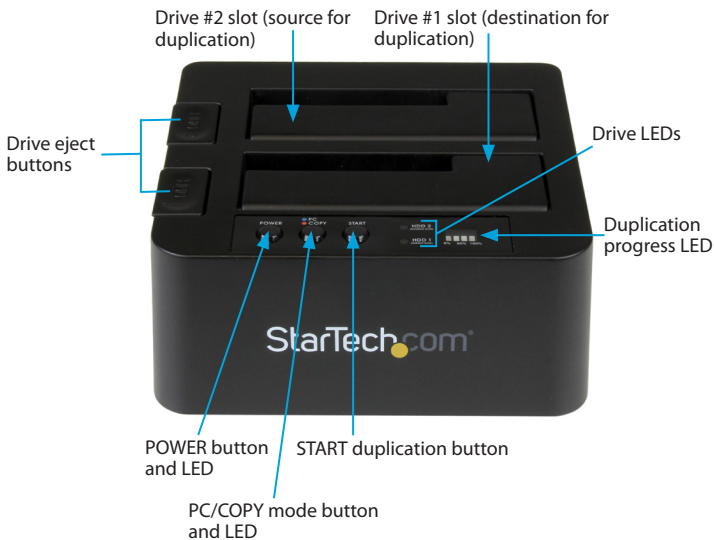
The SDOCK2U313R is OS independent and doesn't require any additional drivers or software.

**Note:** To obtain the maximum USB throughput, you must use a computer with a USB 3.1 Gen 2 (10Gbps) port.

System requirements are subject to change. For the latest requirements, please visit [www.startech.com/SDOCK2U313R](http://www.startech.com/SDOCK2U313R).

# Product diagram

## Front view



## Rear view



USB 3.1 Gen 2 port

Power adapter port

# Installation

## Connect the duplicator dock

**Warning!** Drives and storage enclosures should be handled carefully, especially when they're transported. If you're not careful with your drives, you may lose data as a result. Always handle storage devices with caution.

1. Connect the external power adapter from the duplicator dock to a power outlet.
2. Connect one of the included USB 3.1 cables from the duplicator dock to a USB port on your computer system. Your computer can either be turned on or turned off when you connect the USB cable.
3. Press the **POWER** button on the top of the duplicator dock. The LED indicators should light up to indicate that the dock is turned on.

## Install a drive

1. Carefully align a 2.5 in. or 3.5 in. SATA drive with a drive slot on the duplicator dock, so that the SATA power and data connectors on the drive are aligned with the corresponding connectors that are inside of the drive slot.
2. Insert the 2.5 in. or 3.5 in. SATA drive into one of the drive slots.

**Note:** If you're connecting drives for duplication, place the drive containing the data that you intend to copy from in the drive #2 slot, and place the drive that you intend to copy the data to in the drive #1 slot.

3. Press the **POWER** button to turn on the duplicator dock.

After the drive is installed and the duplicator dock is turned on, your computer automatically recognizes the drive and it's accessible as though the drive is installed internally in the system. If your computer doesn't automatically recognize the drive, your drive probably wasn't initialized or was formatted incorrectly.

**Note:** When you have two drives installed in the duplicator dock and you remove one of the drives, the other drive temporarily disconnects as well.

## Prepare a drive for use

If you install a drive that already has data on it, after you plug in the drive, it appears under **My Computer** or **Computer** with a drive letter assigned to it.

If you install a brand-new drive that doesn't contain any data, you must prepare the drive for use.

If you use a computer that's running a version of Windows®, do the following:

1. On the taskbar, click the **Windows** icon.
2. In the **Search** field, type **disk management**.
3. In the search results, click **Disk Management**.

4. A dialog window appears and asks you to initialize the drive. Depending on the version of Windows that you're running, you have the option to create either an **MBR** or a **GPT** disk.

**Note:** GPT (GUID partition) is required for drives larger than 2 TB but GPT isn't compatible with some earlier versions of operating systems. MBR is supported by both earlier and later versions of operating systems.

5. Locate the disk that is labeled **Unallocated**. To confirm that the drive is the correct one, check the drive capacity.
6. Right-click the section of the window that says **Unallocated** and click **New Partition**.
7. To initialize the drive in the format of your choice, complete the on-screen instructions.

When the drive is successfully installed, it appears under **My Computer** or **Computer** with a drive letter assigned to it.

# Using the duplicator dock

## Duplicate a drive

1. Install the source and destination drives as per the instructions in the *Install a drive* topic.

**Note:** If you're connecting drives for duplication, place the drive containing the data that you intend to copy from in the drive #2 slot, and place the drive that you intend to copy the data to in the drive #1 slot.

2. Turn on the docking station.
3. Press the **PC/Copy mode** button for 3 seconds until the **PC/COPY mode** LED is illuminated red.
4. Wait for the **Drive LEDs** for each drive to be illuminated blue before proceeding to step 5.

**Note:** It may take up to 10 seconds for the LEDs to illuminate.

5. Press the **START duplication** button to begin duplicating.

The Duplication progress LED indicates how much of the process is complete. When the drive is duplicated, the entire LED bar will be illuminated.

If the destination drive is smaller than the source drive, the LED for the drive that you're duplicating data to will blink red to indicate an error.

## Remove a drive from your computer

**Note:** Make sure that the drive that you want to remove isn't being accessed by the computer before you proceed.

1. To remove the drive from your operating system, do one of the following:
  - On computers running a version of Windows, in your **System** tray, click **Safely Remove Device**.
  - On computers running a version of Mac OS, on your desktop, drag the drive to the **trash can** icon.
2. Press the **POWER** button on the top of the duplicator dock and wait for the dock to finish shutting off.
3. To release the drive, press the **Drive eject** button on the top of the duplicator dock.
4. Pull the drive from the drive slot.

**Warning!** Don't remove your drive from the duplicator dock if the **POWER** button LED is blinking, as doing so could damage your drive and result in data loss.

# About the LED indicators

The SDOCK2U313R includes five LED indicators: a power LED, a PC/COPY mode LED, two drive activity LEDs, and a duplication progress LED. For more information about what the LED indicators represent, consult the table below.

State	POWER button LED	PC/COPY LED	Drive 1 (destination for duplication)		Drive 2 (source for duplication)	
			Blue LED	Red LED	Blue LED	Red LED
PC mode Turned on and ready	Solid blue	Solid blue	On	Off	On	Off
PC mode Drives are active	Solid blue	Solid blue	On	Blinking	On	Blinking
Duplication mode Turned on and ready	Solid blue	Solid red	On	Off	On	Off
Duplication mode Start duplication	Solid blue	Solid red	On	Blinking	On	Blinking
Duplication mode error on drive 1	Solid blue	Solid red	Off	Solid red	On	No change
Duplication mode error on drive 2	Solid blue	Solid red	On	No change	Off	Solid red
Duplication mode Target too small	Solid blue	Solid red	On	Blinking	On	Off

# Technical support

StarTech.com's lifetime technical support is an integral part of our commitment to provide industry-leading solutions. If you ever need help with your product, visit [www.startech.com/support](http://www.startech.com/support) and access our comprehensive selection of online tools, documentation, and downloads.

For the latest drivers/software, please visit [www.startech.com/downloads](http://www.startech.com/downloads)

## Warranty information

This product is backed by a two-year warranty.

StarTech.com warrants its products against defects in materials and workmanship for the periods noted, following the initial date of purchase. During this period, the products may be returned for repair, or replacement with equivalent products at our discretion. The warranty covers parts and labor costs only. StarTech.com does not warrant its products from defects or damages arising from misuse, abuse, alteration, or normal wear and tear.

### Limitation of Liability

In no event shall the liability of StarTech.com Ltd. and StarTech.com USA LLP (or their officers, directors, employees or agents) for any damages (whether direct or indirect, special, punitive, incidental, consequential, or otherwise), loss of profits, loss of business, or any pecuniary loss, arising out of or related to the use of the product exceed the actual price paid for the product. Some states do not allow the exclusion or limitation of incidental or consequential damages. If such laws apply, the limitations or exclusions contained in this statement may not apply to you.

Hard-to-find made easy. At StarTech.com, that isn't a slogan. It's a promise.

StarTech.com is your one-stop source for every connectivity part you need. From the latest technology to legacy products — and all the parts that bridge the old and new — we can help you find the parts that connect your solutions.

We make it easy to locate the parts, and we quickly deliver them wherever they need to go. Just talk to one of our tech advisors or visit our website. You'll be connected to the products you need in no time.

Visit [www.startech.com](http://www.startech.com) for complete information on all StarTech.com products and to access exclusive resources and time-saving tools.

*StarTech.com is an ISO 9001 Registered manufacturer of connectivity and technology parts. StarTech.com was founded in 1985 and has operations in the United States, Canada, the United Kingdom and Taiwan servicing a worldwide market.*

## USB 3.0 to 2.5" SATA HDD/SSD Cable w/UASP

USB3S2SAT3CB



\*actual product may vary from photos

DE: Bedienungsanleitung - [de.startech.com](http://de.startech.com)

FR: Guide de l'utilisateur - [fr.startech.com](http://fr.startech.com)

ES: Guía del usuario - [es.startech.com](http://es.startech.com)

IT: Guida per l'uso - [it.startech.com](http://it.startech.com)

NL: Gebruiksaanwijzing - [nl.startech.com](http://nl.startech.com)

PT: Guia do usuário - [pt.startech.com](http://pt.startech.com)

For the most up-to-date information, please visit: [www.startech.com](http://www.startech.com)

## FCC Compliance Statement

This equipment has been tested and found to comply with the limits for a Class B digital device, pursuant to part 15 of the FCC Rules. These limits are designed to provide reasonable protection against harmful interference in a residential installation. This equipment generates, uses and can radiate radio frequency energy and, if not installed and used in accordance with the instructions, may cause harmful interference to radio communications. However, there is no guarantee that interference will not occur in a particular installation. If this equipment does cause harmful interference to radio or television reception, which can be determined by turning the equipment off and on, the user is encouraged to try to correct the interference by one or more of the following measures:

- Reorient or relocate the receiving antenna.
- Increase the separation between the equipment and receiver.
- Connect the equipment into an outlet on a circuit different from that to which the receiver is connected.
- Consult the dealer or an experienced radio/TV technician for help.

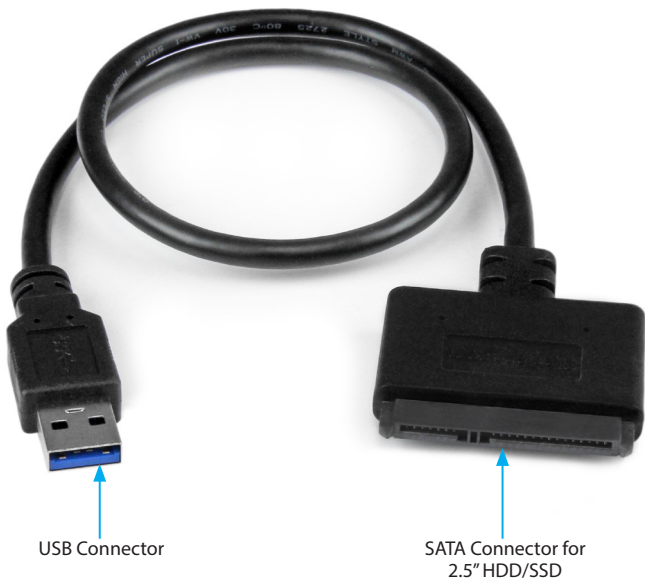
## Use of Trademarks, Registered Trademarks, and other Protected Names and Symbols

This manual may make reference to trademarks, registered trademarks, and other protected names and/or symbols of third-party companies not related in any way to StarTech.com. Where they occur these references are for illustrative purposes only and do not represent an endorsement of a product or service by StarTech.com, or an endorsement of the product(s) to which this manual applies by the third-party company in question. Regardless of any direct acknowledgement elsewhere in the body of this document, StarTech.com hereby acknowledges that all trademarks, registered trademarks, service marks, and other protected names and/or symbols contained in this manual and related documents are the property of their respective holders.

# Table of Contents

<b>Product Overview .....</b>	<b>1</b>
<b>Introduction .....</b>	<b>2</b>
Packaging Contents .....	2
System Requirements.....	2
<b>Installation .....</b>	<b>3</b>
Hardware Installation .....	3
<b>Operation .....</b>	<b>3</b>
Connecting the Hard Drive.....	3
Powering the Drive Enclosure .....	3
Disconnecting the Hard Drive .....	4
Initializing the Hard Drive .....	4
<b>Specifications.....</b>	<b>6</b>
<b>Technical Support .....</b>	<b>7</b>
<b>Warranty Information.....</b>	<b>7</b>

# Product Overview



# Introduction

## Packaging Contents

- 1x USB 3.0 to SATA 2.5" HDD Adapter Cable
- 1x Instruction Manual

## System Requirements

- Computer system with available USB 3.0 (5 Gbit/s) port or USB 2.0 port (480Mbps)
- 2.5" SATA hard drive or solid state drive
- Microsoft® Windows® 2000/XP/Server 2003/Vista/Server 2008 R2/7/8 (32/64-bit), or Apple® Mac® OS 9.x/10, or Linux®

# Installation

## Hardware Installation

**WARNING!** Hard drives and storage enclosures require careful handling, especially when being transported. If you are not careful with your hard disk, lost data may result. Always handle your hard drive and storage device with caution. Be sure that you are properly grounded by wearing an anti-static strap when handling computer components or discharge yourself of any static electricity build-up by touching a large grounded metal surface (such as the computer case) for several seconds.

**Note:** This adapter cable will only work with 2.5" hard drives, and solid state drives. 3.5" Hard drives and optical drives require a high power load than can be provided via the USB bus.

1. Connect the SATA Connector to the SATA reciprocal on your 2.5" SATA hard drive/ solid state drive.
2. Connect the USB connector from the cable to a USB port on the host computer system (optimal performance with USB 3.0, backward compatible with USB 2.0/1.1).

## Operation

### Connecting the Hard Drive

Once the cable has been attached to a computer, and the necessary software will automatically install, and the drive will be accessible as though it were installed within the system.

Prior to using the drive, it will need to be formatted according to your operating system requirements. To format your newly attached hard drive, or create partitions, please consult the documentation that accompanied your operating system at the time of purchase.

### Powering the Drive

The hard drive adapter requires no external power supply, as it is capable of receiving enough power from the USB Bus to which it is connected

# Disconnecting the Hard Drive

## Windows

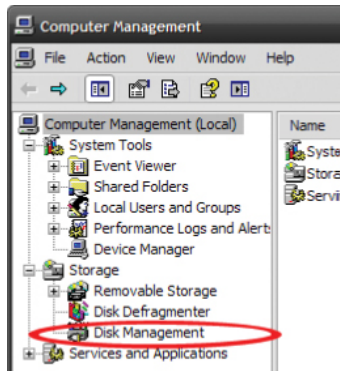
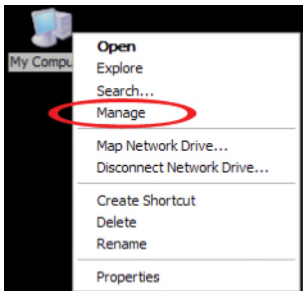
1. Select the “Safely remove Hardware and Eject Media” icon, located in the task bar.
2. Select the USB Storage Device from the list that appears.
3. Wait for the message indicating that it is now safe to remove the device.  
**Note:** Removing the connected drive prior to receiving notification that it is safe to do so, could result in losing or corrupting data stored on the drive. Once the Safe to Remove Hardware message appears, please disconnect the enclosure from the computer by removing the USB connection.

## Mac OS X

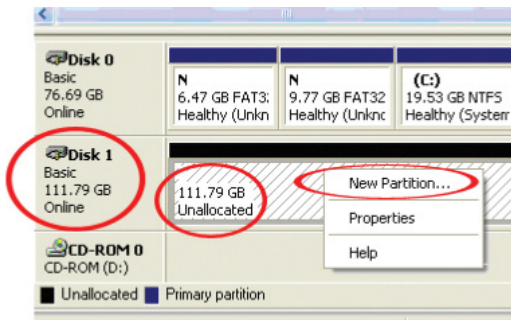
To safely disconnect the attached drive from the host computer, close any windows listing the contents of the removable drive. Once all windows are closed, click on the USB storage icon on the desktop, and drag it to the Trash Can icon on the desktop. Allow 5 seconds before physically removing the enclosure/drive from the computer.

# Initializing the Hard Drive

1. If the SATA Hard Drive is blank it may need to be initialized and formatted before use. From the main Windows desktop, right-click on “My Computer” (“Computer” in Vista / 7 / 8), then select Manage. In the new Computer Management window, select Disk Management from the left window panel.



2. A dialog window should automatically appear, asking you to initialize the drive. Depending on the version of Windows, it will give you the option of either creating an “MBR” or “GPT” disk. GPT (GUID partition) is not compatible with some older operating systems, while MBR is supported by newer and older operating systems.
3. Once initialized, locate the Disk that says it is “Unallocated” (check the listed hard drive capacity to confirm it’s the correct hard drive) and then right-click in the section that says “Unallocated” and select “New Partition”.



4. Follow the on screen prompts to initialize the drive in the format of your choice.

# Specifications

<b>Host Interface</b>	USB 3.0
<b>External Connectors</b>	1 x 15 pin SATA Power female 1 x 7 pin SATA Data male 1 x USB 3.0 type A male
<b>Maximum Data Transfer Rate</b>	USB 3.0: 5 Gbit/s
<b>Compatible Operating Systems</b>	Windows 2000/XP/Server 2003/Vista/ Server 2008 R2/7/8 (32/64-bit), Mac OS 9/10, Linux

# Technical Support

StarTech.com's lifetime technical support is an integral part of our commitment to provide industry-leading solutions. If you ever need help with your product, visit [www.startech.com/support](http://www.startech.com/support) and access our comprehensive selection of online tools, documentation, and downloads.

For the latest drivers/software, please visit [www.startech.com/downloads](http://www.startech.com/downloads)

## Warranty Information

This product is backed by a two year warranty.

In addition, StarTech.com warrants its products against defects in materials and workmanship for the periods noted, following the initial date of purchase. During this period, the products may be returned for repair, or replacement with equivalent products at our discretion. The warranty covers parts and labor costs only. StarTech.com does not warrant its products from defects or damages arising from misuse, abuse, alteration, or normal wear and tear.

### Limitation of Liability

In no event shall the liability of StarTech.com Ltd. and StarTech.com USA LLP (or their officers, directors, employees or agents) for any damages (whether direct or indirect, special, punitive, incidental, consequential, or otherwise), loss of profits, loss of business, or any pecuniary loss, arising out of or related to the use of the product exceed the actual price paid for the product. Some states do not allow the exclusion or limitation of incidental or consequential damages. If such laws apply, the limitations or exclusions contained in this statement may not apply to you.

Hard-to-find made easy. At StarTech.com, that isn't a slogan. It's a promise.

StarTech.com is your one-stop source for every connectivity part you need. From the latest technology to legacy products — and all the parts that bridge the old and new — we can help you find the parts that connect your solutions.

We make it easy to locate the parts, and we quickly deliver them wherever they need to go. Just talk to one of our tech advisors or visit our website. You'll be connected to the products you need in no time.

Visit [www.startech.com](http://www.startech.com) for complete information on all StarTech.com products and to access exclusive resources and time-saving tools.

*StarTech.com is an ISO 9001 Registered manufacturer of connectivity and technology parts. StarTech.com was founded in 1985 and has operations in the United States, Canada, the United Kingdom and Taiwan servicing a worldwide market.*