

1080P Baby Monitor Quick Start Guide



Please refer the User Manual for a full explanation of features and instructions of this product.

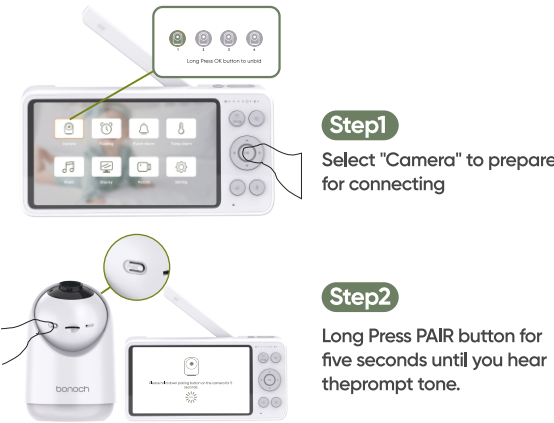
www.bonoch.com/contact support@bonoch.com

1. Setting Up

1.1 Connect the power adapter with camera. Plug the power adapter into power socket (refer to the illustration). Turn the on/off button on the camera to the ON position.

1.2 Press (Power) for 2 seconds to turn on the parent unit.

1.3 The factory default camera and the parent unit are paired. If no pairing occurs, or you need to add a new camera, please follow the steps below to add.



2. Commonly FQA

2.1 About VOX mode

Unlike the traditional VOX Mode, we prefer to call this feature Energy-saving Mode.

To save energy, the display screen is set to auto-sleep by default. You can adjust the auto-sleep time in the "Display" settings, adjust the alarm sensitivity (Crying Detect, Motion Detect) and "Alarm Volume" level in the "Event Alarm" settings. It will light up & alert you when any movement is detected.



2.2 About Screen Flicker

If your screen flickers in very bright environments

- 1 Please avoid direct strong light shining on the camera.
- 2 Adjust the anti-flicker setting to 50Hz or 60Hz by going to "menu - Display Setting - Anti-flicker".
- 3 If the issue persists, please contact us for assistance.

2.3 About Split-screen Mode

- When connecting ≥ 2 cameras, it will automatically enter the dual-split-screen mode.
- When connecting ≥ 3 cameras, it will automatically enter quad-split-screen mode.
- In these modes, you can use the arrow keys to select the corresponding display screen you want, and then press the OK button to enter single-screen mode.
- In single-screen mode, press OK again to return to split-screen mode.
- When a specific camera is not needed, you need to unpair it, otherwise there will still be presented in multi-split-screen form.

NOTE:

If you are not sure how to unpair or have other questions, please consult customer support or visit the official website for instructional videos.

2.4 No signal on the Parent Unit

- The power adapters may not be properly connected.
- Confirm the toggle switch of the Baby Unit is in "Power On" position
- Confirm the Parent Unit has power and is powered on
- Ensure the Baby Unit and Parent Unit are not far from each other.
- The baby Unit and Parent Unit may not be properly paired. Follow the PAIRING instructions.

2.5 Interference or poor connection

- Opening the folded antenna upright improves signal reception.
- Move the Baby Unit closer to the Parent Unit.
- The Baby or Parent Units may be too close to metal objects.
- Other electronic devices may be interfering with the signal.
- Maybe on a low battery.

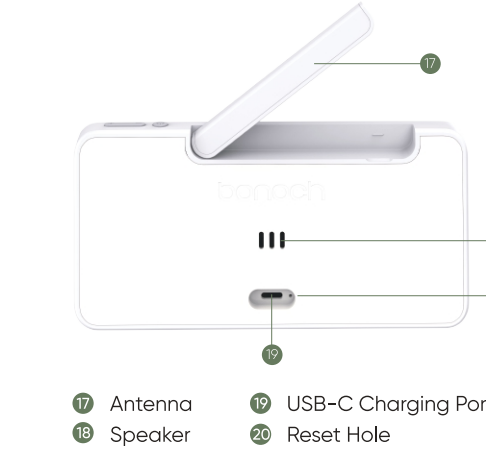
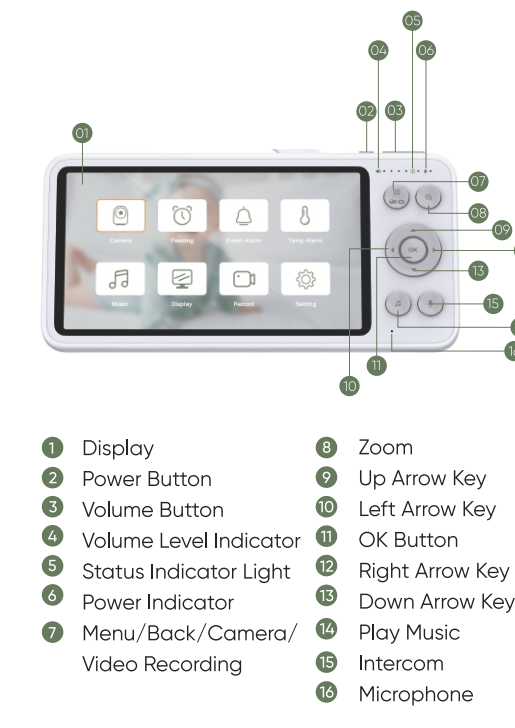
* Other issues not mentioned can consult the manual or consult customer service.

3. Product Overview

3.1 Baby Unit



3.1 BParent Unit



3.3 Keyboard & Indicator Light Instructions

Button or Indicator Light	Description
Power Button	Long press to turn the device on/off Short press to wake up the device / put it on standby
Volume Up/Down Buttons	Control the volume level on the parent unit

Power Button	Short press to open menu option or go back Double press to start quick photo capture Long press to enter quick video recording * Note: Photo and video functions require an inserted storage card on the camera
Zoom Button	Control the screen display to zoom in or out
Direction Buttons	Control the direction of the camera Short press to confirm * Note: Rotation function requires connection with 2 or more cameras
Music Button	Short press to play soothing music Short press again to stop the music
Talk Button	Press and hold to talk to your baby
Volume Indicator Light	Reflects the sound level from the Camera Unit Green: Low volume, no disturbance to the child's rest Orange: Moderate volume, attention required Red: High volume, may disturb the child's rest

Status Indicator Light	Reflects the current working status Steady green light: Normal operation Blinking green light: No camera connection or camera disconnection
Charging Indicator Light	Blue light: Charging status

3.4 Menu Options Overview

Menu Icon	Description	Options
	Camera Options	Add, Delete *Long Press OK button to unbind *Connect up to 4 cameras
	Feeding Alarm Options	Alarm countdown setting Alarm time setting (off/2hrs/3hrs/4hrs/5hrs)
	Event Alarm Options	Crying detect switch and sensitivity adjustment (High/Low/Off) Motion detect switch and sensitivity adjustment (Low/Medium/High/Off) Adjustment of alarm volume *Not controlled by volume up and down keys in daily use

	Temp Alarm Options	Set temperature limits Set temperature unit Temp alarm switch
	Music Options	Select lullaby Switch loop playback mode Adjust music volume
	Display Options	Anti-flicker adjustment (Off/50Hz/60Hz) Sleep mode switch and time adjustment (1min/3min/5min/Off) Adjust display brightness
	Record Options	View recordings and photos
	Record Options	Set language Set date and time Child unit info view, reset, and restart operations Parent unit info, upgrade, and reset operations

3.4 Status Indication Overview

Status Icon Shown	Description
	Camera number of the currently displayed screen
	Prompt for entering scan mode
	In night vision mode
	Lullaby playing number
	Motion detect function enabled, RED icon indicates alarm triggered
	Crying detect function enabled, RED icon indicates alarm triggered
	Feeding alarm function enabled, RED icon indicates alarm triggered
	Signal strength
	Current battery level
	Indicates Parent Unit sound is enabled
	Indicates Parent Unit sound is disabled

4. Quick Operation

4.1 Quick Actions to Record

Quick Actions To Record

Double-tap the menu button, camera icon shows with sound, photo taken.
Hold the menu button, video icon shows with sound, start manual recording.
Then hold the menu button again to stop manual recording.

4.2 Switching Camera

Switch cameras manually



When two or more cameras are connected, press the "OK" button to enter the split screen mode. You can now use the arrow keys to select a screen you want to zoom in, and press the "OK" button again to switch to the new camera screen.

Turn on multiple cameras scan mode



When two or more cameras are connected and the screen displays a single camera, press the "OK" button for 3 seconds. "Scan mode on" will then be displayed at the bottom left of the screen, and the loop logo of the camera will appear at the top of the screen. The baby monitor will automatically loop real-time video from up to 4 cameras in single-screen mode every 15 seconds.

Turn off multiple cameras scan mode



To turn off multiple cameras scan mode, press the "OK" button for 3 seconds, the loop logo of the camera at the top of the screen will disappear.

NOTE:
For additional quick action and video guides, please visit the website



4.3 TF card installation

01. Insert the TF card according to the direction as shown.
02. It is recommended to use a Class 10 or higher speed and a capacity of 32GB or above for the TF card.
03. For detailed instructions and operation videos, please visit the official website or contact customer support for assistance.

5. Replacing the Camera Len



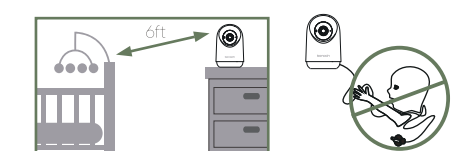
Rotate to remove the decorative ring of the original lens (please keep the removed decorative ring properly, it needs to be reinstalled later when using the standard lens)

Take out the additional wide-angle lens, align it and screw it in, pay attention to make sure it is installed in place



6. WARNING

6.1 STRANGULATION HAZARD



6.2 Noise or Signal Interference

Avoid placing the two cameras too close together. Please keep a distance of at least 3 feet or more to prevent noise or signal interference.

To ensure safety, please use the adapter and charging cable included in our package to charge the bonoch Baby Monitor. Please don't use the charging devices we provide to charge other electronic devices, such as cell phones, laptops, etc.