

Product Specifications

12-in-1 USB C Hub

1. Products Introduction :

This product is a smart extended screen electronic product, compatible with some intelligent devices using USB 3.1 Type-C interface like Apple Phones, iPad and Android. Support put the pictures, videos, films, sounds inside your computer or iPad on the display devices like TV and projector.

TYPE C PD interface is connected to a PD charger that charges computers, iPad and mobile phones.

2-way HDMI interface supports 4@30HZ UHD display

VGA interface supports 1080@60HZ full HD display. Support HDMI and VGA synchronous HD display.

RJ45 interface is connected to the wired network that can provide network services to computer, iPad and mobile phones. Speed up to gigabit.

2-way USB 3.0 TYPE A interface is connected to USB 3.0 U disk, it can high-speed read and write USB 3.0 U disk data, compatible with USB2.0, USB1.0, mouse and connect to USB devices like USB3.0, USB2.0 or USB1.1 keyboards.

USB3.0 TYPE C interface is connected to USB3.0 TYPE C U disk, it can high-speed read USB TYPE C 3.0 U disk data, compatible with USB2.0, USB1.1, mouse and connect to USB TYPE C devices like USB3.0, USB2.0 and USB1.1 keyboards.

2-way USB2.0 interface is connected to USB2.0 U disk. It can high-speed read USB2.0 U disk data, compatible with USB1.1 and connect to USB devices like USB2.0 or USB1.1 mouse or keyboards.

SD card holder and TF card holder, provide card reader function, can insert SD card and TF card.(SD card can not use with TF card at the same time, first read the card inserted), read the data inside the card.

2. Type Specification :

UCN3293-1

USB3.1 Type-CM to USB3.0x2+USB2.0x2+ RJ45 LAN +HDMIx2+VGA + SD/TF Card reader +USB2.0 TYPE C +PD

3. External dimensions:

length*width*height 127*62.3*16.5mm(body)

Length of wire (TBA)



4. Product weight :

Product body weight : 123±3g

5. Product Parameters

Essential parameter :

Product name	TYPE-C multifunctional Wu
Model	UCN3293-1
Color	Space ash
Size	Length*width*height 127*62.3*16.5mm(body)
Material	Aluminium alloy
VGA output	resolution : Maximum 1920*1080P@60HZ , downward compatibility (note1)
HDMI input	resolution : Maximum 3840*2160@30HZ , downward compatibility (note1)
USB 3.0 transmission speed	5Gbps , downward compatibility USB2.0、 USB1.1
USB 2.0 transmission speed	480Mbps , downward compatibility USB1.1
Network speed	10/100/1000M
PD charging	Interiorinput power (Max) : 100W@20V/5A
Quiescent current	<450mA

6. OPERATION NOTICE

- 1) Connect the connecting line of USB3.1 TYPE-C to the USB3.1 TYPE-C port of your PC. (note2)
- 2) Connect the HDMI interface to projector, TV, display device, etc.
- 3) Connect the VG interface to projector, TV, display device, etc.
- 4) Connect the USB3.0 port to USB device.
- 5) Connect the PD interface to PD charging.
- 6) Connect Ethernet port to wired network.
- 7) Automatic or manual setting IP computer address.

note1:

Display on same screen and split screen

When an external device connects VGA and HDMI

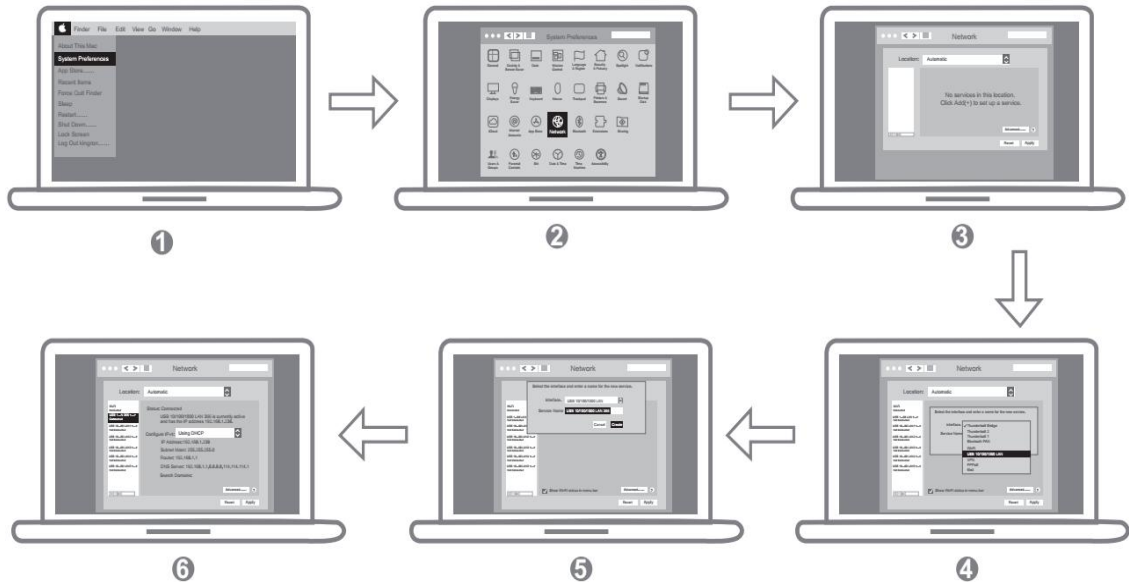
1. Support same screen, computer and external displays same :		
Windows System Computer Same Screen Mode :		
computer+VGA	Resolution ratio : (1080P)	Screen : (A+A)
computer+ HDMI 1	Resolution ratio : (4k@30Hz)	Screen : (A+A)
computer+ HDMI 2	Resolution ratio : (4k@30Hz)	Screen : (A+A)
computer+VGA+HDMI 1	Resolution ratio : (1080P)	Screen : (A+A+A)
computer+VGA+HDMI 2	Resolution ratio : (1080P)	Screen : (A+A+A)
computer+ HDMI 1+HDMI 2	Resolution ratio : (1080P)	Screen : (A+A+A)
computer+ VGA+HDMI 1+HDMI 2	Resolution ratio : (1080P)	Screen : (A+A+A)
MAC System Computer Same Screen Mode :		

computer+ HDMI 1+HDMI 2	Resolution ratio : (4k@30Hz)	Screen : (A+A+A)
Others like windows system computer same screen mode:		
2. Support split screen , computer and external displays differ :		
The split screen mode of windows system, the display on the computer side needs to be set to extended or mixed mode :		
computer+VGA+HDMI 1	Resolution ratio : (1080P)	Screen : (A+B+C)
computer+VGA+HDMI 2	Resolution ratio : (1080P)	Screen : (A+B+C)
computer+ HDMI 1+HDMI 2	Resolution ratio : (1080P)	Screen : (A+B+C)
computer+ VGA+HDMI 1+HDMI 2	Resolution ratio : (1080P)	Screen : (A+B+C)
The split screen mode of MAC system , computer needs to be set to turn off mirror mode :		
computer+VGA+HDMI 1	Resolution ratio : (1080P)	Screen : (A+B&B)
computer+VGA+HDMI 2	Resolution ratio : (1080P)	Screen : (A+B+B)
computer+ HDMI 1+HDMI 2	Resolution ratio : (4K@30Hz)	Screen : (A+B+B)
computer+ VGA+HDMI 1+HDMI 2	Resolution ratio : (1080P)	Screen : (A+B&B+B)

note2: connect other compatible USB3.1 Type-C intelligent devices, operations ibid.

Attention:

- 1) Because the gauge current of USB3.0 is 1.5A,for example,the current output of new Macbook is about 1.5A,if the load exceeds 1A, the computer will start self-protection function, it will prompt: USB power consumption, disable, unplug the converter(turn off the disable icon or reboot)insert again. First insert PD power supply(connect the power consumption equipment such as hard disk, when the connection can not be used normally, please connect the charger to the Type-C mother seat of the product, make it supply power to computer or hard disk.
- 2) When insert or unplug the PD adapter,the connected USB device will be quickly disconnected and then recover in a few seconds to prevent data loss or damage, please avoid disconnecting the connection between PD adapter and AC power when transmitting data.
- 3) RJ45 plug and play in Windows System Computer.
- 4) RJ45 set the steps for Macbook series as follows: System Preferences→network→click“+”create new services→choose USB 10/100/1000local area network→create→application program (click application program indicates USB 10/100/1000 LAN turn to green, connected successfully) , access to Macbook at this time via wired network.



5) Only load one USB mobile hard disk with high current without PD charger insertion.

Different devices, load currents vary greatly, reference current for relevant equipment as follows:

USB mobile hard disk : 550mA-1.5A ;

U disk : 200mA-350mA ;

Mouse : 100mA , game mouse up to 350mA ;

SD card : 150mA-300mA ;

Internet access : 100mA ;

HDMI : 350mA

The computer load protection current is 1.5A, the computer load protection will cause the external equipment to work interrupted or abnormal operation, in order to ensure that more than 1.5A current load can work properly, need to insert PD changer first.

After inserting PD, specification of USB 3.0 output current is 900mA , specification of USB2.0output current is 500mA,

USB total current cannot exceed 3.0A of equipment current.

6) Design of this product according to real-time USB3.1 standard specification, it's normal when it may not be compatible with the product after the production of standard specification or social equipment, if there is such a situation, please contact customer service in time.

Partial Compatibility List :

兼容电脑及型号		兼容手机
苹果	Macbook 12英寸、Macbook Pro、Macbook Air 2018	华为 Mate10 Mate10pro Mate20 Mate20 X Mate20 Pro P20/P20 Pro P30 荣耀Note10
华为	MateBook、MateBookX、MateBookXPro、MateBook E	
小米	Air12.5/13.3英寸、Pro15.6英寸、小米游戏本	
华硕	灵耀3、灵耀3PRO、灵耀X系列、U306/U321系列、U4100ROG、U5100UQ 系列	
戴尔	XPS13、XPS15、G3/G5/G7系列、灵越5000/7000	
联想	Yoga5 Pro、联想小新Air 12英寸、Mlix 720、联想T480	三星 S8/S8+ S9/S9+ S10/S10+ Note8 Note9
	Thinpad-X1、Thinpad-X390、Yogo720/730、C930	
雷蛇	Blade stealth灵刃、灵刃潜行版	
惠普	Pavilion x2、EliteBook Folio G1	
微软	Surface Book2、Surface Go	
谷歌	ChromeBook Pixels、PixelBook Pen	
TYPE-C机型持续更新中...		
兼容系统		
支持Windows全系列、Linux、Vista		
以上手机需要使用PD协议电源，手机充电电源在100mA以内		

7. Illustration of Product Port Use

