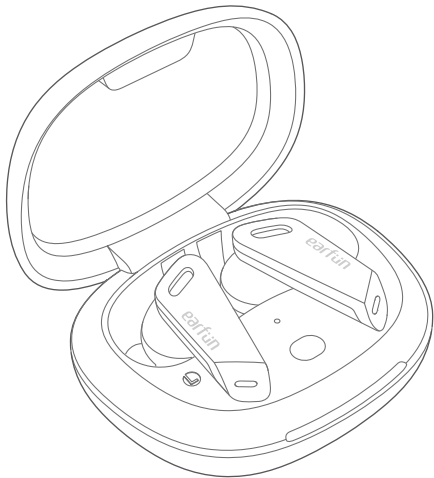


earfun

# EarFun Air Pro

ANC Wireless Earbuds



BC

User Manual

## 1 What's in the Box

EarFun Air Pro



Charging Case



Ear Tips (S, M, L)



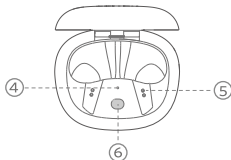
USB-C Cable



User Manual



## 2 Product Diagram



- ① Tap control zone      ② Microphone      ③ Charging contactor      ④ Pairing indicator
- ⑤ Charging dock      ⑥ Charging case button      ⑦ USB-C charging port      ⑧ Charging case
- ⑨ Charging case indicator

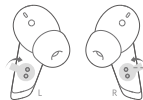
### 3 Charging

1. Open or close the charging case to activate the LED battery indicator.
2. Remove the film on the earbuds when taking them out of the charging case for the first time.
3. Fully charge both the earbuds and the charging case before the first-time use.
4. The charging case must be closed that earbuds can start charging.
5. Fully dry off the earbuds and the USB-C port before charging.



Open or close

- ✳ Red Light flash 3 times > 60%
- ✳ Red Light flash 2 times > 30%
- ✳ Red Light flash 1 time > 5%
- ✳ Red Light flash 1 time quickly < 5% Please charge



Remove the film for the first-time use

- ❶ Note: For the first-time use, please charge the earbuds for 30 seconds to activate it.

Connect USB-C cable for charging



- ✳ Red Light on -Charging
- ⊙ Red Light off -Charging complete

first-time use

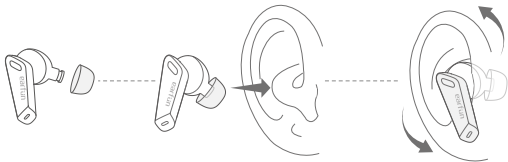


## 4 Specifications

Bluetooth version	V5.0
Bluetooth frequency	2.402GHz-2.48GHz
Bluetooth profile	A2DP, AVRCP, HFP, HSP
Maximum working range	15m(without obstacle)
Battery capacity	60mAh x 2(earbuds); 500mAh(charging case)
Charging time	1.5 hours(for earbuds); 2 hours(for charging case via USB-C)
Playtime	Other Mode—Up to 9 hours, Totally 32 hours with the charging case; (varies by volume level and audio content) ANC Mode--Up to 7 hours, Totally 25 hours with the charging case; (varies by volume level and audio content)
Input	5V==1A
Dimensions	67mm x 55mm x 31mm
Weight	53g

## 5 How to Fit

**Note:** If the earbuds are not worn correctly, it may affect the noise cancelling effect.



1. Choose the ear tips that fit your ears best.
2. Identify the left and right earbuds.
3. Insert the earbuds into the canal of your ears.
4. Turn and find the most comfortable position.

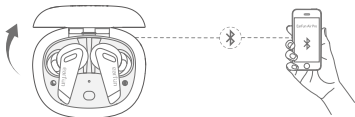
## 6 Pairing Your Earbuds

### First time pairing with device

Step 1: Open the charging case, the earbuds will automatically power on and enter into pairing mode.

Step 2: Activate Bluetooth on your Bluetooth-enabled device and search for other Bluetooth devices.

Step 3: Select "EarFun Air Pro" from the list of Bluetooth devices shown (if a password is needed, type '0000').



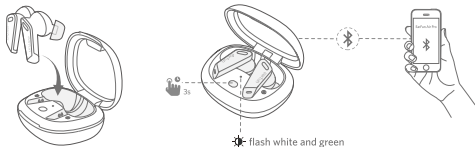
### Notes:

- The earbuds will automatically connect with the device they were last paired with when the case is opened.
- Each earbud could be used independently.

### Connect to a New Device

Step 1. Place both earbuds back into the charging case and keep the cover open, then press and hold the charging case button for 3 seconds until the pairing indicator on charging case flash white and green alternately and rapidly.

Step 2. Search on the new device and connect.



## 7 Functions

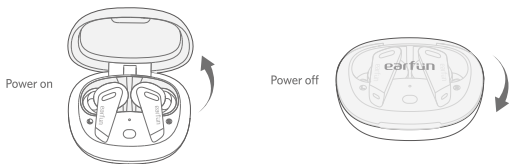
Note: EarFun Air Pro has a built-in accelerometer sensor for tap to control the earbuds. A light touch will not be able to control them.



## Power on/off

Open the charging case, the earbuds will automatically power on.

Place the earbuds back into the charging case. Close the case and the earbuds will automatically power off.



## Playing music



Play/Pause



Next track



## Hands free conversation



Answer/End a call



Reject a call



Activate the voice assistant

Voice assistant



Noise cancelling control

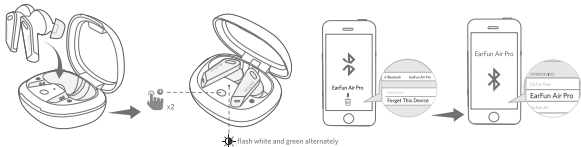
Noise Reduction  
Ambient sound  
Normal



## 8 Reset and Reconnecting

If you fail to build connection between two earbuds, or between earbuds and Bluetooth device, please try the following steps:

1. Place both earbuds into the charging case.
2. Keep the charging case open and double press the charging case button, the pairing indicator will flash white rapidly, just waiting for the flash white transfer to flash white and green alternately, then earbuds have been reset successfully.
3. Delete the old connection from the Bluetooth device and reconnect "EarFun Air Pro".



## Troubleshooting

Q: Can I use both earbuds separately?

A: Yes, each earbud could be used independently.

Q: The earbuds are turned on, but it doesn't connect to my device?

A: To connect the earbuds to your device, please check if the Bluetooth of the device is on first, then select "EarFun Air Pro" on the Bluetooth list to get paired. If the earbuds still can't connect to your device, please try to reset it, or contact our customer support.

Q: Why the connection is not stable and cuts out intermittently?

A: Please make sure there are no objects between the earbuds and your Bluetooth device, and make sure there is no radio or WIFI interference nearby.

Q: What is the range of Bluetooth earbuds?

A: Bluetooth earbuds have maximum range of 49 feet (15m, no obstacle). However, the actual range will depend on usage and environment.

Q: Is there volume control on the earbuds?

A: No, please control the volume with the Bluetooth device.

Q: My earbuds will not switch on.

A: Please recharge it and make sure it has enough battery power. If it is fully charged and still nothing happens or if you are not able to charge the unit, please contact our customer support for warranty cover.

Q: Is the charging case waterproof?

A: No, the earbuds are IPX5 sweat & waterproof, but the charging case is not waterproof.

Q: Will the earbuds shut off automatically?

A: The earbuds will remain on as long as they are connected to a device. If no audio is in use, they will enter power-saving mode and wake up once audio is played. If the earbuds are not connected with any devices, they will automatically shut off in 60 minutes.