



**NewWorld®**  
**Pet Products**  
by *MidWest* Homes for Pets®

Assembly Instructions for Model Numbers B550-18, B550-24, B552-30, B554-36, B556-42, B558-48

## IMPORTANT INFORMATION

Remove collar, tags, and leads from pet before placing it in the exercise pen to prevent possible entanglement.

Unwrap and remove all parts from the box. Keep the box and packing material until the product is assembled. In case of return or exchange, failure to return product in similar condition as received could result in limited reimbursement. Please save sales receipt as proof of purchase. **TOLL-FREE SERVICE HELPLINE:** If you have any problems or questions with the assembly of your new Exercise Pen call our Service Helpline at: 1-800-428-8560 between 9:00 a.m. and 4:00 p.m. (EST) Monday through Friday.

## PARTS IDENTIFICATION

(1) Exercise Pen (8 connected panels)

(4) Ground Anchors

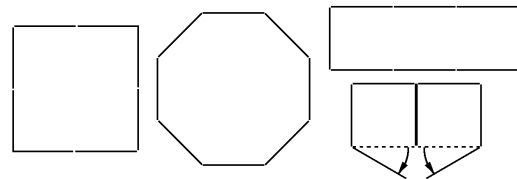


(4) Snaps

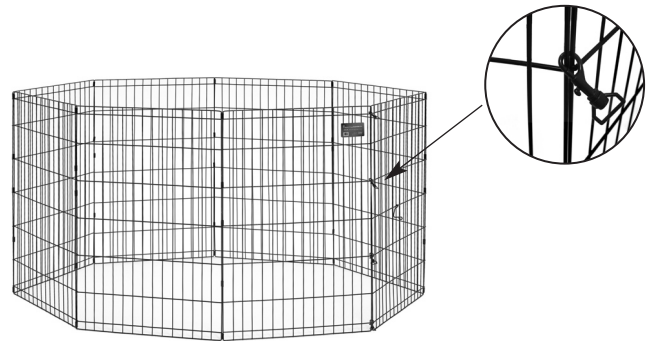


## ASSEMBLY INSTRUCTIONS

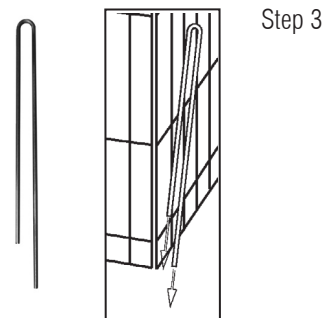
**1.** The exercise pen can be set up in many different configurations. Decide what configuration you'd like to use and set up the pen. (Note: The pen can be moved and reconfigured after it has been assembled.)



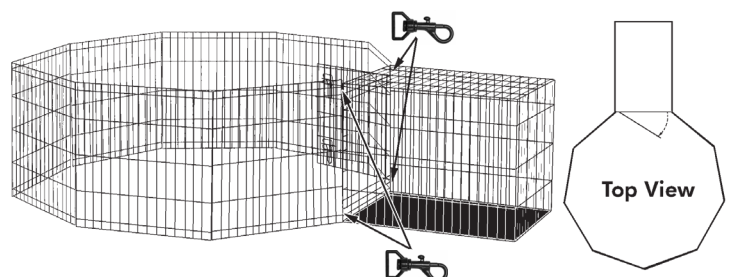
**2.** Connect the two ends with the snaps as shown in picture. For best results, place snaps at the top and bottom between the two closely spaced wires, and space the remaining two snaps evenly along the middle wires.



**3.** For added safety when used outdoors, install a ground anchor at the intersection of panels, spacing them evenly around the perimeter. (Note: Snaps and other details have been eliminated to more clearly illustrate the ground anchor.)



**4.** NOTE: This exercise pen can be connected to a standard New World crate. Be sure the crate is assembled according to the printed instructions. Connect the two ends of the pen to the crate as shown using the four included snaps.



## LIMITED MANUFACTURER'S WARRANTY

1. For one (1) year from the date of original purchase, New World warrants to the purchaser of this product that, should it prove defective by reason of improper workmanship and/or material, New World will repair or replace, at its option, any defective part of the product, without charge for the part or for shipping. Replacement parts are warranted for the remainder of the original period.
2. **THIS WARRANTY DOES NOT COVER** defects in the product caused by any animal, any physical abuse to or misuse of the product, any damage caused by the original purchaser or any third party, or any defects arising or discovered more than one (1) year from the original retail purchase date.
3. **STEPS TO OBTAIN WARRANTY SERVICE:**
  - A. The purchaser must call New World's HELPLINE, 800-428-8560, to report the alleged defect to a customer service representative or obtain missing parts.
  - B. The customer service representative will determine if the defect is covered by this warranty, and if it is, will authorize and instruct the purchaser in how to obtain corrective action.
  - C. New World may require the purchaser to present the sales receipt or other proof of purchase prior to authorizing any return or replacement. No returns or replacements will be permitted without proper authorization. If a return or replacement is authorized, you may be requested to return the item to New World or to make the item available for pick-up by New World.
4. **ANY EXPRESS WARRANTY NOT PROVIDED IN THIS WARRANTY DOCUMENT, AND ANY REMEDY FOR BREACH OF CONTRACT THAT, BUT FOR THIS PROVISION, MIGHT ARISE BY IMPLICATION OR OPERATION OF LAW, IS HEREBY EXCLUDED AND DISCLAIMED. THE IMPLIED WARRANTIES OF MERCHANTABILITY AND OF FITNESS FOR ANY PARTICULAR PURPOSE ARE EXPRESSLY LIMITED TO A TERM OF ONE (1) YEAR. SOME STATES DO NOT ALLOW LIMITATIONS ON HOW LONG AN IMPLIED WARRANTY LASTS, SO THE ABOVE LIMITATIONS MAY NOT APPLY TO YOU.**
5. **UNDER NO CIRCUMSTANCES SHALL MIDWEST BE LIABLE TO PURCHASER OR ANY OTHER PERSON OR ANY SPECIAL, INCIDENTAL OR CONSEQUENTIAL DAMAGES, WHETHER ARISING OUT OF BREACH OF WARRANTY, BREACH OF CONTRACT OR OTHERWISE, SOME STATES DO NOT ALLOW THE EXCLUSION OR LIMITATIONS OF INCIDENTAL OR CONSEQUENTIAL DAMAGES, SO THE ABOVE LIMITATIONS OR EXCLUSION MAY NOT APPLY TO YOU.**
6. This warranty gives you specific legal rights, and you may also have other rights which vary from state to state.

800-428-8560  
midwesthomes4pets.com  
3142 S. Cowan Rd.  
Muncie, Indiana 47302



**NewWorld®**  
**Pet Products**  
by *MidWest* Homes for Pets®