

# REVITAGLOW PRO

LIGHT THERAPY MASK

USER MANUAL



Dermatologists, aestheticians, and spas use light therapy for anti-aging and to smooth, soothe, and rejuvenate skin. Phototherapy is also used to treat acne, rosacea, eczema, psoriasis and other skin conditions.

Light therapy is perfect for all skin types, even sensitive or irritated skin. Everyone can experience the benefits of light therapy from the comfort of their own home.

## HELLO THERE.

Joel and I are athletes who suffered from severe ACL injuries a few months apart. We purchased multiple pieces of wellness equipment for our in-home rehab but were left disappointed and frustrated by wellness and recovery devices that made big promises but gave no support, no well-thought-out plan to follow, and no results. And that's how Lifepro came about, and why the Wellness Recovery collection was created — we've set out to change all of that. It's why every piece of equipment bearing our name not only undergoes rigorous scrutiny to make sure it delivers on power and efficacy, but also comes with built-in support from our 'guiding angels' and a built-in lifetime warranty so that you're never left hanging.

Welcome to Lifepro.  
We're in this together now.

*Abe & Joel*



You don't need expensive trips to the spa to get smoother, softer, more supple skin. The Lifepro RevitaGlow Pro Light Therapy Mask provides professional-level LED light therapy treatments from the comfort of your own home. Light therapy, also called phototherapy, is a highly-effective, non-invasive, chemical-free way to safely and painlessly repair and rejuvenate your skin. The RevitaGlow Pro consists of both a face mask and a separate mask for the neck and upper-chest area. The two masks may be used together or separately, depending on the desired treatment. RevitaGlow Pro provides four light therapy treatment options in one simple, hands-free solution:

- **Red (630 nm) light** improves blood circulation and boosts collagen and elastin production, reducing the appearance of fine lines, wrinkles, and scars. It tightens pores, smooths skin tone, and reduces symptoms of eczema, psoriasis, and rosacea including redness, itching, flaking, swelling, and broken capillaries.
- **Blue (415 nm) light** has anti-bacterial benefits and reduces inflammation. It eliminates the bacteria that cause acne, regulates over-active oil/sebum glands, and reduces pigmentation, sun damage, and skin scaling from psoriasis.
- **Near-infrared (830 nm) light** targets deep fibroblast cells, stimulating collagen and elastin production, resulting in plumper, firmer, more youthful-looking skin.
- **Pink (630 nm + 415 nm) light** provides the combined benefits of red and blue light.

Use the RevitaGlow Pro Light Therapy Mask three to four times a week for 15–20 minutes, and see results in as little as three weeks. The RevitaGlow Pro is lightweight and portable. Take your beauty regimen to the next level and enjoy smoother, softer skin anytime, anywhere!

## Redefine wellness and beauty as you experience the transformative power of the Lifepro RevitaGlow Pro:

- **Treat acne:** kills acne-causing bacteria, regulates oil glands, reduces acne scarring.
- **Reduce lines and wrinkles:** boosts blood flow and increases collagen and elastin production.
- **Detoxification:** improves lymphatic drainage and flushes toxins.
- **Improve symptoms of eczema, psoriasis, and rosacea:** reduces itching, flaking, redness, swelling, and inflammation.

Check out the information in this manual for ways to get started using the RevitaGlow Pro. Be sure to visit our website [revitaglowpro.lifeprofitness.com](http://revitaglowpro.lifeprofitness.com) for access to our **FREE library of videos** which demonstrate how to easily incorporate the RevitaGlow Pro into your health and wellness routine.

## GET STARTED

### WHAT'S IN THE BOX

- Lifepro RevitaGlow Pro Light Therapy Face Mask
- Lifepro RevitaGlow Pro Light Therapy Neck and Chest Mask
- Remote Control
- Micro-USB Charging Cable
- Velcro Straps (3 Pairs)
- Replacement Silicone Eye Protectors (1 Pair)
- User Manual

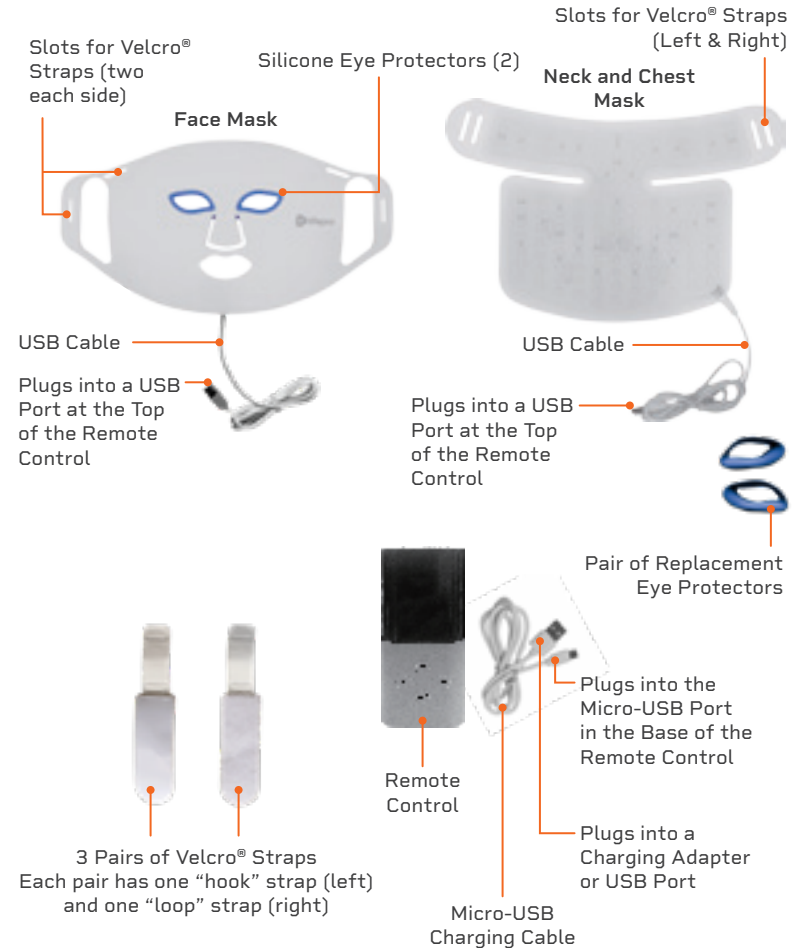
### FIRST STEPS

1. Remove the RevitaGlow Pro and accessories from the shipping box and inspect each item for shipping damage.
2. Carefully read all safety warnings and operating instructions before using the RevitaGlow Pro.
3. Go to [revitaglowpro.lifeprofitness.com](http://revitaglowpro.lifeprofitness.com) and register your product within 14 days of purchase to activate your lifetime warranty.
4. Complete the steps in the **EASY-START SETUP GUIDE** on page 9 to begin using the RevitaGlow Pro.

### CUSTOMER SUPPORT

If you have any questions about setting up the RevitaGlow Pro, we're here to help. Call or email us and an experienced customer support representative will be happy to assist you: (800) 563-6604 or [support@lifeprofitness.com](mailto:support@lifeprofitness.com).

## PARTS OF THE REVITAGLOW PRO



## TESTING FOR SKIN SENSITIVITY

Before your first treatment, it is important to perform a skin sensitivity test to ensure you won't experience any adverse reactions to light therapy.

To do a sensitivity test:

1. Plug the face mask into the remote control and place the mask on your inner arm, with the LEDs against your skin.
2. Press and hold the On/Off button for three seconds to turn on the RevitaGlow Pro. Press on On/Off button a second time to begin the session. Allow the entire default 10-minute treatment program to run.
3. If your skin feels uncomfortable or hot at any point during the test treatment, stop using the RevitaGlow Pro immediately.
4. Wait at least 6 hours after the sensitivity test. If your skin becomes red and/or itchy, you may be sensitive to light therapy and you should not continue to use the RevitaGlow Pro.

**NOTE:** Please see a list of contraindications (people who should not use this device) on page 20.

### FCC STATEMENT

This device complies with part 15 of the FCC Rules. Operation is subject to the following two conditions: (1) this device may not cause harmful interference, and (2) this device must accept any interference received, including interference that may cause undesired operation.

**NOTE:** Changes or modifications not expressly approved by the party responsible for compliance could void the user's authority to operate the equipment.

**NOTE:** This equipment has been tested and found to comply with the limits for a Class B digital device, pursuant to part 15 of the FCC Rules. These limits are designed to provide reasonable protection against harmful interference in a residential installation. This equipment generates, uses and can radiate radio frequency energy and, if not installed and used in accordance with the instructions, may cause harmful interference to radio communications. However, there is no guarantee that interference will not occur in a particular installation. If this equipment does cause harmful interference to radio or television reception, which can be determined by turning the equipment off and on, the user is encouraged to try to correct the interference by one or more of the following measures:

- Reorient or relocate the receiving antenna.
- Increase the separation between the equipment and receiver.
- Connect the equipment into an outlet on a circuit different from that to which the receiver is connected.
- Consult the dealer or an experienced radio/TV technician for help.



## EASY-START SETUP GUIDE

### PREPARING FOR YOUR TREATMENT SESSION

1

- Wash your face, neck, and upper chest.
- Carefully pat your skin dry with a soft towel.
- Apply a light, soothing moisturizer to your skin, if desired.

### SETTING UP THE MASKS

2

- Locate the three pairs of Velcro® straps.
- Attach two pairs of straps to the face mask and one pair of straps to the neck mask following the instructions on page 10.
- Plug the USB cable exiting the bottom of the face mask into one of the standard USB ports at the top of the remote control.
- Plug the USB cable exiting the bottom of the neck mask into the other standard USB port on the remote control.

### BEGINNING YOUR TREATMENT SESSION

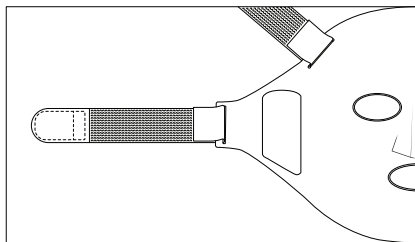
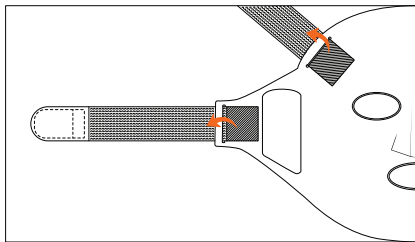
3

- Lie down on a flat comfortable surface, such as a bed or couch.
- Place the RevitaGlow Pro in position on your face, with the LED-side against your skin.
- Fasten the Velcro® straps to secure the mask to your face following the instructions on page 11.
- Lay the neck/chest mask on your upper chest and attach the Velcro® straps to secure it around your neck following the instructions on page 11.
- Press and hold the On/Off button on the remote control for three seconds to turn on the RevitaGlow Pro.
- Adjust the time, color mode, and intensity as desired. See **OPERATING INSTRUCTIONS** on the next pages for details.
- Press the On/Off button a second time to start the session.

## SECURING THE MASKS

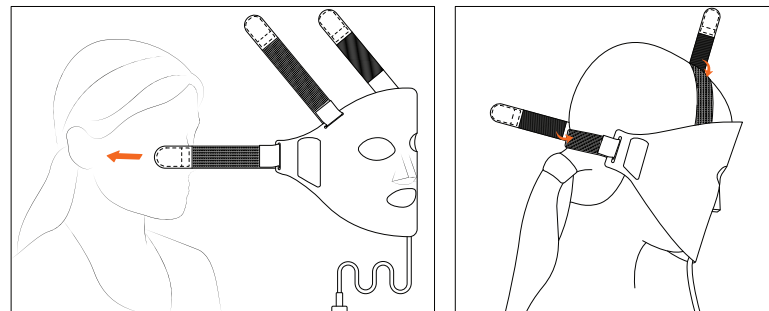
### ATTACHING THE VELCRO STRAPS TO THE FACE AND NECK MASKS

1. Locate the three pairs of Velcro® straps.
  - a. Each pair has one “hook” strap (with stiff plastic hooks) and one “loop” strap (with soft, fuzzy loops).
  - b. One pair of straps will attach to the mask behind your head and the other will attach to the mask across the top of your head.
2. Attach the first pair of straps to the face mask:
  - a. Insert the square end of one strap through a slot in the side of the face mask and fold the end over to secure the strap.
  - b. Insert the second strap through the other slot in the side of the face mask and secure it in the same manner.
  - c. Make sure the two straps can be attached (the hooks and loops should face each other).
3. Attach the second pair of straps to the face mask:
  - a. Insert the square end of one strap through one slot in the top edge of the face mask and fold the end over to secure the strap.
  - b. Insert the square end of the second strap through the second slot in the top edge and secure it in the same manner.
4. Attach the final pair of straps to the neck mask in the same manner.
  - a. The straps insert through the slots in the side of the mask.
  - b. Make sure the two straps can be attached (the hooks and loops should face each other).



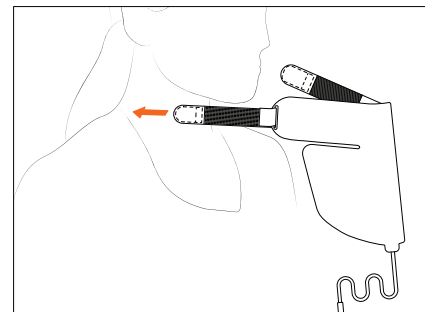
### SECURING THE FACE MASK TO YOUR HEAD

1. Place the mask on your face with the LEDs facing your skin.
2. Fasten the straps at the sides of the mask behind your head.
3. Fasten the straps on the top edge of the mask across the top of your head.
4. Make sure the mask is snug to your face, but not too tight. Readjust the straps if necessary.



### SECURING THE CHEST MASK TO YOUR NECK

1. Place the neck mask on your chest with the LEDs facing your skin.
2. Fasten the straps at the sides of the mask behind your neck. Make sure the mask is snug but not too tight.



# OPERATING INSTRUCTIONS

Please read the operating instructions before using the RevitaGlow Pro Light Therapy Mask. Keep this manual for reference.

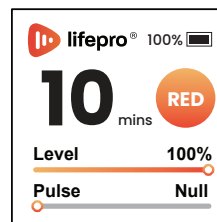
## CHARGING THE BATTERY

- Do not use the RevitaGlow Pro while it is charging. Always ensure it is powered off before charging.
- To charge:
  1. Ensure the RevitaGlow Pro is turned off.
  2. Plug the micro-USB charging cable into the micro-USB port on the bottom of the remote control.
  3. Plug the standard USB end of the charging cable into:
    - a. A USB port on a computer or laptop, OR
    - b. A 5V–1A USB charging adapter. Then, plug the charging adapter into a wall outlet.
- Your RevitaGlow Pro will typically take about 40 minutes to fully charge.
- The battery icon on the display screen shows the remaining battery.
- We recommend charging the device right away when less than 20% battery remains.
- The RevitaGlow Pro will automatically power off when the battery is depleted.
- The average run-time is about 2 hours per charge.

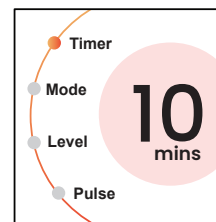
## USING THE REMOTE CONTROL

1. **Display Window:** Shows the battery level and selected working time, mode, brightness level, and pulse.
2. **Battery Status and Icon:** Shows the remaining battery charge.
3. **Settings Button:** Press to enter the settings menu and toggle through each of the settings options, timer, mode, level, and pulse (the frequency for pulsed-light therapy). An orange dot indicates the selection. Use the ◀ and ▶ buttons to adjust the selected option.
4. **On/Off Button:** Press the button once to turn on the remote control. The home screen will show the default treatment program. Press a second time to begin the session (either using the default settings or after adjusting the settings). Press a third time to turn off the remote control and the device.
5. **◀/▶ (Increase/Decrease) Buttons:** Press to adjust the selected setting. For time, set the number of minutes, from 1–30 minutes, in increments of 1 minute. For mode, toggle through the four modes, RED (630 nm + 830 nm), BLUE (415 nm), NIR (830 nm), and PINK (630 nm + 415 nm). For brightness level, set the brightness from 1–100% in increments of 1%. For pulse, set the frequency from 1–10 Hz in increments of 1 Hz. “Null” indicates a pulse of 0 Hz (pulsed-light therapy is off).

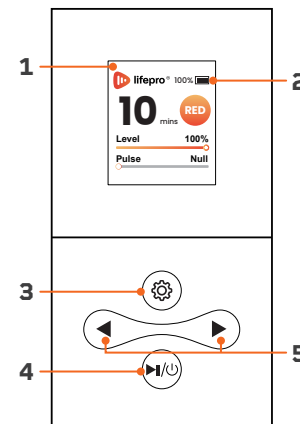
**NOTE:** On start-up, the home screen shows the default program: 10-minute working time, RED mode, 100% brightness level, and “Null” (0 Hz) pulse frequency.



Home Screen



Settings Menu



## USING THE REVITAGLOW PRO LIGHT THERAPY MASKS

1. Prepare to use the RevitaGlow Pro by following the instructions in steps 1–3 of the **EASY START SETUP GUIDE** on page 9.
2. Lie down on a flat comfortable surface, such as a bed or couch.
3. Place the face mask in position on your face, with the LEDs against your skin, and attach the Velcro® straps to secure it.
4. Adjust the face mask until the eye protectors fit comfortably around your eyes.
5. Lay the neck and chest mask on your upper chest and attach the Velcro® straps to secure it around your neck.
6. Press and hold the **On/Off button** on the remote control to turn on the RevitaGlow Pro. The default treatment program will appear on the home screen, RED (630 nm) mode, at 100% brightness level, for 10 minutes. Pulse is set to “Null” (off) by default.
7. Press the **Settings button** to toggle through the settings, time, mode, brightness level, and pulse frequency, if desired. An orange dot indicates the selection. Then press the ◀ or ▶ button to adjust your desired setting(s)
  - a. **Timer:** Press the ◀ or ▶ button to adjust the time from 1–30 minutes. The default time is 10 minutes. See **DETERMINING TREATMENT FREQUENCY AND DURATION** on the next page.
  - b. **Mode:** Press the ◀ or ▶ button to toggle between the four modes, RED (630 nm + 830 nm), BLUE (415 nm), NIR (830 nm), and PINK (630 nm + 415 nm). RED mode is selected by default. See **CHOOSING A COLOR THERAPY MODE** on the next page.
  - c. **Level:** Press the ◀ or ▶ button to adjust the brightness intensity level from 1–100% in increments of 1%. 100% is selected by default.
  - d. **Pulse:** Press the ◀ or ▶ button to adjust the pulse frequency from 1–10 Hz in increments of 1 Hz. “Null” (pulsed-light therapy off) is selected by default. :

8. Press and hold the **On/Off button** for three seconds to stop the session at any time. The RevitaGlow Pro will shut down automatically when the set treatment time completes. Press and hold the **On/Off button** again if you wish to begin another session.
9. Always power off the RevitaGlow Pro after each use.

## REPLACING THE EYE PROTECTORS IN THE FACE MASK

If you ever need to replace the silicone eye protectors:

1. Locate the replacement pair of eye protectors.
2. With the face mask LEDs facing towards you, pull each eye protector firmly to remove it.
3. Insert the replacement eye protectors into the eye slots. The raised, curved edges of the eye protectors will be on the inside of the mask.

## DETERMINING TREATMENT FREQUENCY AND DURATION

ISSUE/ SEVERITY	ACUTE	CHRONIC	MAINTENANCE
<b>Frequency</b> <i>(How Often)</i>	1–2 times daily	1–2 times daily	3–4 times weekly
<b>Duration</b> <i>(How Long)</i>	20–25 minutes	15–20 minutes	15–20 minutes

**NOTE:** Do not use for more than 30 minutes per day.

## CHOOSING A COLOR THERAPY MODE

The RevitaGlow Pro has four color therapy mode options:

MODE	WAVELENGTH	BENEFITS
RED	630 nm	Anti-aging benefits include boosting collagen and elastin production. Improves blood flow. Reduces the appearance of fine lines and wrinkles. Reduces symptoms of eczema, psoriasis, and rosacea including, redness, itching, flaking, and swelling.
BLUE	415 nm	Has anti-bacterial benefits and reduces inflammation. Treat mild to moderate acne by eliminating the bacteria that cause acne, regulating over-active oil/sebum glands, and reducing the appearance of acne scars. Reduces pigmentation and sun damage. Reduces skin scaling from psoriasis.
NEAR- INFRARED	830 nm	Targets deep fibroblast cells, stimulating collagen and elastin production, resulting in plumper, firmer, more youthful-looking skin.
PINK	630 nm + 415 nm	Provides the combined benefits of red and blue light.

### WHAT IS PULSED-LIGHT THERAPY?

Pulsed-light therapy is phototherapy that uses rapid pulses of light to produce improved results. Emerging research shows that the short pause between light pulses encourages cells to regenerate more efficiently, meaning pulsed light has a greater effect on cell regeneration and recovery.

Frequency is a measure of the pause between one “on” time and the next. For example, if a frequency of 10 Hz is selected, the LEDs will pulse on and off 10 times per second. By default, the RejuvaGrow uses continuous waves of light (the pulse is set to “Null” or off). When the pulse frequency is turned on, the device LEDs will turn on and off rapidly at the set frequency (Hz).

When the RevitaGlow Pro is powered on, press the **Settings button** to toggle to **Pulse** and use the ◀ or ▶ **button** to set the frequency from 1-10 Hz. The LED lights will emit rapid pulses of light.

## TIPS FOR USING THE REVITAGLOW PRO

- Thoroughly wash and dry your face, neck, and upper-chest before using.
- We strongly recommend discontinuing any Retin-A use at least 5 days before using the RevitaGlow Pro.
- Do not wear jewelry or accessories under the RevitaGlow Pro mask.
- Lie down on a flat comfortable surface, such as a bed or couch during treatment. We recommend spending the treatment time practicing blissful, uninterrupted relaxation and self-care, such as listening to music or meditating.
- Place the RevitaGlow Pro in position on your face before turning it on.
- Ensure the RevitaGlow Pro is properly positioned on your face so that eye protectors are positioned comfortably around your eyes to prevent light exposure to your eyes.
- Check the treatment area frequently and stop immediately at the first sign of pain or discomfort.
- We recommend 15–20-minute treatment sessions, 3–4 times a week.
- We do not recommend using for more than 30 minutes per day.
- People with sensitive skin or skin conditions that can be exacerbated by heat, such as eczema and rosacea, may want to use the device only for short durations.
- Optionally, you may apply a light, soothing moisturizer before using.

### ⚠ CAUTION

- Do not look directly into the LEDs, as this may result in damage to the eyes.
- Do not use this product in combination with ointments, salves, liniments, balms, or other topical pain-relievers that contain ingredients that produce heat (such as capsaicin), as this may result in burns.
- Do not use sheet masks or harsh products such as acids, acne treatments, or retinols under the RevitaGlow Pro.
- Do not wear metal jewelry, such as lip rings, nose rings, necklaces, or accessories in the treatment area, as metal may heat and cause burns.
- Do not use directly on swollen or inflamed skin or open wounds.
- Keep out of reach of children and pets.

## FREQUENTLY ASKED QUESTIONS

### Q: WHAT IS LIGHT THERAPY

A: Light therapy, also called phototherapy, is a highly-effective non-invasive, chemical-free therapy that can be used to safely and painlessly heal and rejuvenate many parts of the body.

Light therapy uses specific wavelengths, or colors of light to treat the skin, both at and below the surface. Different wavelengths of light have different treatment applications and benefits.

### Q: WHAT ARE THE BENEFITS OF LIGHT THERAPY

A: The benefits of light therapy vary greatly depending on the wavelength of light used. The benefits of light therapy include:

- **Red (630 nm) light** improves blood circulation and boosts collagen and elastin production, reducing the appearance of fine lines, wrinkles, and scars. It tightens pores, smooths skin tone, and reduces symptoms of eczema, psoriasis, and rosacea including redness, itching, flaking, swelling, and broken capillaries.
- **Blue (415 nm) light** has anti-bacterial benefits and reduces inflammation. It eliminates the bacteria that cause acne, regulates over-active oil/sebum glands, and reduces pigmentation, sun damage, and skin scaling from psoriasis.
- **Near-infrared (830 nm) light** targets deep fibroblast cells, stimulating collagen and elastin production, resulting in plumper, firmer, more youthful-looking skin.
- **Pink (630 nm + 415 nm) light** provides the combined benefits of red and blue light.

### Q: HOW MANY LEDS DOES THE REVITAGLOW PRO HAVE?

A: There are 234 total LEDs: 114 in the face mask and 120 in the neck mask.

### Q: WHAT IS THE BEST TREATMENT OPTION FOR ACNE?

A: Blue (415 nm) light is best for treating and preventing acne. It also works well to treat acne scarring.

### Q: WHAT IS THE BEST TREATMENT OPTION FOR ANTI-AGING?

A: Red (630 nm) light is great for anti-aging. In addition, it boosts blood flow and production of collagen and elastin. This results in a reduced appearance of fine lines and wrinkles, smoothed skin tone, and tighter pores.

### Q: WHERE CAN I USE THE REVITAGLOW PRO LIGHT THERAPY MASK?

A: The face mask is to be used only on the face. The neck mask is designed to be used on the neck and upper-chest area.

**CAUTION!** Never use the RevitaGlow Pro face mask without the included silicone eye protectors, or look directly into the LEDs when the mask is on, as some wavelengths of light may damage the eyes.

### Q: WHO SHOULD NOT USE THE REVITAGLOW PRO?

A: Please see the full list of contraindications on page 20 of this manual. We recommend everyone perform a skin sensitivity test before using this device; see instructions on page 8.

### Q: HOW OFTEN CAN I USE THE REVITAGLOW PRO?

A: We recommend using the RevitaGlow Pro for 15–20 minutes, three to four times a week for optimal results. We do not recommend using the device for more than 30 minutes per day.

### Q: HOW DO I CLEAN THE REVITAGLOW PRO

A: The masks are made from medical-grade silicone, so they are easy to clean. Simply wipe down the inside of each mask with a soft, dry cloth after each use. **WARNING!** Never allow water or other liquids to come into contact with the device. Do not use harsh detergent or abrasive, corrosive, solvent, or chemical cleaners. Make sure to turn off the RevitaGlow Pro and allow it to cool down before cleaning.

We recommend washing your face, neck, and chest before use to help keep the masks clean.

### Q: HOW SHOULD I STORE THE REVITAGLOW PRO

A: Always store the masks in the original box to avoid damaging them. Make sure to disconnect the remote control before storing the masks. Store in a cool, dry, indoor location. Do not store close to the ground, walls, or roof. Do not store other objects on top of the masks as they could be crushed or damaged.

### Q: HOW CAN I EXPERIENCE THE BENEFITS OF LIGHT THERAPY ON OTHER AREAS OF THE BODY?

Check out our other light therapy products, on our website [lifeprofitness.com](http://lifeprofitness.com), and at the end of this manual.

# SAFETY INSTRUCTIONS

Keep this manual in a safe place for future reference.

Before using this product, read all safety warnings and operating instructions. Failure to do so may result in burns, fire, electric shock, serious injury or death, or damage to the product or property.

## CONTRAINDICATIONS

- **Do not use this product if you:**
  - Have swollen or inflamed skin, or open or bleeding wounds in the treatment area.
  - Are pregnant, suspect you may be pregnant, or are planning to become pregnant; or if you are breastfeeding or plan to begin breastfeeding.
  - Have cancer or suspect you may have cancerous lesions. Do not use over malignant or benign tumors.
- **Consult your physician before using this product if you:**
  - Are under the care of a physician for a pre-existing health condition.
  - Have ever had symptoms related to epilepsy (seizures or loss of consciousness) when exposed to flashing lights.
  - Take steroid medication, use a topical steroid, or receive steroid injections.
  - Have recently had surgery, LASIK or PRK eye surgery, or skin filler injections, if you have breast implants, or if you have a tattoo in the treatment area.
  - Have a condition that may make you sensitive to light or sunlight, such as Lupus, some forms of eczema, light-induced migraines, albinism, and rosacea.
  - Take a topical or oral medication that may cause photosensitivity (sensitivity to sunlight), including some antibiotics, antifungals, antidepressants, antipsychotics, oral contraceptives, psoralens, cardiac, diabetic, blood pressure, and cholesterol medications, chemotherapy drugs, pain medications, nonsteroidal anti-inflammatory drugs (NSAIDs), diuretics, cold and allergy medications, and retinoids (such as Retin-A and Retinol).
  - Use a product that may cause photosensitivity, such as alpha-hydroxy acids (like glycolic acid), beta-hydroxy acids (like salicylic acid), Retin-A and Retinol, melatonin, citrus essential oils, St. John's Wart, acne products, antibacterial soap, and coal tar and petroleum products.
  - Are or may be sensitive to red light or near-infrared light.

## DISCLAIMER

- This product is not a medical device. This product and the information in this manual are not intended to diagnose, treat, cure, or prevent any disease. The health benefits suggested or implied in this manual, other product literature, and company website are not certified or endorsed by any regulatory authority or medical institute.
- The use of this product is entirely at the user's discretion. Please read all instructions and safety information carefully before using this product. We assume no responsibility and expressly disclaim any and all liability for personal injury, death, property damage or loss sustained through improper use, failure to follow the instructions and warnings in this manual, improper setup, or inadequate or improper maintenance or neglect of this product.
- It is the responsibility of the owner to ensure that all users of this product are adequately informed of all warnings and cautions.
- Use this product only as instructed in this manual.

## WARNING

**To reduce the risk of burns, fire, electric shock, serious injury or death, or damage to the product or property:**

- Only use the provided charging cable at the specified voltage to charge the device. Using a charging cable other than the one provided may result in fire or explosion.
- Do not use the provided charging cable to charge other devices.
- Do not modify, tamper with, or damage the charging cable.
- Never unplug the charging cable by pulling on the cord.
- Never use a modified or damaged charging cable to charge the device.
- Do not modify, tamper with, damage, or attempt to disassemble the device. This device has no user-serviceable parts.
- Always inspect the device and charging cable for damage, wear and tear, or fraying before each use. Do not use if damaged, malfunctioning, or if the device has been exposed to water.
- Keep the device and charging cable away from flammable or explosive items, chemicals, fire, and heat sources, and direct sunlight at all times. Do not use or charge in high temperatures or direct sunlight. Do not use or charge under a blanket or pillow. Excessive heat can cause a battery explosion, fire, electrocution, serious injury, death, or property damage.
- Do not operate or charge in the presence of aerosol (spray) products or corrosive gases, or where concentrated oxygen is being administered.

- Do not use the device while it is charging.
- Keep away from liquids. Do not use outdoors, in high-moisture environments, or in any place where the device may become wet or damp.
- Do not immerse in water. If the device becomes wet, do not use.
- Do not plug in or unplug the charging cable with wet hands.
- Do not use the device over wet skin or clothing.
- Do not use outdoors. Do not use during electrical storms.
- Do not use the device while it is charging.
- Keep sharp objects away from the device and charging cable.
- Do not use the charging cable with an extension cord.
- Never leave the device unattended while running or charging. Unplug the charging cable as soon as the device is fully charged. Do not overcharge.
- Stop using the product immediately if you feel pain or discomfort.
- Do not operate the device while sleeping, driving, smoking, or under the influence of drugs or alcohol.
- Do not use this product on sleeping or unconscious people or infants.
- For adult use only. Keep away from children and pets.
- This device is not intended for use by adults with diminished mental, sensory, or physical capacity unless they are closely supervised by a responsible adult.

#### **⚠ CAUTION**

##### **To reduce the risk of minor or moderate injury:**

- Do not use this product in combination with ointments, salves, liniments, balms, or other topical pain-relievers that contain ingredients that produce heat (such as capsaicin), as this may result in burns.
- Do not use sheet masks or harsh products such as acids, acne treatments, or retinols under the masks.
- Do not wear metal jewelry or accessories in the treatment area, as metal may heat and cause burns.
- Ensure the face mask is positioned properly on your face so your eyes are level with the eye openings to prevent light exposure to your eyes.
- Do not look directly into the LED lights while the device is powered on.
- Keep away from long hair to avoid getting it caught in the Velcro®.

## **CLEANING AND STORAGE**

**⚠ WARNING!** Do not allow water or other liquids to come into contact with the device. Do not immerse the device in water or other liquids.

- Use only over clean skin to keep the device clean.
- Turn off, unplug, and allow to completely cool before cleaning or storing.
- Wipe the device with a soft, dry cloth after use.
- Do not use harsh detergent or abrasive, corrosive, solvent, or chemical cleaners to clean the device.
- Store the device in a cool and dry indoor location.
- Do not store other objects on top of the device. Store in the original box to prevent damage.
- Do not attempt to disassemble or repair the device. This device contains no user-serviceable parts.

#### **NOTICE**

- Do not sit, stand, or place objects on the masks. Excessive force or weight applied to the masks can damage them.
- Do not wrap the charging cable around the masks to avoid damaging them.
- Keep away from sharp objects that could damage the device or LEDs.
- Do not insert objects into the USB ports.
- Unplug the product immediately in the event of a power failure.
- This product is intended for in-home use only. Do not use in any commercial, rental, institutional, or therapeutic setting.
- Dispose of product and all accessories according to state and federal regulations.
- Do not use for more than 30 minutes a day.

## TROUBLESHOOTING GUIDE

Troubleshoot simple issues you might experience with your RevitaGlow Pro using the table below. Contact a customer support representative for additional assistance at **(800) 563-6604** or **support@lifeprofitness.com**. Please do not attempt to repair the RevitaGlow Pro on your own.

ISSUE	POSSIBLE REASON	HOW TO RESOLVE
<b>DEVICE IS NOT WORKING</b>	Device is not charged.	Charge the device.
	Device is not turned on.	Press and hold the On/Off button to turn on.
<b>DEVICE STOPPED WORKING SUDDENLY</b>	Device shuts off after the set working time.	Turn the device on to begin a new treatment session.
<b>INTENSITY IS TOO STRONG OR TOO WEAK</b>	The brightness level (strength) or pulse frequency (in Hz) selected is not optimal.	Choose a different brightness level and/or pulse frequency using the Settings button. We recommend starting with the lowest brightness and pulse levels.
<b>SOME LED LIGHTS DO NOT APPEAR TO BE ON WHILE DEVICE IS RUNNING</b>	Near-infrared (NIR) light is not visible to the naked eye.	If the mode is set to NIR, the LEDs may not appear to be on. However, as long as the timer is counting down, the device is working.
<b>TREATMENTS DO NOT APPEAR TO BE WORKING</b>	The color mode selected is not optimal for the desired results.	Choose a different mode: red (default), blue, near infrared, or pink.
	Not enough treatments have been performed.	It may take up to 3-6 weeks of treatments to see results.



## LIFETIME WARRANTY

Lifepro Fitness creates quality, durable exercise products and we stand by that quality with a lifetime warranty on all of our products. If the RevitaGlow Pro ever breaks (and we doubt it will), we'll send you replacement parts and show you how to repair it. If the RevitaGlow Pro cannot be repaired, we'll replace it—free of charge. Register the RevitaGlow Pro at [revitaglowpro.lifeprofitness.com](https://revitaglowpro.lifeprofitness.com) to activate your warranty within 14 days of purchase.

## PRODUCT SPECIFICATIONS

### UNIT SPECS

**Face Mask Size:** 15.7" × 8.3" × 2.1"

**Neck Mask Size:** 8.7" × 11.8" × 2.1"

**Net Weight:** 0.62 lb / 0.53 lb

**Total LEDs:** 234

**Face:** 114 | **Neck:** 120

**LED Wavelengths:**

**Red:** 630 nm | **Blue:** 415 nm

**NIR:** 830 nm | **Pink:** 630+415 nm

**LED Life Expectancy:** 50,000 hrs

**Material:** Medical-grade silicone

**Operating Temperature:** 32–95 °F

### MICRO USB CHARGING CABLE

**Rated Input:** AC100–240V

**Rated Output:** DC 5V–1A

### BATTERY

**Rated Voltage:** 3.7 V DC

**Type:** Lithium-ion

**Capacity:** 2000 mAh

**Working Time:** 120 minutes

**Charging Time:** 40 minutes

WELLNESS RECOVERY  
**REVITAGLOW PRO**  
LIGHT THERAPY MASK

MADE IN CHINA

FROM OUR WELLNESS RECOVERY COLLECTION

## ALLEVARED

LIGHT THERAPY BELT

With the Lifepro AllevaRed Light Therapy Belt, you can experience the therapeutic benefits of red light therapy from the comfort of your own home—no need for expensive trips to the spa or doctor's office. Red light therapy provides a wide variety of benefits, including pain relief and quicker recovery after injury. Together, red (660 nm) and near-infrared (850 nm) light treat both the surface of the skin and deep below the surface, helping cells make energy to repair themselves, improving skin health, and providing anti-aging and fat loss benefits. Just a few treatment sessions a week can help you achieve improved wellness.

The easy-to-wear belt provides full coverage for your lower back and waist and can be used on your upper back, arms, legs, and feet. Your pet can also take advantage of the therapeutic benefits of the AllevaRed. Help your pet find relief from chronic joint pain, lose weight, and reduce inflammation.

The AllevaRed offers customizable treatment options for your wellness recovery. Five intensity levels, three modes (red, near-infrared, and red + near-infrared), and an optional pulsed red light feature allow you to choose the perfect settings for each therapy session.

### ALLEVARED BENEFITS

- Reduce muscle and joint pain
- Reduce inflammation
- Rejuvenate skin
- Blast fat
- Boost circulation





Access Lifepro TV, our library of free personal training videos on the web at [revitaglowpro.lifeprofitness.com](http://revitaglowpro.lifeprofitness.com) to learn how to get the most out of your Lifepro® RevitaGlow Pro and achieve the results you want.



**YOU'VE  
GOT  
THIS**