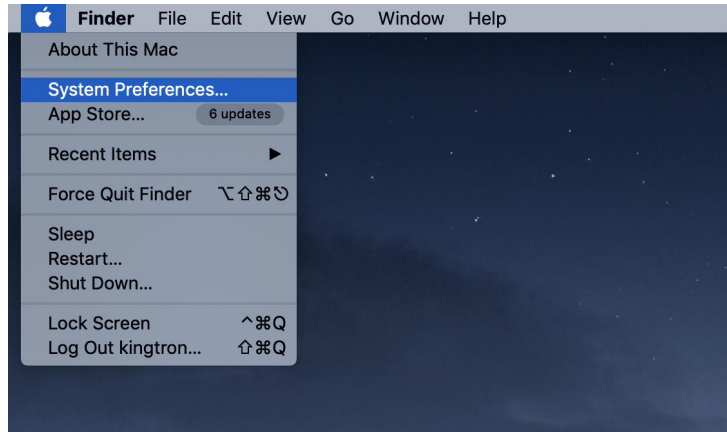


## Mac System Problem

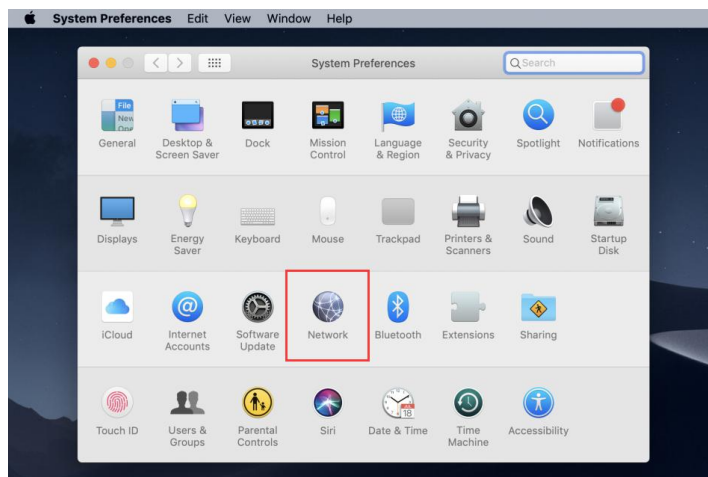
### 1. Network Connection Problem

When your macbook laptop uses the network port first time, you need to set the RJ45 as following:

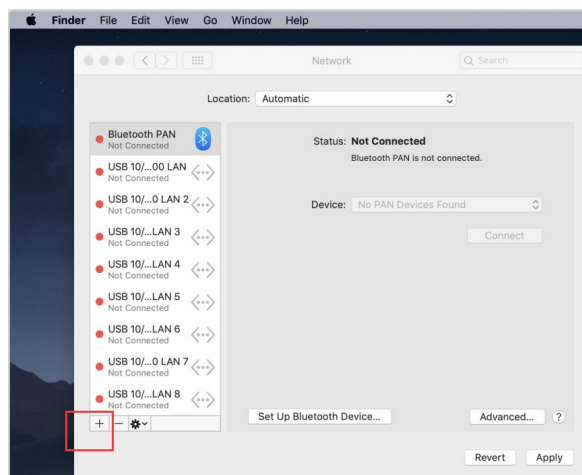
Step1: Click Apple symbol and select System Preferences



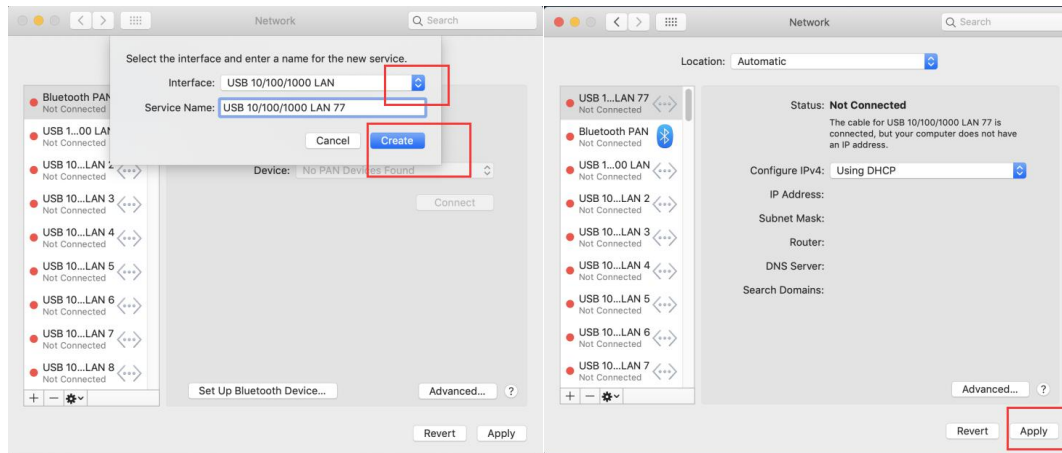
Step2: Select Network



Step3: Click on "+" create a new service



Step4: Click the interface bar and select USB 10/100/1000 LAN. And the click "create" and "Apply"



## 2. Audio Problem

*Click Computer monitor sound symbol and you can select sound output you need.*



## 3. Display

Step 1: Click Apple symbol and select System Preferences

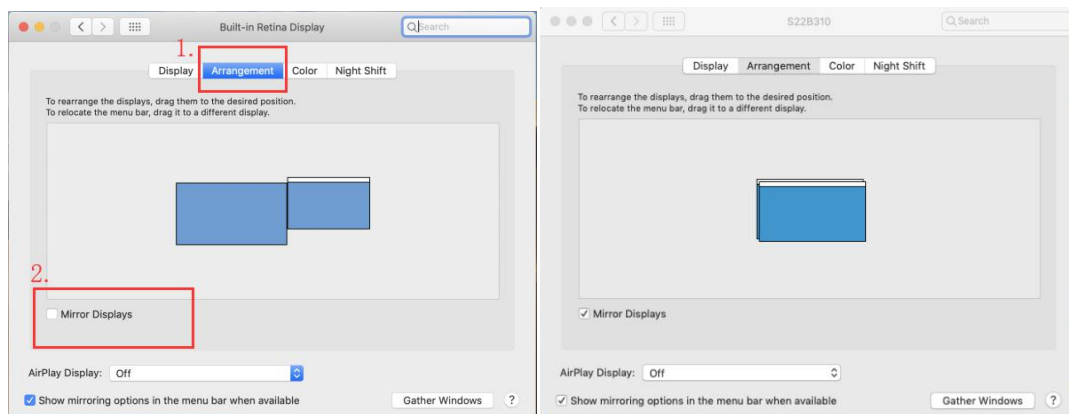


## Step 2: Select Displays

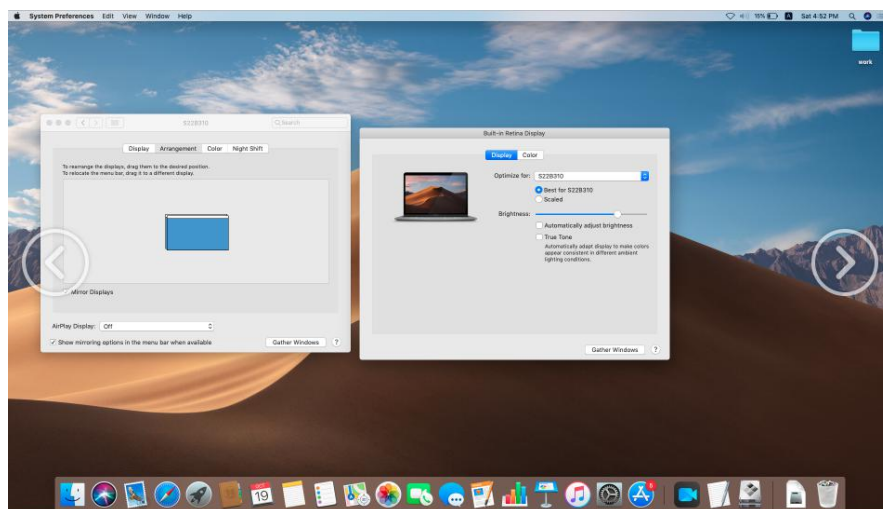


Step 3: Note: for apple systems, it only supports mirror mode.

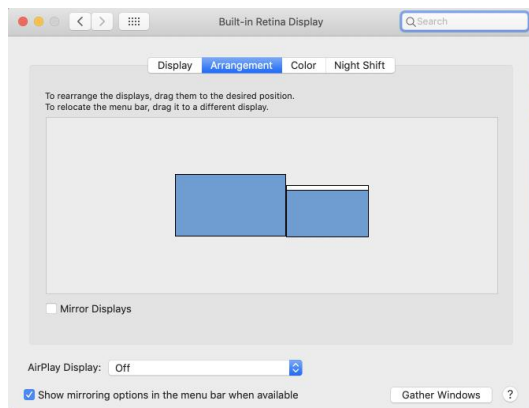
Situation 1: select Arrangement and check the mirror displays (computer screen will be the same as display monitors)



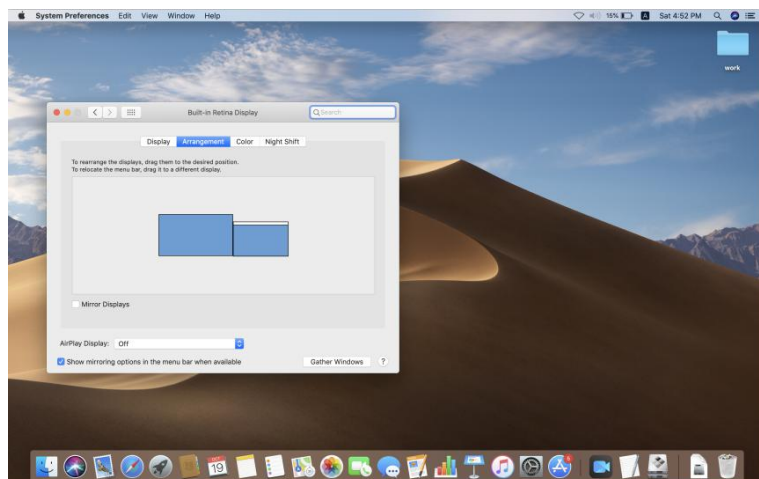
Sample: All screens will have the same picture



Situation 2: select Arrangement and do not select the mirror displays (computer screen will be the different with display monitors, but monitors will be the same displays.)



Sample:  
Computer screen



Other Monitor Screens

