

## Manuals+

User Manuals Simplified.



# JBL WAVE 300TWS Earbuds User Guide

December 9, 2021 December 9, 2021

[Home](#) » [JBL](#) » JBL WAVE 300TWS Earbuds User Guide 

## Contents [ [hide](#) ]

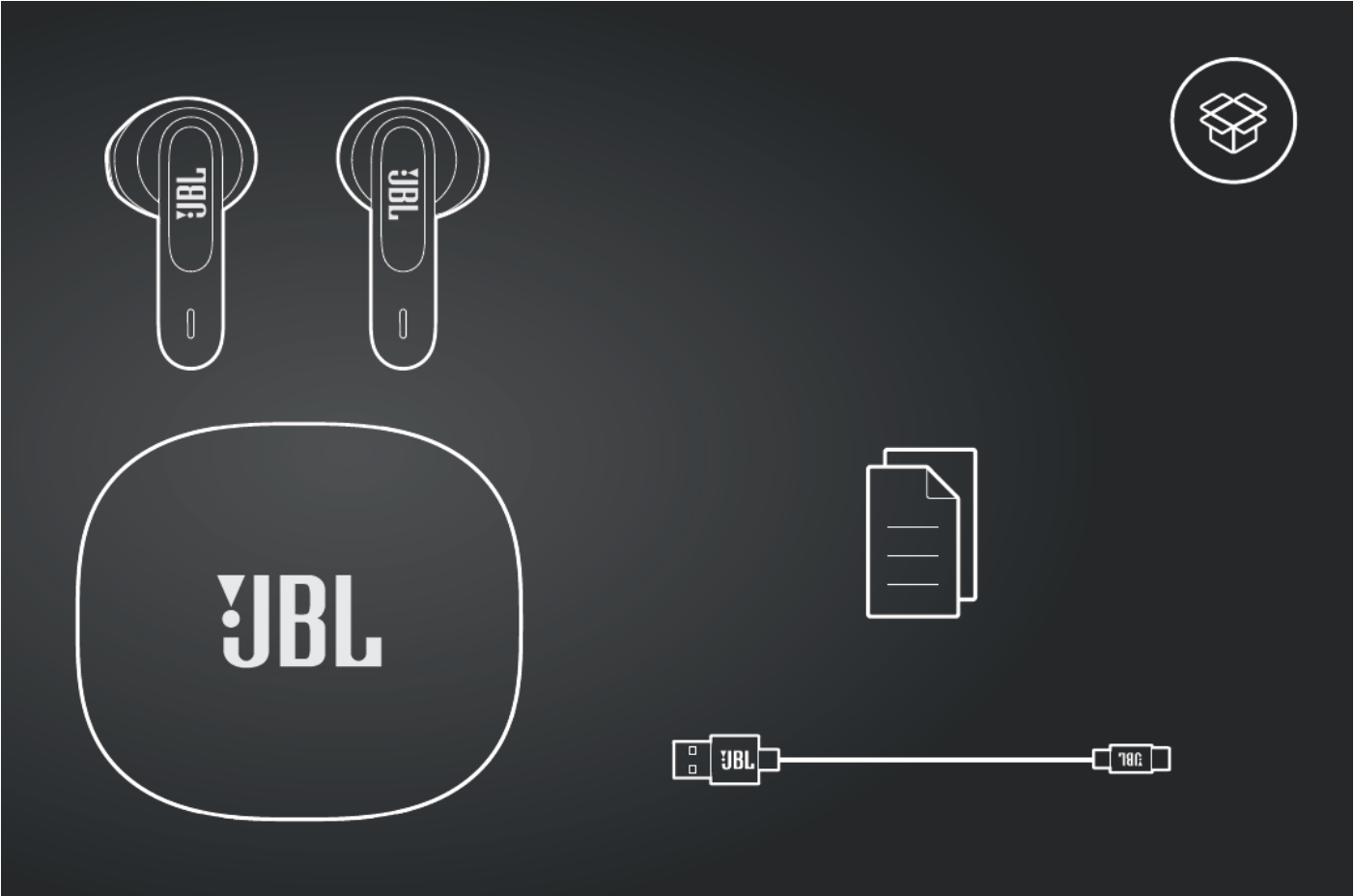
- [1 JBL WAVE 300TWS Earbuds](#)
- [2 WHAT'S IN THE BOX](#)
- [3 how to wear](#)
- [4 FIRST TIME USE](#)
- [5 power on & CONNECT](#)
- [6 DUAL CONNECT](#)
- [7 Controls](#)
- [8 power off](#)
- [9 Manual SETUP](#)
- [10 Charging](#)
- [11 led behaviors](#)
- [12 TECH SPEC](#)
- [13 Documents / Resources](#)
  - [13.1 Related Manuals / Resources](#)



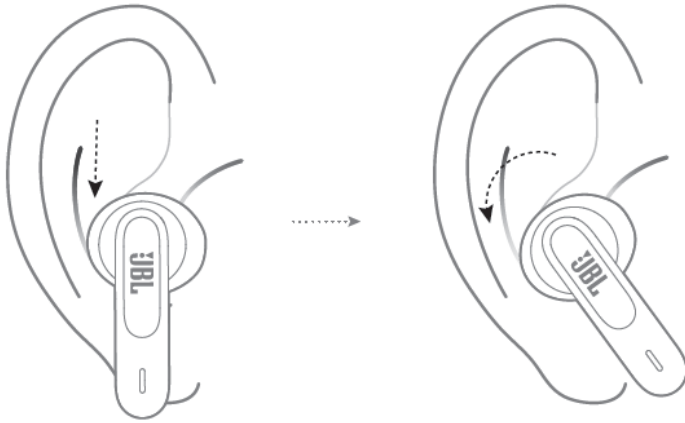
**JBL WAVE 300TWS Earbuds**



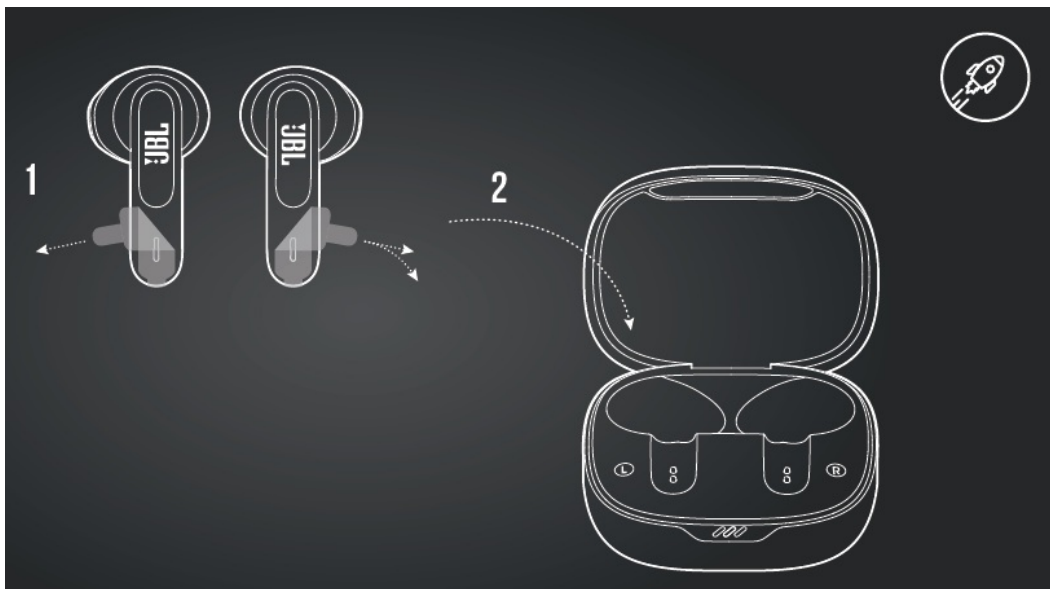
WHAT'S IN THE BOX



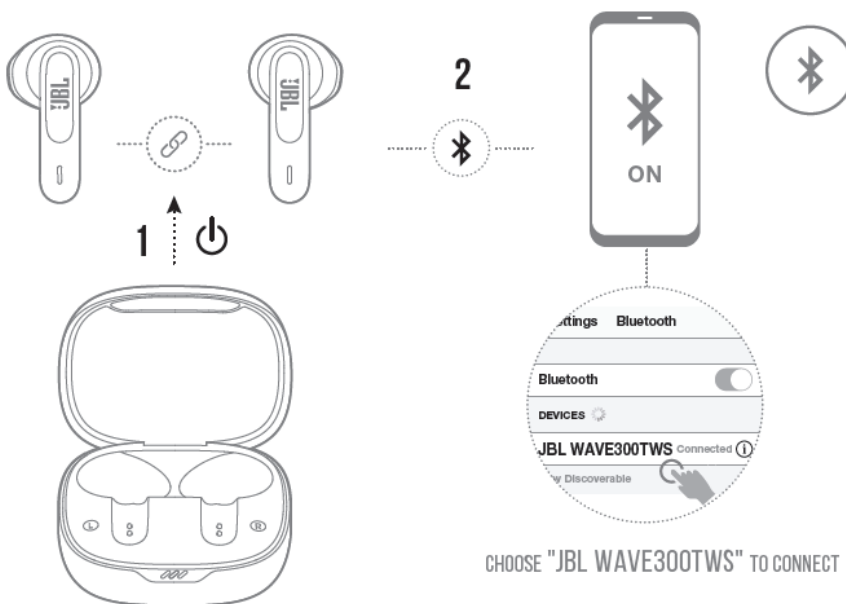
how to wear



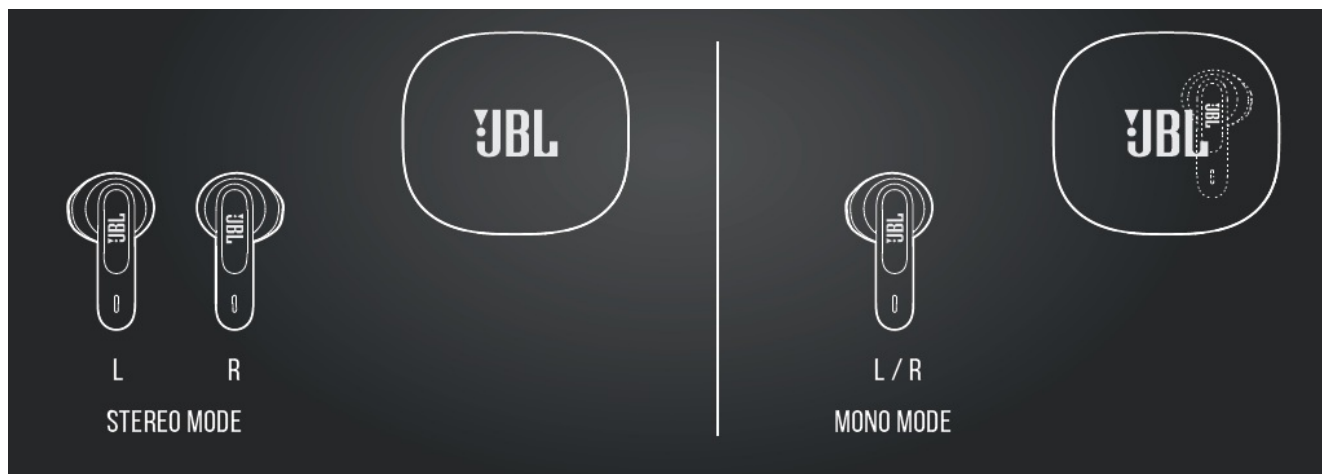
## FIRST TIME USE



## power on & CONNECT

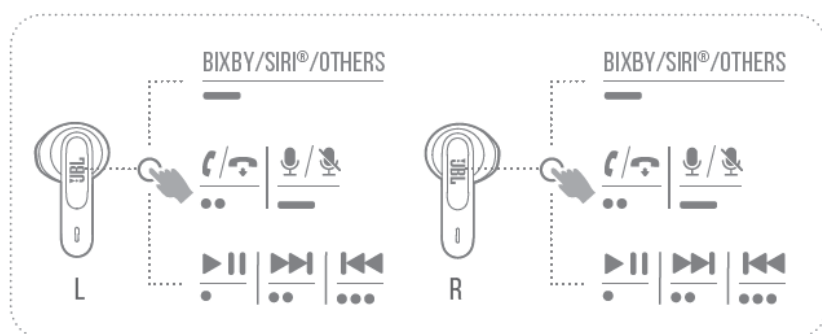


## DUAL CONNECT

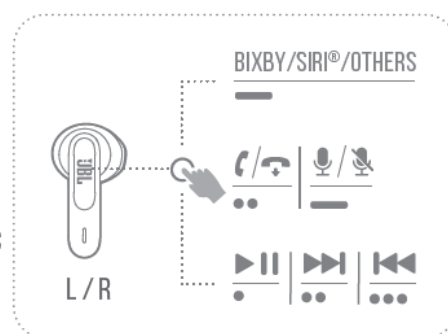


## Controls

### 1. STEREO MODE

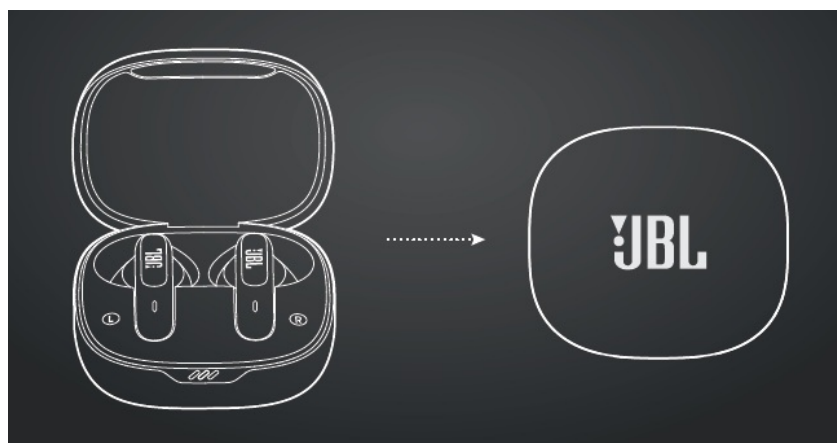


### 2. MONO MODE



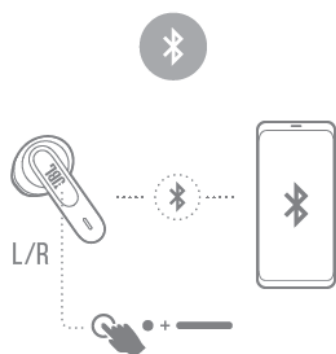
SEAMLESS  
AUTOMATIC  
SWITCH

## power off

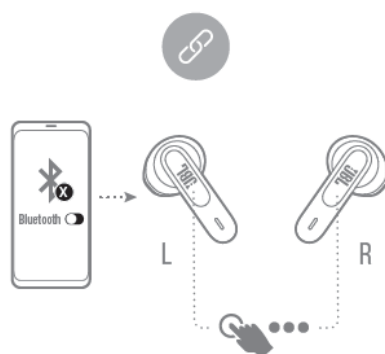


## Manual SETUP

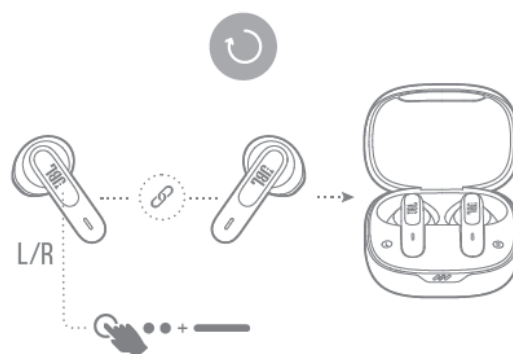
### CONNECT TO A NEW BLUETOOTH DEVICE



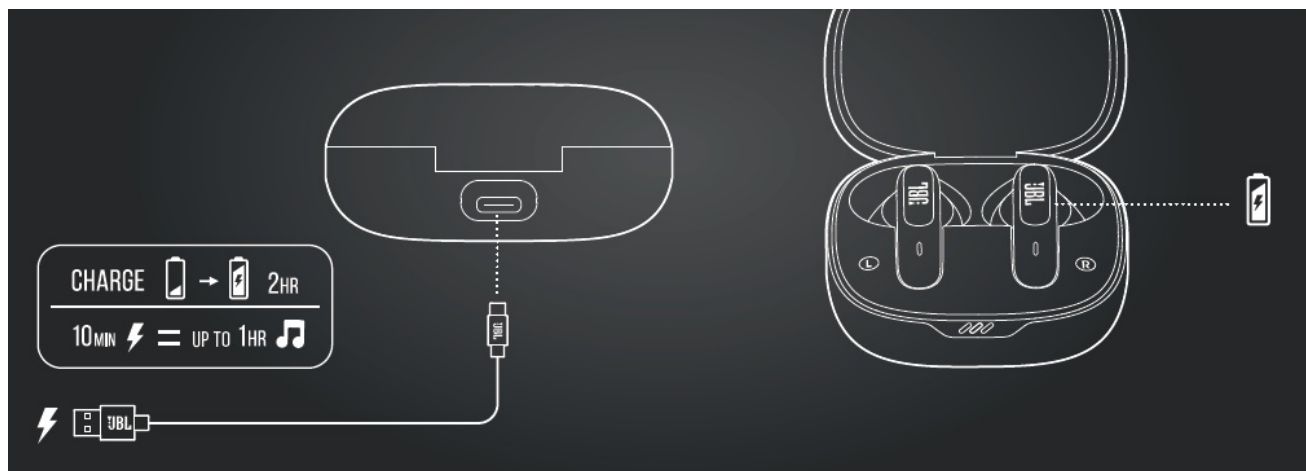
### RECONNECT LEFT & RIGHT



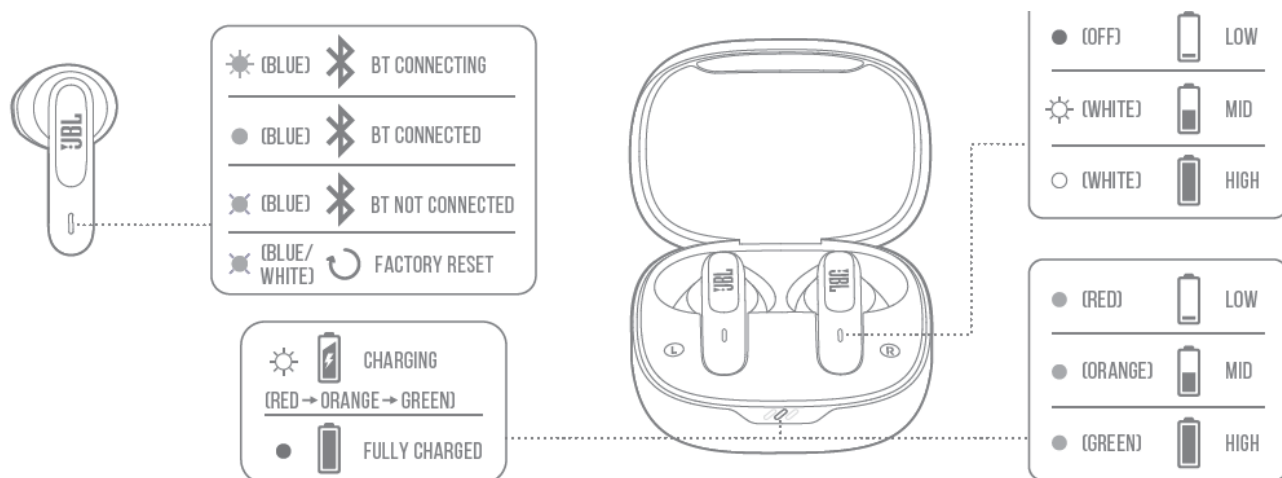
### FACTORY RESET



## Charging



## LED behaviors



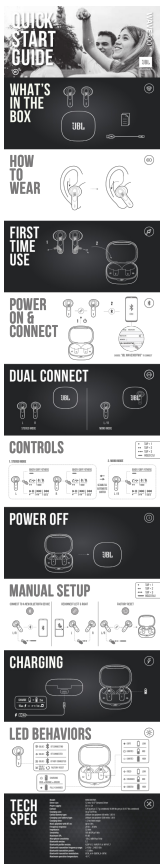
## TECH SPEC

- Model: WAVE300TWS
- Driver size: 12 mm/ 0.47" Dynamic Driver
- Power supply: 5V 1A
- Earbud: 3.85 g per pc (7.7 g combined)/ 0.009 lbs per pc (0.017 lbs combined)
- Charging case: 36 g/ 0.079 lbs
- Earbud battery type: Lithium-ion polymer (40 mAh/ 3.85 V)
- Charging case battery type: Lithium-ion polymer (500 mAh/ 3.8 V)
- Charging time: < 2 hrs from empty
- Music playtime with BT on: up to 6 hrs
- Frequency response: 20 Hz – 20 kHz
- Impedance: 32 ohm
- Sensitivity: 105 dB SPL@1 kHz
- Maximum SPL: 95 dB
- Microphone sensitivity: -38±2 dBV/Pa@1 kHz
- Bluetooth version: 5.2
- Bluetooth profile version: A2DP V1.3 AVRCP V1.6 HFP V1.7
- Bluetooth transmitter frequency range: 2.4 GHz – 2.4835 GHz
- Bluetooth transmitter power: <12 dBm
- Bluetooth transmitter modulation: GFSK, π/4-DQPSK, 8-DPSK
- Maximum operation temperature: 45 °C

TO PROLONG BATTERY LIFESPAN, FULLY CHARGE AT LEAST ONCE EVERY 3 MONTHS. BATTERY LIFE VARIES BY USE AND SETTINGS.

The Bluetooth® word mark and logos are registered trademarks owned by Bluetooth SIG, Inc. and any use of such marks by HARMAN International Industries, Incorporated is under license. Other trademarks and trade names are those of their respective owners.

## Documents / Resources



[JBL WAVE 300TWS Earbuds](#) [pdf] User Guide  
WAVE 300TWS, Earbuds, WAVE 300TWS Earbuds

**Related Manuals / Resources**



[JBL TUNE 225TWS Earbuds User Guide](#)  
JBL TUNE 225TWS Earbuds WHAT'S IN THE BOX HOW TO WEAR First time use power on & connect...



[JBL VIBE100 True Wireless Earbuds User Guide](#)  
JBL VIBE100 True Wireless Earbuds Features and Benefits JBL Deep Bass Sound The sound of your last concert,...

[AMINY T23 Wireless Bluetooth Earbuds User Manual](#)

T23 Wireless Bluetooth Earbuds



[JBL 220TWS True Wireless Earbuds User Guide](#)  
JBL 220TWS True Wireless Earbuds User Guide WHAT'S IN THE BOX HOW TO WEAR FIRST TIME USE POWER...

[Manuals+.](#)

- [home](#)
- [privacy](#)