

# Label Printer driver Installation Instruction(For Windows)

---

**1. Connect one end of the power to the printer and the other end to the outlet**

**Note:** Please use the original power adapter only, in case that the damage caused by charging improperly.

**2. Connect the USB cable to the printer and PC.**

**Note:** If the connection fails, please check whether the usb port matches with you computer or not.

**3. Download the driver software from the original supplied USB stick or from our website:**

**<http://www.jenoteck.com/Printer>**

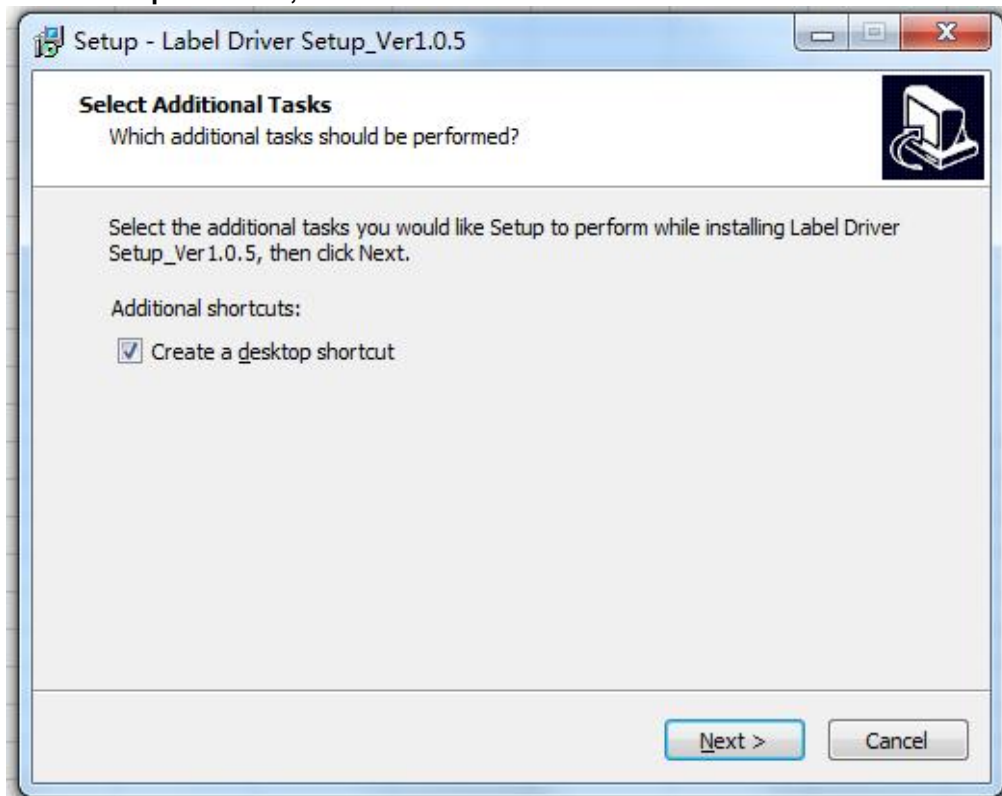
**4. Double click document "LabelPrinter20210603.exe"**



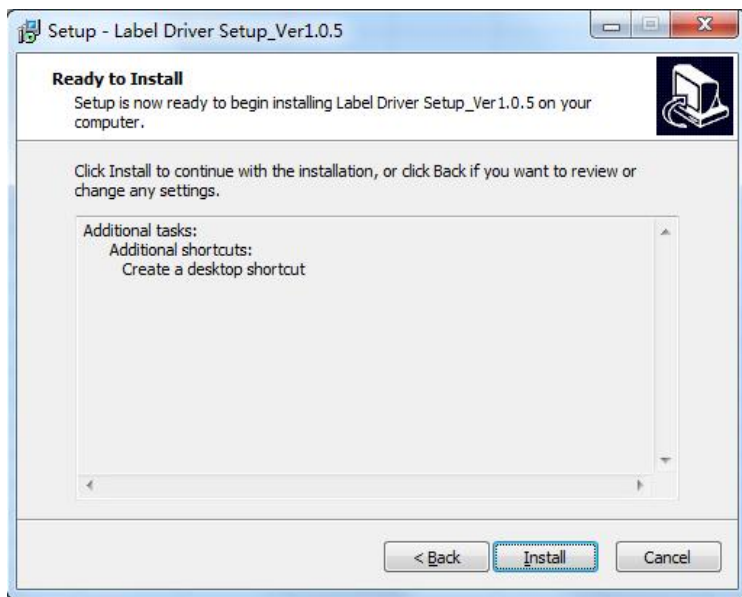
**5. Select Setup Language - English**



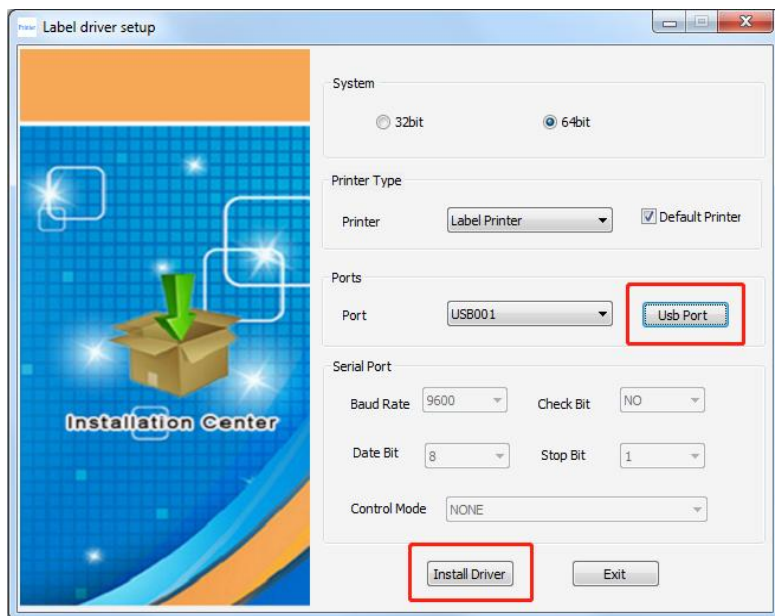
**6. Choose "Create a desktop shortcut", Click "Next"**



## 7. Click "Install"

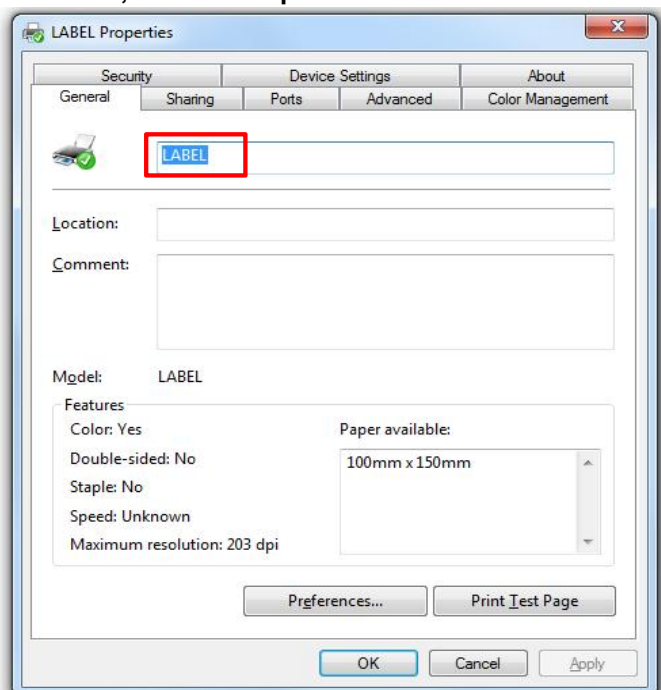


8. Now you will see the label driver setup page, click "Usb Port" to recognize the usb port then click "Install Driver"



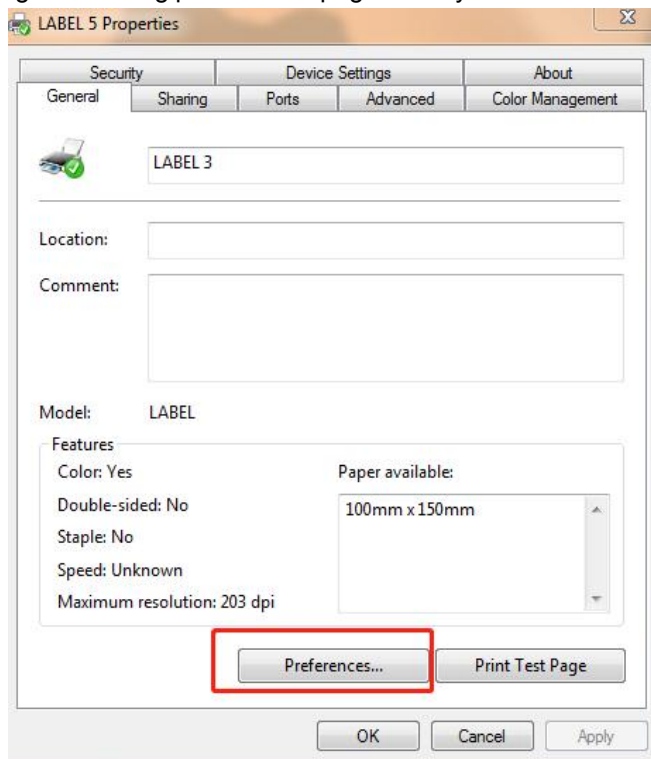
If it pop up error message "no usb printer", it's probably because the printer is not connected to computer correctly. Please double check if the printer is switched on (blue light on top is on) and connected to computer via the black USB cord, or switch to another usb port on the computer to try.

9. After installation is done, rename the printer.

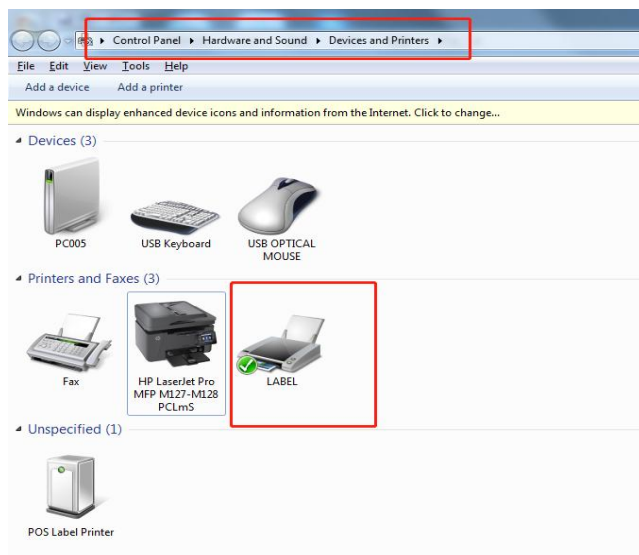


## 10. Set up the printing preferences as you need

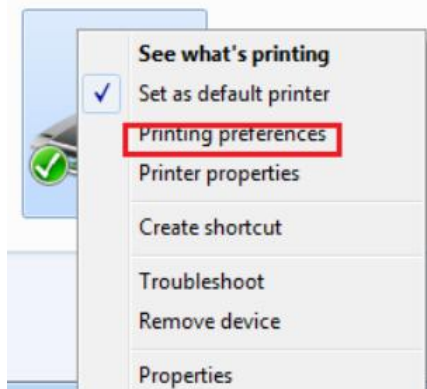
10.1 Click "Preferences" and go to Printing preferences page directly:



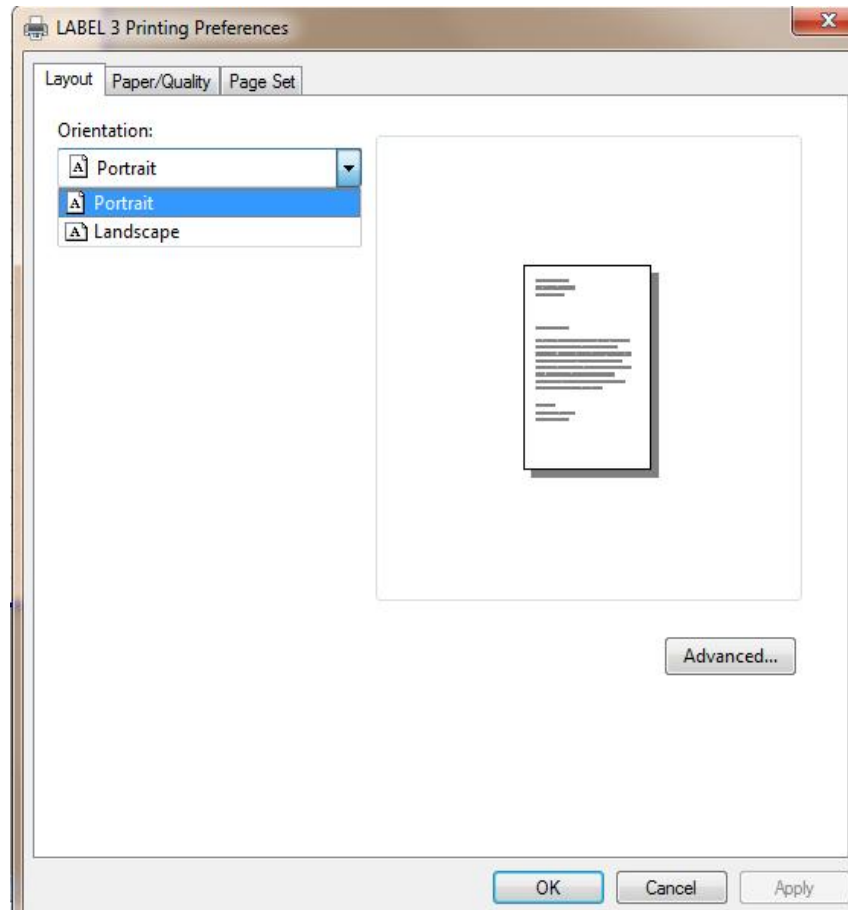
You can also find icon of the new printer at path "Control Panel\Hardware and Sound\Devices and Printers".



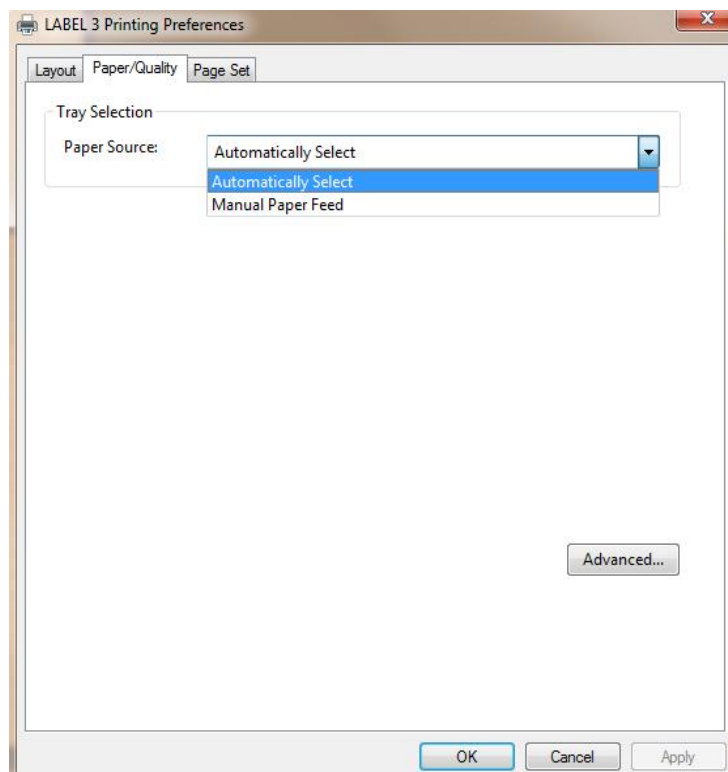
Right click the icon and choose "Printing preferences" to go to the printing preference page



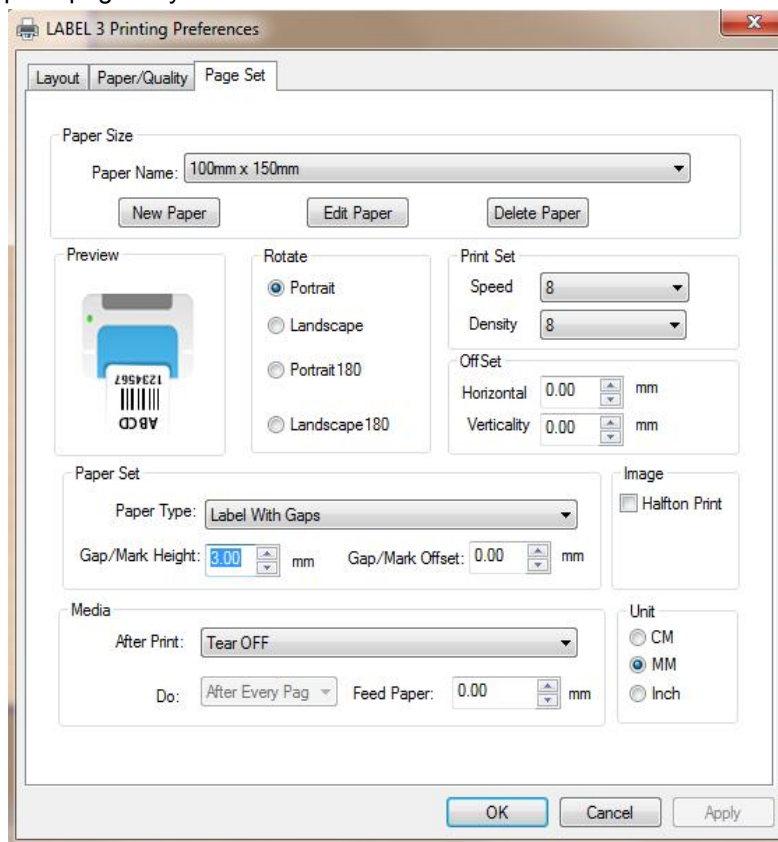
10.2 set up the printing preferences as you need  
Click "Layout" to set up paper orientation(portrait or landscape)



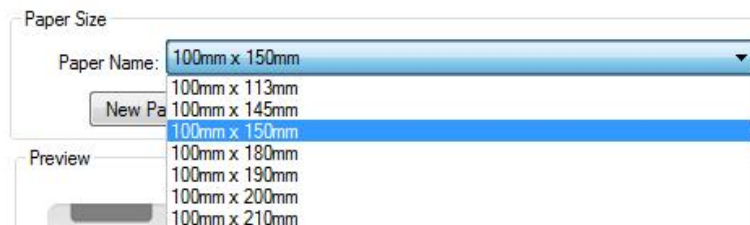
Click "Paper/Quality" to set up Paper Source(default is automatically select)



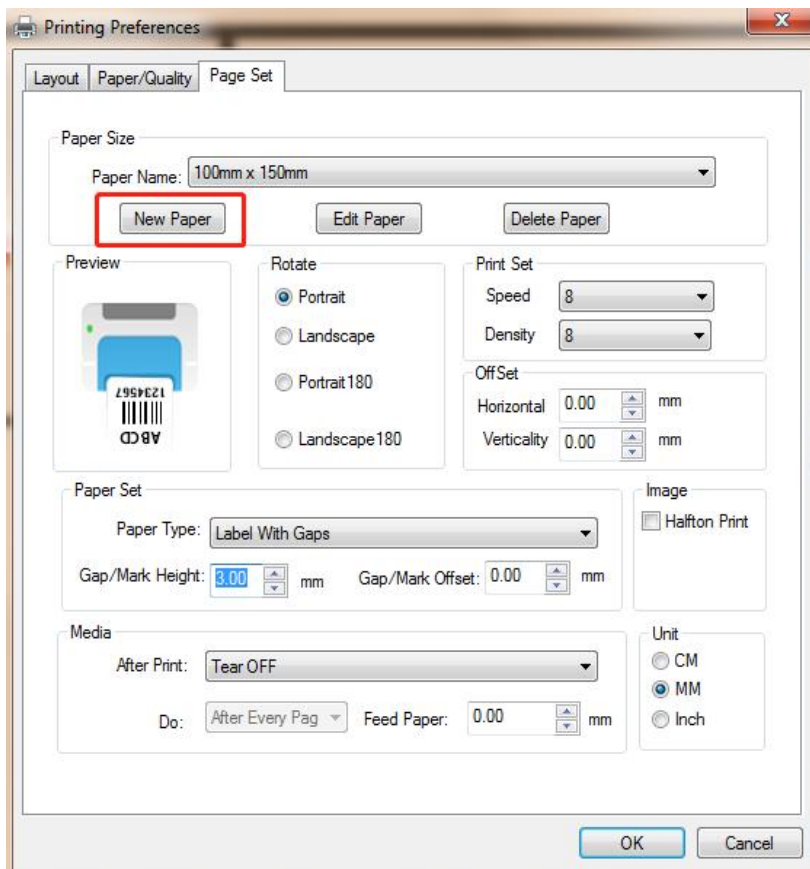
Click "Page Set" to set up the page as you need



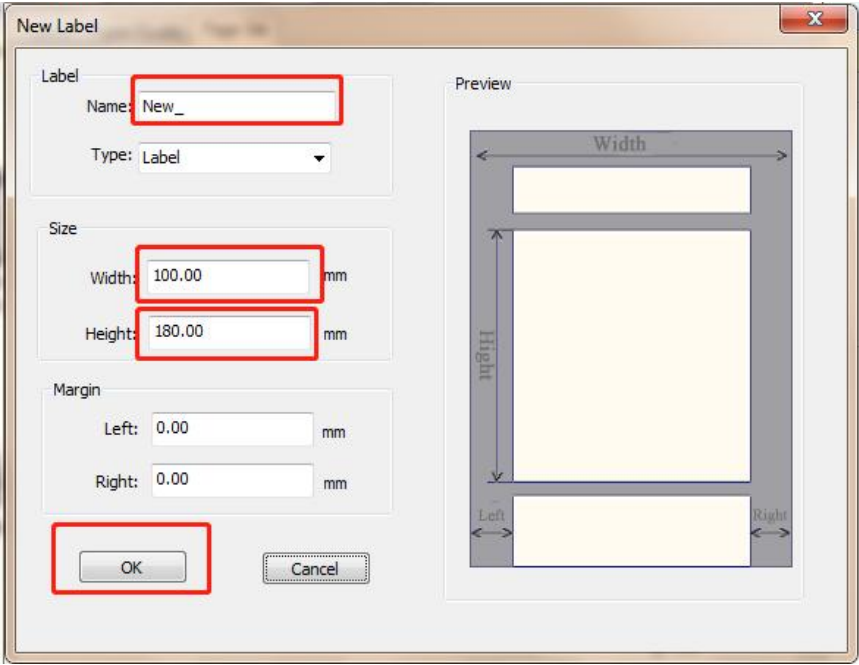
Click "Paper Name" to choose the paper type



If the paper size you are using is not in the list ,please create a new paper size by clicking "New Paper"



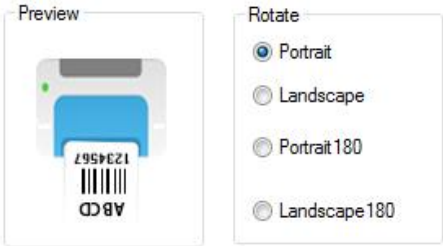
Customize the name and enter the new width and height, then click OK  
after that, you will find the new label size in the drop down list of "paper name"



The "New Label" dialog box is shown with the following fields and options:

- Label**
  - Name: New\_ (highlighted with a red box)
  - Type: Label (dropdown menu)
- Size**
  - Width: 100.00 mm (highlighted with a red box)
  - Height: 180.00 mm (highlighted with a red box)
- Margin**
  - Left: 0.00 mm
  - Right: 0.00 mm
- Buttons**
  - OK (highlighted with a red box)
  - Cancel
- Preview**
  - A visual representation of the label with dimensions Width and Height indicated.

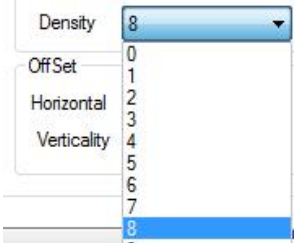
"Rotate" to change the direction of the printing content and preview



The "Rotate" dialog box is shown with the following options:

- Preview**
  - A visual representation of the label with dimensions Width and Height indicated.
- Rotate**
  - ☒ Portrait
  - ☐ Landscape
  - ☐ Portrait180
  - ☐ Landscape180

Density(range: 0-16)  
**Note: please set up the density if the printing is too dark or too light**

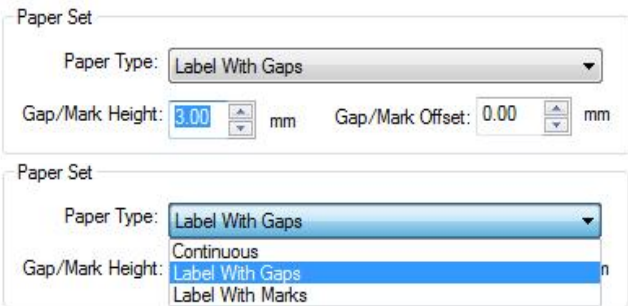


The "Density" dropdown menu is shown with the following options:

- 0
- 1
- 2
- 3
- 4
- 5
- 6
- 7
- 8 (selected)
- 9
- 10
- 11
- 12
- 13
- 14
- 15
- 16

Paper Type

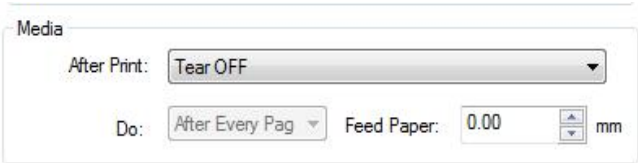
**Note: the default paper type for label printing is "Label With Gaps" with gap height of 3mm**



The "Paper Set" dialog box is shown with the following options:

- Paper Type:** Label With Gaps (dropdown menu)
- Gap/Mark Height:** 3.00 mm (input field)
- Gap/Mark Offset:** 0.00 mm (input field)
- Paper Type:** Label With Gaps (dropdown menu)
- Gap/Mark Height:** 3.00 mm (input field)
- Gap/Mark Offset:** 0.00 mm (input field)

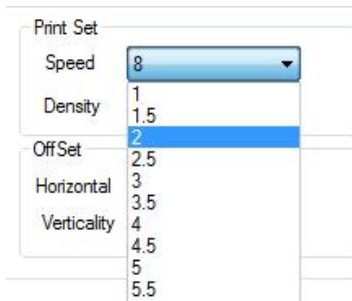
Media



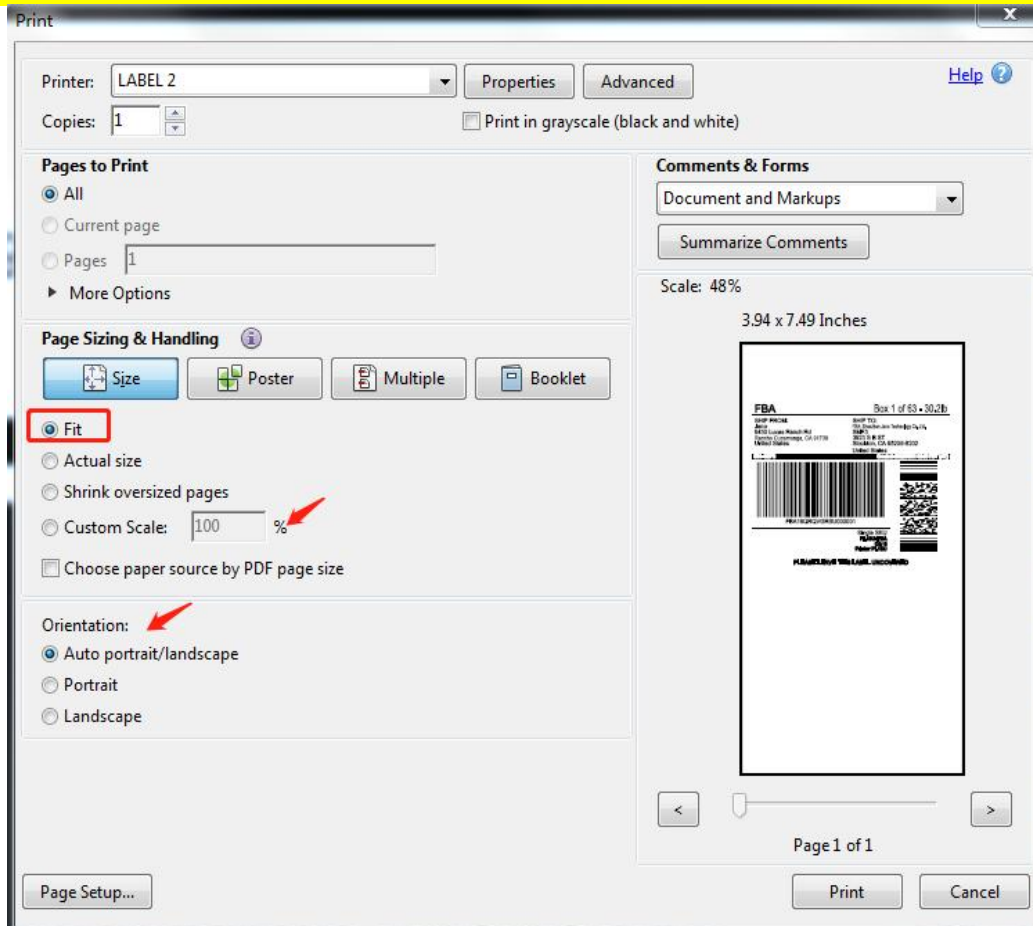
The "Media" dialog box is shown with the following options:

- After Print:** Tear OFF (dropdown menu)
- Do:** After Every Pag (dropdown menu)
- Feed Paper:** 0.00 mm (input field)

Speed(range:1-8):

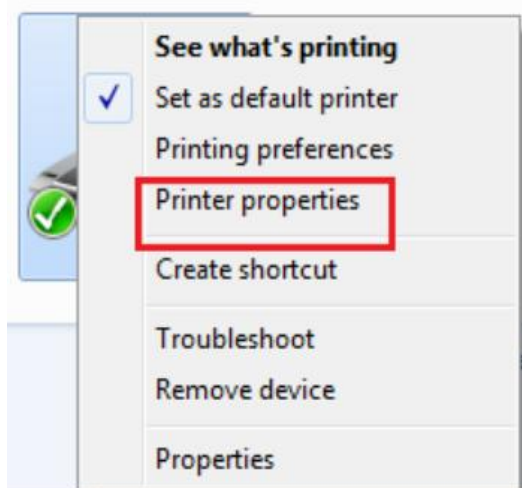


If it prints out too large or too small or sideways, please double check if the label size of your printing file and the paper size you set are consistent with the actual label size. choose "Fit" under page sizing or adjust the scale and orientation manually.



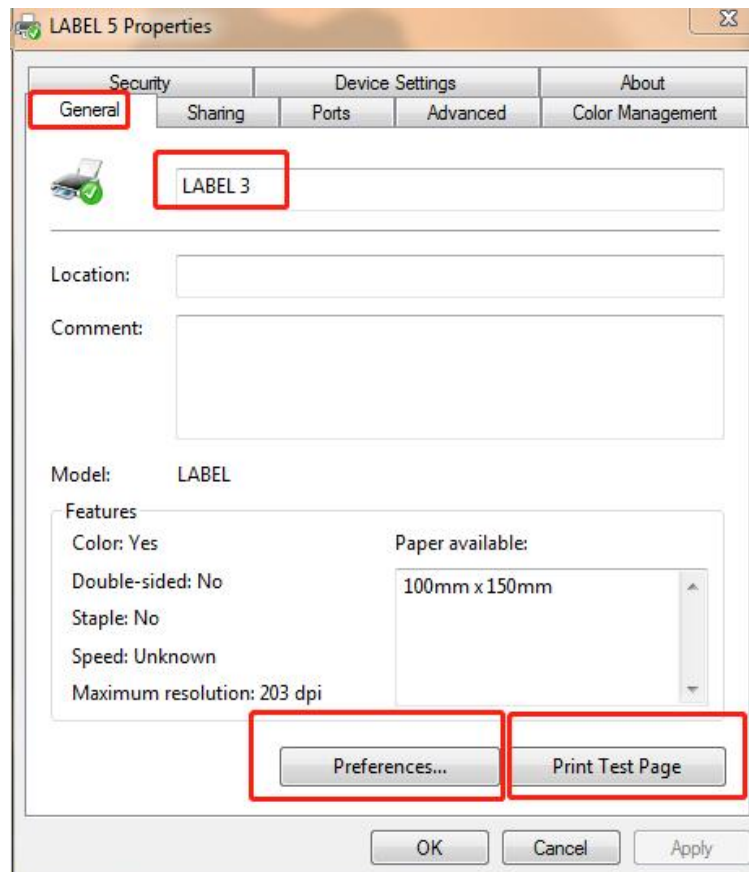
## 11.Set up Printer Properties as you need

11.1 Click "Start" → "Devices and Printers". Right click the icon and choose "Printer properties".

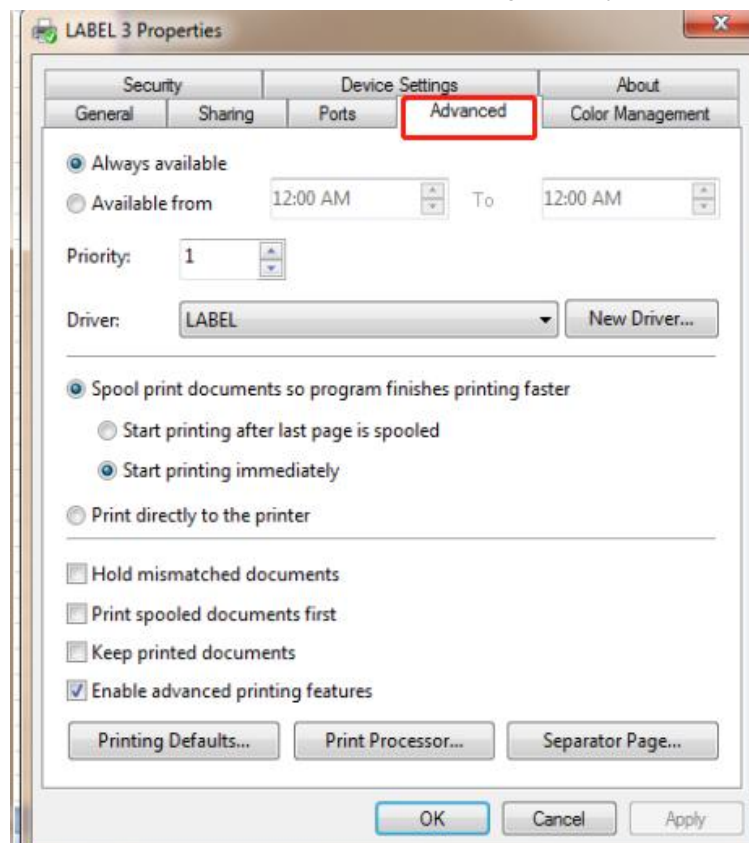


## 11.2 Set up the printer properties as you need

### 11.2.1 Click "General" to rename the printer, print test page or go to preferences page

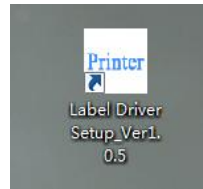


### 11.2.2 Click "Advanced" to set the available time of the printer, default setting is "always available"

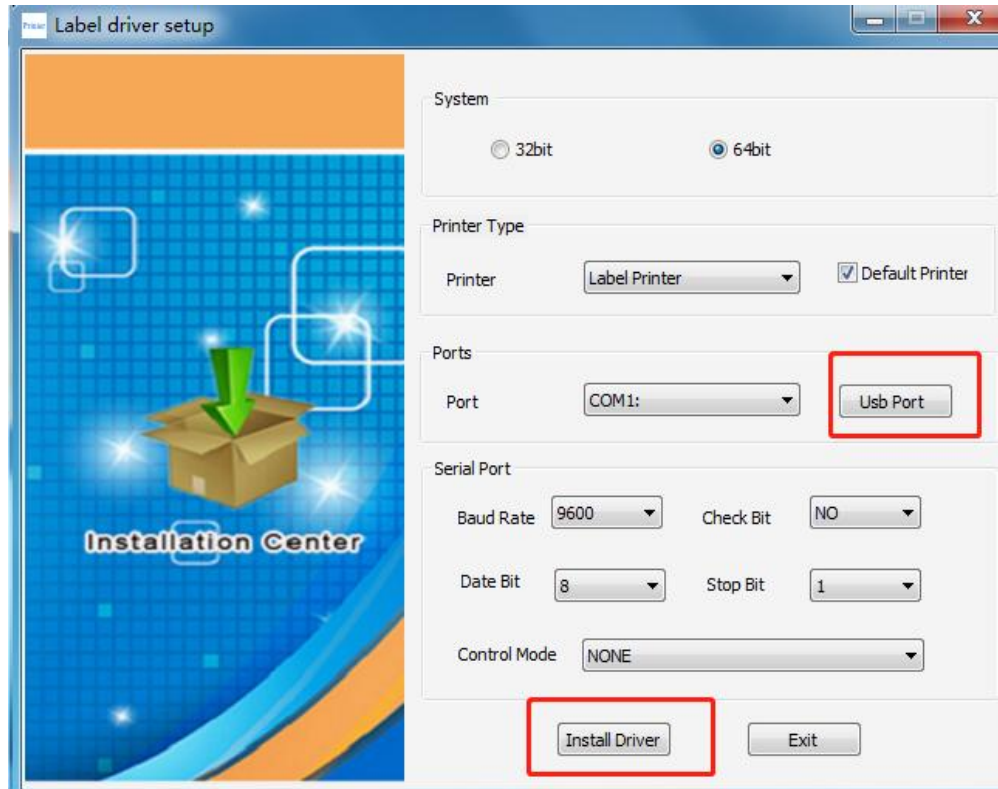


**12. If you connect to another USB port on the same computer, you need to re-match the USB port, otherwise the printer will not work. Method of re-match is as below:**

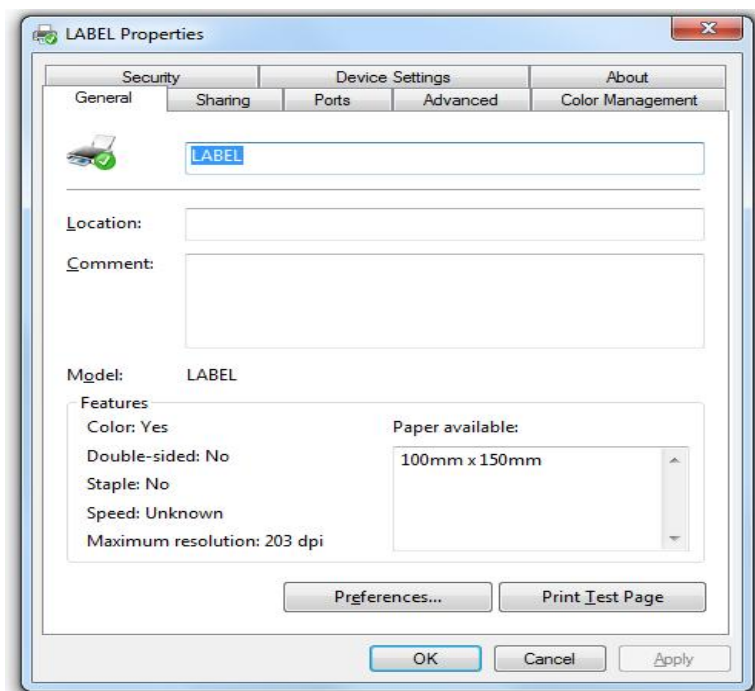
12.1. Click "Start" → Search "Label Driver Setup\_Ver1.0.5" program ,then open it



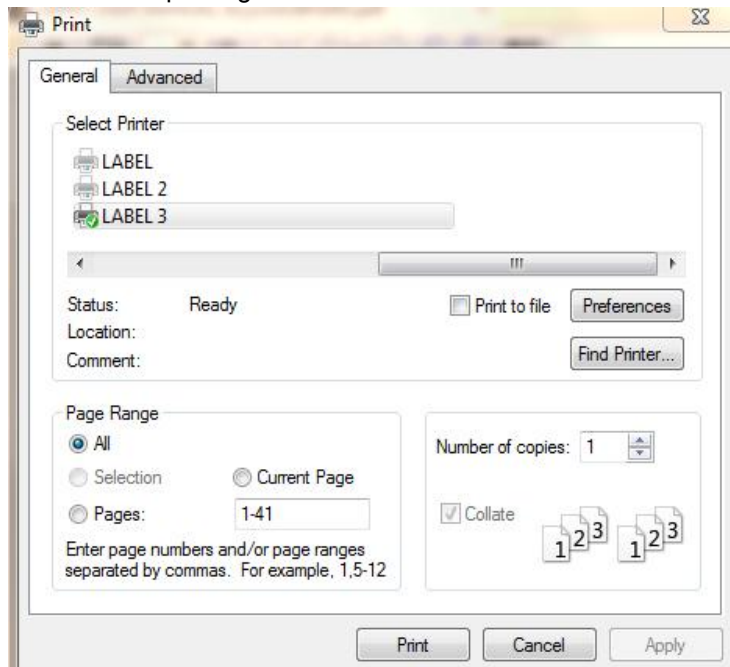
12.2. Click "Usb Port" to recognize the new port, then click "Install Driver"



12.3. After installation is done, rename the printer on the pop up window



12.4 Choose the new printer name for printing.



### 13. Uninstall the driver

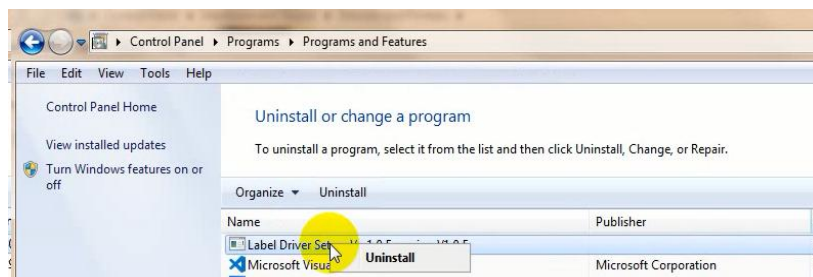
If you don't use the printer any more, please uninstall the driver from your computer as below:

13.1 Switch off the printer or unplug the USB cable before uninstall the driver.

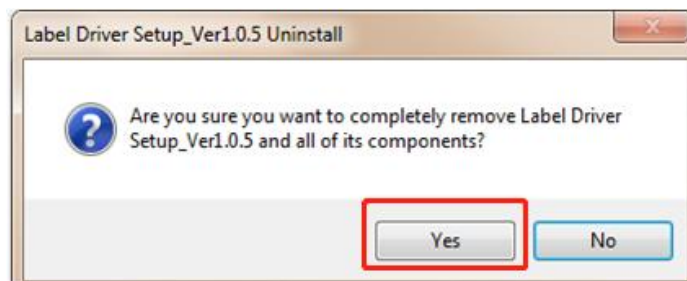
13.2. Go to path "Control Panel\Programs\Uninstall a program"

right click on program"Label Driver Setup\_Ver1.0.5" and click "uninstall, or just double click to uninstall

**Note: the actual soft version might be different from the one on this video**



13.3. Click "Yes" on the pop-up window



13.4 Finally you will see below tips after the driver is removed successfully.

