

SECURA®

Instruction Manual



AUTOMATIC MILK FROTHER



Model: MMF-809-BL
MMF-809-WH



Welcome to the Secura Family !

Congratulations on being the proud owner of your new Secura product. We believe in manufacturing only the highest quality kitchen, home and personal care products for our customers. We are a U.S.-based manufacturer and all our products meet strict standards for manufacturing, safety and performance.

We also believe in providing the best customer service and support in the industry. That is why we provide a two-year warranty that ensures your satisfaction - so you can enjoy your new Secura product for many years to come!

If you have questions or in the rare instance you need to file a warranty claim, please email CustomerCare@thesecura.com. For fastest response, please include product name and model #, proof of original purchase, complete contact information, and detailed information about the issue, including pictures when applicable.

Your feedback and suggestions are also important to us, so please email them to us at CustomerCare@thesecura.com.

The Secura Team

SECURA[®]

Copyright © 2021-2024 – Secura, Inc. - All rights reserved.

The material in this publication is protected under International and Federal Copyright Laws and Treaties, and as such, any unauthorized reprint or use of this material is strictly prohibited.

No part of this book may be reproduced or transmitted in any form without the written permission of the author, except for the inclusion of brief quotations in a review.

Reproduction or translation of any part of this work without the permission of the copyright holder is against the law.

TABLE OF CONTENTS

TABLE OF CONTENTS	1
GENERAL SAFETY INSTRUCTIONS	2
PARTS LIST	5
GETTING STARTED	6
INSTRUCTIONS	7
OTHER USEFUL INFORMATION	10
TECHNICAL INFORMATION	11
DISPOSAL	11
CONTACT	11
MANUFACTURER'S LIMITED WARRANTY	12

Automatic Milk Frother



To reduce the risk of fire, injury or electrical shock along with extending the life of your electrical appliances, please read and follow all of the information in this manual before using and save it for future reference.

GENERAL SAFETY INSTRUCTIONS

Before using the Secura Milk Frother, it is vital that you read all parts of this manual, including safety details and product instructions. When you follow the safety instructions, you will be able to avoid the risk of electric shock, fire, or injury to yourself and others. Be sure to keep this manual for future reference.

When using any electrical appliance, be sure to follow precautions to ensure your safety.

- Be sure that the electrical outlet being used is capable of producing the right voltage and ensure that the outlet is grounded.
- **WARNING!** Never immerse an electrical appliance or any part of the cord or plug in any liquids including water. Electrical connections should never be exposed to water due to the risk of electric shock or electrical fire. Never operate the device with wet hands.
- Do not use an extension cord with this electrical appliance.
- Be sure to keep the electrical cord off of the ground to avoid trips and falls.
- Do not damage the cord with sharp edges or heat. Additionally, do not bend, smash, or strain the cord to avoid damage.
- Before using the appliance, be sure to unwind the power cord and ensure that the cord has no kinks or crimps.
- Do not use the appliance if it malfunctions, or any part has become damaged.
- Contact customer service if the device has become damaged.
- Unplug the appliance from the outlet before installing the whisk or cleaning the appliance.

- To disconnect the appliance, be sure to turn off the power and then gently pull the plug from the wall outlet. Do not unplug by pulling on the cord itself.
- This is not a commercial appliance. It should only be used for household purposes and should only be used in indoor conditions.
- The purpose of this appliance is for frothing and/or heating milk. It should not be used for any other purpose.
- This appliance should only be used by adults. It should not be used by anyone with reduced mental or physical capacity. At all times, the use of the appliance should be supervised by someone with full experience and knowledge of using electrical apparatuses.
- Children should not be allowed to play with or near the milk frother.
- The use of attachments and accessories that are not intended for the device by the manufacturer could result in personal injury, electric shock, or fire.
- Improper handling or setup of this device could risk personal injury from electric shock as well as fire. Any damage or injury from improper use of the appliance puts no liability on us.
- The device should only be used on flat, even surfaces.
- Use of this device on wood surface of any type could result in the damage of that surface.
- Never operate the device without milk.
- The power cord is intended for this device only and should not be used with any other appliance.
- Only fill the milk container to the appropriate fill level. Do not overfill.
- Do not touch any moving parts within the frother or you could suffer from injury.
- **WARNING!** Never leave the device on and unattended. When not in use, ensure that the device is switched off and unplugged.

WARNING!

DO NOT submerge milk frother under water or put in dishwasher.

Automatic Milk Frother



CAUTION:

To avoid circuit overload, do not operate another high wattage appliance on the same outlet or circuit.

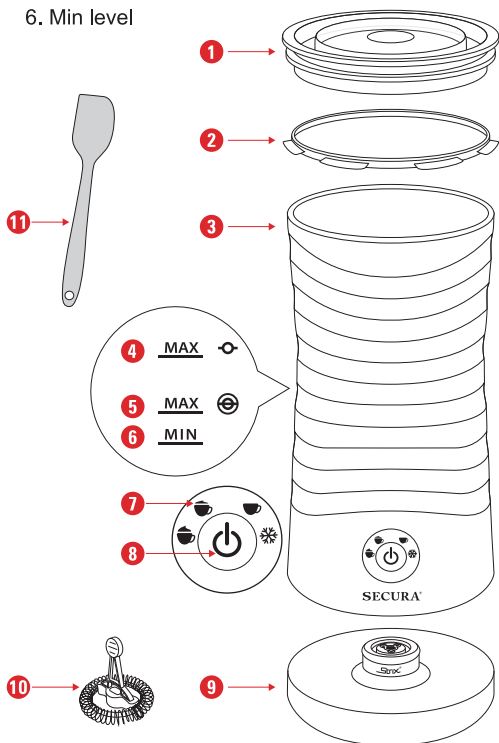


Always follow basic safety precautions when using any electrical products, especially when children are present.

**FOR PERSONAL USE ONLY
SAVE THESE INSTRUCTIONS**

PARTS LIST

- | | |
|--------------------|----------------------|
| 1. Transparent lid | 7. LED Indicators |
| 2. Silicone ring | 8. Power Button |
| 3. Milk container | 9. Power Base |
| 4. Upper Max level | 10. Whisk x2 |
| 5. Mid Max level | 11. Silicone Spatula |
| 6. Min level | |

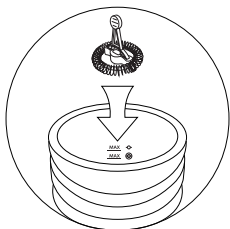


GETTING STARTED

Before use, follow these instructions carefully:

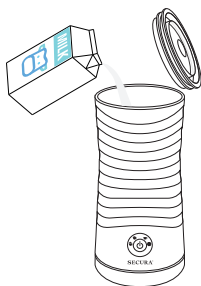
- Unpack all parts from the box. Please keep all of your packing materials until you have confirmed that the milk frother is in proper working order.
- Do not leave plastic wrapping within the reach of small children and babies. It is a suffocation hazard.
- Ensure that the cord and the power plug are undamaged. If there is any damage to the cord or the plug, do not use the device.
- Before use of the device, clean the milk container and the accessories. You can find cleaning information under the “Cleaning and Care” section of this manual.

INSTRUCTIONS



Step 1

Always remove the container from the power swivel base before you prepare it for use.



Step 2

Step 2:

Add milk into the milk container. Do not add milk above the Max level to avoid spillage.

Please note that there are two Max fill lines.

Use the Mid Max level for frothing-heating or frothing only MAX ☉ 115ml / 3.9 fl oz;

Upper Max level for heating only MAX ☉ 240ml / 8.1 fl oz.

WARNING:

DO NOT operate without a minimum level of liquid in the container.





DO NOT operate when there is no whisk set in place.

Automatic Milk Frother

Step 3:



Securely place the lid on top of the frother, making sure it is sealed. Plug in the frother. Press the power button one, two, three, or four times to perform the desired function. The indicator light will be on, to indicate the function.

Power Button	Indicator Lighter	Function	Max Capacity	Time Needed
Press once	 Red	Frothing and heating milk for dense foam	115 ml/ 3.9 oz	80-140 seconds
Press twice	 Red	Frothing and heating milk for fluffy foam	115 ml/ 3.9 oz	80-140 seconds
Press three times	 Red	Heating only (with tiny amount of foam)	240 ml/ 8.1 oz	180-340 seconds
Press four times	 Blue	Frothing only	115 ml/ 3.9 oz	60±5 seconds

Note: the time required varies greatly depending on the initial milk temperature and room temperature, among other factors. The time listed in the table is for reference only.

Step 4:

The frother heats the milk up to approximately 65°C (+/- 5°C) / 150°F (+/- 10°F).. The frother will switch to standby mode automatically with three beeps after completion of frothing and/or heating. While the frother is operating, pressing the button will switch the frother to standby mode.

Step 5:

Unplug the frother from the outlet after use.

Tips

The following tips are provided to help you get the best results from your new Secura milk frother:

- After use the milk frother will need approximately 2-3 minutes before it can be used again. Allow the thermostat to reset before frothing or heating more milk. If you wish to use the frother immediately, wash the inside of container with water.
- It is recommended to use whole milk (Fat content >3%) for better result.
- Do not use anything other than milk in the frother. Other items, like flavoring, coffee, or chocolate chips could cause damage.
- Milk foam can be easily collected with the included silicone spatula.



OTHER USEFUL INFORMATION

Cleaning and Care

Always remove the container from the power swivel base before you begin to clean it.

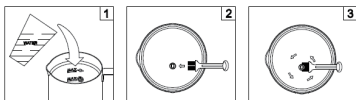
Do not immerse the container or the power base in water or any other liquid.

- **The container** - Always clean after each use. To do this, rinse the interior with warm, soapy water. Use a soft cloth to wash. Dry with a clean cloth.
- **The lid** - Remove the silicone ring and then wash each piece, rinsing thoroughly. Assemble the lid for easier storage.
- **The exterior of the frother** - This should only be wiped with a dry, soft cloth.

Note:

Never make use of sharp edges, scrubbing brushes or any abrasive materials on the milk frother. Do not use abrasive cleaners on the exterior or the interior of the frother. This could scratch the stainless steel exterior and damage the non-stick surface of the interior.

- **The whisks** - Remove the whisks and wash in warm, soapy water. Dry thoroughly before storage. Do not place the whisks or any part of the frother in the dishwasher. Always store the whisks in a safe place out of the reach of children. Remove milk residue inside the container and around the axle using the soft cleaning brush that comes with your milk frother. If not cleaned properly, milk residue may cause the frother to malfunction or shorten its life.



1. Pour just enough water into the milk frother (just immerse the axle sleeve)
2. Insert the brush into the bottom of axle sleeve.
3. Turn the brush 360 degrees around the axle to remove all residue.

TECHNICAL INFORMATION

Product	Automatic Milk Frother
Model	MMF-809-BL & MMF-809-WH
Rated Voltage	120V~60Hz
Rated Power	400W
Capacity	240 ml / 8.1 fl. oz. Max
Cord Length	27.6 in/ 700 mm
Product Dimensions	3.9x3.9x8.4 in / 100x100x213 mm
Packaging Dimensions	5.5x4.3x7.9 in / 140x110x200 mm
Net Weight	1.6 lb / 740 g
Gross Weight	2.0 lb / 913 g

DISPOSAL



When this appliance has reached the end of its life, please dispose of the unit properly. This and other electrical appliances contain valuable materials that can be recycled. Electronic waste may be harmful to our environment if not disposed of properly. We ask that you follow your governing agency's rules and regulations when disposing of electronic appliances. Please find an authorized recycling facility near you.

CONTACT

If you have any questions or concerns not addressed in this user manual, please call our customer service department at 888-792-2360 or email: CustomerCare@thesecura.com.

Please read operating instructions before using this product.

Please keep the original box and packaging materials in the event that service is required.

SECURA®

Manufacturer's Limited Warranty

The Manufacturer of this product warrants to the original purchaser of this product that this product will be free from defects in material and workmanship under normal use and service for 2 years from date of purchase. Manufacturer will, at its option, repair or replace with a new or refurbished product. Providing a replacement product does not renew or extend the warranty period from the original date of purchase. The Manufacturer reserves the right, before having any obligation under this limited warranty, to inspect the product, and all costs of shipping the product for inspection and warranty service shall be borne solely by the purchaser.

For the fastest processing of a warranty claim, the Purchaser should e-mail CustomerCare@thesecura.com and include the product name and model #, proof of original purchase, complete contact information, and detailed information about the issue, including pictures when applicable.

The manufacturer's limited warranty is valid only in accordance with the following conditions:

1. The product is purchased directly from manufacturer or an authorized reseller or distributor.
2. Only the original purchaser is covered by this warranty. This warranty is not transferable.
3. Product is for personal use only. This warranty is void if the product is used in a commercial or institutional establishment.
4. This warranty does not cover normal wear and tear or damage caused by misuse, abuse, negligence, accident, acts of nature, or unauthorized modification or repair.
5. Purchaser must present acceptable proof of purchase for the product.
6. This warranty gives you specific legal rights, and you may also have other rights which vary from state to state.

Secura, Inc.
CustomerCare@thesecura.com
Lake Forest, California

SECURA®

Secura Bestsellers

Secura Electric
Wine Opener



Secura 4-in-1 Electric
Milk Frother



Secura Electric Coffee
and Spice Grinder



Secura Automatic
Soap Dispenser



Secura Detachable Milk
Frother Upgraded



Secura French Press
Coffee Maker



Secura Mechanical
Visual Timer



Duxtop Portable 1800W
Induction Cooktop



Duxtop Professional
Stainless Steel Cookware



Secura Electronic
Visual Timer



Duxtop 1800W LCD
Induction Cooktop



Secura 1800W Electric
Deep Fryer



Secura, Inc.

888-792-2360 (North America)

CustomerCare@thesecura.com

Lake Forest, California

Designed in California

www.thesecura.com

For the fastest processing of a warranty claim, the owner should e-mail CustomerCare@thesecura.com and include the product name and model #, proof of original purchase, complete contact information, and detailed information about the issue, including pictures when applicable.